

STUDENT-PARENT
HANDBOOK

2023-2024

We will provide excellent academics and co-curricular activities that develop life-long learning skills for all students preparing them for our community and world-wide experiences.



Tomah Area School District
Tomah High School



tomah.education

TABLE OF CONTENTS

General Information.....	3	Pupil Services.....	30
Statement of Philosophy		Education of Homeless Children & Youth	
District Staff Directory		School Nurse	
Parent-Teacher Conferences		OP/TP & Other Special Needs	
District Calendars		School Social Worker	
School Accountability Report		School Psychologists	
THS Daily Schedules		Counseling Services	
District Board of Education		Student Promotion/Retention	
District Strategic Plan			
Public Notification of Nondiscrimination Policy		Academics.....	32
Military Families		Tips for Success	
Native American Families		Grading Scale	
Religious and Patriotic Ceremonies		Academic Letter/Achievement	
Voicing Questions and Concerns		Programs of Studies	
Work Permits for THS Students		Report Cards	
District Attendance Policies		Student Records	
		Incompletes	
Building Safety and Security.....	12	Rural Virtual Academy	
Visitors		THS Graduation Requirements	
Loitering		College Bound Students	
Fire & Tornado Drills		Schedule Change Policy	
Safety Drills		Mid Quarter Progress Reports	
Use of the Building		Parent/Teacher Conferences	
Use of Video Cameras & Photographs		Failure to Complete the Semester	
Weapons		Transcripts and Student Records	
Arrival & Dismissal Procedures		Grade Improvement Plan	
Harassment/Hazing		Academic Integrity	
Video Surveillance & Electronic Monitoring		WI Academic Excellence Scholarship	
School Emergencies			
Parental Custody		Academic Planning.....	38
Search & Seizure Procedures		Counseling Services	
Parking Permit & Parking Lot Rules		Course Offerings	
Loss of Personal Property on School Grounds		Financial Aid & Scholarships	
Visitors at THS		Start College Now Program	
Guests at THS Dances		Part time Public School Enrollment	
		Early College Credit Program (ECCP)	
Health & Medical.....	20	REACH/XELLO	
Guidelines for Staying Home		College Campus Visit Policy	
Medication Procedures		Laude Point System	
Head lice Prevention & Treatment		Honors Requirements for Seniors	
Concussions		Advanced Placement Courses	
Accidents		National Honor Society	
Suicide Prevention & Resources			
Elevator Use		Communications.....	43
Non-Emergency Screenings		District Website	
Cold Weather Policy		Infinite Campus Student Information System	
Asbestos Notification		School Closings/Late Starts/Early Dismissals	
Indoor Environmental Notice		Directory Data	
		District Newsletters	
Student Conduct.....	25		
School Expectations		Technology.....	44
Student Conduct & Discipline		Library Media Centers.....	47
Consequences for Behavior		Transportation.....	48
Dress Code		Food Services.....	50
Respect & Student Behavior		Activities & Clubs.....	53
Rtl		Annual Notices.....	54
Youth Gangs		Building Maps	55
Bullying/Harassment			
Lockers & Locker Searches			
Unacceptable Behaviors			
Hall Passes			
Detention Procedures			
Administrative Action			
Open Campus			
Textbook Fines			
Care of Materials			
Pets			

WELCOME LETTER FROM ADMINISTRATION

Dear Parents/Guardians:

The administration, faculty and staff of Tomah High School welcome you and your child to our great school! It is our sincere hope that your child will find this year challenging, rewarding and exciting.

Our major goal is for each student to reach his/her greatest potential. We urge you to be our partner in this effort. It is the combined responsibility of homes, school, and community to help students become responsible adults in society.

Our mission is to ensure excellence and opportunity for our students. It is our intent to foster for every student a positive attitude toward self and learning, an ability to think creatively and critically, communicate effectively, welcome diversity in people and contribute positively to our community.

This handbook contains very important information. The policies, procedures and expectations described are reasonable and necessary for maintaining a quality learning environment. Please read this handbook with your child. Being familiar with the contents is everyone's responsibility.

Robert Joyce, Principal
Jamie Nusbaum, Associate Principal
Jeff Adams, Associate Principal

STATEMENT OF PHILOSOPHY

The Board of Education believes that the school, as an educational institution of our social system, has been organized to promote the aims and objectives of our democratic society. The Board believes that each person should be accepted into the educational program as is, and that she/he should be provided with a stimulating environment and opportunities for learning experiences designed to promote behavioral development that will effect continuing satisfactory adjustments to life.

We believe each child is unique, and that the school must offer varied experiences and a wide range of acceptable standards to take these differences into account.

We believe the school must provide experiences with regard for their effect upon all aspects of the learner's development—intellectual, emotional, physical and social.

We believe that since our society is a democracy, the school must provide the students with experiences which will: (1) help them achieve academic competence; (2) help them to become sensitive to problems of common welfare in the family, the school and the community, the nation and the world; (3) teach them to work with others in the solution of these problems; (4) develop their feelings of individual responsibility for the common welfare; and (5) help them to act in harmony with what he/she says or believes.

We must believe that each child has worth and dignity, and that the school must continue to develop in the students, the understanding that with the privilege of public education, goes the acceptance of responsibility for participating in the improvement of society.

DISTRICT STAFF DIRECTORY

Enrollment

608-374-7009

Dr. Mike Hanson, District Administrator

608-374-7004

Angela Plueger, Director of Curriculum

608-374-7019

Michelle Clark, Business Manager

608-374-7005

Dr. Paul Skofronick, Pupil Services

608-374-7011

Tom Dummermuth, Director of Transportation

608-374-7377

Jesse Bender, Director of Food Services

608-374-7356

Brad Plueger, Director of Activities

608-374-7976

Fitness Center, Tomah High School

608-374-5612

[View THS Staff Directory](#)

PARENT-TEACHER CONFERENCES

THS 23-24 Parent-Teacher Conferences:

- August 16th, 2023 12:00-6:00 pm (THS Fall Festival)
- October 17, 2023 4:15-8:15 pm (Open Conferences)
- October 19, 2023 4:15-8:00 pm (Open Conferences)
- March 5, 2024 4:15-8:15 pm (Open Conferences)
- March 7, 2024 4:15-8:00 pm (Open Conferences)

Individual conferences may be scheduled at other times during the school year when needed. Parents are also encouraged to contact teachers at any time throughout the school year with questions or concerns. Please stay up-to-date with student progress using Infinite Campus.

DISTRICT CALENDARS

The following (and attached) calendars are a schedule of events that typically occur in an academic year. These events include spring break, planned no-school days, holiday breaks, parent teacher conferences, etc.

Calendars for the Current School Year Include:

- » District Calendar
- » District 4K Calendar
- » Lemonweir Elementary 45-15
- » Lemonweir 4K 45-15

[View Calendars Online Here](#)

ACCOUNTABILITY REPORT

As part of the state accountability system, the Department of Public Instruction (DPI) has produced report cards for every school district in Wisconsin. These report cards provide data on multiple indicators for four (4) priority areas: student achievement, student growth, closing gaps, and on track and post-secondary readiness. View Tomah's [previous year accountability reports](#). Download the full [2021-2022 report](#) with data for each school.

THS DAILY SCHEDULES

THS maintains daily bell schedules that all students' classes coincide with; there is a set schedule for Regular School Days, 2-Hour Delay Schedules, and 2-Hour Early Dismissal Schedules. [View THS Bell Schedule](#)

BOARD OF EDUCATION

Michael Gnewikow, President
MichaelGnewikow@tomah.education

Spencer Stephens, Vice President
SpencerStephens@tomah.education

Ricky Murray, Clerk
RickyMurray@tomah.education

Susan Bloom, Treasurer
SusanBloom@tomah.education

Aaron Lueck, Member
AaronLueck@tomah.education

Catey Rice, Member
CathrynRice@tomah.education

James Newlun, Member
JamesNewlun@tomah.education

WWW.TOMAH.EDUCATION/BOE

Tomah High School Student Representative

The Tomah Area School District recognizes the importance of student leadership in guiding the direction of the District. The position of an appointed student representative is established by the Board for the purpose of encouraging open communication between the student body and the Board, to support active student participation in decision making, and to foster student leadership.

The THS Student Council Advisor shall appoint a student representative to the Board under rules established by the Student Council, to represent the student body and the Tomah High School Student Council.

The Board of Education will designate one board member to mentor and orient the student representative in his/her new position.

Board meetings are open to the public.

You can view meeting agendas and minutes on the district webpage as well.



Watch the district's Facebook page for reminders and releases from BOE meetings.

Goals:

- » Act as liaison between Tomah High School students and the Board, providing input on educational issues from a student perspective.
- » Report academic and extra-curricular highlights.
- » Develop leadership skills and an understanding of governmental processes.

Expectations:

- » Attend all regular monthly School Board meetings and Board Academy meetings, except closed sessions.
- » Communicate with the high school principal or Student Council advisor prior to and subsequent to each board meeting.
- » Communicate with the superintendent to request Board consideration of specific student issues.
- » Report back to Tomah High School Student Council following each board meeting.

Limits:

- » Non-voting position.
- » Student representative to the board may participate in board goal setting, but may not prioritize goals or vote on goals.
- » Student representative will not attend closed sessions.
- » Student representative will receive a meeting agenda on the Thursday prior to each board meeting.
- » One student representative will be appointed by the THS Student Council Advisor. To qualify as a potential appointee, the student representative must be:
 - a. of junior or senior status to be eligible to serve,
 - b. eligible to serve a maximum of two years,
 - c. in good standing academically and on track for graduation,
 - d. willing to abide by the school district's Code of Conduct.



OUR VISION

We will provide excellent academics and co-curricular activities that develop life-long learning skills for all students preparing them for our community and world-wide experiences.



INNOVATION We are committed to continuous improvement by seeking innovative methods, strategies, and programs to meet the needs of our 21st century learners and prepare them for their future.

INTEGRITY We are committed to fostering open, honest, and transparent communication between all school staff and with students, parents, and community members. We will promote an environment of compassion and understanding in order to demonstrate equity and fairness for each individual and to build trust within and outside of our schools.

RESPECT We are committed to building respect by assuming positive intent in the ideas and suggestions presented by others and by recognizing the inherent value of each person. All members of our school community will be held to high expectations and we will provide supportive practices and policies which demonstrate our belief that ALL students can learn.

PASSION We are committed to the value of public education and the important learning which occurs in our schools each and every day. We will demonstrate enthusiasm in pursuing the work we do and perseverance in turning challenges into opportunities. We will strive to inspire each other and our students to pursue excellence in all endeavors.

LEADERSHIP We are committed to building leadership at all levels through collaborative teamwork, partnerships with all stakeholders in the community, and accountability for individuals and collective actions and decisions.

5 Pillars of Excellence



We will prepare our students to succeed each year and in their future post-secondary education and the career of their choice.

We will attract and retain and continuously develop high effective employees for our team.

We will ensure an educational experience and environment for our students, parents, and community members that promotes understanding and kindness by creating connections to one another.

We will work to transform educational opportunities to ensure the Tomah School District remains a school district of choice for students and their families.

We will plan and use resources to best supportive the district mission, vision, and goals.

For more information on TASD's Strategic Plan, Visit our website.



OUR MISSION

To provide high quality student learning: Every child. Every day.



PUBLIC NOTIFICATION OF NONDISCRIMINATION POLICY

It is the policy of the Tomah Area School District that no person may be denied admission to any public school in this district or be denied participation in, be denied the benefits of, or be discriminated against in any curricular, extracurricular, pupil service, recreational, or other program or activity because of the person's race, color, religion, national origin, ancestry, creed, pregnancy, marital status, parental status, sexual orientation, sex (including transgender status, change of sex or gender identity) or physical, mental, emotional, or learning disability ("Protected Classes") as required by s. 118.13, Wis. Stats. This policy also prohibits discrimination as defined by Title IX of the Education Amendments of 1972 (sex), Title VI of the Civil Rights Act of 1964 (race and national origin), and Section 504 of the Rehabilitation Act of 1973, and the ADA of 1990.

The district encourages informal resolution of complaints under this policy. A formal complaint resolution procedure is available, however, to address allegations of violations of the policy in the Tomah Area School District.

All career and technical education (CTE) courses and programs are offered without discrimination. For a summary of courses, please see: www.tomah.education.

Any questions concerning this policy should be directed to:

Dr. Charles M. Hanson II, District Administrator
Tomah Area School District
129 West Clifton Street
Tomah, WI 54660
(608) 374-7004

Questions concerning s. 118.13, Wis. Stats., or Title IX of the Education Amendments of 1972, which prohibits discrimination on the basis of sex, should be directed to:

Dr. Paul Skofronick, Title IX Coordinator
Tomah Area School District
1310 Townline Road
Tomah, WI 54660
(608) 374-7011

Inquiries related to Section 504 of the Rehabilitation Act of 1973 or the ADA of 1990, which prohibits discrimination on the basis of handicap, should be directed to:

Dr. Paul Skofronick, Section 504 Coordinator
Tomah Area School District
1310 Townline Road
Tomah, WI 54660
(608) 374-7011

MILITARY FAMILIES

We are one of the two closest school districts to Fort McCoy and the closest to Volk Field. We are specially familiar with serving military families and would love to be part of your child's educational journey. We work closely with the School Liaison Officer located at Fort McCoy to smoothly integrate our incoming Military-connected families.

MS. REBECCA L. WALLEY

School Liaison Officer
Fort McCoy, Child Youth Services (CYS) Office
rebecca.l.walley.naf@mail.mil
<https://www.tomah.education/tasd-military-families-students>

NATIVE AMERICAN FAMILIES

We also have a familiarity with specific rights and needs of Native American students and families as our district is richly immersed in the Ho Chunk culture and history. We have a Title VI Director who acts as a liaison and advocate for our Native American students.

MS. BONNIE BIRD

Native American Education
Tomah Area School District
bonniebird@tomah.education

RELIGIOUS & PATRIOTIC CEREMONIES (8800)

Decisions of the United States Supreme Court have made it clear that it is not the province of a public school to advance or inhibit religious beliefs or practices. Under the First and Fourteenth Amendments to the Constitution, this remains the inviolate province of the individual and the church of his/her choice. The rights of any minority, no matter how small, must be protected. No matter how well intended, either official or unofficial sponsorship of religiously-oriented activities by the school are offensive to some and tend to supplant activities which should be the exclusive province of individual religious groups, churches, private organizations, or the family. [View Policy 8800](#)

RELIGIOUS EXPRESSIONS IN THE DISTRICT (8800B)

School Board policy 8800B covers: student prayer and religious instruction, graduation prayer and baccalaureates, official neutrality regarding religious activity, teaching about religion, student assignments, religious literature, religious excusals, released time, teaching values, and student garb. [View Policy 8800B](#)

VOICING QUESTIONS & CONCERNS

Constructive criticism of the school is welcome when it is motivated by a sincere desire to improve the quality of the educational program and to equip the school to perform its task more effectively.

The following steps should be followed if you have a concern about district personnel or procedures:

1. Contact the staff member directly responsible.
2. Contact the building principal.

It may be submitted in writing to the District

Administrator if the complaint is not satisfactorily resolved in Steps 1 or 2 above.

[View Policy 9130](#)

REFERENCING DISTRICT POLICIES

School Board Policies are hyperlinked throughout this Handbook for quick reference. Complete and full policies are posted to our website at:

<https://go.boarddocs.com/wi/tasd/Board.nsf/Public?open&id=policies#>

WORK PERMITS

16 and 17 year-old minors do NOT need to obtain a work permit prior to beginning work.

- Work permits will not be issued for minors ages 16 or 17.
- Minors younger than 16 must obtain a work permit prior to beginning work, unless an exception applies.

If you are younger than 16, Wisconsin law states you must have a work permit for each new job. Work permits can be secured online through the Department of Workforce Development (DWD)

<https://www.dwd.wisconsin.gov/er/laborstandards/workpermit/>

DISTRICT ATTENDANCE POLICIES

The Board of Education believes it is the shared responsibility of the school and the home to assist the students in developing desirable habits of punctuality and attendance. The Board expects that every step will be taken by school personnel to implement this philosophy. **All children are expected to be in attendance each day unless they are ill or a family emergency arises.**

STUDENT ILLNESS

For short-notice absences such as illness or family emergencies (the morning of a school day), please call, email or fax the attendance office:

Phone 608-374-7357
Email shannonsalzwedel@tomah.education
Fax 608-374-7290

The High School office must be notified each day a student is absent. Parents may call or email their child's absence to the attendance office twenty-four (24) hours a day, seven (7) days a week. If a parental notification is not received, an automated phone message will go out to parents at 4:00 p.m. the day of the absence. The absence will be marked unexcused unless a written note is either submitted before the absence or within two days (48 hours) after returning from the absence.

For absences due to medical or legal appointments, parents/guardians may call the attendance office or students may bring a note written by a parent or guardian to the attendance office before school and receive a dismissal pass. The note must contain:

1. specific reason,
2. destination,
3. length of absence,
4. and date of absence.

It is highly recommended to obtain a note while at the appointment in order for the absence to be excused medically. A medically excused absence can be for any medical reason, such as dental/orthodontic appointments, physical appointments and behavioral health appointments. The medical note must be obtained directly from the health care facility and signed by approved personnel.

When at school, students may not leave the grounds (except for lunch and school activities) without a dismissal slip. Students who become ill at school must report to the office. The school must contact a parent/guardian before the student may leave school. If the

illness happens over lunch and the student does not return, a parent or guardian must contact the school the same day in order for the absence to be excused.

PRE-EXCUSED ABSENCES

For an absence to be considered "pre-excused", students must complete a pre-excused absence form. The form can be picked up in the main office and must be:

1. signed by the student's teachers, who will indicate what work will be missed that day.
2. signed by the student and a parent/guardian,
3. turned in to the main office one day prior to the absence.

The Associate Principal may assign detentions to students who receive an unexcused absence.

AGE OF MAJORITY

All students at Tomah High School are subject to school rules. Students who have reached their 18th birthday are permitted to originate their own request for excuse for absence only if they (1) are not living with their parent or guardian or (2) the parent or guardian returns a signed permission form, which is available in the high school office, to the school stating the student is responsible for him or herself. The school will continue parent communication unless specifically requested in writing to stop. The student is still bound by the same set of acceptable reasons as listed in the school attendance policy.



TRUANCY AND HABITUAL TRUANCY

Truancy is defined as any absence of part or all of one or more school days during which the school has not been notified of the legal cause of such absence by the parent/guardian of the absent student, and also means intermittent attendance carried on for the purpose of defeating the intent of the compulsory attendance law (Wisconsin State Statutes 118.15 and 118.16(1)(c)). Parents/guardians will be notified when a student has an unexcused absence. Notices shall be made by personal contact, mail or telephone of which a written record is kept. Some common examples of absences that will be considered truanies: leaving the building without checking out, skipping classes, over sleeping, etc. If a student is in the school building, but not where they are supposed to be, the student is considered unexcused and will receive consequences.

Habitual Truancy may be filed when a student reaches five (5) unexcused absences in a semester.

[View Policy 5200.](#)

TOMAH HIGH SCHOOL TARDY POLICY

Members of the THS community will be in their classrooms on time. In accordance with the truancy laws, missing part of a day will be defined as missing any part of a class. Therefore, a student who comes to class late has missed part of the day. Since the purpose of this policy is to encourage punctuality, and not punish the students who may occasionally encounter a jammed locker, a student will not receive an unexcused absence for truancy purposes until they reach three unexcused tardies. Accordingly, a student may be referred to truancy court when they accrue some combination of unexcused tardies and unexcused absences that adds up to five. A student could therefore be referred to truancy court for five unexcused absences or fifteen unexcused tardies or any combination of the two such as three unexcused absences and six unexcused tardies. Students who are 18 years old will be subject to extended detention for violating the Tomah H.S. attendance and/or tardy policy.

WITHDRAWAL FROM SCHOOL

State statutes now require full time attendance until the end of the semester in which the student becomes 18 years of age. In the event a student is to withdraw from Tomah High School during the school year, it is important that the following procedure is followed:

1. A withdrawal card needs to be completed in the high school office. The withdrawal card is to be signed by the parent if the student is under age 18. This acknowledges parental permission for school or program transfer.
2. It is to be noted on the card the reason for withdrawal.



BUILDING SAFETY & SECURITY

VISITORS

Any visitors allowed in the building will be at the discretion of the building principal and school staff. During the school day, while school is in session, all doors will be locked. Students are not permitted to bring other children to school as guests. For the safety and security of students, staff and guests, visitors are expected to follow the procedure below:

- » Visitors during the school day must enter through the main entrance to sign in and get a visitor's pass.
- » Once identified, visitors may sign in and enter the building to go to a specific location for a specific purpose.
- » Once your visit is complete, all visitors must exit the building through the main entrance and sign out verifying they have left the building.

LOITERING

No person 14 years or older shall loiter in or about any public or private school or public building. Loiter means to delay, linger, idle or present oneself within a school or upon school grounds or public building without a lawful purpose for being present. Loitering shall further include being present without permission of school or public authorities or being present for a purpose not directly related to the normal conduct to education or business within or around a school or public building.

FIRE & TORNADO DRILLS

Fire and tornado drills are held at regular intervals throughout the school year. Remember these basic rules:

1. Check the instructions posted in each classroom indicating how to leave the building or where to go in case of a fire/tornado.
2. Walk single file. No talking. Move quickly and quietly to the designated area.

SAFETY DRILLS

While schools are a place of learning and personal growth, they are not immune from societal problems. As a result, educators and law enforcement must cope with numerous challenges to school safety. In order to maintain a safe environment for students and teachers, we implement practice drills to assist us in responding to a crisis or emergency situation. Just as we conduct regular practice fire and tornado drills to ensure that we can safely evacuate the building or get students to a safe area quickly, practice safety drills will be conducted. These drills will help students and staff become better equipped to deal with a crisis situation in as calm and controlled a manner as possible.

USE OF THE BUILDING

Non-School Organizations

Outside groups who wish to use the auditorium, gymnasium, or other parts of the building must make application for the room(s) with the District Office at 374-7005. No group or individual may use any part of the building outside regular school hours without a member of the faculty being in attendance with the person or group the entire time the person or group uses the building.

High School Groups or Individuals Using Building
High school groups who wish to use any part of the building outside of regular school hours must reserve the room(s) with the District Office at 374-7005.

[View Policy 7510](#)

USE OF VIDEO CAMERAS/PHOTOGRAPHS

The school may utilize video cameras and hand-held cameras throughout the building to assist with monitoring safety, as well as for instructional purposes. Photographs may be taken for the school yearbook and newspaper, the Tomah Journal or other local papers, and/or displayed for students, staff and visitors. Students should not bring cameras to school for their own personal use unless approved in advance by administration.

[View Policy 7440.01](#)

WEAPONS (5772)

The Board prohibits students from possessing, storing, making, or using a weapon in any setting that is under the control and supervision of the District for the purpose of school activities approved and authorized by the District including, but not limited to, property leased, owned, or contracted for by the District, a school-sponsored event, or in a District vehicle, to the extent permitted by law.

[View Policy 5772](#)

ARRIVAL

- » Classes for students begin at 7:55 A.M.
- » Please note that the school does not provide supervision of students arriving prior to 7:30 A.M.
- » If you drop off your children in the morning, please remember not to block the lanes of traffic at the school.

DISMISSAL

- » Students will be dismissed from school at 3:21 P.M.
- » Students who ride a bus are expected to go directly to the loading area.
- » Students who walk or leave by private transportation are expected to leave school grounds promptly.
- » Students are not to remain in the school after dismissal.
- » Please note that the school does not provide supervision for students after dismissal.
- » Students may remain at school for special programs, extra work or discipline only if prior arrangements have been made with the child's teacher or other school personnel.



HARASSMENT/HAZING

Harassment/hazing are unwanted physical or verbal behaviors which are directed at a student or staff member and serve no legitimate purpose. Harassment/hazing are illegal and will not be tolerated at the high school.

Every child has the right to feel safe and secure in the school environment. There can be no tolerance for harassment, intimidation or bullying. Harassment in school can affect student achievement and participation in school activities and has a huge emotional cost. All school districts are obligated to adopt policies and procedures responding to complaints of pupil harassment. Districts are also encouraged to take pro-active steps to prevent pupil harassment.

Harassment, bullying behavior and cyber bullying are taken very seriously. Students engaging in this behavior may be given a warning that their behavior is unacceptable and then, if it continues, progressive disciplinary action will occur. All day suspension and a referral to the Tomah Police Department will occur if a student does not self-correct his/her inappropriate behavior.

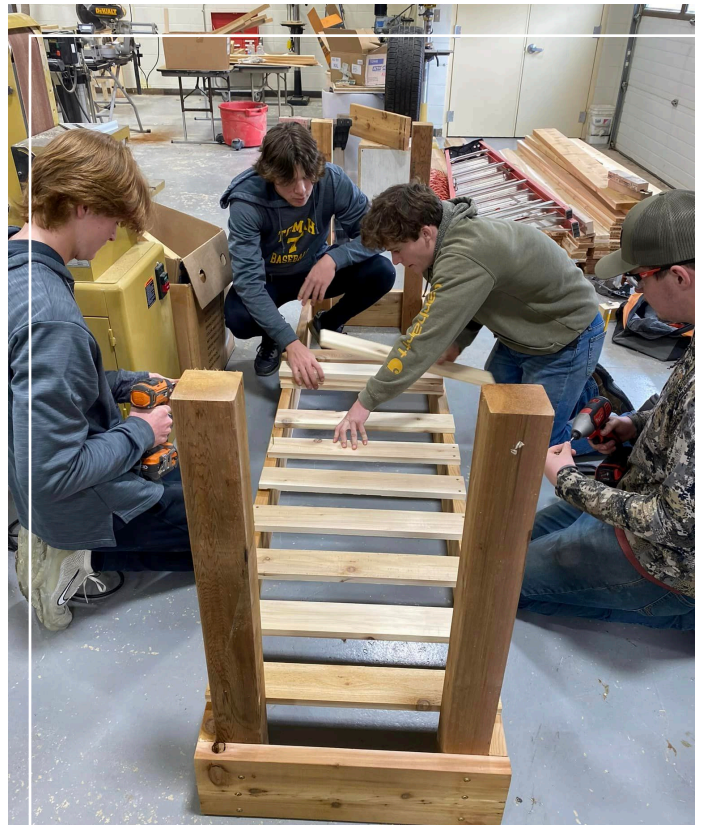
We know you share our concern that all students feel safe and secure in our schools. In order to reach this goal, elimination of harassment, intimidation and bullying is essential. Please talk with your child about harassment and bullying. Preventing this type of behavior is a job for all of us - parents, educators and students.

See Tomah School Board Policies [5517](#), [3362](#), [4362](#) for more information regarding harassment.

VIDEO SURVEILLANCE AND ELECTRONIC MONITORING

Please be advised there are video surveillance cameras on premises. Personal information and activities recorded are collected and used to maintain a safe and secure environment in schools and on school district property and may be disclosed for law enforcement purposes. For questions or concerns, please contact the building principal at 608-374-7358.

[View Policy 7440.01](#)



IN THE EVENT OF A SCHOOL EMERGENCY

Should an emergency situation arise in our community and/or one of our schools while school is in session, we want you to be aware the schools have made preparations to respond effectively and appropriately to such situations. The Tomah Area School District has a detailed, all-hazards emergency plan that has been formulated to provide direction to its staff and students during such an incident.

In the event of an emergency, we ask for your cooperation in the following procedures:

1. Please do not telephone the school. Telephone lines must be kept available for emergency communication.
2. Please do not come to the school unless requested to pick up your child.
3. In the event of an emergency that requires us to evacuate and relocate, students may be picked up at a designated reunification location by an identified, responsible adult who has been identified through the student's emergency contact information as recorded in our student information system "Infinite Campus".
4. Emergency contact information must be designated by parents/guardians at the beginning of every school year and kept updated as needed through "Infinite Campus Parental Access" or by contacting the District Office.

You can expect the District to respond in the following manner:

- » For weather-related incidents, turn your radio to emergency announcements for weather updates
- » Information regarding day-to-day school operations will be available on our district web site and other methods of mass communication including local media. Updates will be made as appropriate.

Please impress upon your children the need for them to follow the directions of any school personnel in times of an emergency.

When authorizing another person to pick up your child, please consider the following requirements:

- » He/she is at least 18 years of age
- » He/she is usually available during the day
- » He/she could walk/drive to your child's school, if necessary
- » He/she is known to your child
- » He/she is aware of and able to assume this responsibility
- » He/she is able to provide proper identification to school officials in order to confirm status as an emergency contact

PARENTAL CUSTODY

In cases of separation or divorce, the school must be informed of concerning custody and other circumstances that may require duplicate report cards and school mailings. If one parent is legally restrained from access to a child, the school requires legal confirmation of such actions to be on file. Please discuss these circumstances with your school principal.



SEARCH AND SEIZURE

The Board of Education has charged school authorities with the responsibility of safeguarding the safety and well-being of the students in their care. In the discharge of that responsibility, school authorities may search school property such as lockers used by students or the person or property, including vehicles, of a student, in accordance with the following policy.

Except as provided below, a request for the search of a student or a student's possessions will be directed to the principal. Whenever possible, a search will be conducted by the principal in the presence of the student and a staff member. A search prompted by the reasonable suspicion that health and safety are immediately threatened will be conducted with as much speed and dispatch as may be required to protect persons and property.

Search of a student's person or intimate personal belongings shall be conducted by a person of the student's gender or in the presence of another staff member of the same gender, and in a manner that is minimally intrusive to the student based on the reasonable suspicion justifying the search.

School Property

The Board acknowledges the need for in-school storage of student possessions and shall provide storage places, including desks and lockers, for that purpose. Desks and lockers are public property and school authorities may make reasonable regulations regarding their use. The District retains ownership and possessory control of student desks and lockers and the same may be searched at random by school personnel at any time. A showing of reasonable cause or suspicion is not a necessary precondition to a search under this paragraph. Students shall not have an expectation of privacy in lockers, desks, or other school property as to prevent examination by a school official. The Board directs the school principals to provide students with written notice of this policy at least annually and that routine inspections be done at least annually of all such storage places.

The Board directs that the searches may be conducted by the District Administrator, building principals, assistant principals, School Resource Officer, or law enforcement officer when requested.

Student Person and Possessions

The Board recognizes that the privacy of students or his/her belongings may not be violated by unreasonable search and seizure and directs that no student be searched without reasonable suspicion that the search will turn up evidence that the student has violated or is violating either a particular law or a particular rule of the school. Any search under this paragraph must be reasonable in scope and reasonable in the manner in which it is conducted. The extent of the search will be governed by the seriousness of the suspected infraction, the student's age and gender, the student's disciplinary history, and any other relevant circumstances or information. The Principal may arrange for a breath test for blood-alcohol to be conducted on a student whenever s/he has individualized reasonable suspicion to believe the student has consumed or is under the influence of an alcoholic beverage while on school premises or while participating in a school-sponsored activity. If the result indicates a violation of school rules as described in the student handbook, the disciplinary procedure described in the student handbook will be followed. If the student refuses to take the test, the Principal will inform the student that refusal to participate implies admission of guilt leading to disciplinary action consistent with the student handbook.

This authorization to search shall also apply to all situations in which the student is under the jurisdiction of the Board. Under no circumstances shall a school official ever conduct a strip search of a student.

Parking Permit Required

Permission for a student to bring a vehicle on school property shall be conditioned upon written consent of the search of the vehicle and all containers inside the vehicle by a school administrator with reasonable suspicion to believe the search will produce evidence of a violation of a particular law, a school rule, or a condition that endangers the safety or health of the student driver or others. If an administrator determines a search is necessary, he or she should request consent to search the vehicle and all containers inside the vehicle. If consent is not given, a school administrator may proceed with the search. An administrator may contact the police liaison officer or law enforcement agency for assistance in conducting a search.

Use of Dogs

The Board authorizes the use of specially-trained dogs to detect the presence of drugs and devices such as bombs on school property under the following conditions:

The presence of the dogs on school property is authorized in advance by the District Administrator, except in emergency situations, or is pursuant to a court order or warrant.

The dog must be handled by a law enforcement officer or certified organization specially trained to safely and competently work with the dog.

The dog is represented by the Sheriff or Chief of the law enforcement agency providing the service as capable of accurately detecting drugs and/or devices.

The principal shall be responsible for the prompt recording in writing of each student search, including the reasons for the search; information received that established the need for the search and the name of informant, if any; the persons present when the search was conducted; any substances or objects found and the disposition made of them; and any subsequent action taken. The principal shall be responsible for the custody, control, and disposition of any illegal or dangerous substance or object taken from a student.

The District Administrator may request the assistance of a law enforcement agency in implementing any aspect of this policy. Where law enforcement officers participate in a search on school property or at a school activity pursuant to a request from the District Administrator, the search shall be conducted by the law enforcement officers at the direction of a District official. Law enforcement searches conducted independent of any District official request or direction shall be conducted based on standard applicable to law enforcement.

Anything found in the course of a search pursuant to this policy which constitutes evidence of a violation of a particular law or school rule or which endangers the safety or health of any person shall be seized and properly cataloged for use as evidence if appropriate. Seized items shall be returned to the owner if the items may be lawfully possessed by the owner. Seized items that may not lawfully be possessed by the owner shall be turned over to law enforcement.

The District Administrator shall prepare administrative guidelines to implement this policy and shall provide students and staff with written notice of this policy and guidelines at least annually.

[View Policy 5771](#)

PARKING PERMIT AND PARKING LOT RULES

Permission for a student to bring a vehicle on school property shall be conditioned upon written consent of the search of the vehicle and all containers inside the vehicle by a school administrator with reasonable suspicion to believe the search will produce evidence of a violation of a particular law, a school rule, or a condition that endangers the safety or health of the student driver or others. If an administrator determines a search is necessary, he or she should request consent to search the vehicle and all containers inside the vehicle. If consent is not given, a school administrator may proceed with the search. An administrator may contact the police liaison officer or law enforcement agency for assistance in conducting a search.

1. Permit cost is \$20, THERE WILL BE NO REFUNDS. You must have a permit to park in the school lot.
2. The student must have a valid driver's license before being issued a permit.
3. The parking permit can be displayed either on the rear windshield or front windshield of the vehicle (make sure to locate in a way that does not impair vision). If the vehicle is a truck and has a topper, the sticker can be placed either on the front windshield or on the rear window of the topper. Convertibles should display the parking permit in the front lower section of the windshield (make sure to locate in a way that does not impair vision). Motorcycles do not have to display a parking sticker but must be registered in the high school office and pay the same \$20 fee.
4. In accordance with Board Policy 5771, Search and Seizure, vehicles parked in the school lot are subject to search and seizure at any time there is reasonable suspicion or cause. In addition, Board Policy 5515 states: Students who park their vehicles in any school parking lot or on school property are subject to restrictions on what is displayed on or in their vehicles. Distasteful and/or disruptive expression including, but not limited to, bumper stickers and window paintings determined to be inappropriate by the administration must be removed.
5. The parking lot is off limits during class time unless the student signs out and receives a pass from the high school office.
6. Permits are non-transferable. They are valid for the registered student only and cannot be shared with other students.
7. Students must park in the student parking; students in staff or visitor parking will be ticketed.
8. Parking may be limited to upper classmen if space dictates.
9. Any behavior while driving a vehicle on school property which is potentially hazardous to others or the property of others, may result in a suspension of parking privileges.
10. TASD is not responsible for damage done to vehicles on the school grounds.

LOSS OF PERSONAL PROPERTY

The Tomah School District will in no way be responsible for any item of property left in or at any Tomah School Building whether with or without the knowledge of School District employees or students. The School District does not carry a non-ownership policy on these items in any school. Any loss suffered directly or indirectly will be at the owner's risk. Students must use their designated locker and the locker must always be locked. Lost items that are found are returned to the main office. Any unclaimed items are donated or thrown away at the end of each quarter.



VISITORS

Parents are always welcome to visit the school. As we implement our security measures, we understand the increased need to be aware of all visitors to our building. The following procedures are in place to ensure the safety of our building:

- » All visitors during the school day (7:55 am to 3:21 pm) must enter through the Lincoln Avenue doors to receive a visitor's pass.
- » Once identified, visitors may sign in and enter the building to go to a specific location for a specific purpose (i.e. prescheduled meeting with a teacher, athletic office, main office, counseling office, etc.)
- » Once done, all visitors must exit the building out the same Lincoln Avenue doors to sign out, verifying that they have left the building.
- » Visitors are not permitted in the cafeteria/commons during the lunch period. If you wish to take your student out for lunch, they can be picked up and taken off campus for lunch and returned before the start of the next class period.
- » Visitors are not allowed to stay and spend any part of the school day at school with their student (i.e. "hang out"). The visit must be for a specific reason, leaving when that specific reason is completed.
- » Student visitors are not allowed while school is in session.

GUESTS AT THS DANCES

All guests will need to fill out a Tomah High School dance guest contract. The dance guest contract is for all Tomah High School students who wish to bring a guest who is not a student at Tomah High School. All guests will need to be approved by the high school administration. All guests must be of at least freshmen standing. Guests 20 years of age or older will not be permitted to attend the dance. In addition, guests with any of the following pending or convicted offenses because of background checks will not be permitted to attend the dance (includes, but is not limited to):

- » Alcohol related offenses
- » Drug related offenses
- » Disorderly conduct offenses
- » Any felony or misdemeanors



HEALTH & MEDICAL

GUIDELINES FOR STAYING HOME

Parents and staff should follow the following guidelines when determining whether a child should stay home from school:

Your Child Should Stay Home If:

- » Has a fever greater than 100 degrees
- » Has been vomiting within the last 24 hours
- » Has had diarrhea within the last 24 hours
- » Has a rash with fever that is open and draining
- » Has strep throat or impetigo and has not been on medication for 24 hours

The following communicable diseases need to be reported to the school nurse at 608-374-7015.

- » Chicken pox
- » Fifth disease
- » Head lice
- » Impetigo
- » Mono
- » Pneumonia
- » Lyme disease
- » Ring worm
- » Scabies
- » Shingles
- » Strep throat

Your child may return to school when:

- » Is fever free for 24 hours without medication
- » Has been on medication for Strep Throat for at least 24 hours
- » Has not vomited for at least 24 hours
- » Has been diarrhea free for at least 24 hours

If your child is going to be absent, please call the school office prior to 8:30 a.m.

MEDICATION

School personnel cannot administer any medication without written consent from a parent. A physician's signature and parent signature will be required for all prescription medication to be administered during the school day. Over-the-counter medication requires a parent/guardian signature only.

The completion of the "[School Medication/Procedure Form](#)" and obtaining the physician's signature will be the parent's responsibility. Medication forms may be faxed to 374-7303. Forms will be sent to the appropriate school. Students who need to take medication must have the "School Medication/Procedure Form" completed, signed and on file at the school. The medication must be in the original container. The medication forms are available in each school and at area clinics. Medications (prescription and over-the-counter) cannot be sent home with students. Parents must pick them up.

Medication should only be given in school if absolutely necessary. Medication scheduled for three times a day should be given right before school in the morning, immediately after school at home and at bedtime. An exception would be medications prescribed for a specific time (e.g. Ritalin). We would like to discourage the excessive use of over-the-counter medications. Please have guidelines as to when your child should request an over-the-counter medication.

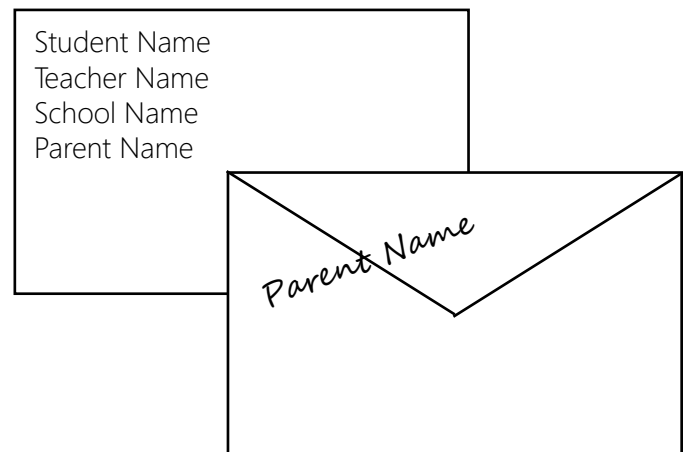
Some students think they are "supposed to take it" because they know their parents have filled out the form and have the over-the-counter medication available at school.

BRINGING MEDICATION TO SCHOOL

When possible, please bring your child's medication to school and drop it off in the main office.

If you are unable to bring in the medication, it can be sent to school with your student, but it MUST be in a sealed envelope. On the front of the envelope please include: Student's Name, Teacher, School, and parent(s)/guardian(s) printed name. On the back of the envelope, seal the flap and put your signature across the flap. This procedure is in place for the safety of your children.

[View Policy 5330](#)



HEAD LICE PREVENTION AND TREATMENT

Between 10 and 12 million American school children are infested with head lice every year. It occurs in more children than all other communicable childhood diseases combined, except the common cold. Head lice can happen to anyone, and is not associated with a lack of cleanliness. The best way to confirm a lice infestation is to look for eggs, which are called "nits." Nits are small, silvery and oval shaped. They are firmly attached to the hair shaft at an angle. They will not shake loose like dandruff or sand. The actual louse is smaller than a sesame seed. They are wingless, flat and of varying colors.

Head lice are transmitted directly from one person to another, or by contact with articles that have been used by an infested person such as with combs, brushes, hats, scarves and bedding. Lice can live away from a human host for 2-3 days and nits can survive up to 12 days.

Generally, lice treated once can be eradicated. It is a matter of washing the hair with lice killing shampoo, and then carefully removing all nits. Removal of nits is sometimes made easier with special metal nit combs. To completely get rid of lice, it is important to also clean other areas where the lice might be, including: recently worn clothing, bedding, pillows, stuffed animals, couches, combs, brushes, other hair accessories and cars.

It is the responsibility of the parents to check children at regular intervals for lice. Watch for symptoms of infestation, especially itching. Look at the scalp in good light. Most nits will be in the hair around the ears or at the crown of the head. The lice move very quickly away from light. Parents should recheck their children for any symptoms of head lice 14 days after treatment.

If the shampoo fails more than once, parents should contact their physician. Recent studies have indicated that head lice are becoming resistive to current treatments. These shampoos are pesticides and can be very harmful if misused or overused.

If you have any questions, feel free to contact the school district nurse at 374-7015.

ABSENCES DUE TO HEAD LICE

If a child is found to have lice, the child's parent will be contacted to have the child treated. The District practices a policy that the management of head lice in the school setting should not disrupt the educational process. There is to be no forced absences from school for nits and/or live lice.

Whenever a child is found to have head lice:

»Students diagnosed will not need to go home early; they can go home at the end of the day, be treated and return to school following appropriate treatment.

»They should be discouraged from close direct contact with others; however they should not be removed from the classroom.

»Parent or guardian should be notified that day by telephone or by having a note sent home with the child at the end of the school day stating that prompt, proper treatment of this condition is in the best interest of the child and his or her classmates.

»When the child returns to school and if live lice are noticed again, the parents will again be contacted and notified, but the child will be allowed to remain in school.

[View Policy ag8451](#)

CONCUSSIONS

Due to increased awareness and understanding of the impact of a concussion which is a type of traumatic brain injury, parents who inform coaches and teachers that their child is being treated by a health care professional for a concussion will need to provide written clearance by a healthcare professional before being allowed to participate in any school-related physical activities. Any time a student is suspected of having or diagnosed with a concussion, written clearance for full participation will be required from a healthcare provider.

For additional information, parents and students can refer to administrative guideline 5340A, Student Accident, Illness/Concussion.

ACCIDENTS

If your child is injured at school, we will make him or her comfortable and then call you if a serious injury has occurred. If you cannot be reached, we will attempt to contact the emergency number that you have provided.

[View Policy 5340](#)

SUICIDE PREVENTION NOTICE & RESOURCES

SUICIDE PREVENTION NOTICE AND RESOURCES

For many years there has been a high rate of youth contemplating suicide in Wisconsin. State law requires that school staff members be notified annually of DPI's youth suicide prevention resources. In addition to the resources listed below, TASD Board Policy exists for suicide. There is a link to the TASD website for School Board Policies online.

Why should we worry about youth suicide? Are many kids really depressed or suicidal?

- » Suicide is the second leading cause of death among youth in Wisconsin.
- » One in six deaths overall among Wisconsin youth are self-inflicted, one in five injury-related deaths.
- » For youth ages 10-19, we have the 13th highest rate in the US, 42% higher than the U.S. average.
- » For students ages 10-14, Wisconsin's suicide rate is fifth highest in the U.S.
- » More than one in five Wisconsin high school students report symptoms of depression annually.

Suicide can be prevented—we're already making progress, but there is much more to do.

- » Wisconsin has seen a downward trend in completed youth suicides from 2005-2007. This is very promising;
- » school staffs are instrumental for continued support of prevention strategies.
- » Mental health concerns, such as depression and anxiety, usually contribute to attempted and completed suicides.
- » These concerns are treatable, but they must be recognized.
- » Everyone in a school community can identify and help students at risk for attempting suicide.

[View Policy 5350](#)

EARLY WARNING SIGNS TO LOOK FOR:

- » Decline in quality of school work
- » Social withdrawal
- » Personality and mood changes
- » Changes in sleeping and eating
- » Preoccupation with death

URGENT WARNING SIGNS TO LOOK FOR:

- » Threats about hurting self
- » Talking about a specific plan
- » Violent actions, rebellious behavior, running away
- » Hopelessness, helplessness, or worthlessness
- » Giving away favorite possessions

COMMON SUICIDE MYTHS & REALITIES

Myth: Asking a student how they are doing or if they have had thoughts about harming themselves will bring on thoughts of suicide.

Reality: Students are already thinking about and completing suicide. Carefully talking about the topic and getting students to help are keys to preventing suicide.

Myth: Students won't be honest when asked if they need help.

Reality: Students who are having thoughts about suicide are usually scared and want help. No one truly wants to die.

Myth: Only pupil service professionals can/should help a suicidal student.

Reality: Everyone in school can help prevent youth suicide by connecting students to appropriate helping professionals.

SUICIDE PREVENTION PROCEDURES

What to do if you are concerned about a student:

Teachers and other school staff are well-positioned to observe student behavior and to **ACT** if there is a suspicion that a student may consider self-harm. Young people lack the perspective of time. Suicide is a permanent solution to a temporary problem, but for kids, their problems can seem endless at this stage. If we get them through the crisis, there is a 90% chance that they will never attempt suicide.

ACT stands for Acknowledge, Care, and Tell.

Acknowledge feelings :

- » "I'm sorry to hear about this. It sounds really hard."
- » Telling a student to "get over it" or "move on" is not realistic for a person with depression.

Show **Care** and Concern:

- » "I'm worried about you. I don't want anything bad to happen to you or for you to be hurt."

Tell a member of your crisis team:

- » "Let's go talk with someone in the counseling office. They know how to work with students who have concerns like these."

These steps (Acknowledge-Care-Tell) are a central component of the "Signs of Suicide" program (SOS), an evidence-based school-wide intervention program. SOS kits for middle school and high school are available through your local CESA.

*State law protects school district employees and volunteers from civil liability for their acts and omissions when trying to intervene in a student's suicide. **It's safe to ACT!***

SUICIDE PREVENTION RESOURCES

Youth suicide prevention resources from DPI:

- » dpi.wi.gov/sspw/suicideprev.html

Other resources for school staff:

- » American Foundation for Suicide Prevention, www.afsp.org
- » Suicide Prevention Resource Center, www.sprc.org
- » Mental Health America of Wisconsin, www.mhawisconsin.org
- » Helping Others Prevent and Educate about Suicide, www.hopes-wi.org

Local resources:

- » National Suicide Prevention Lifeline 800-273-TALK (8255): Suicide hotline 24/7 free and confidential www.suicidepreventionlifeline.org
- » Kristin Brooks Hope Center 800-SUICIDE (784-2433): Suicide prevention hotline www.hopeline.com
- » National "YOUTH" Crisis Helpline: 800-999-9999
- » Person of Deaf/Hard of Hearing Hotline: TTY: 1-800-799-4TTY (4889)
- » Spanish Suicide Hotline: 877-SUICIDA (784-2432) or 888-628-9454
- » La Crosse – serving Buffalo, Crawford, Grant, Jackson, La Crosse, Monroe, Richland, Trempealeau & Vernon Counties: Suicide Crises Line Gunderson-Lutheran Medical Center & La Crosse Area United Way 24/7 608-775-4344
- » Great Rivers 211 help & crisis line



ELEVATOR USE

In order to use the elevator, students must bring written permission from a parent or doctor that justifies their need for this special service. Students will receive an elevator pass from the Counseling Office.

NON-EMERGENCY, INVASIVE PHYSICAL EXAMINATIONS OR SCREENINGS

Parents will be notified in advance of any non-emergency, invasive physical examination or screening which is required as a condition of attendance, administered by the school, or not necessary to protect the immediate health and safety of the student or other students (i.e. vision testing, scoliosis testing, vaccinations).

COLD WEATHER POLICY

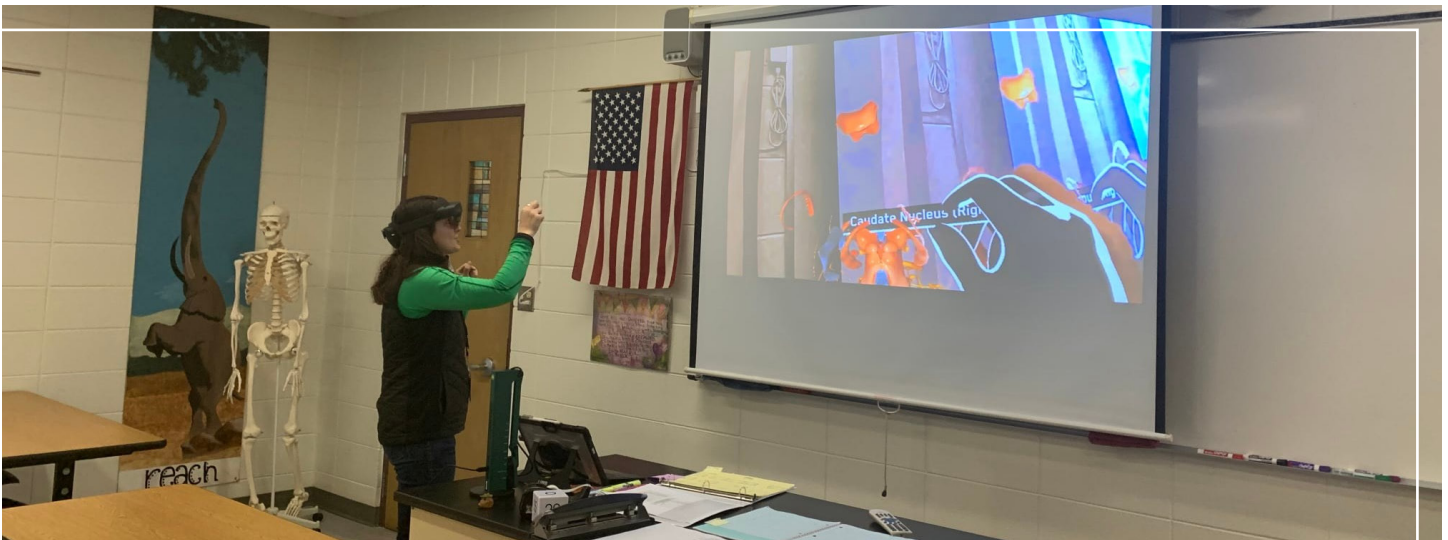
Students should dress appropriately for cold weather. Unless the weather is extreme, all children will be expected to remain outside during arrival times and recesses. Please do not send your child to school if he or she is too ill to participate in the outdoor recess activities unless prior arrangements have been made with the classroom teacher. The school will contact the parents of any child who frequently dresses inappropriately for the weather. Students will remain outdoors in the morning and will go out to recess when weather conditions permit. A temperature of 0 degree F is used as a guideline to determine if children should be out or in during recesses. However, the wind chill is a factor that will alter the 0 degree F guideline.

ANNUAL ASBESTOS NOTIFICATION JULY

In compliance with the United States Environmental Protection Agency (EPA) and the Asbestos Hazard Emergency Response Act (AHERA), this is notice that the Tomah School District has an Asbestos Management Plan at the school district office. The plan is available for inspection by the public, parents, and district employees. The district performs six month periodic surveillance of asbestos in February and August and full re-inspections every three years. For more information please contact the district office.

2009 WISCONSIN ACT 96 INDOOR ENVIRONMENTAL QUALITY MANAGEMENT PLAN TOMAH AREA SCHOOL DISTRICT ANNUAL NOTICE

The Tomah Area School District would like to inform staff, students, parents, and the public of the district's indoor environmental quality (IEQ) management plan. The plan was initially developed in 2013 and is reviewed as necessary. The plan was developed as deemed appropriate for the district. Questions and concerns should be directed to the IEQ Coordinator. Copies of the plan are available at the district office for a fee. The district office is located at 129 West Clifton St, Tomah, WI 54660



STUDENT CONDUCT

SCHOOL EXPECTATIONS

1. Students are not allowed to leave school grounds during the day without permission or supervision. Once a student arrives on campus (dropped off by parents, gets off bus), he/she must remain on school grounds.

2. Public Display of Affection (PDA) - The staff at school recognizes that genuine feelings of affection may exist between students; however, students will refrain from inappropriate intimate behaviors (such as, but not limited to, hugging, kissing, holding hands, etc.) on school grounds or at school related events. Repeated or especially inappropriate behavior in this regard may result in disciplinary actions.

3. No open containers of beverages or food are allowed in lockers, hallways, or the gymnasium. Parents are asked to discourage their child to bring an energy drinks or soda to school. All food and beverages must be consumed in the cafeteria or other designated eating areas. The only exception is students may bring a clear water bottle to school to use in the classrooms reducing the need to use the drinking fountain and miss instructional time. These containers must be used only for water.

4. Skateboards, razor scooters, rollerblades, bikes, and Heely shoes are not to be used on school property.

5. Book bags, fanny packs, purses and gym bags are to be kept in the student's locker unless other arrangements have been made with an administrator.

6. Laser devices are not allowed in school per state statute.

7. Possession and/or use of a Personal Communication Device (i.e. cell phones, tablets, MP3's, E-readers, etc...) by a student during the school day is a privilege that may be forfeited by a student who fails to abide by school expectations. Students may possess PCDs in school, on school property, during after school activities (e.g., extra curricular activities) and at school-related functions, they must be powered completely off (i.e., not just placed into vibrate or silent mode) and stored out of sight during school hours and during after school activities (e.g., extra-curricular activities). However, technology including, but not limited to, PCDs intended and actually used for instructional purposes (e.g., taking notes, recording classroom lectures, writing papers) will be permitted, as approved by the classroom teacher or the building principal. The use of a PCD to engage in non-education-related communications is expressly prohibited. Students may use PCDs while riding to and from school on a school bus or other Board-provided vehicles or on a school bus or Board-provided vehicle during school-sponsored activities, at the discretion of the bus driver, classroom teacher, or sponsor/advisor/coach. Distracting behavior that creates an unsafe environment will not be tolerated. Finally, students should not use these devices to take pictures or video at any time during the

school day unless specifically given permission by a teacher or administrator. If a student chooses to bring these items to school to use during these approved times, they must be used responsibly and the students maintain responsibility for these items. If the student feels ill and needs to contact home, he/she must call from our Counseling/Attendance Office. Doing so from a personal cell phone before reporting to the office not only slows down our ability to assist, it is in violation of school board policy. See Board Policy 5136 – Personal Communication Devices

8. Gambling of all types is prohibited.

9. No aerosol spray cans (i.e. deodorant, hairspray) are to be brought to school.

STUDENT CONDUCT & DISCIPLINE

Every student has the right to attend school and participate in activities in a safe and orderly environment, free from physical or verbal threats and behavior. In order to make this goal a reality, students are required to abide by the expectations laid out and follow school rules that have been established to create a safe and orderly environment.

Controlling behavior both in and around school takes a community effort. Tomah Middle School cooperates with agencies, including law enforcement, to maintain a proper learning atmosphere. However, parents and guardians play the most important role in developing good behavior and citizenship. [View Policy 5500](#)

CONSEQUENCES FOR INAPPROPRIATE BEHAVIOR

The school has the responsibility to establish standards that promote a positive and proper learning environment. In order to fulfill this responsibility, all students, staff, and parents must be committed to a strong discipline policy that encourages accountability for actions. If a student has difficulty recognizing his/her responsibilities in relation to the expectations and rules we have set out, an adult in charge will intervene and respond with an appropriate action. These actions may include:

- » Verbal reprimand/conference with school personnel
- » Restriction of privileges and activities
- » Contact with parent
- » Exclusion from class
- » Time spent in the Alec Room
- » Lunch or after-school detention
- » Parent/student conference with school personnel
- » Replacement/repair of damaged property
- » Half day detention
- » All day detention
- » In-school suspension
- » Out-of-school suspension
- » Assignment to Decisions I
- » Referral to police and possible citation
- » Recommendation for expulsion to the Tomah School Board

DRESS CODE

The Board recognizes that each student's mode of dress, clothing, and grooming is a manifestation of personal style and individual preference. The Board will not interfere with the right of students and their parents to make decisions regarding their appearance, except when their choices interfere with the educational program of the schools.

Accordingly, the Board prohibits student dress, clothing, or grooming practices which:

- » present a hazard to the health or safety of the student or to others in the school;
- » materially interfere with school activities, or substantially disrupt the educational environment; or
- » prevent students from achieving educational objectives because of blocked vision or restricted movement.

The principal or designee shall serve as the initial arbiter of student dress, clothing, and grooming.

Dress, clothing or grooming constitutes expressive speech if the individual wearing or displaying the dress, clothing, or grooming intends to convey a particularized message through the wearing or display and the likelihood was great that the message would be understood by those who viewed it. This standard shall apply whether the message is conveyed by depiction, words, or a combination of the two. If the dress, clothing, or grooming does not constitute expressive speech, it can be regulated by school officials.

Expressive speech in the form of dress, clothing, or grooming will be regulated consistent with applicable legal principles.

Expressive speech in the form of dress, clothing, or grooming prohibited if such speech is not protected by the First Amendment of the U.S. Constitution, such as dress, clothing or grooming that constitutes:

- » Obscenity;
- » Language or depictions intended to incite violence or incite the viewer to an immediate breach of the peace;
- » Defamation; or
- » A true threat.

Consistent with the legal parameters established under the First Amendment of the U.S. Constitution.

School officials can also regulate and prohibit dress, clothing, or grooming containing otherwise expressive speech if the dress, clothing, or grooming:

- » Can reasonably be viewed as promoting illegal drug use; or
- » Is vulgar, lewd, indecent, or plainly offensive.

Additionally, school officials can regulate dress, clothing or grooming if they can reasonably forecast that it will materially interfere with or substantially disrupt a school activity, such an interference or disruption actually occurs, or if the expression intrudes on the rights of other students. Such prohibited dress, clothing or grooming may include dress, clothing, or grooming that includes the use of , discriminatory language including racial or ethnic slurs, or negative stereotypes, Under this standard, the wearing or display of the Confederate flag during the school day and on school property is prohibited.

No protected speech may be prohibited on the basis of disagreement by school officials with the specific point of view expressed if the topic is otherwise permitted by this policy (e.g. permitting depictions of support for one political party, but prohibiting depictions of support for the other).

The District administration may establish the dress, clothing or grooming requirements for members of the athletic teams, bands, and other school groups when representing the District at a public event or within the context of school-sponsored and controlled curriculum or activities. Where appropriate, a uniform or specific dress, clothing, or grooming requirement shall be used for students when representing the District as described.

Students who violate the foregoing rules will not be admitted to class and may be subject to additional consequences. If the dress, clothing, or grooming cannot be removed or concealed, the student may be sent home after contact is made with the student's parent/guardian.

[View Policy 5511](#)

*March 4, 2024 Board Approved Addendum. PROHIBITIONS include but are not limited to:

1. Clothing or accessories that cover your face,
2. Clothing or accessories that may be used as a weapon,
3. See-through clothing,
4. Clothing or accessories with statements or images that are vulgar, obscene, or promote illegal drugs, alcohol, sex, violence, weapons, or gang activities,
5. Clothing or accessories that expose private areas,
6. Clothing or accessories with words, pictures, or caricatures based on stereotypes of a specific gender, race, ethnicity, nationality, religion, sexual orientation, or disability, additionally the wearing or display of the Confederate flag during the school day and on school property is not allowed, and
7. Hats, caps, beanies, bandannas, visors, hoods, sunglasses, and other head coverings. Students are expected to place such items in their lockers where they should remain until the end of the day. Students wearing "hoodie" sweatshirts are not allowed to wear the hood during the school day and will be asked to remove the sweatshirt if they do not comply.

RESPECT & STUDENT BEHAVIOR

- » Members of the THS Community will be in their classrooms on time,
- » All members of the THS Community will express themselves using respectful and appropriate language for a school environment,
- » Students will respect themselves and others by refraining from public displays of affection that are inappropriate for a school environment, and
- » THS Staff maintains the right to ask students to change clothing that may interrupt instruction, be offensive or show a lack of respect for school culture.

Students are reminded that different teachers have different classroom expectations. Therefore, it is each student's responsibility to become aware of what each teacher expects in the way of work and behavior and to conform to those expectations and standards. Tomah High School students are expected to behave in a mature, responsible manner in and out of class. See Tomah School Board Policy 5500, 5600, 5600A on Student Code of Conduct and student removal from class for more information pertaining to student expectations and behavior. Students suspended from school will not be permitted on school grounds during the days of suspension nor will they be permitted to participate in extra-curricular activities during their suspensions. Suspended students who appear on school property are subject to further disciplinary procedures to include referral to police department for trespassing.

RTI

RtI (Response to Intervention) is a systematic approach to providing every student with the additional time and support needed to learn at high levels. RtI's underlying premise is that schools should not wait until students fall far enough behind to qualify for special education to provide them with the help they need. Instead, schools should provide targeted and systematic interventions to all students as soon as they demonstrate the need. In Tomah, our main goal is to provide every student with the skills and knowledge needed to be self-sufficient and successful by the time he/she graduates from high school.

YOUTH GANGS

The Tomah Area School District bars all gangs and gang graffiti, dress, activity, gang-related material, gang affiliations and gang-related activities from school buildings, school-related activities, and school property at all times. School property, school buildings, and school related activities are to be considered "Neutral Territory". A "gang" is defined as any identifiable group or club which exists without the sponsorship of the school or the sponsorship of any recognized adult community or civic organization and which engages in antisocial or criminal behavior activity. See Tomah School Board Policy 5840 for additional information on Student Groups.

BULLYING / HARASSMENT

Every child has the right to feel safe and secure in the school environment. There will be no tolerance for harassment, intimidation or bullying. Bullying/harassment in school can affect student achievement and participation in school activities and has a huge emotional cost. All school districts are obligated to adopt policies and procedures responding to complaints of pupil harassment. Districts are also encouraged to take proactive steps to prevent pupil bullying/harassment. The Tomah School District has many programs in place to promote a safe environment for all students. Resiliency asset building, guidance and health curricula, protective behaviors, conflict manager and peer mediator programs are some of the programs that provide consistent, age-appropriate messages and skill development about respecting themselves and others.

Harassment and bullying behavior is taken very seriously. Students engaging in this behavior will be given a warning that their behavior is unacceptable and then, if it continues, progressive disciplinary action will occur. All day detention, suspension and a referral to the Tomah Police Department will occur if a student does not self-correct his/her inappropriate behavior.

We know you share our concern that all students feel safe and secure in our schools. In order to reach this goal, elimination of harassment, intimidation and bullying is essential. Please talk with your child about harassment and bullying. Preventing this type of behavior is a job for all of us - parents, educators and students. These expectations are in accordance with [Board Policy 5517](#), Student Anti-Harassment, and administrative guidelines which are printed in entirety in the Required Parental Notice and Board Policies section.

LOCKERS & LOCKER SEARCHES

The lockers at Tomah High School are school property and may be searched by school personnel at any time. Each student is assigned a locker upon entering school. Students are advised to use their own assigned lockers and to not share their locker with other students. Students are advised that they assume responsibility for their locker and for all contents in their locker. Each locker is equipped with a combination lock, which must be used to lock and secure the locker. If a student loses a lock, the student must purchase a new lock for \$5.00. If the lock is found, the student will be refunded \$5.00. Students are encouraged to keep their locker combinations in strict confidence to maintain locker privacy. The Tomah School District does not assume responsibility for the loss, damage, or destruction of any property stored in the student lockers. Students bringing large sums of money to school are urged to bring it to the office for safe keeping until it is to be used. Students will be responsible for any writing or vandalism on his/her locker and will be expected to clean the locker to remove any graffiti. Nothing shall be hung on the locker or displayed on the locker unless authorized by the school administration. See School Board Policy 5771 for more information regarding school lockers and locker searches.

OTHER UNACCEPTABLE BEHAVIORS

1. Any type of gambling is prohibited.
2. All food must be consumed in the cafeteria unless prior approval is received from an administrator. Water is allowed.
3. Blankets are not to be brought to school and carried throughout the school day.
4. Skateboards, Razor scooters, rollerblades, and Heelys are not to be used on school property unless prior approval is received from an administrator.
5. Squirt guns or water balloons are not be allowed.
6. Defacing school property or vandalism is a crime and will not be tolerated. The cost of any vandalism will be assessed to the student.
7. Possession and use of laser devices are not allowed in the school or on school property.
8. Unsanctioned contact activities such as tackle football are not allowed on school property.
9. Students are prohibited from using cameras and other electronic equipment and devices to capture or record the words (i.e. audio) and/or images (i.e. pictures/video) of any student, staff member or other person in the school or while attending a school-related activity, without express prior notice and explicit consent for the capture and/or recording of such words or images. Using a camera or other electronic equipment/devices to capture or record audio and/or pictures/video of an individual without his/her consent is considered an invasion of privacy and is not permitted, unless authorized by the building principal. Cameras and electronic equipment/devices are expressly banned from and may not be used at any time in any school situation where a reasonable expectation of personal privacy exists, i.e., locker rooms and bathrooms.
10. Students will respect themselves and others by refraining from public displays of affection that are inappropriate for a school environment. The staff at Tomah High School recognizes that genuine feelings of affection may exist between students; however, students will refrain from inappropriate intimate behaviors (such as, but not limited to, hugging, kissing, etc.) on school grounds or at school related events. Repeated or especially inappropriate behavior in this regard may result in disciplinary consequences.

HALL PASSES

Students should not be in the hallways during class time without a pass from a staff member specifically identifying the destination.

DETENTION PROCEDURE FOR STUDENTS:

Lunch detentions may be assigned for violations of school rules. Students who receive detentions must complete those detentions by the assigned date. Failure to complete detentions by an assigned date will result in extended detention, in-school suspension and/or out-of-school suspension.

ADMINISTRATIVE ACTION

When a student is referred to the THS administrative office for inappropriate behavior or attendance problems, one or more of the following consequences will occur:

1. Conference with student, parent and/or staff member
2. Removal from the specified location, bus, or activity
3. Restitution by payment or services rendered
4. Detention time assigned
5. Out-of-school suspension
6. Referral to school resource officer, law enforcement, or another agency
7. Removal from a class with a failure for the semester recorded. See School Board Policies 5500, 5600, 5600A for removal procedure
8. Removal of the student's privilege to attend or participate in extracurricular activities
9. Recommendation to the Board of Education for expulsion.

OPEN CAMPUS

9th grade students will have a closed campus lunch for 1st and 2nd semesters.

10th grade students will have a closed campus lunch for the 1st semester and an open campus for 2nd semester.

11th and 12th grade students will have open campus both semesters.

All students will be able to eat lunch in the cafeteria, the commons area, or in the outdoor patio at the high school during their campus lunch timeframe.

Students will not be allowed to eat lunch while sitting in vehicles parked on school grounds.

Students with an open campus may lose their privilege of open campus for the following reasons:

1. Fighting during the lunch period on or off school property
2. Witnessed or reported misuse of a motor vehicle off campus
3. Any illegal activity

TEXTBOOK FINES

Teachers are to turn in all fines for lost or damaged books at the end of each semester to the principal's secretary in the high school office. Fines are as follows:

Lost or Damaged Textbooks Beyond Use

Yrs Old	% of Cost
1	100
2	90
3	80
4	70
5	60
6	50
7	40
8	30
9	20
10	10

If the book is damaged beyond reasonable repair, the charge should correspond to the above Lost Book schedule.

If the cover is bent, writing is discovered on pages or cover, or other damage is evident, the following schedule should be followed:

Damaged Textbooks

Yrs Old	Cost - Hard Cvr	Cost- Soft Cvr
1	7.00	3.00
2	7.00	3.00
3	6.50	3.00
4	6.50	3.00
5	6.00	2.50
6	6.00	2.50
7	5.50	2.50
8	5.50	2.00
9	5.00	2.00
10	5.00	2.00

CARE OF MATERIALS

Students are responsible for all textbooks and library materials issued to them during the school year. All lost or damaged books and other school materials must be paid for. All money collected for damaged property is recorded by the office and paid to the proper fund for replacement purposes. If a lost book is found, money paid will be refunded

PETS

Children are not to bring pets or other animals to school unless prior arrangements have been made with the classroom teacher and principal. If a pet or other animal is brought to school for a special presentation, the school will need advanced notice in order to be able to inform parents of children with allergies. If a pet is allowed to come to school, a parent must bring the pet to school, carry the pet for the presentation, and take the pet home. Pets are not permitted on school buses. If a student brings an animal without prior permission, the parent will be called to school to pick it up. Wild animals are strictly forbidden, except under the supervision of a licensed adult.

[View Policy 8405A](#)



DESCRIPTION

In keeping with the philosophy of serving every child's needs, the Tomah Area School District provides many special services. The expertise of many persons is considered in the placement of your child: Guidance Counselors, Speech & Language Therapists, School Psychologists, Talented & Gifted Coordinator, and Exceptional Education Needs Teachers.

If you have questions on any of the services available to our students, or are seeking to use any of these services, please contact your school principal.

EDUCATION OF HOMELESS CHILDREN & YOUTH

Homeless children and youth must have equal access to the same free, appropriate public education as provided to other children residing in the district and be provided with comparable services. Homeless children /youth cannot be required to attend a separate school or program for homeless children and must not be stigmatized by school personnel. The school district's designated liaison for homeless children and youth is Dr. Paul Skofronick, Director of Pupil Services.

SCHOOL NURSES

TASD has school nurses that ensure our students have what they need to learn well in concerns to managing health concerns. The school nurses manage cases (create and coordinate care plans) for students who need additional physical and/or mental health support to be successful in school.

OP/TP & OTHER SPECIAL EDUCATION NEEDS

Students with a qualifying disability often have needs that require support that goes beyond what is usually offered or received in the regular school/classroom setting.

To ensure these students have the support they need, our Pupil Services Department is staffed with an Occupational Therapist, Physical Therapist, and several Special Education Instructors.

If you have questions regarding your student's support, please contact your school principal.

SCHOOL SOCIAL WORKER

TASD has one school social worker that helps our parents, students, and staff identify needs that interfere with learning. She works with students to get the services they need to resolve social, emotional and behavioral problems.

SCHOOL PSYCHOLOGISTS

TASD has three school psychologists that are uniquely qualified to support students' ability to learn and teachers' ability to teach. They apply expertise in mental health, learning, and behavior, to help children and youth succeed academically, socially, behaviorally, and emotionally.

COUNSELING

Tomah Area School District Provides comprehensive counseling services to all students. Our counselors are designated to schools and/or groups of students (by last name) to better establish relationships and acquaintances with students. We have counseling teams for our elementary schools, our middle school, and our high school; each with age-specific structures to best serve our students.

Elementary School Counselors: Designated to a school and provide services such as biweekly guidance lessons, play therapy, bibliotherapeutic experiences, active listening and academic/organizational skill development.

Middle School Counselors: Designated to a group of students based on last name and provide services such as guidance lessons, small group and individual counseling, career conferencing, behavior and crisis intervention.

High School Counselors: Designated to a group of students based on last name and provide services such as career and high education/training planning, testing, course planning, alternative schooling, and personal/social goal development.

[HTTPS://WWW.TOMAH.EDUCATION/PUPIL-SERVICES/PUPIL-SERVICES](https://www.tomah.education/pupil-services/pupil-services)

STUDENT PROMOTION/RETENTION

The promotion of students from the eighth to ninth grade is affected by State Statutes (ss.118.33)(6)(a). Beginning on September 1, 2002, no student may be promoted from the fourth grade to the fifth grade and from the eighth grade to the ninth grade unless the student satisfies the criteria for promotion in the Board of Education Grade Advancement Policy (5410). Effective September 1, 2003, the Grade Advancement Policy was expanded to all students in grades kindergarten through eighth.

Grade advancement decisions will be based on the four criteria below:

A. Student's Academic Performance—The student must perform at a basic level or above or have made adequate progress on seventy-five percent (75%) of the standards-based grade level skills.

OR

B. Student score on the State Standardized Assessment--Students must receive a score of proficient in the reading and math subtests of the State standardized assessment.

AND/OR

C. Teacher Recommendations—Secure a consensus recommendation from the grade advancement committee using the K-8 Grade Advancement Criteria Form. The grade advancement committee will consist primarily of teachers from whom the student has taken courses and can attest to the student's knowledge, academic performance and skill levels.

OR

D. Other Academic Criteria Specified by the School Board— Parent involvement is encouraged in the retention decision; however, the final decision rests with the School Board.

[View Policy 5410](#)



ACADEMICS

TIPS FOR SUCCESS

- » Provide a place, the kitchen table for example, for your child to do his/her homework and check to see that it is completed daily. You may help your child plan when to do his/her homework, explain directions, and make sure that he/she has the necessary materials, but your child should do the actual work.
- » Talk to your child about the papers he/she brings home from school and what he/she is learning.
- » If your child is in kindergarten, first, or second grade, read to your child or listen to him/her read to you on a daily basis.
- » If you child is in third, fourth, or fifth grade, make sure he/she has a library book to read. Talk to your child about what he/she is reading.

GRADING SCALE

The grading scale has been developed by the Tomah Area School District for high school use. The grading system used for 9th-12th grades reflects the system used by the State of Wisconsin for its testing program: Advanced, Proficient, Basic and Minimal. The high school report card is a standard based report card. This format helps you better understand your child's achievement of essential skills based on the Wisconsin Department of Public Instruction State Standards. These standards specify what students are expected to learn and be able to do at each grade level. For a more detailed explanation, talk with your child's teacher.

A+	99-100	4.00
A	93-98	4.00
A-	90-92	3.67
B+	87-89	3.33
B	83-86	3.00
B-	80-82	2.67
C+	77-79	2.33
C	73-76	2.00
C-	70-72	1.67
D+	67-69	1.33
D	63-66	1.00
D-	60-62	.67
F	0-59	0.00

ACADEMIC LETTER/ACHIEVEMENT

An academic letter will be awarded to students who have received a 3.70 or higher grade point average 3 out of 4 quarters of the school year. Students are recognized quarterly in the newspaper using the following criteria: 3.2-3.69 Scholastic Roll; 3.7-3.89 Honor Roll; 3.9 and up High Honor Roll.

PROGRAMS OF STUDIES

Students will have classes in the following subjects:

- » Language Arts
- » Social Studies
- » Science and Health
- » Math
- » Music
- » Art
- » Guidance
- » Exercise & Sports Science
- » Library Skills
- » Writing

REPORT CARDS

Parents will be kept informed of their child's progress through report cards and progress reports. Report cards are issued for academics to all students at the end of each quarter. Report cards will be mailed to the address of record to parents/guardians.

STUDENT RECORDS

An accurate record shall be maintained for all students attending the Tomah Area School District. Student records are an essential part of the educational process and are maintained in the interest of the student to assist the school in providing appropriate educational experiences. These records shall be collected and maintained under the supervision of the building principal. In accordance with state and federal law, the Tomah Area School Board has developed an extensive written policy regarding the content, accessibility and confidentiality of student records. A copy of this policy is available upon request from the building principal.

Copies of student records may be released to eligible students, or parents, or guardians of minor students under the following conditions:

- A. A written request is received.
- B. All behavioral records are interpreted by a qualified person prior to release.
- C. The school has 45 days to respond to the request.
- D. A reasonable charge shall be paid for copies

INCOMPLETES

Students with incomplete course work at the end of a grading term will receive an "I". Students must arrange with their teacher to make up work within two weeks of the close of the grading period or the grade automatically becomes an "F". Additional time may be allowed if special arrangements are made with the administration.

RURAL VIRTUAL ACADEMY

The Tomah Area School District is an invested member of the Rural Virtual Academy (RVA) which provides us with the ability to deliver a variety of online class options. If a family wishes to educate their child at home using online curriculum with instruction from a certified teacher or if a high school student is looking for an elective course not offered at Tomah High School but is available through a virtual classroom, RVA provides a solution. Students involved in RVA are still enrolled in the Tomah Area School District making them eligible for participation in many co-curricular activities. Contact your school principal or counselor for more details on how to access options available through the Rural Virtual Academy. Visit www.ruralvirtual.org for more.

THS GRADUATION REQUIREMENTS

4.0	English (Freshman & Sophomore required)
3.0	Social Studies (World History, U.S. I, U.S. II, and Econ/Civic Required)
3.0	Math
3.0	Science (Physical Science required)
1.5	Exercise & Sport Science (Freshman ESS and Sophomore ESS Fitness for Life required)
.5	Health
.5	Financial Literacy (required)
	<i>AP Macro Economics, Personal Financial Literacy or Financial Math will meet this requirement</i>
1.0	Vocational/Fine Arts/World Language
	<i>Any of the following: AgriScience, Art, Business & Information Technology, Family & Consumer Science, Industrial Technology, Music, or World Language</i>
10.0	Additional Credits
26.5	Total Credits

The credits necessary to graduate from Tomah Senior High School may not meet minimum requirements for admission to universities or technical colleges. Often a student needs to take additional appropriate coursework to be qualified for the next educational level. Students should check periodically with school counselors or college catalogs regarding specific school admissions requirements.

COLLEGE BOUND STUDENTS

All 4-year University of WI schools require a minimum of 13 core college-prep credits plus 4 "elective" credits (as listed):

4.0	English
3.0	Social Studies
3.0	Math (minimum of Algebra I, Geometry, Algebra II)
3.0	Natural Science
	4 Electives: 2 from above areas or foreign language, 2 from fine arts, computer science, and other academic areas.

Western Technical College credits may be earned for successful completion of designated courses in the following departments: Agriculture, Business Education, Computer Science, Family and Consumer Education, and Industrial Technology Education. It is strongly recommended that students take a minimum of 7.0 credits per year and 3.5 credits per semester. The recommended sequence is 7 credits each year. Many students will benefit from 7½ to 8 credits per year. Some classes (i.e. art courses, tech. ed. project courses) may require a fee to cover the cost of materials. The course instructor will notify students of specific amounts.

SCHEDULE CHANGE POLICY

Once the schedule is set and the staff hired, it becomes extremely difficult to honor course change requests and still maintain the integrity of the master schedule. Students will receive a copy of their course list in the spring and will have the opportunity to make corrections by June of the previous school year.

ALL schedule change requests must be made in writing (forms are available in the counseling office). Parent, teacher, and/or administrative approval for the change may be required. Up until the end of the previous school year, students can submit any course change requests and teacher requests for consideration. Any schedule changes submitted after the end of the previous school year will only be accepted for the following reasons:

1. Course Upgrade: A schedule change request form, applying for a class upgrade, must be submitted by DAY 5 of the semester the course is offered in. Teacher approval must be obtained for the addition of an upgraded class. Upgraded class examples include dropping an elective for an academic course, changing from regular level to advanced level courses, and adding courses, work experience or a youth apprenticeship which align with an identified career pathway. All other course changes need to be submitted by the end of the previous school year.
2. Complete Graduation Requirements
3. The student is placed incorrectly in a class or lacks prerequisites or teacher recommendation
4. Course Load Reduction (student does not have a study hall): A student who has an overload schedule (8 classes) may drop a class for a study hall within the first 10 days of the semester with no penalty (i.e. the dropped class will not result in a Withdrawal/Fail (W/F) grade).
 - e. After the 10th day of the semester, all dropped courses will receive a grade of W/F for the semester.
 - f. After the midquarter report of QUARTER 2 or QUARTER 4, all dropped classes will receive a grade of F for the semester.
 - g. A student who is already enrolled in a study hall and drops a course will receive a grade of W/F for the dropped course.

Not all requested changes will be granted. Changes are not official until processed through the counseling office. The student is required to attend the originally scheduled class and is responsible for the work until s/he receives a new schedule from the counseling office.

Mid-Quarter Dates	
1st Quarter	Oct. 2, 2023
2nd Quarter	Dec. 8, 2023
3rd Quarter	Feb. 21, 2024
4th Quarter	April 30, 2024

Last Day of Grading Periods	
1st Quarter Ends:	Nov. 3, 2023
2nd Quarter Ends:	Jan. 19, 2024
3rd Quarter Ends:	Mar. 22, 2024
4th Quarter Ends:	May 31, 2024

MID QUARTER PROGRESS REPORTS

Progress reports will no longer be mailed home. Parents are encouraged to use their Infinite Campus Parental Access to not only view their child's progress at the mid-quarter, but also at any time throughout the school year. This change is in efforts to reduce costs while using our online Parental Access for more frequent updates. If parent would like a progress report mailed home, please request this from our Counseling Office and they will be happy to assist.

PARENT/TEACHER CONFERENCES

Parents and students are encouraged to meet and talk with teachers throughout the year. The THS teachers will be available to discuss the courses they teach and students' progress at conferences. The conferences are for **all parents and students**, not just for the students who are doing unsatisfactory work.

Conferences for the 2023-2024 school year are scheduled for the following dates and times:

August 16, 2023	12:00 pm - 6:00 pm	THS Fall Festival
October 17, 2023	4:15 pm - 8:15 pm	Open Conferences
October 19, 2023	4:15 pm - 8:00 pm	Open Conferences
March 5, 2024	4:15 pm - 8:15 pm	Open Conferences
March 7, 2024	4:15 pm - 8:00 pm	Open Conferences

Parents are encouraged to contact teachers at any time throughout the school year with questions or concerns. Please stay up-to-date with student progress using Infinite Campus.

FAILURE TO COMPLETE THE SEMESTER

Tomah High School grants credit at the completion of the semester. A student who withdraws or transfers from Tomah High School prior to the end of the semester without completing all work and final exams for the semester will not be granted credit for the semester. Students who anticipate that they will not be able to complete a semester here should contact the guidance office and principal well in advance to make arrangements to complete all work for the semester.

TRANSCRIPTS

All transcripts are processed electronically through www.parchment.com. Click on the "send transcript" button. Follow the directions listed. All current high school students will receive their transcripts sent electronically free of charge. We will process transcripts as quickly as we can but do expect a turn-a-round time of 2 school business days.

STUDENT RECORDS

An adult student, or the parent or guardian of a minor student, shall upon request, be shown and provided with a copy of the student's progress records. An adult student, or the parent or guardian of a minor student, shall upon request, be shown in the presence of a person qualified to explain and interpret the records. Such pupil or parent or guardian shall, upon request, be provided with a copy of the behavioral records. The adult student, or the parent or guardian of a minor student, may seek amendment of the student's education records that they believe to be inaccurate, misleading or otherwise in violation of the student's privacy rights. See Board policy (Administrative Guidelines) 8330 for more information. It is the responsibility of the parents to notify the school of legal custodial changes.

An eligible student, or the parent(s)/guardian(s) of a minor student, has the right to file a complaint with the U.S. Department of Education for alleged District noncompliance with Federal Family Educational Rights and Privacy Act (FERPA) or the Protection of Pupil Rights Amendment (PPRA) requirements. The name and address of the office that administers FERPA is: Family Policy Compliance Office, U.S. Department of Education, 400 Maryland Avenue SW, Washington DC 20202-4605.

TRANSFER OF RECORDS

The Tomah School District will transfer student records to another school district only when written notice from another school district in which a student intends to enroll has been received.

GRADE IMPROVEMENT PLAN (GIP)

Students who receive two or more F's during biweekly grade checks will be assigned to the Grade Improvement Plan (GIP) during their lunch period. By attending the GIP, students will be able to work on missing assignments or projects with guidance and assistance from a teacher while they eat their lunch. Students who show progress and receive all passing grades by the end of the week will be excused from GIP. Failure to report to GIP may result in truancy and disciplinary actions based on the number of GIP sessions missed.

ACADEMIC INTEGRITY

If it appears to a teacher that a student may be involved in an incident of academic misconduct, including but not limited to, cheating on an exam, plagiarizing a paper, copying or printing from another student's computer files, interfering with another student's work, or having someone other than the student complete the assignment – the teacher will address the situation with the student. At this point the student will have the opportunity to respond and explain his or her perspective regarding the situation.

The teacher will review the evidence and if the teacher is persuaded that the student has not been involved, that no misconduct has occurred, or that no action is warranted, that will be the end of the matter. If the teacher concludes that academic misconduct has occurred, he or she may then proceed as listed below.

» Cheating:

- Cheating is the stealing of another individual's work and/or the willful intent of having answers written somewhere to use on tests or quizzes, looking at another individual's sheet to obtain answers in a testing situation, copying of another individual's homework assignment, having someone other than the student complete the assignment to hand in for a grade, or text messaging information or answers to another student.
- Consequences:
 - All students involved may receive a zero for that assignment.
 - Teacher will send a letter to parents/guardians.
 - Discipline referral sent to associate principal to be placed into student's discipline file.
 - After 3rd offense in the same course, student will be removed from class with a "WF" (withdraw/failure).

» Plagiarism:

- Plagiarism is the use of someone else's writing or ideas as your own and is a criminal act. J. C. Hodges and M. E. Whitten, in the 8th edition (1977:p. 372) of the Harbrace College Handbook (Harcourt Brace Jovanovich, Inc.), describe plagiarism in the following manner: If you, the student, fail to acknowledge borrowed material, then you are plagiarizing. Plagiarism is literary theft. When you copy the words of another, be sure to put those words inside quotation marks and to acknowledge the source with a footnote [or, in our case, a citation]. When you paraphrase the words of another, use your own words and your own sentence structure, and be sure to give a footnote [citation] citing the source of the idea. A plagiarist often merely changes a few words or rearranges the words in the source. As you take notes and as you write your paper, be especially careful to avoid plagiarism. Unless you are quoting directly, avoid entirely the sentence patterns of the source.
- TYPE 1 PLAGIARISM: Not Using Quotation Marks:
 - When you use someone else's words, always put them in quotation marks and cite the source within the body of the text as well as in the literature cited section.
 - If you include a quote, you must use the exact words of the author or it is a misquote.
 - Use quotations only when it is absolutely essential for the reader to know exactly what that particular person said word for word.
- TYPE 2 PLAGIARISM: Not Citing the Source
 - All information/ideas that are not part of general knowledge that you obtained from someone else, must be cited (within the sentence containing the information and in the literature cited section) even if you used your own words.
 - This is taken seriously in science (scientists are always skeptical of information).
- TYPE 3 PLAGIARISM: Paraphrasing is too close to source:
 - It is plagiarism to use someone else's sequence of sentences and just change a few words or their position in each sentence.
 - Read your sources of information, synthesize the material in your head, and then write what you know in your own unique way. –adapted from 2002 Marquette University
- Consequences:
 - Paper and/or assignment may receive an automatic grade of zero.
 - Teacher will send a letter to parents/guardians with copy of essay and original source document.
 - Discipline referral sent to associate principal to be placed into student's discipline file.
 - After 3rd offense in the same course, student will be removed from class with a "WF" (withdraw/failure).

WISCONSIN ACADEMIC EXCELLENCE SCHOLARSHIP

Wisconsin's Academic Excellence Scholarship is a State supported program, jointly administered by the Department of Public Instruction (DPI) and the Higher Education Aids Board (HEAB). The program offers scholarship recipients an exemption from specified tuition and fees for post high school education at eligible higher education institutions in Wisconsin.

By February 25th of each school year, the Board of Education will designate the appropriate number of senior(s) from the high school with the highest grade point average in all subjects as scholars eligible to receive an Academic Excellence Scholarship.

Qualifications beginning with the Class of 2021:

The following standards must be met to qualify for the Academic Excellence Scholarships. The student and alternates must:

- a. be a resident of the United States who is either a U.S. citizen or an alien lawfully admitted for permanent residence;
- b. be a Wisconsin resident as defined in 36.27 Wis. Stats.;
- c. have attended the high school for three (3) consecutive semesters immediately prior to the second semester of the year which qualifies him/her for graduation, including participation in a District-recognized foreign exchange program for no more than two (2) semesters, and have earned credits to attain senior status;
- d. be accepted to and planning to attend a Wisconsin University, College, or Technical College;
- e. be selected based on the Grade Point Average (GPA) on the student's official transcript as of the last day of the semester which ended just prior to February 25th.

Students enrolled under full-time public school Open Enrollment Program and the Chapter 220 Program who qualify based on the standards identified above are eligible for the Academic Excellence Scholarship in the school they actually attend.

Selection: Qualifying recipients will be selected based upon the cumulative grade point average (GPA) on the student's official transcript as of the last day of the semester which ended just prior to February 25th. The designation of scholar will be awarded to the qualifying student(s) with the highest grade point average. The grade point average (GPA) will be non-weighted.

Tie Breaking Procedure: Academic Excellence Scholarships will be awarded to the qualifying students with the highest cumulative grade point average. If two (2) or more students have identical cumulative grade point averages, the following tie-breaking criteria, in order, will be used to determine the Academic Excellence Scholarship designee(s):

- a. The student with the highest Laude score through seven (7) semesters of high school shall be the scholarship designee.
- b. If the first criterion does not break the tie, the student having earned the greatest number of overall credits through seven (7) semesters of high school shall be the scholarship designee.
- c. If the first two criteria do not break the tie, the student having the highest composite American College Test (ACT) score available at the end of the seventh semester of high school shall be the scholarship designee. It is the student's responsibility to report the score to the high school.

In the unlikely event that the first three (3) criteria do not break the tie, the District will provide an additional scholarship to accommodate the tie. This scholarship will be under the same terms as the Academic Excellence Scholarship and will use new or existing scholarship monies. Except for the limitation on the number of designated scholars, the faculty of the high school shall select the applicable number of seniors for designation as scholars and shall certify, in order of priority, any remaining seniors with the same grade point average as alternates for the scholars or, if there is no remaining senior with the same grade point average, any remaining seniors with the next highest grade point average, but not less than 3.800 or the equivalent, as alternates for the scholars.

ACADEMIC PLANNING

COUNSELING SERVICES

A full-time Counseling Department is available to assist students in areas school related and in personal, career planning, and educational planning. Listed below are a few of the services available to students in the guidance office:

- » **Counseling:** The counseling service is available to all students.
- » **Records:** Behavioral and permanent progress school records are maintained for each student.
- » **Testing:**
 - » **ASVAB:** September 28, 2023 8:00 am
 - » **PSAT/NMSQT:** Testing window is October 1 to October 31, 2023
 - » **Pre-ACT Secure Assessment 9th and 10th grade:** Testing window is March 18 to April 26, 2024
 - » **FORWARD Exam (10th grade):** Testing window is March 18 to April 26, 2024
 - » **ACT plus Writing 11th grade:** March 12, 2023
 - » **ADVANCED PLACEMENT (AP) TESTS:**

Date of Test	AM Test (8 am)	PM Test (12 pm)	PM Test (2 pm)
May 6, 2024	<ul style="list-style-type: none"> • US Government and Politics 	<ul style="list-style-type: none"> • Art History • Chemistry 	
May 7, 2024	<ul style="list-style-type: none"> • Human Geography • Microeconomics 	<ul style="list-style-type: none"> • Seminar • Statistics 	
May 8, 2024	<ul style="list-style-type: none"> • English Literature & Composition 	<ul style="list-style-type: none"> • Comparative Gov. & Politics • Computer Science A 	
May 9, 2024	<ul style="list-style-type: none"> • Chinese Language and Culture • Environmental Science 	<ul style="list-style-type: none"> • Psychology 	
May 10, 2024	<ul style="list-style-type: none"> • European History • United States History 	<ul style="list-style-type: none"> • Macroeconomics • Spanish Literature and Culture 	
May 10, 2023	<ul style="list-style-type: none"> • Art and Design: 8:00pm ET is the deadline for AP Art and Design students to submit their three portfolio components as final in the AP Digital Portfolio. 		
May 13, 2024	<ul style="list-style-type: none"> • Calculus AB • Calculus BC 	<ul style="list-style-type: none"> • Italian Language and Culture • Precalculus 	
May 14, 2023	<ul style="list-style-type: none"> • English Language & Composition 	<ul style="list-style-type: none"> • African American Studies • Physics C: Mechanics 	<ul style="list-style-type: none"> • Physics C: Elect / Magnetism
May 15, 2024	<ul style="list-style-type: none"> • French Language and Culture • World History: Modern 	<ul style="list-style-type: none"> • Computer Science Principles • Music Theory 	
May 16, 2024	<ul style="list-style-type: none"> • Spanish Language and Culture 	<ul style="list-style-type: none"> • Biology • Japanese Language and Culture 	
May 17, 2024	<ul style="list-style-type: none"> • German Language and Culture • Physics 1: Algebra -Based 	<ul style="list-style-type: none"> • Latin • Physics 2: Algebra Based 	

- » **Career Information:** Current catalogs are available for post high school vocational and occupational planning.
- » **Post-Secondary Plans:** Counseling staff are available to assist students with resources for post high school planning (i.e. 4-year college, 2-year college, military, apprenticeships, employment, etc.)
- » **Financial Aid:** Information is available for processing of financial aid forms for high education.
- » **Career Center:** WCIS is available for individual career planning and decision-making.
- » **Transcripts:** All transcripts are processed electronically through www.parchment.com. Click on the "send transcript" button. Follow the directions listed. All current high school students will receive their transcripts sent electronically free of charge. We will process transcripts as quickly as we can, but do expect a turn-a-round time of 2 school business days.

COURSE OFFERINGS

A complete list of course offerings can be obtained in the current course description booklet from the guidance office or on the [THS Academics Page](#).

FINANCIAL AID & SCHOLARSHIPS

Federal Financial Aid includes grants, scholarships, and loans. There are many state, federal, and institutional programs of financial aid with varying and differing requirements. At most institutions, the student does not apply for a particular grant, scholarship, or loan, but rather for financial aid in general. In addition to the financial aid program, several fine local scholarships are available to graduates of Tomah High School. These scholarships are sponsored by local individuals/groups interested in youth of this school district. Interested students may download applications from the [THS Scholarships Page](#) after January 1st.

SENIOR SCHOLASTIC AWARDS

May 8th, 2023 in the THS Auditorium at 7:30 pm.

START COLLEGE NOW

Start College Now is a program that allows eligible high school juniors and seniors to take courses during the school year either on Western Technical College's campus, online, or through distance learning. You can even earn credit at both your high school and Western for these courses. Your Western career coach can assist in determining appropriate courses.

Students must be enrolled in high school, have completed 10th grade with good academic standing, meet course prerequisites, have written approval from a parent or guardian, and have an acceptable disciplinary record. Please see your counselor for more details. [View Policy 2271.01](#)

PART TIME PUBLIC SCHOOL OPEN ENROLLMENT

Beginning in the 2018-19 school year, a pupil enrolled in a public school in the high school grades may attend public school in a nonresident school district for the purpose of taking a course offered by the nonresident school district. A pupil may attend no more than two courses at any time in nonresident school districts.

Wis. Stat. 118.52

Please see your counselor for specific information on Part-time Public School Open Enrollment.

EARLY COLLEGE CREDIT PROGRAM (ECCP)

The ECCP statute allows Wisconsin public and private high school students to take one or more courses at an institution of higher education for high school and/or college credit. Under this section, "institution of higher education" means an institution within the University of Wisconsin System, a tribally controlled college, or a private, nonprofit institution of higher education located in the state. See Tomah School [Board policy 2271](#) for more information.

ECCP APPLICATION AND TIMELINE

- » Step 1: Students talk with their high school counselor to see if it's a good fit for them. They will consider how the class aligns with academic plans and whether they meet the pre-requisite for taking a college level class. Ask when, and to whom, the materials must be submitted to at your high school.
- » Step 2: Student requests information from the institution of higher education where they would like to take classes
- » Step 3: Student obtains an ECCP participation form from their high school counselor
- » Step 4: Student turns in completed application to the counseling office. (Deadline: February 1 for summer; March 1 for Fall semester; October 1 for Spring semester)
- » Step 5: High school principal determines amount of high school credit to be awarded and submits application to Board of Education for approval. High school principal sends Board approved applications to counseling office.
- » Step 6: Student follows the application or registration requirements at the campus or program they would like to take classes with. Make sure to submit any required documentation (i.e. high school transcripts along with any prerequisite documentation (AP scores).
- » Step 7: Enroll in your class
- » Step 8: Student submits transcript and books and/or materials to the counseling office after successful completion of course.
- » Step 9: Counseling office sends transcript and application to authorized school personnel that approves reimbursement of funds for student.
- » Step 10: Completed application and transcript are placed in student cumulative file.

REACH/XELLO and Academic Career Planning (ACP)

Students at Tomah High School participate in an advisement program called REACH throughout their high school career. REACH stands for Resources for Educational Achievement and Career Help. Students will be grouped with students from their same grade level and will work together once a week with a Tomah High School faculty member as their advisor. Every REACH period, students will work on Academic and Career Planning, using the XELLO program to develop skills to ensure success in high school, develop a career portfolio, and make connections with other students, staff and the community while creating a positive environment to learn and grow. Students will use ACP to connect their high school classes with future career goals and allow them to plan coursework to help them achieve their goals.

COLLEGE CAMPUS VISITATION POLICY

The on-site visit is probably the most important part of the overall process in selecting a college, university, technical institute, or a military career. It is for this reason that the administration allows each junior and senior up to two days excused absences, at the discretion of the high school administration, for the express purpose of making a visit. It is understood, however that these appointments should be scheduled on non-school days when possible. Parental and office approval are required in advance of the planned visit. It is necessary for the student to pick up official approval in the High School Office and return from the trip with verification of the visit from the school. Failure to do so may result in an unexcused absence.

AP COURSES

Students taking AP (Advanced Placement) courses will be eligible for an AP factor which will be added to the student's GPA. This factor will be .05 added to the GPA for each credit of Advanced Placement coursework in which the student earns a passing grade. (One-half of the factor will be added for a one-half credit AP course.) Please see your guidance counselor for questions related to AP courses.

NATIONAL HONOR SOCIETY

Article I: Name & Purpose:

- » Section 1 - The name of this chapter shall be the Tomah High School Chapter of the National Honor Society.
- » Section 2 -The purpose of this chapter shall be to create an enthusiasm for scholarship, to promote worthy leadership, to stimulate a desire to render service, and to foster a high standard of character in the students of Tomah High School.

Article II: Membership

- » Section 1 - Membership in this chapter is an honor bestowed upon deserving students by the faculty, and shall be based on the criteria of scholarship, leadership, service, and character.
- » Section 2 - Eligibility
 - a. Candidates eligible for induction to this chapter must be members of the junior or senior class. Students may not induct after the fall of their senior year.
 - b. To be eligible for selection to membership in this chapter, the candidate must have been in attendance for a period of at least one semester at Tomah High School.
 - c. Candidates eligible for selection to the chapter shall have a minimum cumulative unweighted GPA of 3.5. This scholastic level of achievement shall remain fixed, and shall be the required minimum level of scholastic achievement for admission to candidacy. All students who rise in scholarship to or above this standard may be admitted to candidacy for selection into the society.
 - d. Upon meeting the grade level, attendance, GPA standard requirements, candidates shall then be considered based upon their service, leadership, and character.

Article III: Selection of Members

- » Section 1- The selection of members to this chapter shall be by a majority vote of the Faculty Council consisting of five faculty members appointed by the principal and chapter Adviser. The chapter Adviser shall be the sixth, nonvoting, ex officio member of the Faculty Council.
- » Section 2 - Prior to selection, the following shall occur:
 - e. Students' academic records shall be reviewed to determine scholastic eligibility.
 - f. Students who are eligible scholastically ("candidates") shall be notified and asked to complete and submit the National Honor Society Application for further consideration for selection.
 - g. The faculty of Tomah High School shall be requested to evaluate candidates determined to be scholastically eligible using the official evaluation form outlined according to a predetermined rubric.

LAUDE POINT SYSTEM

Beginning with the class of 2021 Tomah High School will begin honoring students based on the Laude System. This system will replace the Valedictorian/Salutatorian system. For more information on the Laude System and related classes, please see the 2020-21 THS Course Description Book on the [THS Academics Webpage](#).

HONORS REQUIREMENTS FOR SENIORS

The Laude score determines the level of honors earned by the student for graduation.

- Summa cum Laude: 45.00 points and above
- Magna cum Laude: 38.00 – 44.99 points
- Cum Laude: 20.00 – 37.99 points

- h. The Faculty Council shall review the application and faculty evaluations in order to determine membership.
- » Section 3 - The selection of new active members shall be held once a year, following official Tomah Area Schools' distribution of semester grades over the summer; the induction ceremony will occur by the end of October each year.
 - » Section 4 - Candidates become members when inducted at the induction ceremony.
 - » Section 5 - Once selected and inducted, all members are expected to maintain the standards by which they were selected and maintain all obligations of membership.
 - » Section 6 - An active member of the National Honor Society who transfers from this school may be given a letter indicating the status of his or her membership and will be signed by the principal or chapter adviser at his or her request.
 - » Section 7 – A student who is an active member of the National Honor Society who transfers to this school from another will automatically be accepted for membership in this chapter. The Faculty Council shall grant the transferring member one semester to attain the membership requirements and, thereafter, this member must maintain those requirements in order to retain his or her membership.

Article IV: Discipline & Dismissal

- » Section 1 - Any member who falls below the standards of scholarship, leadership, service, or character may be considered for dismissal from the Tomah High School Chapter of the National Honor Society. A member of the National Honor Society is expected to maintain his or her academic standing and take an active role in leadership and service in his or her school and community.
- » Section 2 - If a member's cumulative GPA falls below the standard in effect when he or she was selected (minimum cumulative GPA of 3.50), he or she will be given a written warning and a time period (generally of one semester period) for improvement. If the cumulative GPA remains below standard at the end of the warning period, the student will be subject to further disciplinary action by the Faculty Council, which may include dismissal from the chapter.
- » Section 3 - If a member fails to perform any of the published obligations of membership, he or she will be given a written warning and a time period for improvement. If the obligation remains unmet at the end of the warning period, the student will be subject to further disciplinary action by the Faculty Council, which may include dismissal from the chapter.
- » Section 4 - Violation of the law or school regulations as outlined in the discipline policy of Tomah High School can result in dismissal of a member. These violations include, but are not limited to: DWI; stealing; destruction of property; cheating; truancy; or possession, selling, or being under the influence of drugs or alcohol at school or at school-related activities.
- » Section 5 - Offenders of the school conduct code (such as use of profanity, failure to comply, unexcused absence, excessive tardiness, etc.) will receive written warning notification. A conference may be requested by either party (Faculty Council, student, or parent). If the member is involved in another violation of the school conduct code, the member may be considered for dismissal.
- » Section 6 - In all cases of pending dismissal:
 - i. The member will receive written notification from the adviser or Faculty Council indicating the reason for possible dismissal. The member and adviser will discuss the written notification in a conference. Situations that involve flagrant violations of school rules or the law can warrant disciplinary action without a written warning although a hearing must still be held (see below).
 - j. The member will be given the opportunity to respond to the charge against him or her at a hearing before the Faculty Council prior to the vote on dismissal. The Faculty Council will then vote on whether or not to dismiss member. A majority vote of the Faculty Council is needed to dismiss any member.
 - k. The results of the Faculty Council vote will be reviewed by the principal and then, if confirmed, expressed in a letter sent by the Faculty Council to the student, his or her parents, and the principal. Dismissed members must surrender any membership emblems to the adviser.
 - l. The Faculty Council's decision may be appealed to the principal and afterwards through the school district discipline policy.
 - m. When a student is dismissed or resigns, he or she is no longer a member and may not be reconsidered for membership in the National Honor Society.
- » Section 7 - In lieu of dismissal, the Faculty Council may impose disciplinary sanctions upon a member as deemed appropriate.

Article V: Officers

- » Section 1 - The officers of the chapter shall be president and vice
- » Section 2 - Student officers shall be elected selected by the Faculty Council during the same meeting in which they select new inductees. Applicants will fill out the appropriate and provided application form. All returning active members are eligible to run for either position available.
- » Section 3 - A majority vote from the Faculty Council shall be necessary to elect any officer of this chapter. The following duties should reflect the responsibilities developed for officers in the local chapter:
- » Section 4 - It shall be the duty of the president to determine meeting agendas; run chapter and executive board meetings; monitor members participation in meetings and activities and intervene as needed; and keep the advisor informed of any and all NHS-related activities, concerns, and ideas.
- » Section 5 - The vice president shall assist in planning and implementing service projects and activities; solicit ideas for service projects from members; monitor service activities; and report service plans, progress, and outcomes to the chapter advisor.
- » Section 6- Either the president or the vice president shall take attendance at all meetings; help post and distribute ideas and service needs to the chapter; hold students accountable to attending service events as well as be an example by attending service events themselves; helping to collect documentation hours from chapter members.

Article VI: Meetings

- » Section 1 - Meetings of this chapter shall be monthly.
- » Section 2 - All chapter members are expected to attend all regularly scheduled chapter meetings and if they are unable to they must provide an explanation and seek out the agenda to the meeting that they missed.

Article VII: Activities

- » Section 1 - The chapter shall determine one or more service projects for each semester.
- » Section 2 - All members shall regularly participate in these projects.
- » Section 3 - These projects shall have the following characteristics: fulfill a need within the school or community; have the support of the administration and the faculty; be appropriate and educationally defensible; and be well planned, organized, and executed.

Article VIII: Powers

- » Section 1 - The chapter adviser is given the authority to supervise the administration of chapter activities, as delegated by the school principal.
- » Section 2 - The principal shall reserve the right to approve all activities and decisions of the chapter.
- » Section 3 - These bylaws are designed to amplify provisions of the national constitution and cannot contradict any components thereof. The chapter is obligated to adhere to the provisions of the national constitution in all activities it undertakes.

Article IX: Amendments

- » Section 1 - These bylaws may be amended by a two-thirds vote of the chapter, provided notice of the proposed amendment has been given to members at least one month prior to the vote. The exceptions are Articles III and IV (selection and discipline), which are developed by the Faculty Council with the approval of the principal.
- » Section 2 - Bylaws and amendments must be consistent with the constitution of the National Honor Society.

COMMUNICATIONS

DISTRICT WEBSITE

Parents are encouraged to frequently visit the district website at www.tomah.education. This is where parents and guardians can find the names and email addresses of teachers, administrators, check the current school calendar, and locate other information and news from the School District.

INFINITE CAMPUS

Parents can create an account to view things like lunch account balance, attendance and grades. This is also where you will update your contact information.

SCHOOL CLOSINGS/LATE STARTS/EARLY DISMISSALS

In case of school closings or early dismissals, please do not call the school. This information will be circulated through the following channels:

RADIO: WBOG-AM 146 Berry 94); WYXM-FM96.1 (Mix 96.1); WTMB-FM 94.5; WCOW-FM97.1 (Cow Country); WIZM-FM 93.3 (Z-93).

TV: TV WKBT Channel 8; WXOW Channel 19; the local PEG Channel.

ONLINE: School district website; Facebook; Twitter

[View Policy 8220A](#)

DISTRICT NEWSLETTERS

We love to recognize and celebrate all of the great things happening through our district. We routinely produce two publications to share our celebrations with the community:



The PAWS is a newsletter and district calendar curated monthly to share events, time-sensitive reminders, or updates. This is sent out to parents from the District Administrator, posted to our district Facebook page, and to community organizations. Anyone can receive the PAWS Newsletter directly to their email inbox each week by signing up [here](#).

[HTTPS://WWW.TOMAH.EDUCATION/DISTRICT-PUBLICATIONS](https://www.tomah.education/district-publications)

DIRECTORY DATA

Directory data includes those records which contain the student's name, address, telephone number participation in officially recognized sports, dates of attendance, date of graduation, or awards received. The form to request withholding student directory information is available upon request in the school office.

[View Policy 8305](#)



The HOWL is a newsletter curated three times each year to share our celebrations of student, staff, and district successes. It is published and mailed via Every Door Direct Mailer (USPS) to our stakeholders. It can also be found on our website.

TECHNOLOGY

Tomah Area School District

TECHNOLOGY DEPARTMENT

The following terms are those approved by the Board in the Technology Device Agreement (version 1.8).

The District's goal in providing technology services is to promote educational excellence by facilitating resource sharing, innovation, and communication. This **agreement** is made effective upon the receipt of the technology device, between the Tomah Area School District, the student receiving a device and his/her parent(s) or legal guardian. While there are differences between school procedures, the information contained within this document applies to all T ASD schools. The student and parent(s), in consideration of being provided with a device, software and related materials for use while a student hereby agree as follows:

1. Equipment

- a. T ASD defines a "Technology Device" to include not only the computing device (e.g. iPad, Chrombook, Windows laptop, Cellular Internet Hotspot) but also the charging system for the device, the carrying/protective case and any pen (screen touch device). Devices and their components are handed out in a complete set and the parent/guardian/child cannot choose to take only part of a set.
- b. Ownership: The technology device being issued to all students is the sole property of the Tomah Area School District. Each device is on loan to the student and must be used in accordance with the policies and procedures listed below, the Tomah Area School District Acceptable Use Policy and any civil/criminal applicable laws.
 - i. All students are required to use the district-supplied carrying case equipped with a shoulder strap or handles.
 - ii. The Tomah Area School District will retain records of the serial numbers of provided equipment.
 - iii. This agreement remains in effect for a substitute device.

2. Actions Required in the Event of Inoperable, Damaged or Lost Equipment

- a. Responsibility for Negligence
 - i. The student is responsible for maintaining a 100% working device at all times. The student shall ensure that the device is not damaged. Refer to the Standards of Proper Device Care section of this document for a description of expected care. The Tomah Area School District reserves the right to charge the student and parent according to the cost table below due to either gross (intentional) negligence or accidental negligence **as determined by administration**.
 1. Examples of gross negligence include, but are not limited to:
 - a. Damage or loss resulting from unattended and/or unlocked device while at or away from school.
 - i. Examples: locker rooms, hallway benches, lunch room tables.
 - b. Lending device to others.
 - c. Using the device in an unsafe environment and/or in an unsafe manner.
 - ii. In the event the device is inoperable, damaged or lost, the Tomah Area School District has a limited number of spare devices for use while the device is repaired or replaced. An immediate replacement cannot be guaranteed at all times.
 - iii. Any damage to or loss of the device should be promptly reported to a teacher or administration. Parents and students are encouraged to file a police report if the device is lost, vandalized or believed to be stolen.
 - iv. The student may not opt to keep a broken device or to avoid using the device due to loss or damage.
- b. Actions Required in the event of inoperable, damaged, or lost
 - i. In the event the device is inoperable, damaged or lost, the Tomah Area School District has a limited number of spare devices for use while the device is repaired or replaced. An immediate replacement cannot be guaranteed at all times.
 - ii. Any damage to or loss of the device should be promptly reported to a teacher or administration. Parents and students are encouraged to file a police report if the device is lost, vandalized or believed to be stolen.
 - iii. The student may not opt to keep a broken device or to avoid using the device due to loss or damage.
- c. Technical Support and Repair
 - i. All attempts will be made to repair a damaged device. The Tomah Area School District does not guarantee that the technical support team will make the device operable. In the event that the device cannot be repaired, a substitute may be supplied.
 - ii. All repairs will be performed by Tomah Area School District staff. Students and/or parents/guardians are not to attempt to repair the device on their own.

3. Standards of Proper Device Care

You are expected to follow all the specific guidelines listed in this document and take additional precautions to protect your assigned device. Loss or damage resulting in failure to follow the details below may result in full financial responsibility.

- a. Student Responsibilities:
 - i. Bring the charged device and charging unit to school every day (if you forget them, substitutes may not be available).
 - ii. Students are to have only the district created account on the device. Students are not permitted to create a secondary account.
 - iii. At the end of the school day, students should log out of their device and perform a shutdown procedure. This will ensure any district or device updates are performed.
 - iv. Keep the device either secured, where others do not have access, or within your sight at all times. For example, during

athletic events, practices and trips, store the device in a secure place (your locked hallway locker). Devices left in bags and backpacks, or in unattended classrooms or locker rooms are considered “unattended” and may be confiscated by school personnel as a protection against theft. Unattended and unlocked equipment, if stolen –even at school- will be the full financial responsibility of the student. Other non-exclusive examples of Gross Negligence are listed below:

1. Avoid use in situations that may result in loss or damage. For example, never leave devices in the hallway, school vans, in the gym, in the locker room, on playing fields or other areas where it could be damaged or stolen.
2. Do not let any other individuals use the device. Loss or damage that occurs when anyone else is using your assigned device will be your full responsibility.
3. Adhere to the Tomah Area School District’s Acceptable Use Policy at all times and in all locations.
4. Read and follow general maintenance alerts from school technology personnel.

c. General Care

- iv. The non-exclusive examples below will result in student being responsible for 100% of the repair or replacement cost.
 5. Attempting to remove or change the physical structure of the device, including keys, screen, cover or casing.
 6. Removing or interfering of any identification placed on the device.
 7. Keep the equipment clean. Avoid eating or drinking while using the device.

d. Carrying the Device

- v. Always completely close the lid of the device before moving it, even for short distances.
 - i. Always store the device in the carrying bag with the bag strap across your shoulder.
 - i. Do not place any pressure on the device, even while in the case, as this will damage the screen and other components.

e. Screen Care

The device screen can be easily damaged if proper care is not taken. Screens are particularly sensitive to damage from pressure.

- i. Do not touch the device screen with anything.
- ii. Clean the screen with a soft, dry anti-static cloth or with a screen cleaner designed specifically for LCD type screens.
- iii. Never leave any object on the keyboard. Pens or pencils left on the keyboard will crack the screen when the lid is closed, resulting in a damaged device charge to the student.

f. Battery Life and Charging

- i. Arrive to school with a fully charged battery. Establish a routine at home to charge your device overnight.
- ii. Avoid using the power adapter in any situation where someone is likely to trip over the cord, or be damaged.
- iii. If the cord becomes damaged and electrical wires are exposed, report the damage immediately to a staff member and cease using that charger. The danger of electrical shock or electrical fire is significant.
- iv. Close the lid of the device when it is not in use, in order to save battery life and protect the screen.

g. General Information

- i. Sound must be muted at all times unless permission is obtained from the teacher for instructional purposes.
- ii. Chromebooks are not set up to print.

4. Device Use and Conduct

a. Students may not use the network resources to:

- i. Create, send, access or download material which is abusive, hateful, harassing or sexually explicit.
- ii. Download or stream Internet based media when it slows the performance of the network for all users. The district will monitor the network for network performance related issues.
- iii. Alter, add or delete any files that affect the configuration of a school device.
- iv. Conduct any commercial business
- v. Conduct any illegal activity (this includes adhering to copyright laws).
- vi. Violate the Academic Integrity Policy
- vii. Access the data or account of another user (altering files of another user is considered vandalism).
- viii. Install any software onto devices; to copy district school software (copying school owned software programs is considered theft).
- ix. Forward email commonly known as “SPAM,” Unsolicited Commercial Email (UCE), or “junk” email.

b. For Safety Reasons Students should not:

- i. Give out their home address or phone number to anyone on the Internet
- ii. Give password(s) to anyone
- iii. Post anonymous messages

c. Discipline

Any student who violates these rules will be subject to disciplinary action at the discretion of administration. Serious or

repeated violations may result in the student's use of technology restricted and/or revoked.

- i. Below is a list of general consequences for disciplinary issues that may arise as a result of non-compliance with the policies of this agreement:
 - » Step 1 Student receives verbal warning from administration
 - » Step 2 Student receives a referral and loses use of device for one day
 - » Step 3 Student receives a referral and loses use of device for one week
 - » Step 4 Student receives a referral and length of loss of device will be determined by school administrator.

In these cases, "inappropriate use" is defined by students using the device for things other than directed by the teacher either during a class or study hall. When this privilege is lost, the student's device will be stored in the main office (or other agreed upon location) until able to return it to the student. Based on teacher request, the student may be allowed to check out their device for a class, but it will be returned after that class.

Should a student be using their device for more serious incidents such as viewing inappropriate websites or material, more significant consequences (including the removal of district technology resources) may be necessary.

d. Legal Issues and Jurisdiction

The Tomah Area School District owns and operates the equipment and software that compose our network resources. The district is obligated to take steps to insure that all resources are used legally, hence any illegal use of district resources is prohibited. All content created, sent, accessed or downloaded using any part of the district's network and/or resources is subject to the rules stated in this policy. District administration monitors our network and/or resources and may find it necessary to investigate incidents even if they happen after hours and/or outside of school. As the owners of our network and/or resources, including the email system, the district administration reserves the right, if needed, to remotely access, open, examine and/or delete electronic files without notification to the user.

In addition, the district account holders take full responsibility for their access to the district's network resources and Internet. Specifically, the district makes no warranties with respect to school network and resources nor does it take responsibility for:

- i. The content of any advice or information received by an account holder
- ii. The costs, liability or damages incurred as a result of access to the school network resources or the Internet; any consequences of service interruptions.

This document exists in concert with all other building and district policies, rules, guidelines and procedures. Specific items not covered here may be addressed by other building or district policies, rules, guidelines or procedures at the discretion of administration.

5. Legal and Ethical Use Policies

- a. Monitoring
 - i. The Tomah Area School District may monitor device use using a variety of methods to assure compliance with district policies in addition to the Legal and Ethical Use section 5b. The district is in compliance with regulations for filtering Internet access.
- b. Legal and Ethical Use
 - i. All aspects of the Tomah Area School District Policy 7540 and 7540.03 remain in effect, and in addition to this section.
- c. Allowable Customizations
 - i. The student is permitted to alter or add files to customize the assigned device to their own working styles deemed school appropriate (i.e., background screens, default fonts).
 - ii. Downloading or installing any software without permission from the Tomah Area School District is prohibited.
 - iii. Nothing "permanent" may be used to personalize the Chromebook or the carrying case (i.e. Sharpie markers, stickers that won't easily peel off, sticky tape that will leave adhesive, etc.).
 - iv. All personalization needs to be added to the "front cover" of the Chromebook.
 1. Suggested Ideas for Personalization:
 - b. Peel off decals for walls.
 - c. Peel off decals for cars/windows.
 - d. Students may purchase a wireless mouse if desired.

6. Terms of Technology Agreement

I understand and agree with the following terms of this agreement:

1. I will return the device at the established due dates and times.
2. I understand that I may be billed for repair/replacement costs, if the device is damaged, lost or not returned properly.
3. I will treat this device with care and maintain the equipment in clean condition.

4. I will not write, etch or attach anything into or onto this device or any of its components.
5. I will avoid using the device in situations that are conducive to loss or damage.
6. I will keep the device either secured, locked in a locker where others do not have access, or within my sight always.
7. I will follow general maintenance alerts and advice from district technology personnel.
8. I will promptly report any malfunction, loss, damage, or theft to the proper personnel.
9. I will always transport the device within the district supplied carrying/protective case.
10. I will adhere to the Tomah Area School District's Acceptable Use Policy when using this device at all times and locations.
11. Tampering with the device is a violation of this Acceptable Use Policy.
12. I understand that only Tomah Area School District devices are allowed to be used on Cellular Internet Hotspots that are provided by the Tomah Area School District.

7. Cost and Charge for Damage to Devices

1. Any damage deemed intentional (by school administration or technology department staff) will be billed at the amount necessary to return the device to working order.
2. Any damage deemed accidental (by school administration and technology department staff) will be billed at a flat amount of \$25 per incident.
3. After two damage incidents in a given school year, all damage will be billed at the amount necessary to return the device to working order.
4. Loss of any component will be billed at the replacement amount for that component.
5. Device/Component Costs are to be charged at the below rates:
 - a. iPad: Full replacement \$450; Device only \$350; Case/Keyboard \$100; Charger \$15; Charger Cable \$5
 - b. Chromebook: Full replacement \$275; Device only \$255; Case \$20; Case Strap \$5; Charger \$52; Screen \$170; Keyboard \$43; Hinge Set \$30; Cover (top/bottom) \$20; Battery \$35
 - c. Windows Laptop: Full replacement \$1,200
 - d. Cellular Internet Hotspot: Full replacement \$200

Technology Policies

[ag7540.03 Student Education Technology Acceptable Use and Safety](#)

[7540 Technology](#)

[7540.02 Web Content, Apps, and Services](#)

[7540.03 Student Technology Acceptable Use and Safety](#)

LIBRARY MEDIA CENTER (LMC)

The focus of our school Library Media Centers is to provide a place for active study. Student exploration of all the resources in the LMC is encouraged and the positive benefits of reading are promoted.

LMC Guidelines:

- » All students must check out LMC materials using their student I.D. number and are responsible for any materials checked out in their name. Students should not share their student I.D. number or loan out their checked out materials to anyone.
- » Checkout time for regular books and magazines is two weeks and may be renewed once. Materials must be returned to the LMC to be renewed.
- » Students with overdue items or LMC fines will not be allowed to check out additional materials until such problems have been resolved. Students who lose or damage LMC materials will be charged the replacement cost of the reading material.
- » The LMC is open from 7:30 A.M. – 3:30 P.M.
- » Students must bring their assignment notebook with a pass from their teacher when coming from a class or directed study.



COMPLAINTS IN REGARD TO CURRICULUM/LIBRARY MATERIALS

[School Board Policy 9130](#) provides for a parent's right to request that his or her child not have to use a given material, provided a written request is made to the appropriate building principal. [View Policy 2522](#)

TRANSPORTATION

Tomah Area School District

TRANSPORTATION DEPARTMENT

The *driving* force for Tomah's education

ESTABLISHING TRANSPORTATION ARRANGEMENTS

Bus transportation to school is a service provided by the school district to students meeting specific distance requirements. If you would like to request transportation, please visit our website to fill out a short form OR call our transportation office directly. [View Policy 8600](#)

BUS DRIVER SAFETY PROCEDURES

Proper transportation of students is a matter of continuing concern and it is imperative that all staff members associated with student transportation adhere to the guidelines which have been designed to maximize the safety of students. [View Policy ag8605](#)

VIDEO CAMERAS

Video cameras are used on school buses to help ensure the safety and well-being of all passengers. Videotapes may be used as part of the disciplinary procedure. [View Policy ag8600](#)

SCHOOL DELAYS & CANCELLATIONS

If school is delayed, cancelled, or released early, due to weather, etc. the following media will be notified: Radio stations: WCOW, WIZM, and WBOG. Television stations: WKBT (channel 8) and WXOW (channel 19). You may also visit the following websites: www.tomah.education, LaCrosseTribune.com, WKBT.com or WXOW.com. Many of these media providers have free automated notification systems, which can send the message to your phone or computer. You can sign up by visiting their website.

STUDENT VEHICLES ON SCHOOL PROPERTY

Please see page 16 of this handbook for information on Parking Permits and Parking Lot rules.

CHANGES TO BUS TRANSPORTATION

Consistency in pick up and drop off location is the best policy for student safety. Permission to ride an alternate bus will only be granted in an emergency situation. Switching buses to ride to another students' house in a non-emergency situation will not be allowed. If you are seeking permission to ride an alternate bus, you must contact your child's principal to discuss this possible change. If permission is granted, the Transportation Department will be contacted by the school on your behalf. When possible, we kindly ask that at least 24-hour notice is given.



STUDENT EXPECTATIONS AND STANDARDS

Bus riding is considered a privilege and an extension of the school day. [View Policy 8600](#)

In order for a student to retain this privilege, he/she must conform to the following requirements:

1. Remain seated when the bus is in motion.
2. Keep head, hands, and arms inside the bus.
3. Remain in the seat assigned to him/her.
4. Act respectfully. Scuffing, fighting and obscene language will not be tolerated.
5. Do not litter on the bus. Help keep the bus clean by picking up litter including food or other debris on the bus.
6. Pay for damage to the bus which is a result from inappropriate behavior and outside regular wear and tear.
7. Be at the authorized loading place and prepared to board at the scheduled time, morning and afternoon.
8. Follow the recommended procedure when crossing the roadway. When leaving the bus, stand 10 to 12 feet out in front of the bus and cross only when the driver signals you to do so.
9. Inform the bus driver, if possible, when he/she will be absent.
10. Cooperate with the bus driver at all times.
11. Follow any rules set up by their specific driver.
12. Cell phone usage is permitted at the discretion of the driver. Ring tones are to be turned off and taking pictures is prohibited.
13. Obtain permission to ride a different bus. No student will be allowed to ride a bus other than his/her assigned bus without permission. A note, written and signed by the parent/guardian, must be sent to school for the principal, or designee, to sign and then the note should be given to the bus driver. [View Policy 8600B](#)

DISCIPLINARY PROCEDURES

Upon having an issue with a student, the driver will discuss the issue with the student to resolve it. They will inform the student that if the behavior continues, they will contact the student's parent/guardian and the student will receive a written bus referral.

The District retains the discretion to determine the severity of the issue/incident and may skip one or more of the following steps in order to provide consequences that are appropriate for the offense.

REFERRALS: It is our BOE approved process to escalate behavior issues through four referrals of increasing severity. The referrals will start as a phone call from the driver to the parent/guardian to discuss the issues and a bus discipline referral will be submitted. The fourth referral is subject to a minimum of three days suspension from transportation services. A face-to-face meeting will be held with the student, the Principal, a representative from the Transportation Department, and the parent/guardian. The student may be suspended until the meeting is held provided contact has been made with the parent/guardian notifying them of such. Administration will use discretion for additional consequences depending on the severity of the behavior.

LIMITATIONS: This Transportation Discipline Procedure does not override the District Administration's discretion to take additional, separate action, or to impose more severe consequences in appropriate cases. Parents should also be on notice that, while efforts will generally be made to contact them as part of Transportation Discipline Procedures, certain students, types of conduct, and related investigations may not always make immediate contact with parents possible or appropriate. Parental contact will be made as soon as appropriate and when matters such as pupil safety, law enforcement involvement, pupil confidentiality, and the integrity of related investigations are properly addressed.

TRANSPORTATION POLICIES

[8600 Transportation](#)

[8605 Use of PCD's by District Employees who Operate Board-Owned or Operated Vehicles](#)

[8640 Transportation for Field and Other District-Sponsored Trips](#)

[8651 Nonroutine Use of School Buses](#)

[8660 Transportation by Private Vehicle](#)

[ag8600 Transportation](#)

[ag8600A Unusually Hazardous Area Designations](#)

[ag8600B Student Conduct on Buses](#)

[ag8605 Bus Safety Procedures](#)

[ag8606 Transportation for Students with Disabilities](#)

CONTACT US

Ph: 608-374-7377

www.tomah.education/transportation

FOOD SERVICES

Tomah Area School District

FOOD SERVICES DEPARTMENT

The Tomah Schools Food Service offers breakfast and lunch at each of the elementary schools. Children are encouraged to participate in the hot meal program. Students may also bring their own lunches from home. At the beginning of each month the monthly lunch and breakfast menu will be available online. If you wish to join your child for lunch, please call the school office by 8:30 a.m.

MEAL PRICES (23-24 School Year)

Elementary (K-5)	\$3.20
Middle (6-8)	\$3.35
High School (9-12)	\$3.45
Adult Lunch	\$4.25
Milk	\$0.50

STUDENT FOOD SERVICE ACCOUNTS


The breakfast, lunch, and milk program are operated with a computerized account system. A lump sum of money may be deposited in a student's account on the first day of school. This account will stay with the student through graduation. If a child moves between schools, the account will remain with the child. If a child moves from the district, money deposited may be withdrawn and a check issued upon request. Parents will be notified when their child's account is nearly depleted. Parents have the ability to view activity on their child's account via Parental Access.

FREE AND REDUCED BREAKFAST PROGRAM

Every student receives an annual notice and application form informing parents/guardians of the child nutrition programs offered in the district and the eligibility requirements for free or reduced price meals. Notices are distributed at the Elementary Open Houses, Middle School Fall Rally, and at the High School when class schedules are distributed. If you qualify for free or reduced lunch, you also qualify for a free or reduced breakfast. Milk break, however, needs to be paid by each student, regardless of breakfast/lunch status. Please take advantage of this opportunity from our food service staff to help your child get off on the right foot for an alert and healthy day.

GENERAL FEDERAL USDA CHILD NUTRITION PROGRAM

1. The National School Breakfast and National School Lunch Programs, are programs the school district chooses to offer, to help reduce the cost of meals for families, it is not a required program for the district to participate in.
2. Families not meeting federal income guidelines for free meals are expected to pay the cost of the meals consumed by their children.
3. The NSB and NSL Programs do not require children with an outstanding balance on their meal account be served a meal.
4. Students who qualify for free meals shall not be denied a reimbursable meal even if they have a Negative Balance or Delinquent Debt.
5. No children will have a Federally Reimbursable Meal taken from them once they have been served.



Start the day off with a nutritious breakfast beginning at 7:30 a.m.- 7:55 a.m. each day in the cafeteria. The meal changes daily and will consist of delicious foods such as: Waffles, French Toast, Pancakes, Omelets, Scrambled Eggs, Sausage, Yogurt, Apples, Grapes, Bananas, Oranges and Milk & Cereal.

STUDENT FOOD SERVICE ACCOUNT POLICY

Good Standing Balance: Any account that has a monetary value greater than the low balance amount set will be considered to have a Good Standing Balance.

Low Balance: A Low Balance will be any High School or Middle School account equal to or less than \$5.00 and any Elementary School account equal to or less than \$3.00.

1. All students will be given a low balance notice when their account is equal to or less than the low balance value set by the District. Students will be instructed to give the low balance notice to their parents/guardians.
2. The building administrator or designee at each elementary school building will run a low balance report every day, Monday through Friday, when school is in session.
3. High school and middle school students will receive a low balance notice at the point of service from the computer operator daily as they come through the breakfast or lunch line.
4. Parents/guardians can also set up a low balance email notices through their students' Infinity account.

Ala Carte/Extra Items Ala Carte/Extra Items are food items sold separately and are not part of a federally reimbursable complete meal. (Examples include milk consumed during milk break, extra milk, extra entrees, water, and juice.)

1. Any account that has less than or equal to \$0.00 shall not be permitted to purchase ala carte items.
2. Cash can only be used to purchase ala carte items if the account is equal to or greater than \$0.00.

Negative Balance A Negative Balance will be any account that is equal to or less than negative one cent.

1. Accounts will be allowed to reach a negative value of five (5) times the cost of a high school lunch.
 - a. For example if the cost of a high school lunch meal is \$3.00, then a negative balance of \$15.00 can be incurred. ($\$3.00 \times 5 = \15.00)
 - b. Family accounts will be considered one account.
2. Once an account reaches the allowed negative value, the building administrator or designee will contact the parents/guardians of the account using phone or email, in addition to mailing a letter home to inform them the account/s must be in Good Standing.
 - a. At this time the building administrator or designee will determine if the family of the negative account holder is in need of assistance to help cover cost.
 - i. Examples of assistance are:
 1. Providing a free and reduced meal application to see if they qualify. Note: This will help to cover future costs but will not cover the current value owed.
 2. Apply for money from the Krecji Fund. 22 through school administration.
 3. Accessing any account setup by the building or district to help cover food service costs.
 3. If assistance is not available, the parents/guardians of the account will be asked by the building administrator or designee to send a meal with their student until the account is in Good Standing.

Delinquent Debt Delinquent Debt will be any account that has reached the negative value of ten (10) times the cost of a high school lunch or more (example: $-\$3.00 \times 10 = -\30.00 or more).

1. Once an account is Delinquent the following procedures will be put in place until the account is in Good Standing:
 - a. Elementary School Students will be directed to the school office by the building administrator or designee before meal service to pick up a snack pack (a grain, fruit, protein, beverage) if they did not bring a meal.
 - b. Middle School Students will be directed to the Middle School office by the building administrator or designee before lunch to pick up a snack pack if they have not brought a meal.
 - c. High School Students in the morning will be directed to the school office by the building administrator or designee and informed of one of the options:

- i. in order to eat a school provided meal they must pay in full, or
- ii. provide a meal from home, or
- iii. pick up a snack pack in the High School office before lunch.

2. The Delinquent Debt account will be passed onto the District Office for collection when it is delinquent for 30 days.

[View Policy 8500](#)

SCHOOLPAY ONLINE PAYMENT SYSTEM

The Tomah Area School District has an online lunch payment system integrated into our Infinite Campus platform. Parents need to have an account under the system to be able to start an on-line payment. You can find a link for this on your Infinite Campus homescreen. Cash and checks are also accepted at your student's school.

You can pay with your credit/debit card; however, there is a convenience fee for this service. You can call the Food Service office to combine your students' meal accounts into a single family account to avoid paying multiple convenience fees.

CAFETERIA EXPECTATIONS

1. Students are required to eat their lunch in the cafeteria unless they are assigned elsewhere.
2. Students are encouraged to go to the bathroom to wash their hands before entering the cafeteria.
3. Students are expected to behave in an orderly manner in the cafeteria. Running, shouting, pushing, littering, line cutting, fighting, swearing, needless changing of seats, throwing food, and other disrespectful or dangerous behavior will not be tolerated.
4. Students are to take their tray and any eating utensils and garbage to the designated area when they are finished eating.

EXTRA SERVINGS

Students who choose to have extra servings of any one component will be charged ala carte pricing for each extra individual item; an additional serving of fruit or vegetable with your complete meal is the exception. This applies to all students including free and reduced.

Students need money in their accounts to purchase extras in the lunch line. An example of an extra is juice, a second entrée, or another milk. If there is no money in the lunch account to cover extras, we do deny students extra items.



FOOD SERVICES POLICIES

[8500 Food Services](#)

[8510 Wellness](#)

[8531 Free & Reduced-Price Meals](#)

[8540 Vending Machines](#)

[ag8500 Food & Beverage Sales](#)

CONTACT US

Ph: 608-374-7356

www.tomah.education/food-services

ACTIVITIES & CLUBS

Students may participate in more than one activity as long as they do not conflict. The Middle School Philosophy promotes full participation in all extra-curricular activities.

In order to provide students with the opportunity to participate in athletics and more than one extra-curricular activity, Wednesdays have been set aside as the meeting date for some clubs and organizations. Students involved in athletics are excused from practice on Wednesday to participate in these other school-sponsored groups. Required meeting dates will be established so students know the dates of meetings they must attend and so advisors to these student organizations will have students in attendance and will be able to accomplish their goals. A copy of this schedule will be distributed to students at their first organizational meeting.

LIST OF ACTIVITIES

Our activity programs are grouped into four (4) categories and are governed by eligibility requirements and a code of conduct:

- » Group A. Athletic Teams
- » Group B. Non-Athletic Teams that may perform or compete
- » Group C. Recognized Clubs/Organizations which do not perform or compete
- » Group D. Honorary Positions

ELIGIBILITY REQUIREMENTS

Middle School: Non-public school students in grades 6-8 who reside in the district may participate in Group A activities. *Refer to Board Policy 9270 - Home-Based or Private Schooling.*

High School: Students in a home-based education program may participate in the interscholastic athletic programs and other extra-curricular programs on the same basis and to the same extent as students attending the Tomah Area School District. Students in a private school cannot participate in interscholastic athletic programs but may be allowed to participate in noncurricular activities at the high school providing they meet any eligibility criteria established for the activity. *Refer to Board Policy 9270 - Home-Based or Private Schooling.* If a student graduates at mid-year, WIAA eligibility ends with the last day of the first semester.

REQUIRED PAPERWORK

- » Activities Code Agreement (Groups A-D)
- » Emergency Information and Participation Release Form (Groups A-D)
- » Activity Practice Transportation Agreement (Group A, High School Only)
- » WIAA Athletic Eligibility Information Bulletin (Group A)
- » Physical Exams/Alternate Year Forms (Group A)

To view full Code of Conduct, Academic Requirements to participate, Disciplinary Procedures, and other activities-related policies, [View Policy po5505](#).

For a description and list of all activities available to students, visit our [Activities Department webpage](#).



CONTACT US
Ph: 608-374-7359
www.tomah.education/athletics

ANNUAL NOTICES

HUMAN GROWTH & DEVELOPMENT INSTRUCTION

The District shall provide parents annually with an outline of the human growth and development program used in their child's grade level as well as information regarding how the parent may inspect the complete program and instructional materials. Prior to use in the classroom, the program shall be made available to parents for inspection.

The District shall notify the parents, in advance of the instruction and give them an opportunity, prior to instruction, to review the complete program and instructional materials and of their right to have their child excused from the instruction. The notice shall state that, in the event a student is excused, that student will still receive instruction under Wis. Stat. 118.01(2)(d)2 c unless exempted and under Wis. Stat. 118.01(2)(d)8. [View Policy 2414](#)

HOMEWORK

The Board of Education acknowledges the educational validity of out-of-school assignments as adjuncts to and extensions of the instructional program of the schools. "Homework" shall refer to those assignments to be prepared outside of the school by the student.

The District Administrator shall develop administrative guidelines for the assignment of homework according to these guidelines:

A. Homework should be a properly planned part of the curriculum to extend and reinforce the learning experience of the school.

B. Homework should help students learn by providing practice in the mastery of skills, experience in data gathering, and integration of knowledge, and an opportunity to remediate learning problems.

C. The number, frequency, and degree of difficulty of homework assignments should be based on the ability and needs of the student and take into account other activities which make a legitimate claim on the student's time.

D. As a valid educational tool, homework should be assigned with clear direction and its product carefully evaluated.

E. The schools should recognize the role of parents by suggesting ways in which parents can assist the school in helping a student carry out assigned responsibilities.

F. Homework should always serve a valid learning purpose; it should never be used as a punitive measure. [View Policy 2330](#)

PROCEDURES FOR INSPECTION OF SURVEYS ADMINISTERED OR DISTRIBUTED TO STUDENTS

This guideline describes the procedure for parents to use when requesting a survey created by a third party or a survey containing any one (1) or more of the following items:

A. political affiliation(s) or beliefs of the student or his/her parents;

B. mental or psychological problems of the student or his/her family;

C. sex behavior or attitudes;

D. illegal, anti-social, self-incriminating or demeaning behavior;

E. critical appraisals of other individuals with whom respondents have close family relationships;

F. legally-recognized privileged and analogous relationships, such as those of lawyers, physicians, and ministers;

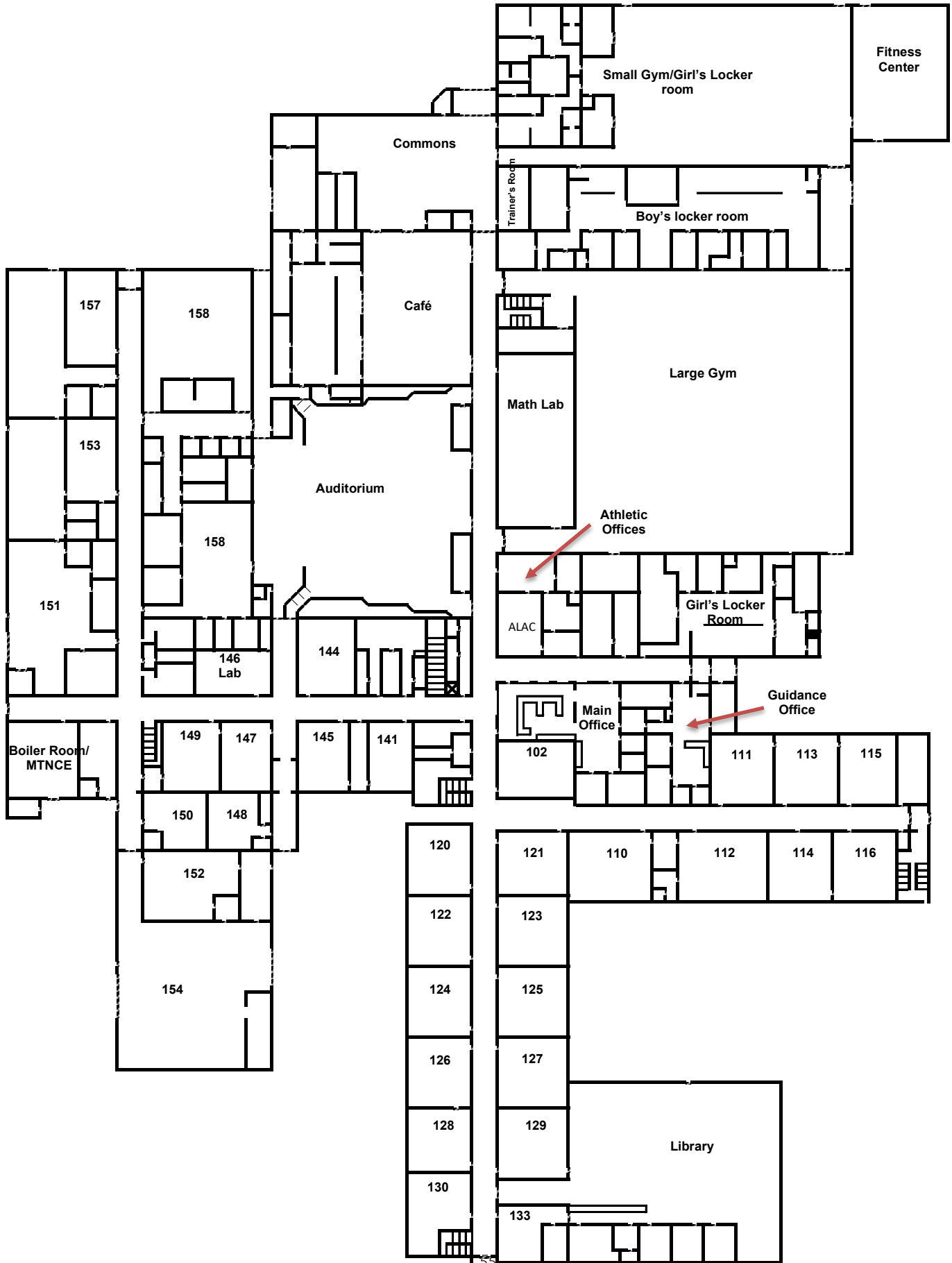
G. religious practices, affiliations, or beliefs of the student or his/her parents;

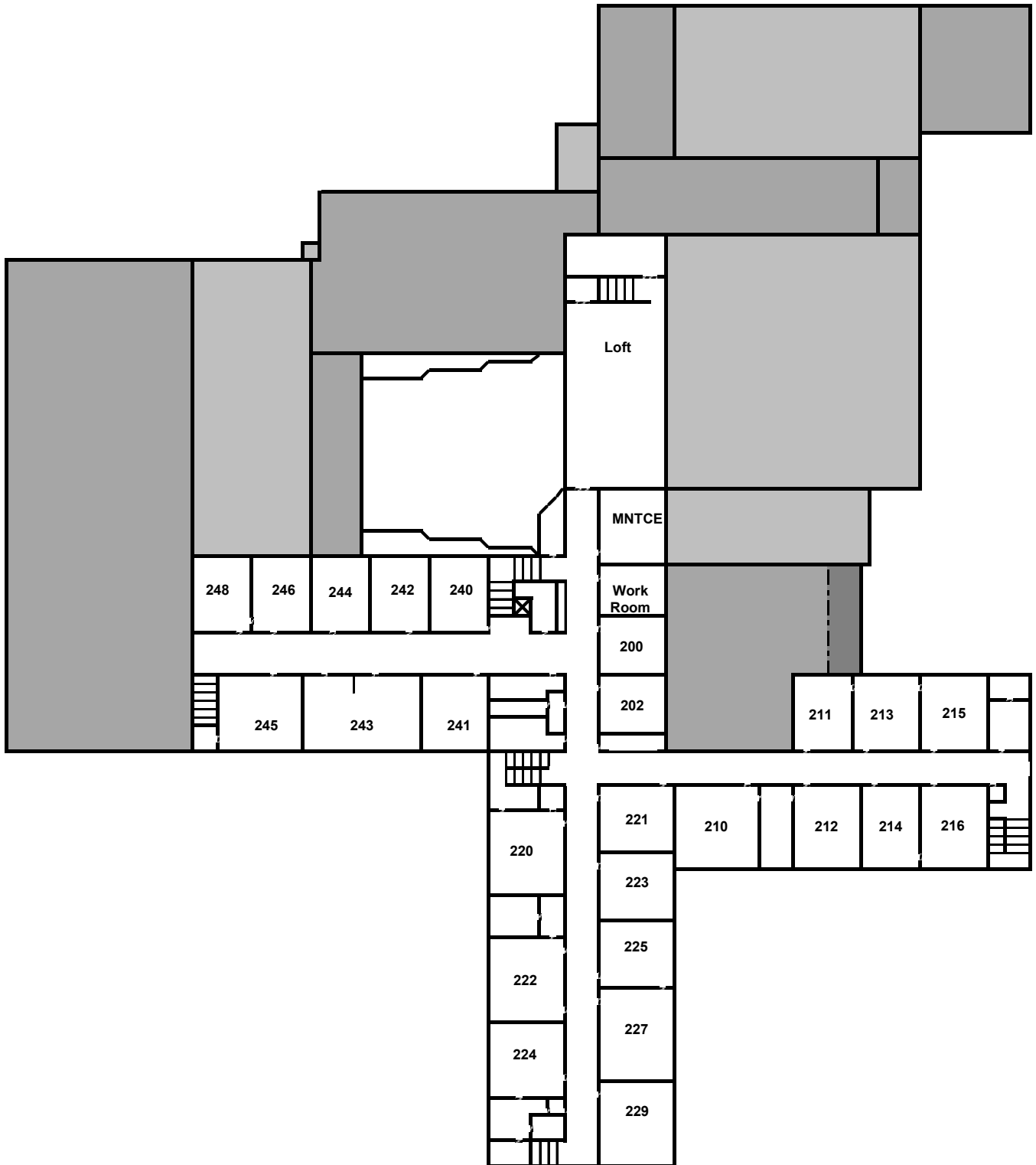
H. income (other than that required by law to determine eligibility for participation in a program or for receiving financial assistance under such a program).

Parents who want to inspect a survey should report to the school office where a copy of the survey is kept and provided for parents to review. The survey may not be copied or removed from the school office.

Where written consent is not required prior to administering or distributing the survey, the parent shall submit any objections to having their child participate in the survey to the building principal within five (5) days of inspecting the survey. The parent may also submit any concerns or complaints about the survey as provided under Policy 9130 and AG 9130A. [View Policy 2416](#)

For additional assessment information and educational options available to resident children please visit the [Required Notices](#) page on our district website.







CONTACT US



901 Lincoln Ave.
Tomah, WI 54660



Main Office: 608-374-7358
Activities Office: 608-374-7976
Counseling Office: 608-374-7354
Attendance Office: 608-374-7357



www.tomah.education/high-school

TOMAH 
AREA SCHOOL DISTRICT
HIGH QUALITY STUDENT LEARNING. EVERY CHILD. EVERY DAY.