

Option 2 | Build New High School

LaGrange Notes:

District-wide EC location

(2) Classrooms for Early Childhood (3K)

In-Town location for 4K & 5K

(2) Classrooms for 4K

(8) Classrooms for 5K (based on 2023 enrollment)

Current Lemonweir, LaGrange, and Miller students

Note: (2) more 4K sections are held at community partner locations

TAMS | Tomah Area Montessori School

Assume connecting (2) current classrooms to have larger space for each house

- Children's House: 4K & 5K
- E1: 1st, 2nd & 3rd
- E2: 4th, 5th, & 6th

LaGrange would have a dedicated gym, cafeteria (multi-purpose room), art classroom and music classroom

There is room to grow at LaGrange:

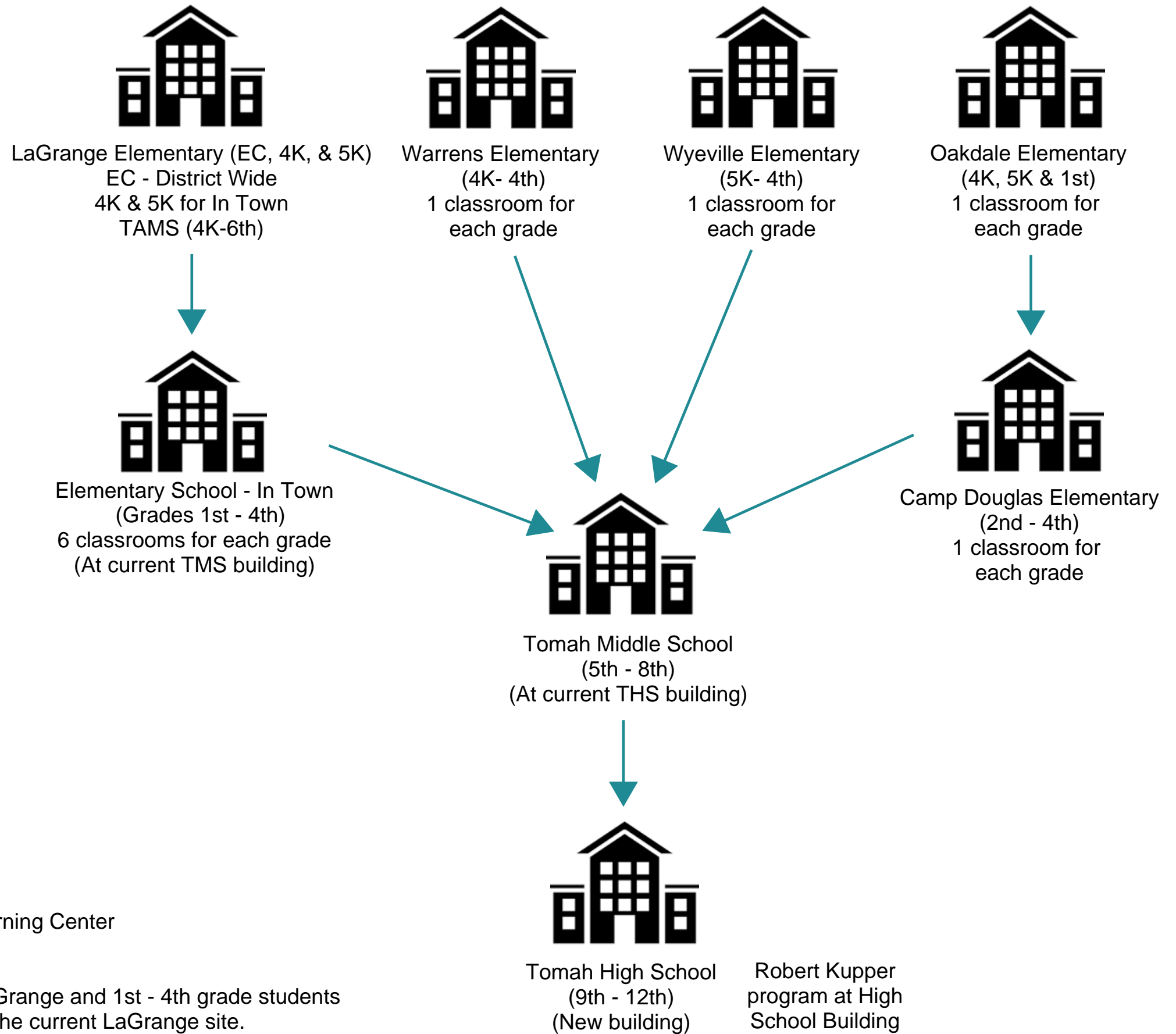
- could add another section for TAMS
- could add (2) 4K classrooms if community partners change



Lemonweir, Miller, TAMS, District Office, and Robert Kupper Learning Center

- Close and seek to sell buildings

Current Lemonweir and Miller 4K & 5K students would attend LaGrange and 1st - 4th grade students would attend the current TMS site. TAMS program would attend the current LaGrange site.

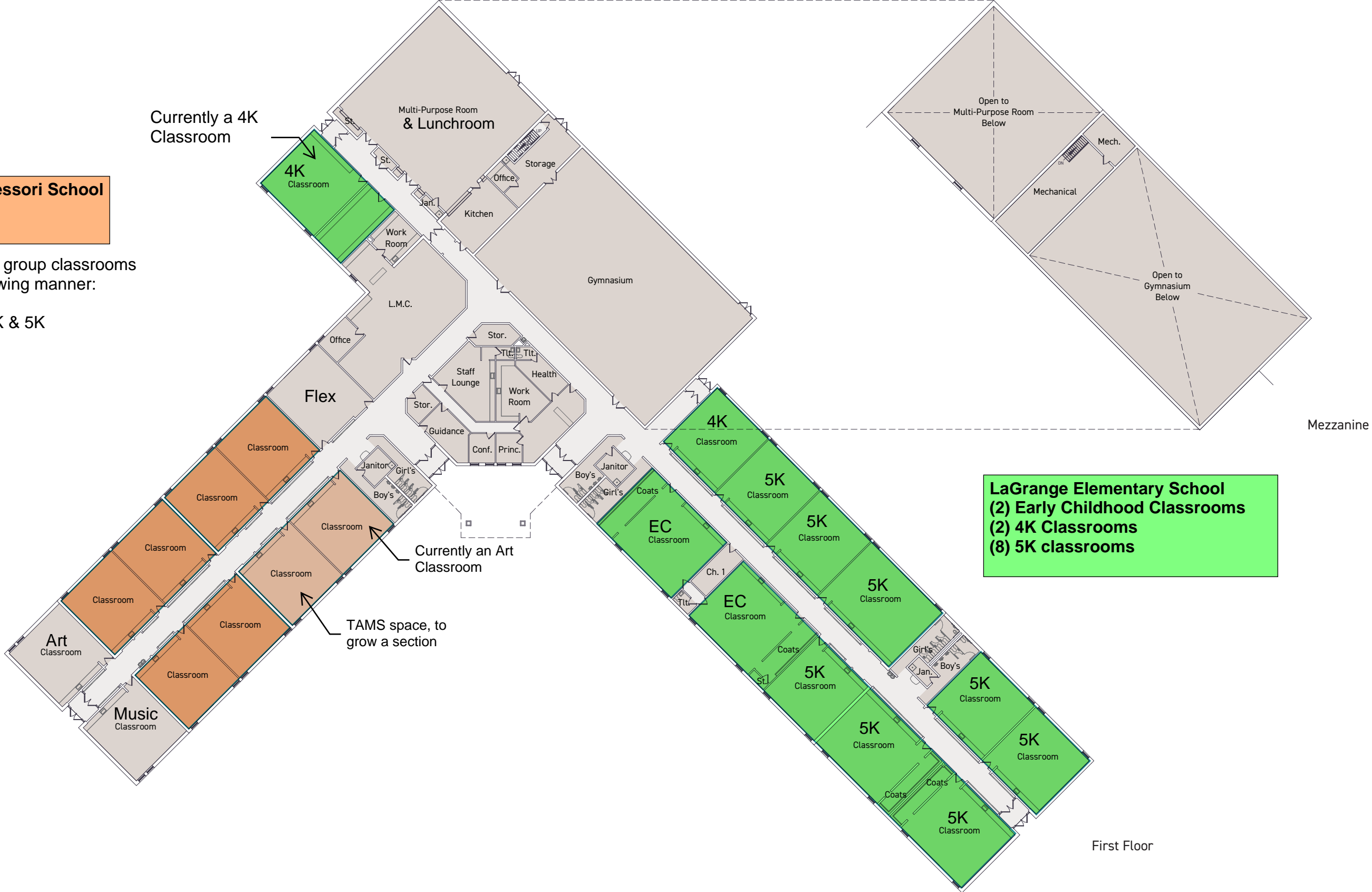


first floor & mezz. plans la grange elementary school

Tomah Area Montessori School (TAMS)

TAMS has multi-age group classrooms arranged in the following manner:

- Children's House: 4K & 5K
- E1: 1st, 2nd & 3rd
- E2: 4th, 5th, & 6th



Lower Level Floor Plan Tomah Middle School



Option 2 | Middle School becomes Elementary School, District Office, Day Care, and other District use

Elementary School (1st - 4th Grade) In Town LaGrange, Lemonweir & Miller population

District Office

Potential District Office use

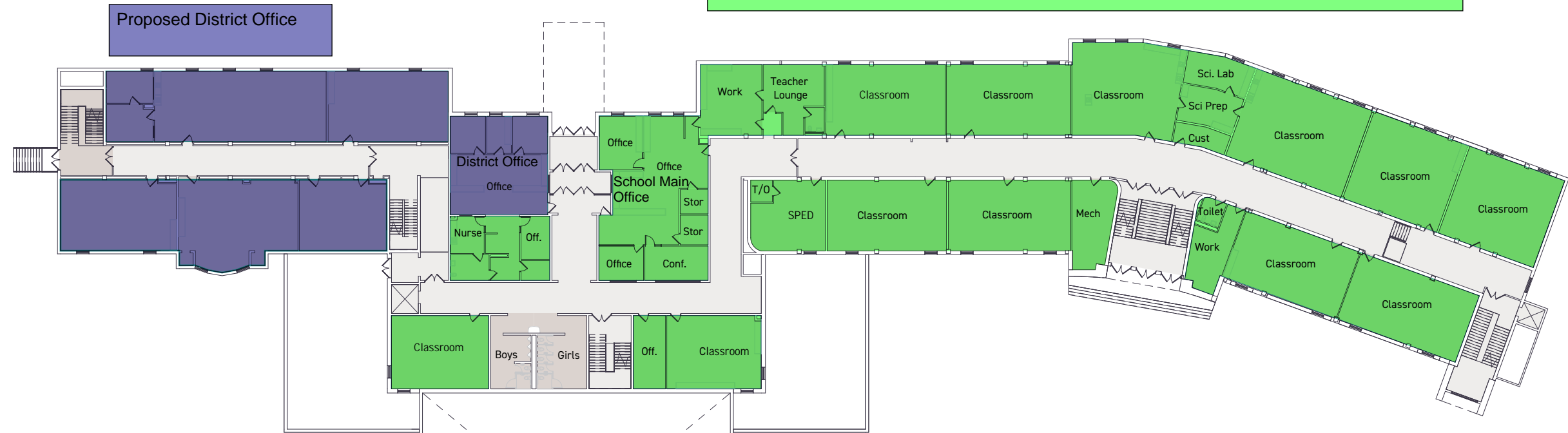
Day Care

Unassigned space

First Floor Plan Tomah Middle School

6 Section Elementary School | 1st - 4th
 (24) Classrooms | 6 classrooms per grade
 (2) Flex classrooms identified if larger classes comes through and need to add a section
 (3) Special Education classrooms

- Dedicated office/ main entrance
- Shared staff work / break
- Storage between classrooms where science was



Option 2 | Middle School becomes Elementary School, District Office, Day Care, and other District use

Elementary School (1st - 4th Grade) In Town LaGrange, Lemonweir & Miller population

- District Office
- Potential District Office use
- Day Care
- Unassigned space

2023 Enrollment	1st	2nd	3rd	4th	Total
LaGrange	64	68	57	60	249
Miller	34	47	45	47	173
Lemonweir	35	42	38	37	152
	133	157	140	144	574

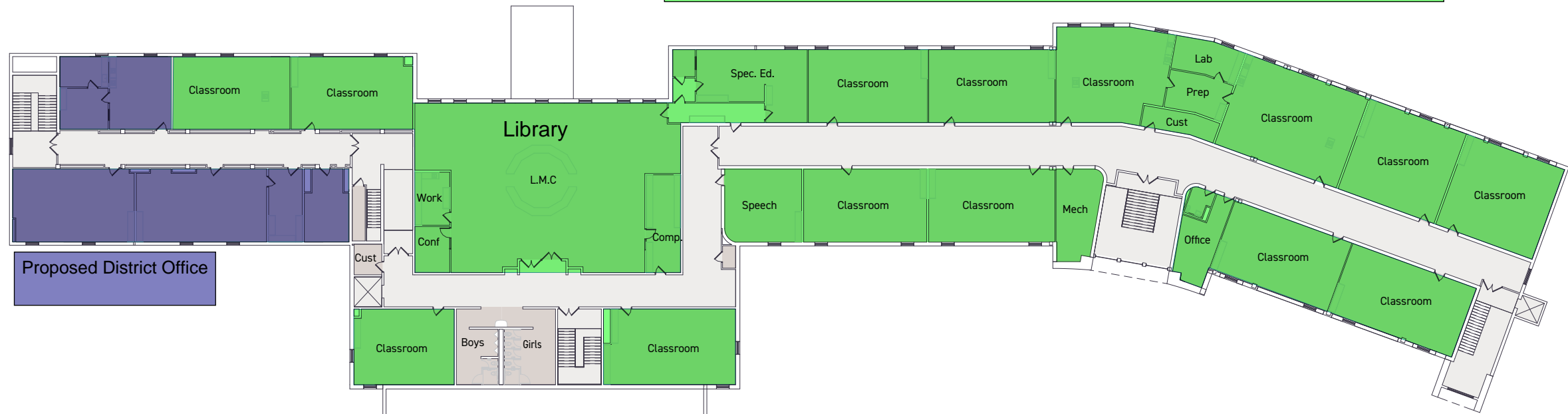
Enrollment per grade ranges 133-157 (6-7 section school)

133 students / 6 = 22 students per class
 133 students / 7 = 19 students per class
 157 students / 6 = 26 students per class
 157 students / 7 = 22 students per class

Second Floor Plan Tomah Middle School

6 Section Elementary School | 1st - 4th
 (24) Classrooms | 6 classrooms per grade
 (2) Flex classrooms identified if larger classes comes through and need to add a section
 (3) Special Education classrooms

- Dedicated office/ main entrance
- Shared staff work / break
- Storage between classrooms where science was



Option 2 | Middle School becomes Elementary School, District Office, Day Care, and other District use

Elementary School (1st - 4th Grade) In Town
 LaGrange, Lemonweir & Miller population

District Office

Potential District Office use

Day Care

Unassigned space

2023 Enrollment	1st	2nd	3rd	4th	Total
LaGrange	64	68	57	60	249
Miller	34	47	45	47	173
Lemonweir	35	42	38	37	152
	133	157	140	144	574

Enrollment per grade ranges 133-157 (6-7 section school)

133 students / 6 = 22 students per class
 133 students / 7 = 19 students per class
 157 students / 6 = 26 students per class
 157 students / 7 = 22 students per class

5-8 MIDDLE SCHOOL | Tomah High School

