

Updated School Buildings

LaGrange Notes:

District-wide EC location

(2) Classrooms for Early Childhood (3K)

In-Town location for 4K & 5K

(2) Classrooms for 4K

(8) Classrooms for 5K (based on 2023 enrollment)

Current Lemonweir, LaGrange, and Miller students

Note: (2) more 4K sections are held at community partner locations

TAMS | Tomah Area Montessori School

Assume connecting (2) current classrooms to have larger space for each house

- Children's House: 4K & 5K
- E1: 1st, 2nd & 3rd
- E2: 4th, 5th, & 6th

LaGrange would have a dedicated gym, cafeteria (multi-purpose room), art classroom and music classroom

There is room to grow at LaGrange:

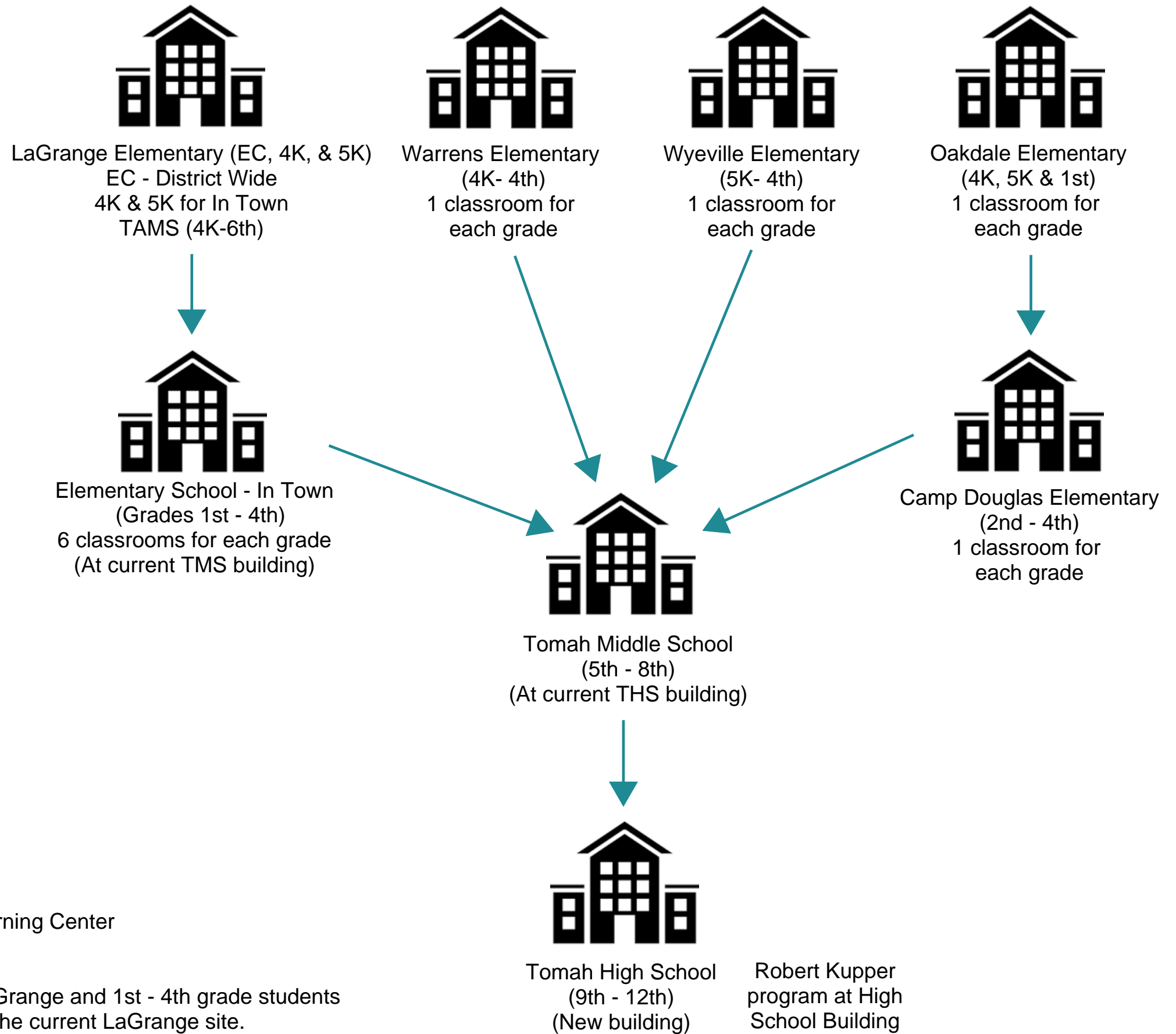
- could add another section for TAMS
- could add (2) 4K classrooms if community partners change



Lemonweir, Miller, TAMS, District Office, and Robert Kupper Learning Center

- Close and seek to sell buildings

Current Lemonweir and Miller 4K & 5K students would attend LaGrange and 1st - 4th grade students would attend the current TMS site. TAMS program would attend the current LaGrange site.



first floor & mezz. plans la grange elementary school

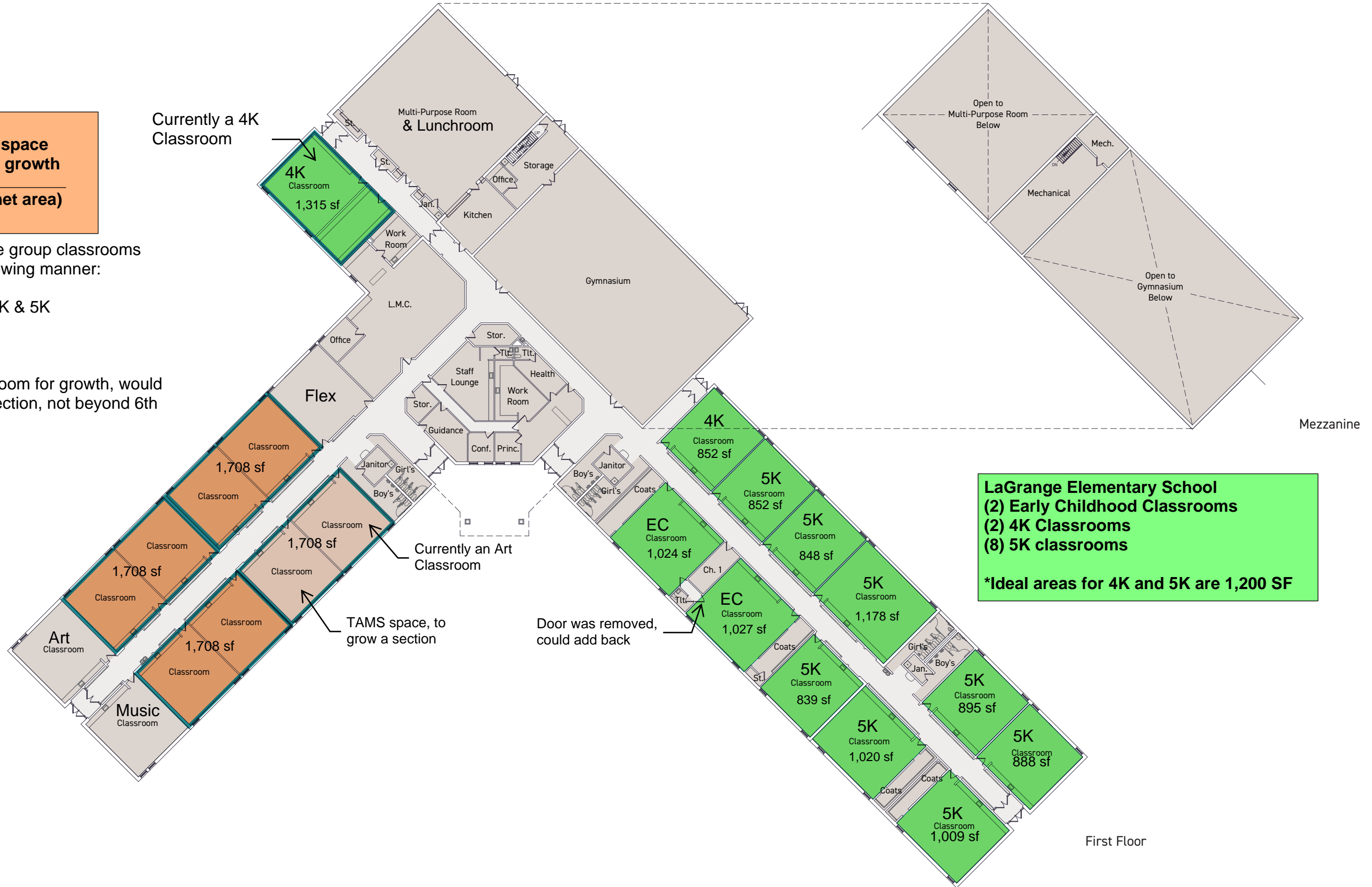
TAMS
 5,000 SF current space
 10,000 SF goal for growth

 5,124 SF shown (net area)

TAMS has multi-age group classrooms arranged in the following manner:

Children's House: 4K & 5K
 E1: 1st, 2nd & 3rd
 E2: 4th, 5th, & 6th

Showing one classroom for growth, would add an additional section, not beyond 6th grade.



LaGrange Elementary School
 (2) Early Childhood Classrooms
 (2) 4K Classrooms
 (8) 5K classrooms
 *Ideal areas for 4K and 5K are 1,200 SF

first floor & mezz. plans la grange elementary school

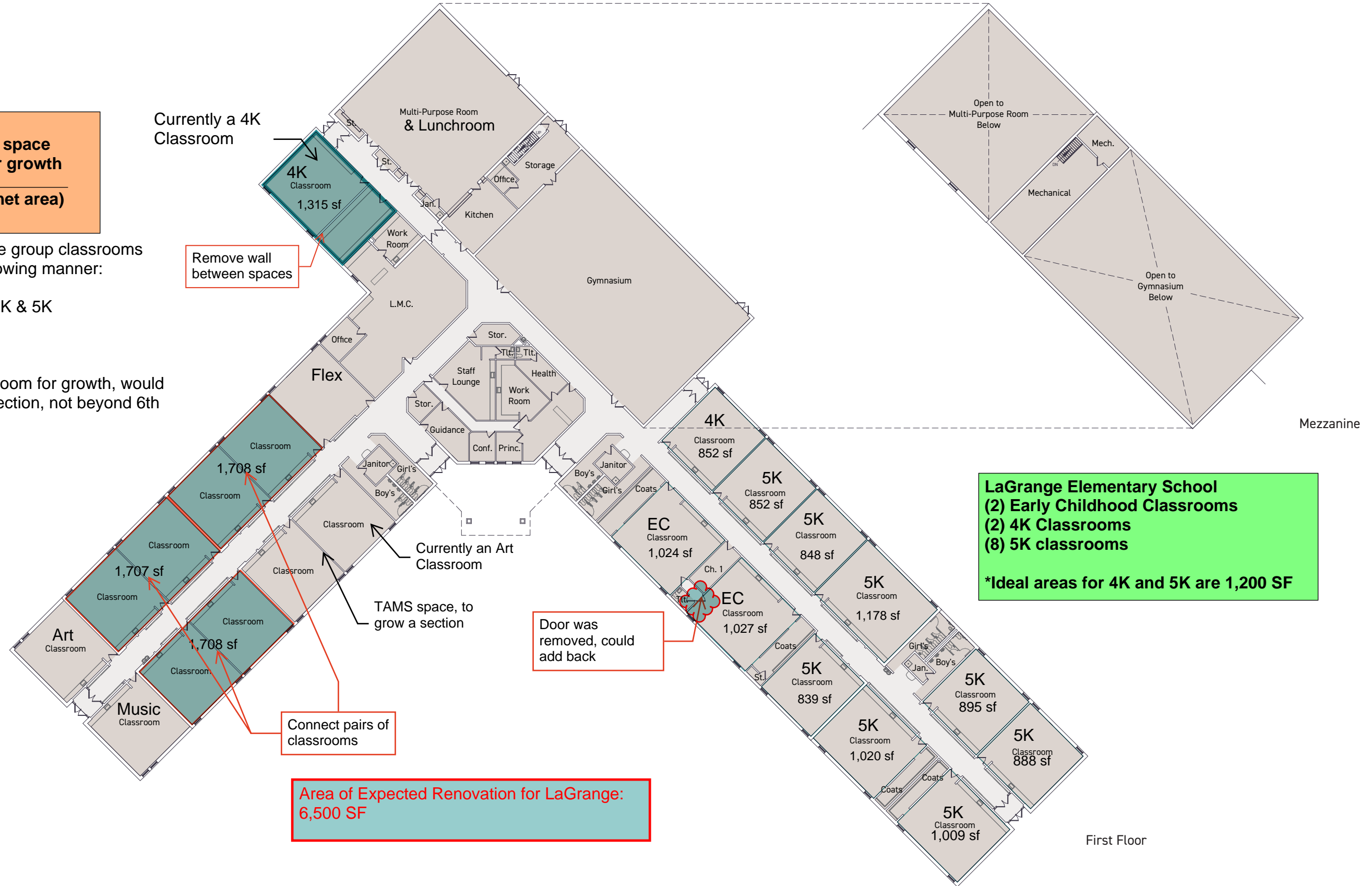
TAMS
5,000 SF current space
10,000 SF goal for growth

5,124 SF shown (net area)

TAMS has multi-age group classrooms arranged in the following manner:

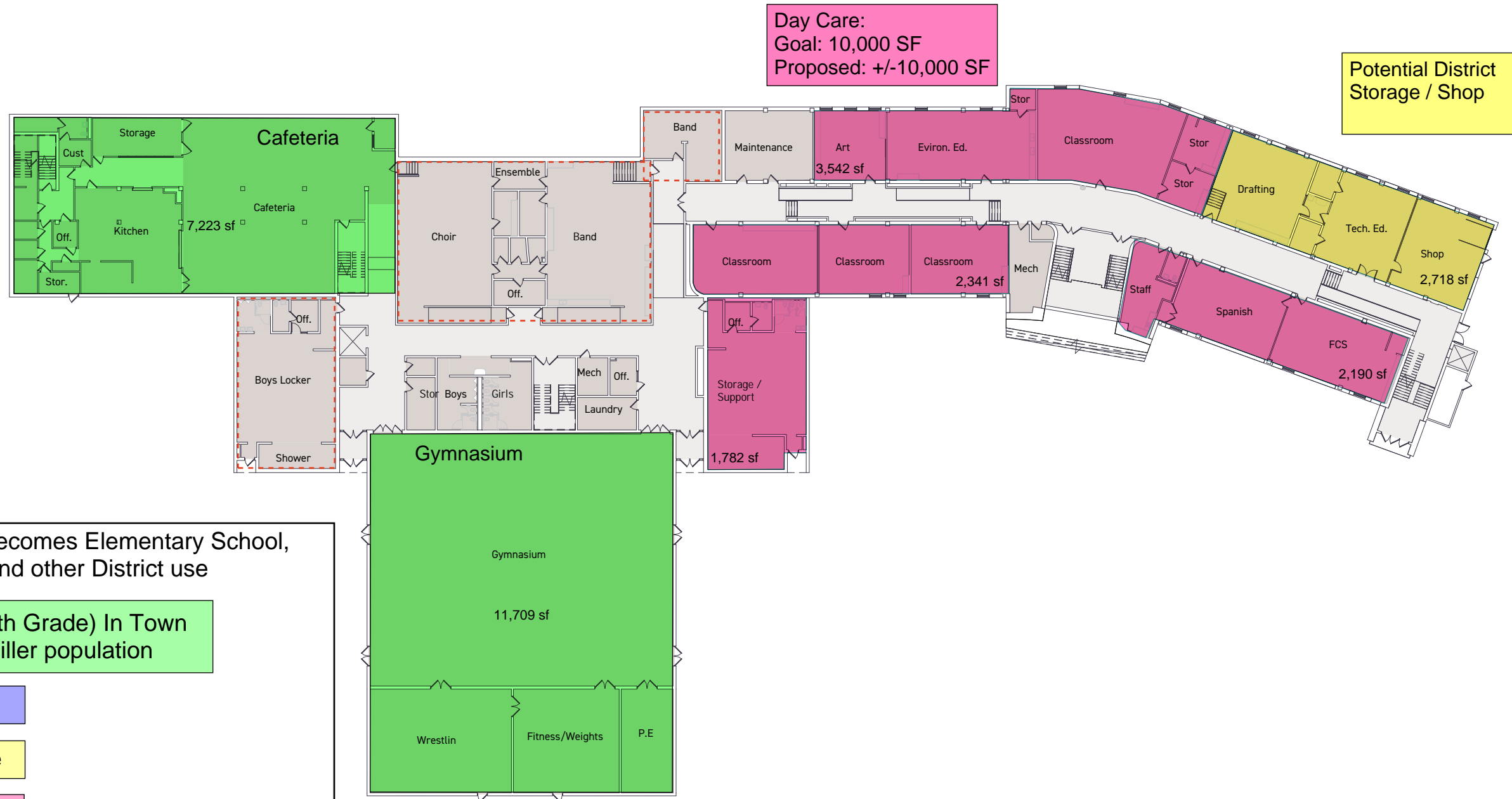
Children's House: 4K & 5K
 E1: 1st, 2nd & 3rd
 E2: 4th, 5th, & 6th

Showing one classroom for growth, would add an additional section, not beyond 6th grade.



LaGrange Elementary School
(2) Early Childhood Classrooms
(2) 4K Classrooms
(8) 5K classrooms
 *Ideal areas for 4K and 5K are 1,200 SF

Lower Level Floor Plan Tomah Middle School



Option 2 | Middle School becomes Elementary School, District Office, Day Care, and other District use

Elementary School (1st - 4th Grade) In Town LaGrange, Lemonweir & Miller population

District Office

Potential District Office use

Day Care

Unassigned space

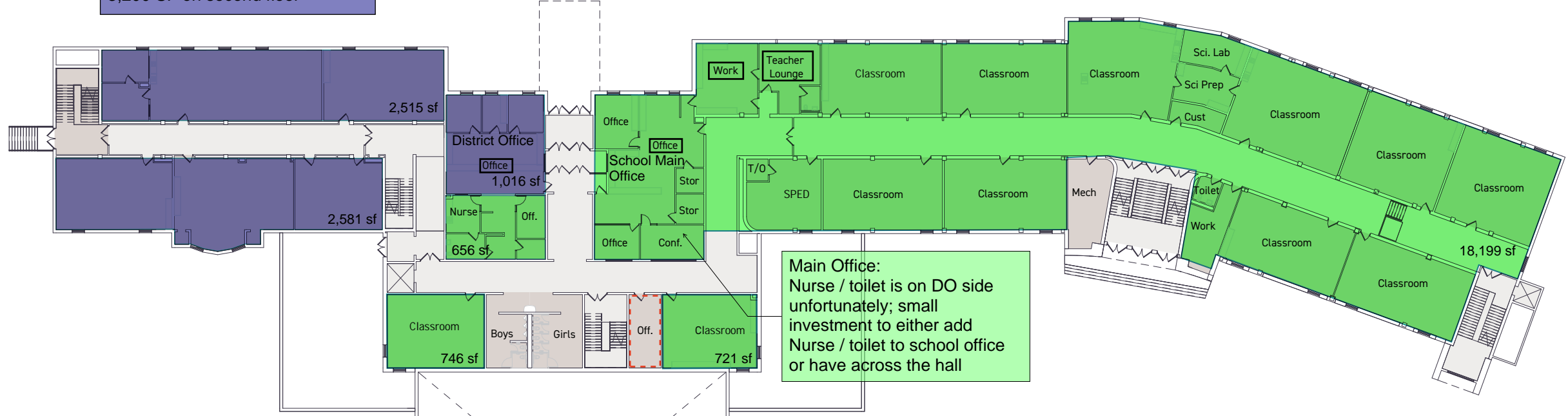
First Floor Plan Tomah Middle School

District Office
 Goal: 8,000 SF
 Proposed: 9,300 SF
 6,100 SF on first floor
 3,200 SF on second floor

6 Section Elementary School | 1st - 4th
 (24) Classrooms | 6 classrooms per grade
 (2) Flex classrooms identified if larger classes comes through and need to add a section
 (3) Special Education classrooms

- Dedicated office/ main entrance
- Shared staff work / break
- storage between classrooms where science was

Goal: 61,000 SF | 63,400 SF proposed (net, plus a few halls)
 Proposed: +/- 44,500 SF shown in green (net, plus a few halls) for office and classrooms
 18,900 SF for lower level cafeteria, kitchen, and gym/athletic space



Main Office:
 Nurse / toilet is on DO side unfortunately; small investment to either add Nurse / toilet to school office or have across the hall

Option 2 | Middle School becomes Elementary School, District Office, Day Care, and other District use

Elementary School (1st - 4th Grade) In Town
 LaGrange, Lemonweir & Miller population

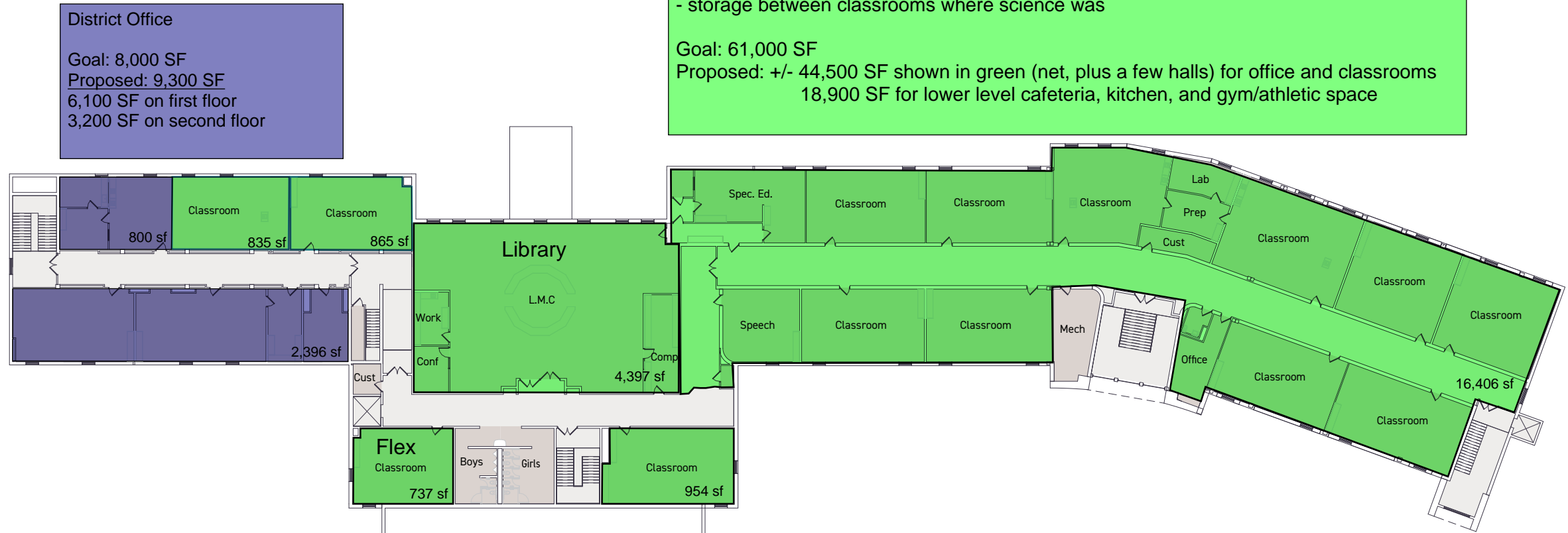
- District Office
- Potential District Office use
- Day Care
- Unassigned space

2023 Enrollment	1st	2nd	3rd	4th	Total
LaGrange	64	68	57	60	249
Miller	34	47	45	47	173
Lemonweir	35	42	38	37	152
	133	157	140	144	574

Enrollment per grade ranges 133-157 (6-7 section school)

133 students / 6 = 22 students per class
 133 students / 7 = 19 students per class
 157 students / 6 = 26 students per class
 157 students / 7 = 22 students per class

Second Floor Plan Tomah Middle School



6 Section Elementary School | 1st - 4th
 (24) Classrooms
 (2) Flex classrooms identified if larger classes comes through and need to add a section
 (3) Special Education classrooms

- Dedicated office/ main entrance
- Shared staff work / break
- storage between classrooms where science was

Goal: 61,000 SF
 Proposed: +/- 44,500 SF shown in green (net, plus a few halls) for office and classrooms
 18,900 SF for lower level cafeteria, kitchen, and gym/athletic space

District Office
 Goal: 8,000 SF
 Proposed: 9,300 SF
 6,100 SF on first floor
 3,200 SF on second floor

Option 2 | Middle School becomes Elementary School, District Office, Day Care, and other District use

Elementary School (1st - 4th Grade) In Town
 LaGrange, Lemonweir & Miller population

District Office

Potential District Office use

Day Care

Unassigned space

2023 Enrollment	1st	2nd	3rd	4th	Total
LaGrange	64	68	57	60	249
Miller	34	47	45	47	173
Lemonweir	35	42	38	37	152
	133	157	140	144	574

Enrollment per grade ranges 133-157 (6-7 section school)

133 students / 6 = 22 students per class
 133 students / 7 = 19 students per class
 157 students / 6 = 26 students per class
 157 students / 7 = 22 students per class

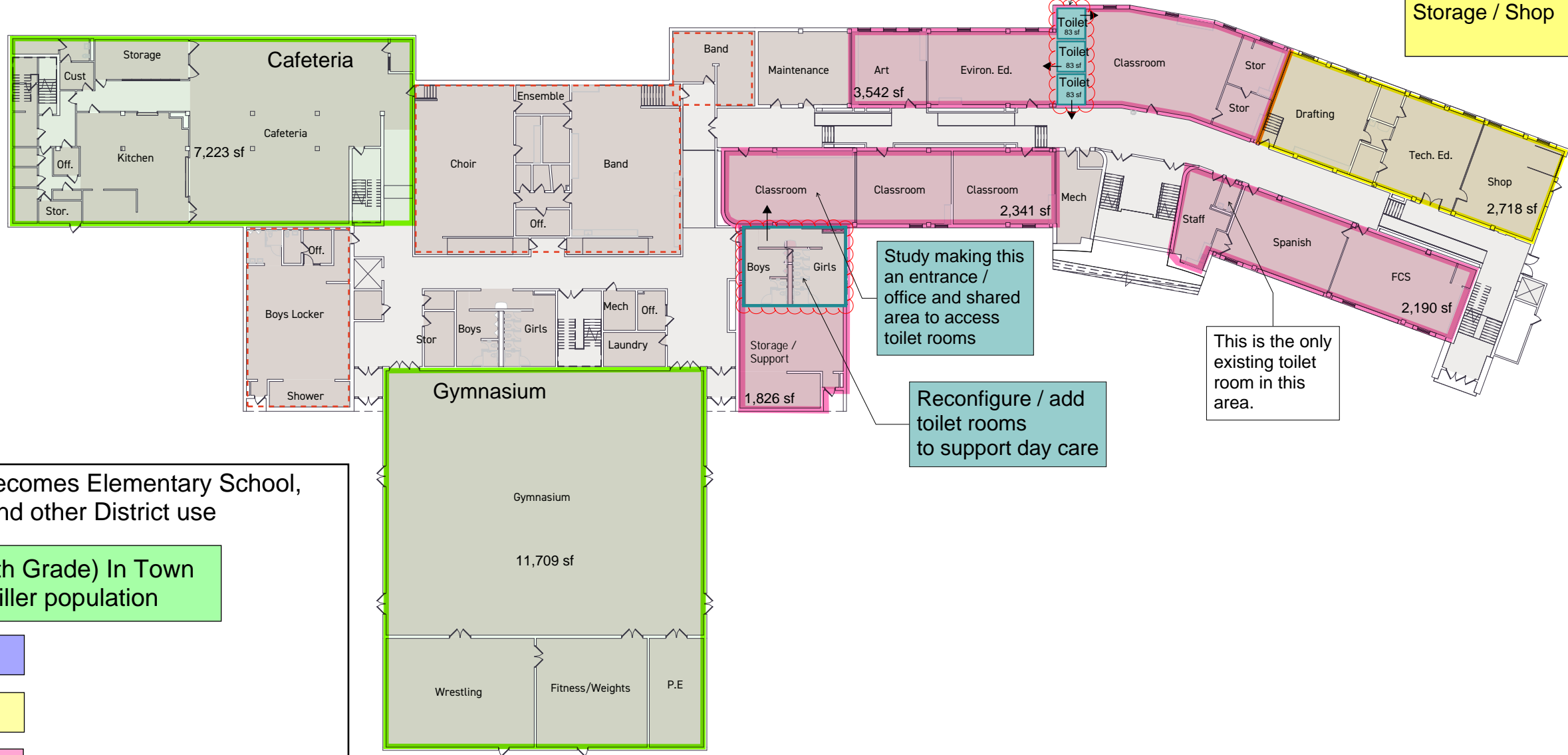
Lower Level Floor Plan Tomah Middle School

Area of Expected Renovation for Day Care
 - renovation to add toilet rooms
 - remove classrooms items
 25% of area (2,500 SF of renovation)

Day Care:
 Goal: 10,000 SF
 Proposed: +/-10,000 SF

Plumbing in this area - likely need to add toilets

Potential District Storage / Shop



Option 2 | Middle School becomes Elementary School, District Office, Day Care, and other District use

- Elementary School (1st - 4th Grade) In Town LaGrange, Lemonweir & Miller population
- District Office
- Potential District Office use
- Day Care
- Unassigned space

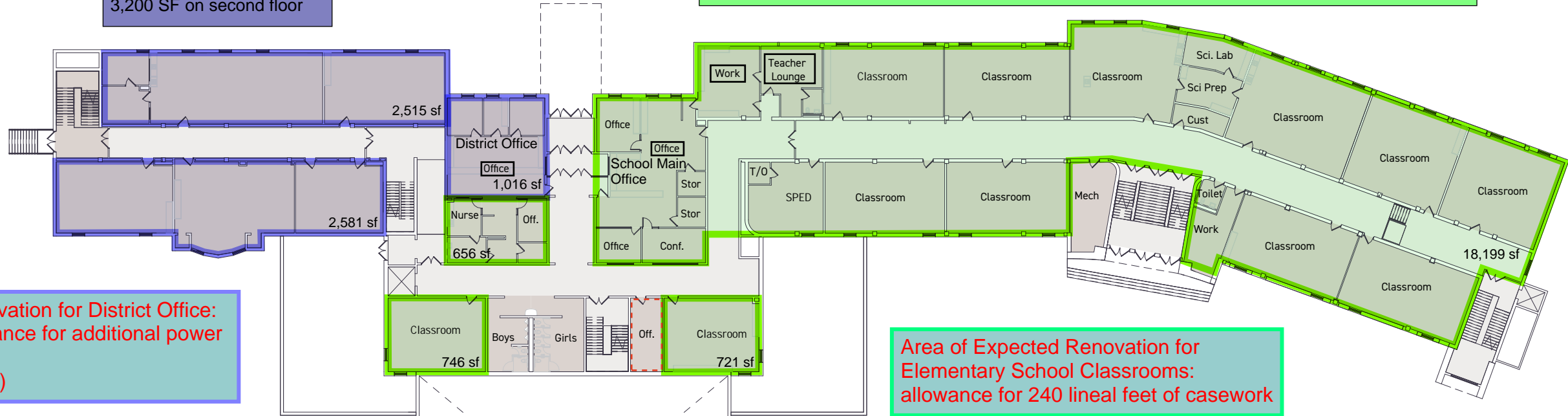
First Floor Plan Tomah Middle School

6 Section Elementary School | 1st - 4th
 (24) Classrooms
 (2) Flex classrooms identified if larger classes comes through and need to add a section
 (3) Special Education classrooms

- Dedicated office/ main entrance
- Shared staff work / break
- storage between classrooms where science was

Goal: 61,000 SF | 63,400 SF proposed (net, plus a few halls)
 Proposed: +/- 44,500 SF shown in green (net, plus a few halls) for office and classrooms
 18,900 SF for lower level cafeteria, kitchen, and gym/athletic space

District Office
 Goal: 8,000 SF
 Proposed: 9,300 SF
 6,100 SF on first floor
 3,200 SF on second floor



Area of Expected Renovation for District Office:
 25% of area plus allowance for additional power and data
 (2,335 SF of renovation)

Area of Expected Renovation for Elementary School Classrooms:
 allowance for 240 lineal feet of casework

Option 2 | Middle School becomes Elementary School, District Office, Day Care, and other District use

Elementary School (1st - 4th Grade) In Town
 LaGrange, Lemonweir & Miller population

- District Office
- Potential District Office use
- Day Care
- Unassigned space

2023 Enrollment	1st	2nd	3rd	4th	Total
LaGrange	64	68	57	60	249
Miller	34	47	45	47	173
Lemonweir	35	42	38	37	152
	133	157	140	144	574

Enrollment per grade ranges 133-157 (6-7 section school)

133 students / 6 = 22 students per class
 133 students / 7 = 19 students per class
 157 students / 6 = 26 students per class
 157 students / 7 = 22 students per class

Second Floor Plan Tomah Middle School

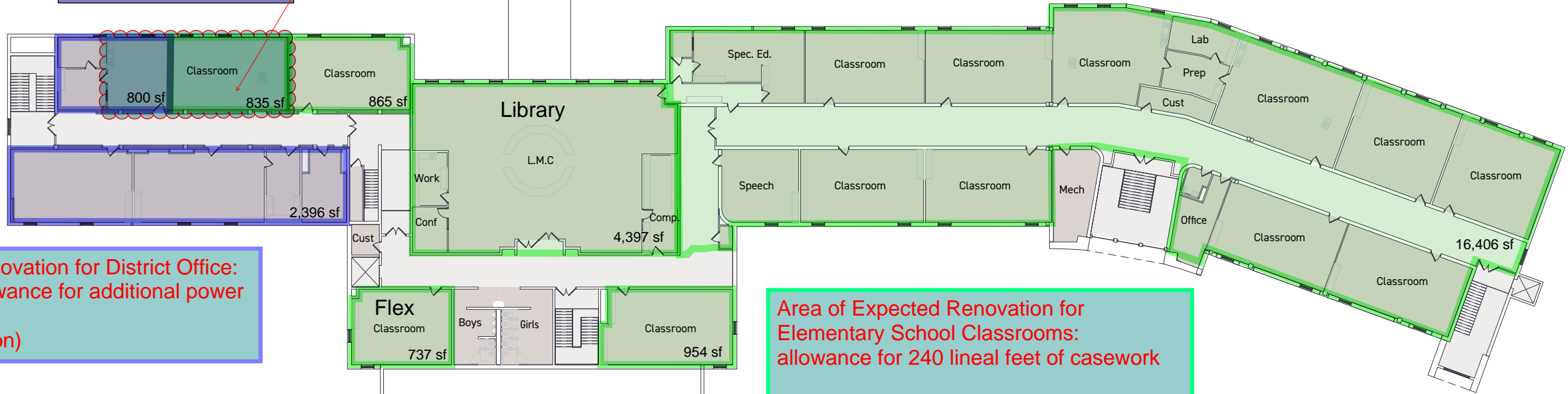
6 Section Elementary School | 1st - 4th
 (24) Classrooms
 (2) Flex classrooms identified if larger classes comes through and need to add a section
 (3) Special Education classrooms

- Dedicated office/ main entrance
- Shared staff work / break
- storage between classrooms where science was

Goal: 61,000 SF
 Proposed: +/- 44,500 SF shown in green (net, plus a few halls) for office and classrooms
 18,900 SF for lower level cafeteria, kitchen, and gym/athletic space

District Office
 Goal: 8,000 SF
 Proposed: 9,300 SF
 6,100 SF on first floor
 3,200 SF on second floor

Divide space to make a classroom (1635 SF)



Area of Expected Renovation for District Office:
 25% of area plus allowance for additional power and data
 (2,335 SF of renovation)

Area of Expected Renovation for Elementary School Classrooms:
 allowance for 240 lineal feet of casework

Option 2 | Middle School becomes Elementary School, District Office, Day Care, and other District use

Elementary School (1st - 4th Grade) In Town
 LaGrange, Lemonweir & Miller population

- District Office
- Potential District Office use
- Day Care
- Unassigned space

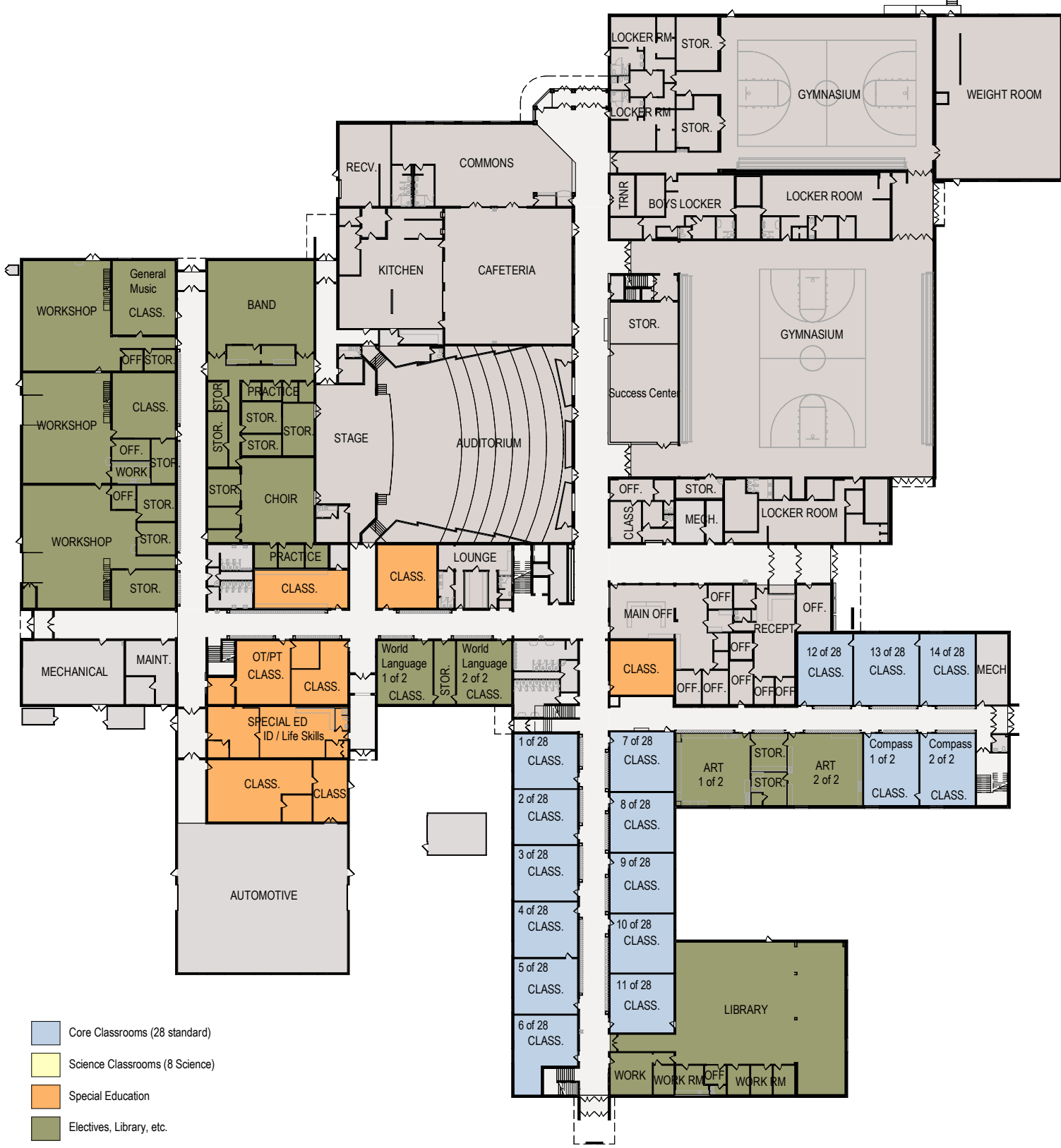
2023 Enrollment	1st	2nd	3rd	4th	Total
LaGrange	64	68	57	60	249
Miller	34	47	45	47	173
Lemonweir	35	42	38	37	152
	133	157	140	144	574

Enrollment per grade ranges 133-157 (6-7 section school)

133 students / 6 = 22 students per class
 133 students / 7 = 19 students per class
 157 students / 6 = 26 students per class
 157 students / 7 = 22 students per class

5-8 MIDDLE SCHOOL | Tomah High School

Minimal renovation expected, provide allowance for signage and minor finish improvements



- Core Classrooms (28 standard)
- Science Classrooms (8 Science)
- Special Education
- Electives, Library, etc.



- Core Classrooms (28 standard)
- Science Classrooms (8 Science)
- Special Education
- Electives, Library, etc.