

# **Tomah Area School District**

Enrollment Projection  
2009/10

## **Information Management Systems**

*6237 Arroyo Vista  
Rockford MI 49341  
(616)874-8963 (Fax & Phone)*

[WWW.ENROLLPRO.COM](http://WWW.ENROLLPRO.COM)

# Tomah Area School District

## TABLE OF CONTENTS

Projection Interpretation Guide	I
Table of Area Births	1
Actual Enrollment	2
Projected Enrollment using Method 1	3
Enrollment Graphs - Method 1	6
Projected Enrollment using Method 2	10
Enrollment Graphs - Method 2	13
Projected Enrollment using Method 3	17
Enrollment Graphs - Method 3	20
Cross - Method Graphs	24
Projected Teacher/Pupil Ratios - 1/22 to 1/32	28
Accuracy Table	34

# INFORMATION MANAGEMENT SYSTEMS

## *Enrollment Projection Interpretation Guide*

Information Management Systems has gone to great lengths to make our enrollment projection report as easy to understand as possible. However, being a primarily statistical report, it does require a certain amount of analysis. This guide is designed to assist you in that analysis. The entire enrollment projection report is explained page by page to help you understand the meaning and significance of each number.

We use three variations of the Cohort Survival Method to project enrollments. This method analyzes the survival ratios for your students and then projects those ratios into the future. The survival ratio compares how many students are in a particular grade this year against how many students were in the preceding grade the previous year. For example, if there are 100 first graders in 2000-01 and 113 second graders in 2001-02 then the survival ratio for that 2nd grade class is 113%. The manner in which each of the projection methods use the survival ratios is described below.

All of the students listed in grades K through 12 are projected in this fashion. Any grades listed in the report other than K-12, such as PreK, Special Ed, or Ungraded, are projected by looking at the survival trends within that grade, rather than the trend from the preceding grade. The unevenness of grade progression for these students prohibits the standard technique.

### Page 1: County Births

This table shows the number of resident births for your district's county for the past eleven years. These numbers, obtained from your state's health department, are used to project what proportion of children born in your county become students at your schools. Because the department of health cannot compile birth statistics for a particular year until at least the middle of the next year, the current year's birth rate is an estimate. This number is based upon past births and national and local trends in the birth rate.

### Table 1: Actual Enrollments

This may be the most important table in the projection package, as it shows the past enrollment upon which the rest of your report is based. The table has your district's enrollment for the past six years listed by grade. The number under the enrollment figure is the survival ratio for that grade in that year. Numbers above 100 (in blue) indicate an increase in enrollment from the previous grade/year, while numbers below 100 (in red) indicate a loss of enrollment.

When checking these numbers, be alert for extremely large variations in the ratios because they serve as indicators for trends in your district's enrollment, or errors in the enrollment numbers. The summary table at the bottom of this page, and most of the other pages, simply aggregates the table above it into groups corresponding with your district's grade/building configuration.

## Projection Method 1

Projection method 1 uses the survival ratios for the past five years in a particular grade. It arrives at a mean value to use in projecting how many students in the previous grade the prior year will become students in that grade that year. This method is the most accurate for school districts that have not experienced major impacts on their district in recent years. The closing or opening of a private school, the addition of a preschool program, or re-zoning of your district are a few of the occurrences that may have affected your past enrollment, and in turn, your future enrollment projections. To find out which of the three projection methods might be most accurate for your schools, please refer to the accuracy table on the last page of this report.

### Table 2: Projected Enrollment by Method 1

This table predicts what your enrollment will be up to five years into the future, grade by grade. The blue figures under the enrollment numbers are the multipliers that are used to represent the survival ratio that particular grade has shown in the past. Numbers far from 100 indicate that either a loss or a gain of enrollment has occurred, and care should be taken to determine what the cause of this fluctuation might be.

### Table 3: Comparison by Method 1

This table summarizes the past two pages by showing past, present, and projected future enrollment. The small numbers indicate the percentage difference between that year's enrollment and the current year's, blue for enrollment above the current year's, and red when below. The key numbers on this table are the percent changes for the grade configuration summaries for the future. These indicate the extent, as a percentage of this year's enrollment, to which your district will either lose (red) or gain (blue) enrollment.

### Table 4: 10 Year Projections by Method 1

This table shows what enrollment will look like ten years into the future. You will notice that, starting six years into the future, some grades are omitted from the report. This is because birth rates, which are the base from which the projections work, are very difficult to project with any accuracy. Without birth data, Kindergarten enrollment becomes impossible to project six years from now, and each higher grade falls out the following year.

Although this gives only a partial glimpse of your enrollment ten years from now, we feel it is better to exclude some information than to possibly be misleading with inaccurate data.

### Enrollment Graphs as projected by Method 1

The first set of charts, one for each grade grouping, depicts the information from the past three tables in graphic form. Each graph deals with one of your district's building levels. The last chart is usually reserved for total district enrollment. The upper chart on each page tracks your enrollment level, while the lower tracks the percentage difference between your current enrollment and the enrollment in that year.

## Projection Method 2

The second method used to project the enrollment of your school district uses the survival ratio for only the current year to project enrollment. This method may be most accurate for your school if it has recently experienced a change in its enrollment trends. The closing of a private school in your district last year will affect your enrollment this year, and in years to come. Under these and similar circumstances, method 2 will have the best predictive power. Please refer to Table 17 on the last page of the report to determine which method was best able to predict this year's enrollment.

### Table 5: Projected Enrollment by Method 2

This table predicts what your enrollment will be up to five years into the future, grade by grade. The blue figures under the enrollment numbers are the multipliers that are used to represent the survival ratio that particular grade has shown in the past. Numbers far from 100 indicate that either a loss or a gain has occurred, and care should be taken to determine what the cause of this fluctuation might be.

### Table 6: Comparison by Method 2

This table summarizes the previous page with your historical information by showing past, present, and projected future enrollment. The small numbers indicate the percentage difference between that year's enrollment and the current year's. The key numbers on this table are the percent changes for the summary groups for the future. These indicate the extent, as a percentage of this year's enrollment, to which your district will either lose (red) or gain (blue) enrollment.

### Table 7: 10 Year Projections by Method 2

This table shows what enrollment will look like ten years into the future. You will notice that, starting six years into the future, some grades are omitted from the report. This is because birth rates, which are the base from which the projections work, are very difficult to project with any accuracy. Without birth data, Kindergarten enrollment becomes impossible to project six years from now, and each higher grade falls out the following year.

Although this gives only a partial glimpse of your enrollment ten years from now, we feel it is better to exclude some information than to possibly be misleading with inaccurate data.

### Enrollment Graphs as projected by Method 2

The second set of graphs depicts the information from the past three tables in graphic form. Each graph deals with one of your district's building levels. The last chart is usually reserved for total district enrollment. The upper chart on each page tracks your enrollment level, while the lower tracks the percentage difference between your current enrollment and the enrollment in that year.

### **Projection method 3**

This method uses the average arrived at by method 1 and combines that with the one year ratio used by method 2. The resulting ratio emphasizes current trends in your enrollment while tempering that with the trends of the past. This method will best suit districts that have had fluctuations in their enrollment due to temporary occurrences, but do not expect those occurrences to overwhelmingly impact future enrollment. As with the other methods, Table 17 shows which method has the best predictive power for your particular situation.

#### Table 8: Projected Enrollment by Method 3

This table predicts what your enrollment will be up to five years into the future, grade by grade. The blue figures under the enrollment numbers are the multipliers that are used to represent the survival ratio that particular grade has shown in the past. Numbers far from 100 indicate that either a loss or a gain has occurred, and care should be taken to determine what the cause of this fluctuation might be.

#### Table 9: Comparison by Method 3

This table summarizes the previous page with your historical information by showing past, present, and projected future enrollment. The small numbers indicate the percentage difference between that year's enrollment and the current year's. The key numbers on this table are the percent changes for the summary groups for the future. These indicate the extent, as a percentage of this year's enrollment, to which your district will either lose (red numbers) or gain (blue numbers) enrollment.

#### Table 10: 10 Year Projections by Method 3

This table shows what enrollment will look like ten years into the future. You will notice that, starting six years into the future, some grades are omitted from the report. This is because birth rates, which are the base from which the projections work, are very difficult to project with any accuracy. Without birth data, Kindergarten enrollment becomes impossible to project six years from now, and each higher grade falls out the next year.

Although this gives only a partial glimpse of your enrollment ten years from now, we feel it is better to exclude some information than to possibly be misleading with inaccurate data.

#### Enrollment graphs as projected by Method 3

The third method graphs depict the information from the past three tables in graphic form. Each graph deals with one of your district's building levels. The last chart is usually reserved for total district enrollment. The upper chart on each page tracks your enrollment level, while the lower tracks the percentage difference between your current enrollment and the enrollment in that year.

### Cross – Method Charts

These charts (one for each grade grouping) look at your projected enrollment across the three projection methods. Each chart begins with your current enrollment with a separate line for each method tracing your projection out five years into the future. When all three lines stay close together, your projected enrollment does not significantly vary across the different projection methods.

However, when the three lines diverge, the three methods are projecting relatively different enrollments. Care should be taken in choosing the correct method on which to rely.

### Tables 11-16: Teacher Projections

These six tables use projection Method 1, as the most conservative of the three methods, to forecast teacher needs for the next ten years. The tables are arranged according to selected Teacher: Pupil ratios (1:22 thru 1:32). As with the ten year enrollment projections, lower grades fall out of the system in later years due to projection limitations.

### Table 17: Method Accuracy

This table is used to show which of the three projections methods has the best predictive power for your district. This is done by creating a projection of THIS YEAR'S enrollment using past data and then comparing it to this year's actual enrollment. The method showing the smallest total (K-12) error should have the best ability to predict what your future enrollment will be.

As in other tables, projections below the current year's level are shown in red, and those above are shown in blue.

## Births for Monroe County

<u>YEAR</u>	<u>BIRTHS</u>
1999	510
2000	602
2001	593
2002	559
2003	624
2004	587
2005	615
2006	633
2007	666
2008	691
2009	706



# Tomah Area School District

## Table 1 - Actual Enrollments

GRADE	2004-05	2005-06	2006-07	2007-08	2008-09	2009-10
<b>K</b>	209	208 <i>34.55</i>	229 <i>38.62</i>	178 <i>31.84</i>	195 <i>31.25</i>	235 <i>40.03</i>
<b>1</b>	177	214 <i>102.39</i>	211 <i>101.44</i>	231 <i>100.87</i>	181 <i>101.69</i>	202 <i>103.59</i>
<b>2</b>	188	189 <i>106.78</i>	217 <i>101.40</i>	218 <i>103.32</i>	233 <i>100.87</i>	189 <i>104.42</i>
<b>3</b>	214	195 <i>103.72</i>	192 <i>101.59</i>	222 <i>102.30</i>	222 <i>101.83</i>	228 <i>97.85</i>
<b>4</b>	203	220 <i>102.80</i>	194 <i>99.49</i>	197 <i>102.60</i>	233 <i>104.95</i>	226 <i>101.80</i>
<b>5</b>	215	214 <i>105.42</i>	220 <i>100.00</i>	202 <i>104.12</i>	193 <i>97.97</i>	226 <i>97.00</i>
<b>6</b>	226	214 <i>99.53</i>	225 <i>105.14</i>	243 <i>110.45</i>	217 <i>107.43</i>	191 <i>98.96</i>
<b>7</b>	234	229 <i>101.33</i>	211 <i>98.60</i>	220 <i>97.78</i>	248 <i>102.06</i>	216 <i>99.54</i>
<b>8</b>	201	248 <i>105.98</i>	222 <i>96.94</i>	223 <i>105.69</i>	222 <i>100.91</i>	247 <i>99.60</i>
<b>9</b>	293	248 <i>123.38</i>	288 <i>116.13</i>	266 <i>119.82</i>	242 <i>108.52</i>	246 <i>110.81</i>
<b>10</b>	272	288 <i>98.29</i>	240 <i>96.77</i>	285 <i>98.96</i>	272 <i>102.26</i>	238 <i>98.35</i>
<b>11</b>	251	275 <i>101.10</i>	280 <i>97.22</i>	237 <i>98.75</i>	265 <i>92.98</i>	258 <i>94.85</i>
<b>12</b>	258	249 <i>99.20</i>	295 <i>107.27</i>	288 <i>102.86</i>	230 <i>97.05</i>	274 <i>103.40</i>

<b>K-5</b>	1,206	1,240	1,263	1,248	1,257	1,306
<b>6-8</b>	661	691	658	686	687	654
<b>9-12</b>	1,074	1,060	1,103	1,076	1,009	1,016
<b>K-12</b>	2,941	2,991	3,024	3,010	2,953	2,976

# Tomah Area School District

Table 2 - Enrollment Projected Five Years  
Method 1

GRADE	2010-11	2011-12	2012-13	2013-14	2014-15
<b>K</b>	217 <i>35.26</i>	223 <i>35.26</i>	235 <i>35.26</i>	244 <i>35.26</i>	249 <i>35.26</i>
<b>1</b>	240 <i>102.00</i>	221 <i>102.00</i>	227 <i>102.00</i>	240 <i>102.00</i>	249 <i>102.00</i>
<b>2</b>	209 <i>103.36</i>	248 <i>103.36</i>	228 <i>103.36</i>	235 <i>103.36</i>	248 <i>103.36</i>
<b>3</b>	192 <i>101.46</i>	212 <i>101.46</i>	252 <i>101.46</i>	231 <i>101.46</i>	238 <i>101.46</i>
<b>4</b>	233 <i>102.33</i>	196 <i>102.33</i>	217 <i>102.33</i>	258 <i>102.33</i>	236 <i>102.33</i>
<b>5</b>	228 <i>100.90</i>	235 <i>100.90</i>	198 <i>100.90</i>	219 <i>100.90</i>	260 <i>100.90</i>
<b>6</b>	236 <i>104.30</i>	238 <i>104.30</i>	245 <i>104.30</i>	207 <i>104.30</i>	228 <i>104.30</i>
<b>7</b>	191 <i>99.86</i>	236 <i>99.86</i>	238 <i>99.86</i>	245 <i>99.86</i>	207 <i>99.86</i>
<b>8</b>	220 <i>101.82</i>	194 <i>101.82</i>	240 <i>101.82</i>	242 <i>101.82</i>	249 <i>101.82</i>
<b>9</b>	286 <i>115.73</i>	255 <i>115.73</i>	225 <i>115.73</i>	278 <i>115.73</i>	280 <i>115.73</i>
<b>10</b>	243 <i>98.93</i>	283 <i>98.93</i>	252 <i>98.93</i>	223 <i>98.93</i>	275 <i>98.93</i>
<b>11</b>	231 <i>96.98</i>	236 <i>96.98</i>	274 <i>96.98</i>	244 <i>96.98</i>	216 <i>96.98</i>
<b>12</b>	263 <i>101.96</i>	236 <i>101.96</i>	241 <i>101.96</i>	279 <i>101.96</i>	249 <i>101.96</i>

<b>K-5</b>	1,319	1,335	1,357	1,427	1,480
<b>6-8</b>	647	668	723	694	684
<b>9-12</b>	1,023	1,010	992	1,024	1,020
<b>K-12</b>	2,989	3,013	3,072	3,145	3,184

# Tomah Area School District

## Table 3 - Comparison of Past and Projected Enrollments Method 1

GRADE	2004-05	2005-06	2006-07	2007-08	2008-09	2009-10	2010-11	2011-12	2012-13	2013-14	2014-15
<b>K</b>	209 -11.06%	208 -11.49%	229 -2.55%	178 -24.26%	195 -17.02%	235 +0.00%	217 -7.66%	223 -5.11%	235 +0.00%	244 +3.83%	249 +5.96%
<b>1</b>	177 -12.38%	214 +5.94%	211 +4.46%	231 +14.36%	181 -10.40%	202 +0.00%	240 +18.81%	221 +9.41%	227 +12.38%	240 +18.81%	249 +23.27%
<b>2</b>	188 -0.53%	189 +0.00%	217 +14.81%	218 +15.34%	233 +23.28%	189 +0.00%	209 +10.58%	248 +31.22%	228 +20.63%	235 +24.34%	248 +31.22%
<b>3</b>	214 -6.14%	195 -14.47%	192 -15.79%	222 -2.63%	222 -2.63%	228 +0.00%	192 -15.79%	212 -7.02%	252 +10.53%	231 +1.32%	238 +4.39%
<b>4</b>	203 -10.18%	220 -2.65%	194 -14.16%	197 -12.83%	233 +3.10%	226 +0.00%	233 +3.10%	196 -13.27%	217 -3.98%	258 +14.16%	236 +4.42%
<b>5</b>	215 -4.87%	214 -5.31%	220 -2.65%	202 -10.62%	193 -14.60%	226 +0.00%	228 +0.88%	235 +3.98%	198 -12.39%	219 -3.10%	260 +15.04%
<b>6</b>	226 +18.32%	214 +12.04%	225 +17.80%	243 +27.23%	217 +13.61%	191 +0.00%	236 +23.56%	238 +24.61%	245 +28.27%	207 +8.38%	228 +19.37%
<b>7</b>	234 +8.33%	229 +6.02%	211 -2.31%	220 +1.85%	248 +14.81%	216 +0.00%	191 -11.57%	236 +9.26%	238 +10.19%	245 +13.43%	207 -4.17%
<b>8</b>	201 -18.62%	248 +0.40%	222 -10.12%	223 -9.72%	222 -10.12%	247 +0.00%	220 -10.93%	194 -21.46%	240 -2.83%	242 -2.02%	249 +0.81%
<b>9</b>	293 +19.11%	248 +0.81%	288 +17.07%	266 +8.13%	242 -1.63%	246 +0.00%	286 +16.26%	255 +3.66%	225 -8.54%	278 +13.01%	280 +13.82%
<b>10</b>	272 +14.29%	288 +21.01%	240 +0.84%	285 +19.75%	272 +14.29%	238 +0.00%	243 +2.10%	283 +18.91%	252 +5.88%	223 -6.30%	275 +15.55%
<b>11</b>	251 -2.71%	275 +6.59%	280 +8.53%	237 -8.14%	265 +2.71%	258 +0.00%	231 -10.47%	236 -8.53%	274 +6.20%	244 -5.43%	216 -16.28%
<b>12</b>	258 -5.84%	249 -9.12%	295 +7.66%	288 +5.11%	230 -16.06%	274 +0.00%	263 -4.01%	236 -13.87%	241 -12.04%	279 +1.82%	249 -9.12%

<b>K-5</b>	1,206 -7.66%	1,240 -5.05%	1,263 -3.29%	1,248 -4.44%	1,257 -3.75%	1,306 +0.00%	1,319 +1.00%	1,335 +2.22%	1,357 +3.91%	1,427 +9.26%	1,480 +13.32%
<b>6-8</b>	661 +1.07%	691 +5.66%	658 +0.61%	686 +4.89%	687 +5.05%	654 +0.00%	647 -1.07%	668 +2.14%	723 +10.55%	694 +6.12%	684 +4.59%
<b>9-12</b>	1,074 +5.71%	1,060 +4.33%	1,103 +8.56%	1,076 +5.91%	1,009 -0.69%	1,016 +0.00%	1,023 +0.69%	1,010 -0.59%	992 -2.36%	1,024 +0.79%	1,020 +0.39%
<b>K-12</b>	2,941 -1.18%	2,991 +0.50%	3,024 +1.61%	3,010 +1.14%	2,953 -0.77%	2,976 +0.00%	2,989 +0.44%	3,013 +1.24%	3,072 +3.23%	3,145 +5.68%	3,184 +6.99%

# Tomah Area School District

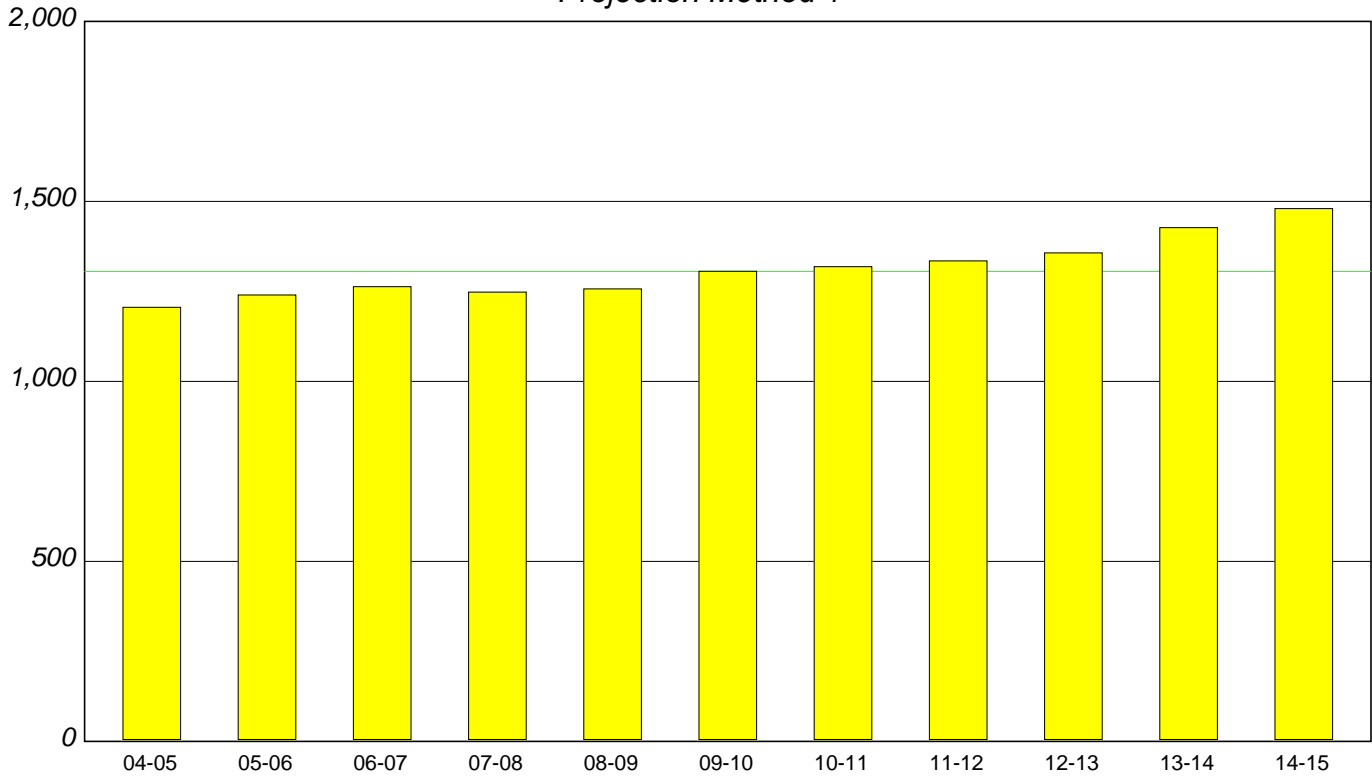
Table 4 - Enrollment Projected Ten Years  
Method 1

GRADE	2010-11	2011-12	2012-13	2013-14	2014-15	2015-16	2016-17	2017-18	2018-19	2019-20
<b>K</b>	217	223	235	244	249	0	0	0	0	0
<b>1</b>	240	221	227	240	249	254	0	0	0	0
<b>2</b>	209	248	228	235	248	257	263	0	0	0
<b>3</b>	192	212	252	231	238	252	261	267	0	0
<b>4</b>	233	196	217	258	236	244	258	267	273	0
<b>5</b>	228	235	198	219	260	238	246	260	269	275
<b>6</b>	236	238	245	207	228	271	248	257	271	281
<b>7</b>	191	236	238	245	207	228	271	248	257	271
<b>8</b>	220	194	240	242	249	211	232	276	253	262
<b>9</b>	286	255	225	278	280	288	244	268	319	293
<b>10</b>	243	283	252	223	275	277	285	241	265	316
<b>11</b>	231	236	274	244	216	267	269	276	234	257
<b>12</b>	263	236	241	279	249	220	272	274	281	239

# Tomah Area School District

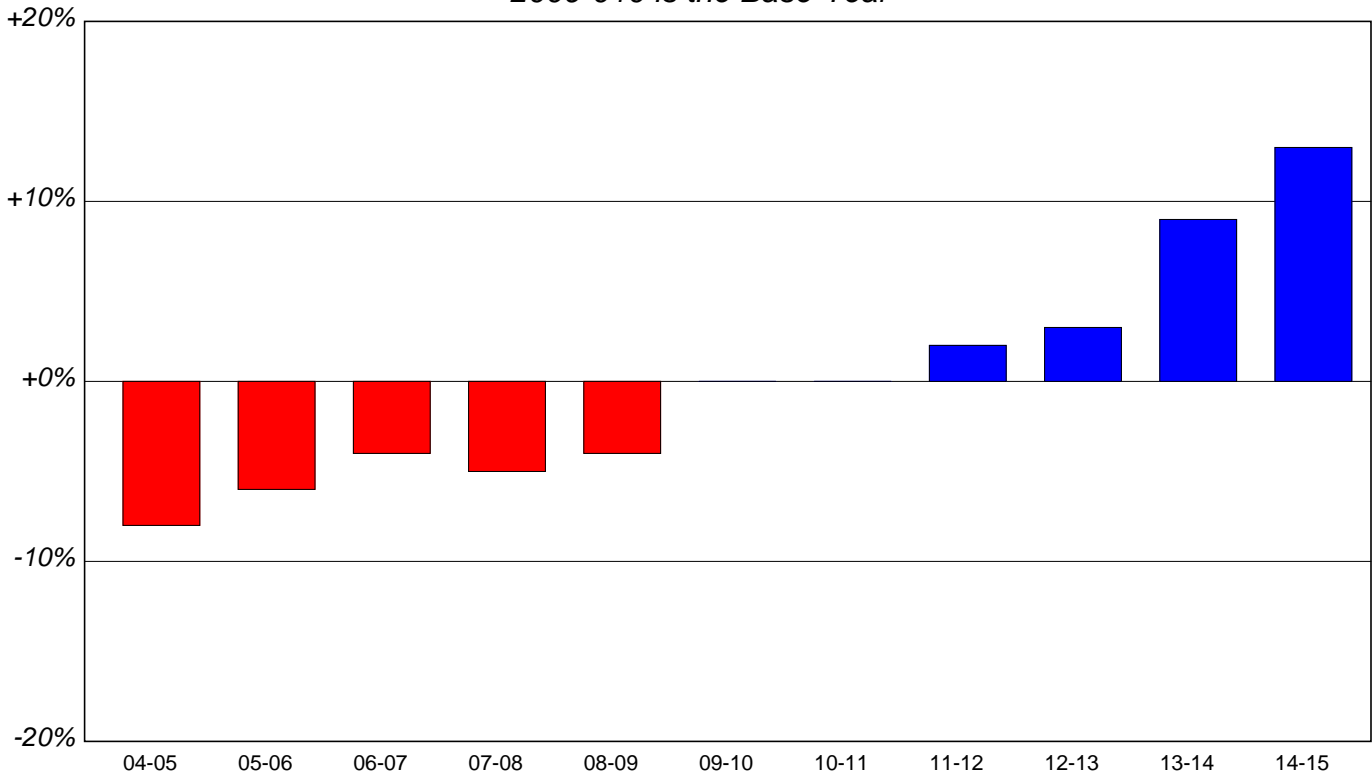
## Graph 1-A: K-5 Enrollment 2004-2015

*Projection Method 1*



## Graph 1-B: % Change in K-5 Enrollment

*2009-010 is the Base Year*



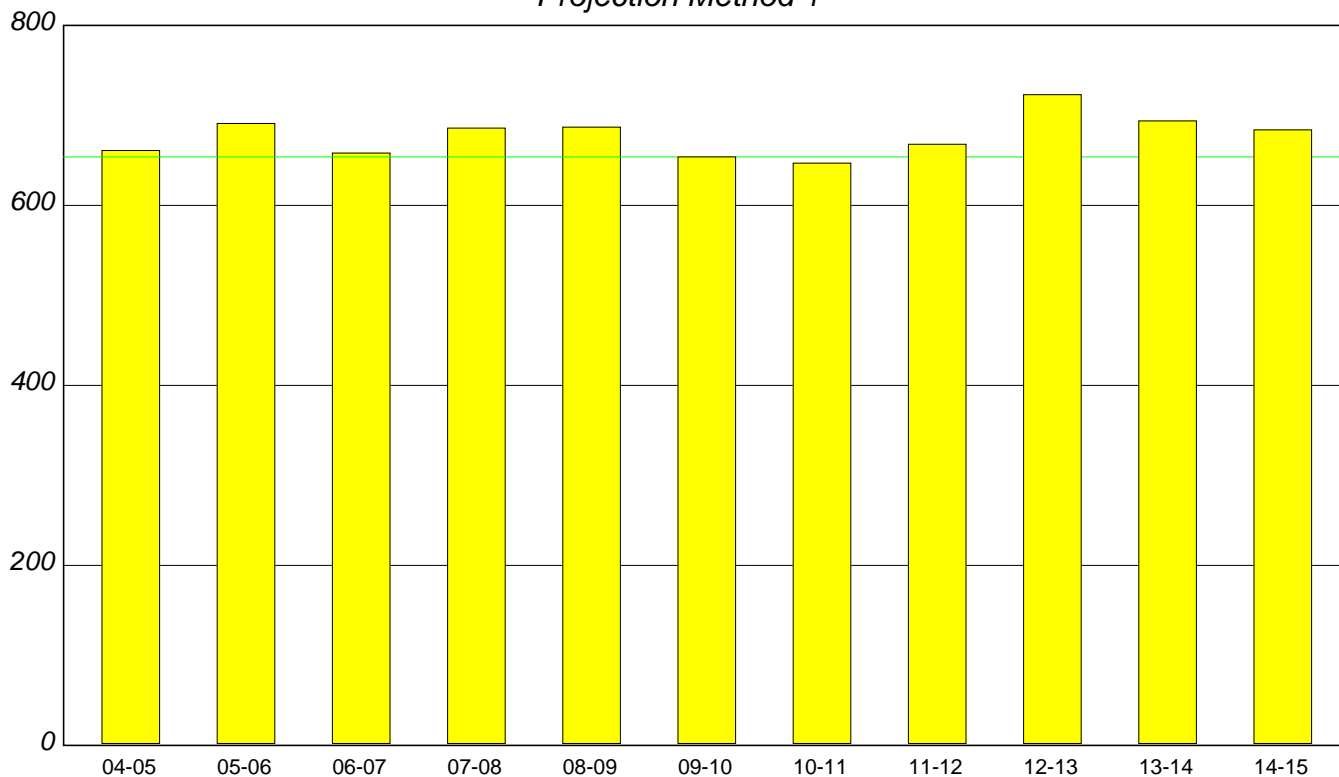
**NOTE:**

See Table 3 for specific enrollment numbers

# Tomah Area School District

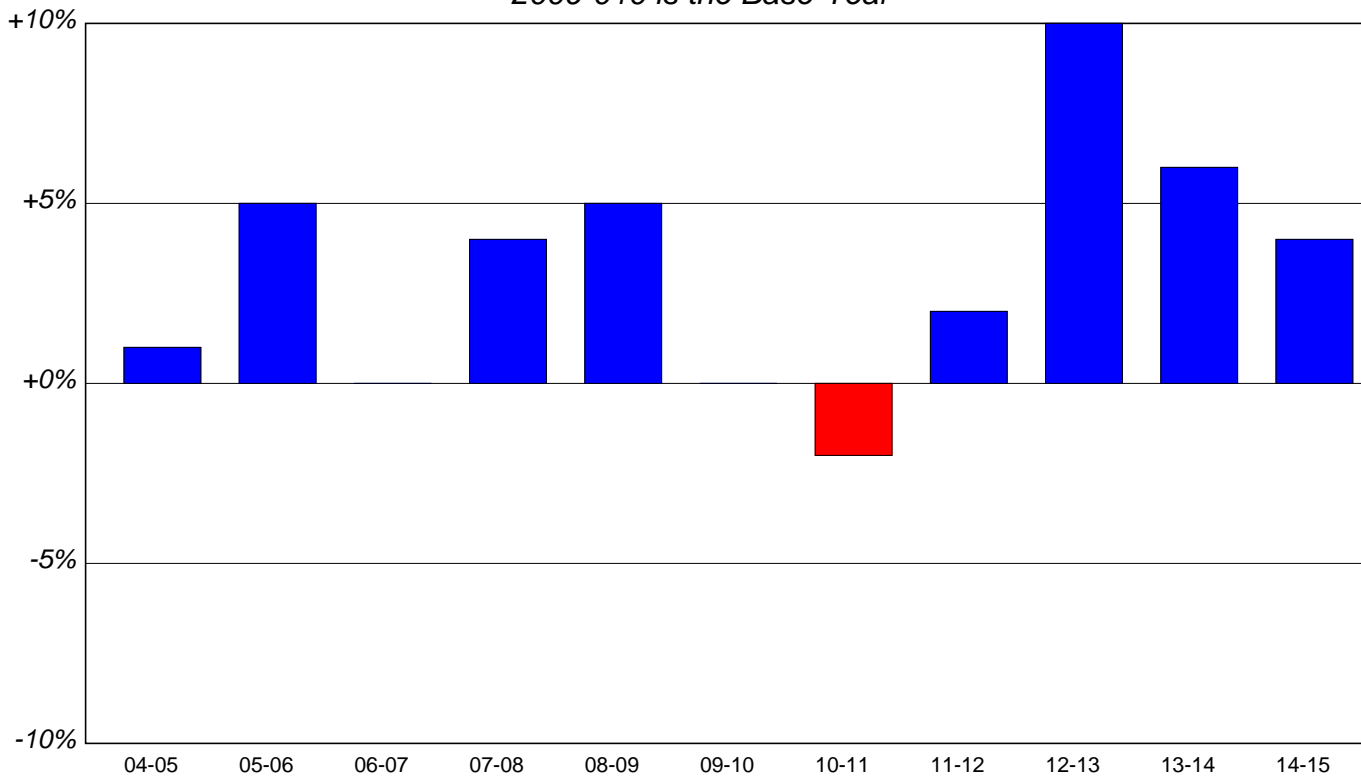
## Graph 2-A: 6-8 Enrollment 2004-2015

*Projection Method 1*



## Graph 2-B: % Change in 6-8 Enrollment

*2009-010 is the Base Year*



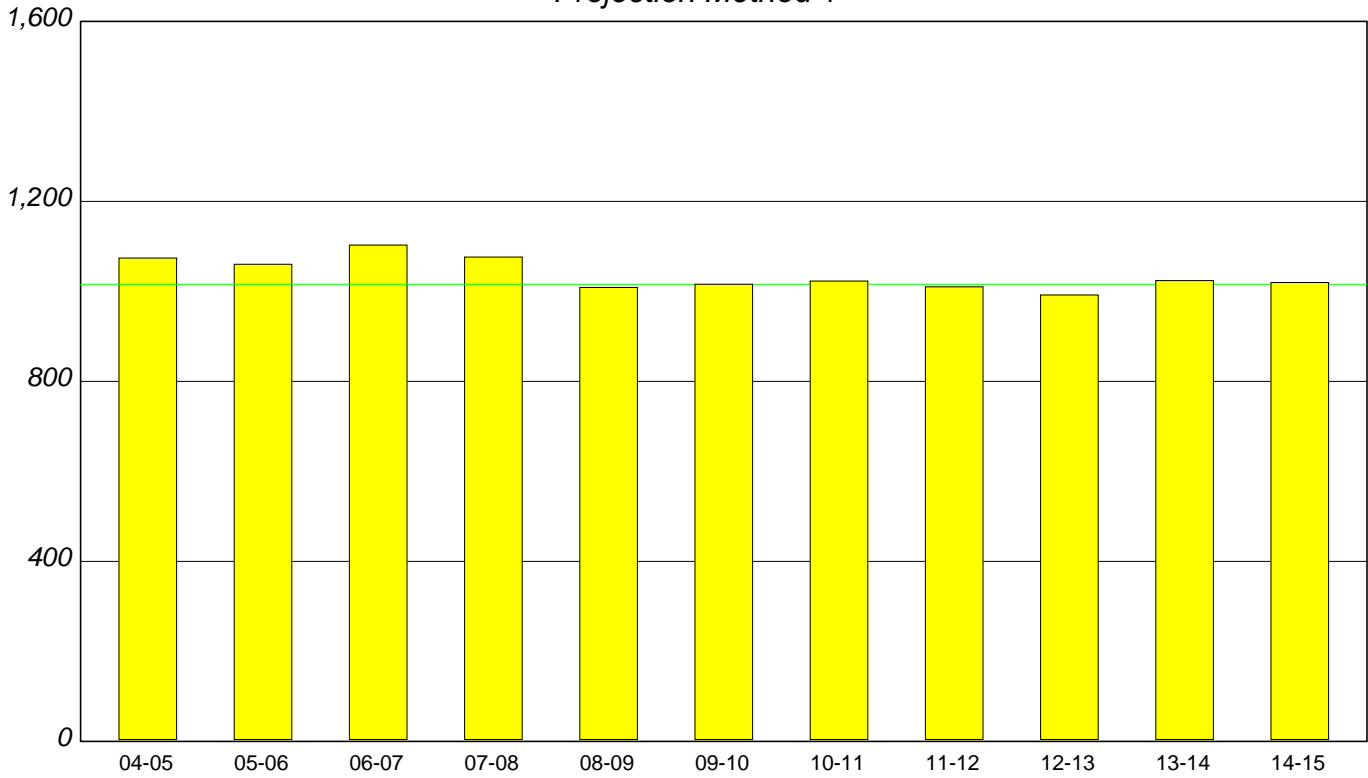
**NOTE:**

See Table 3 for specific enrollment numbers

# Tomah Area School District

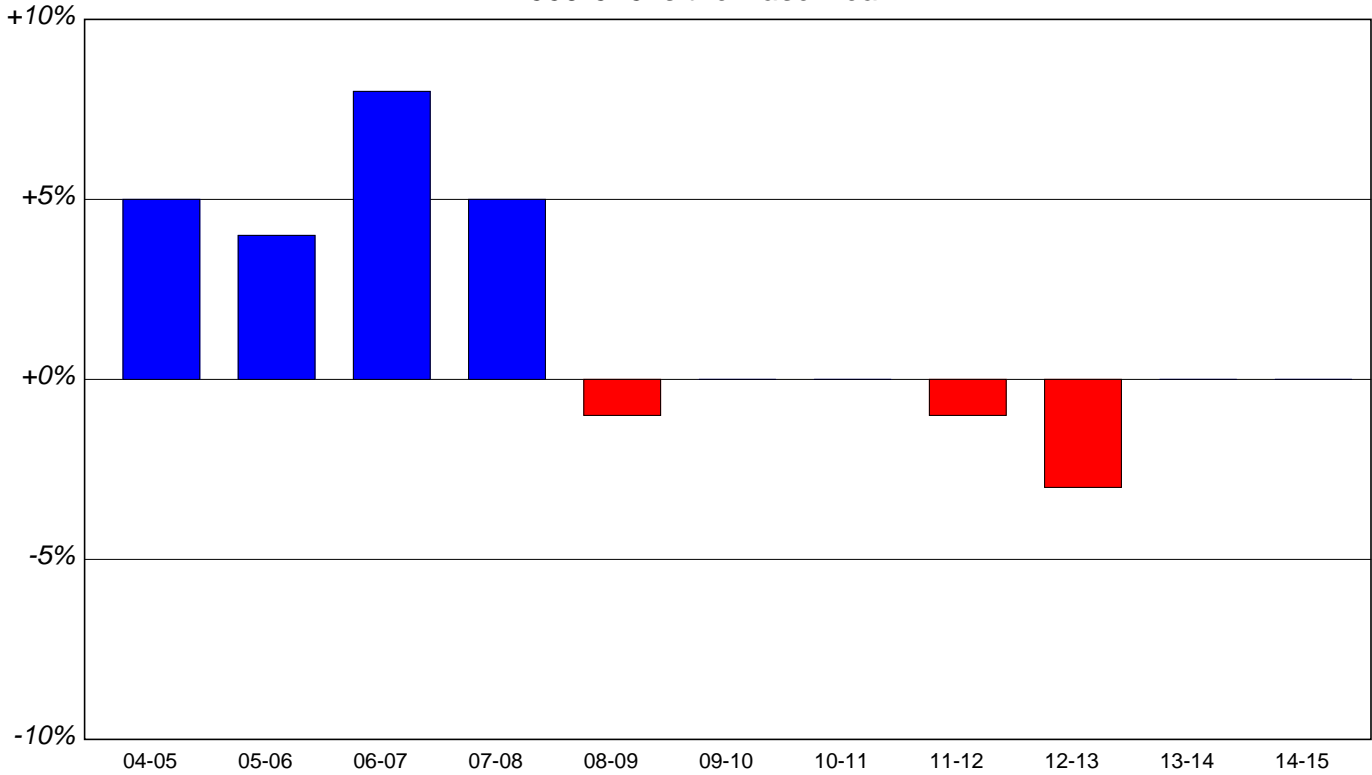
## Graph 3-A: 9-12 Enrollment 2004-2015

*Projection Method 1*



## Graph 3-B: % Change in 9-12 Enrollment

*2009-010 is the Base Year*



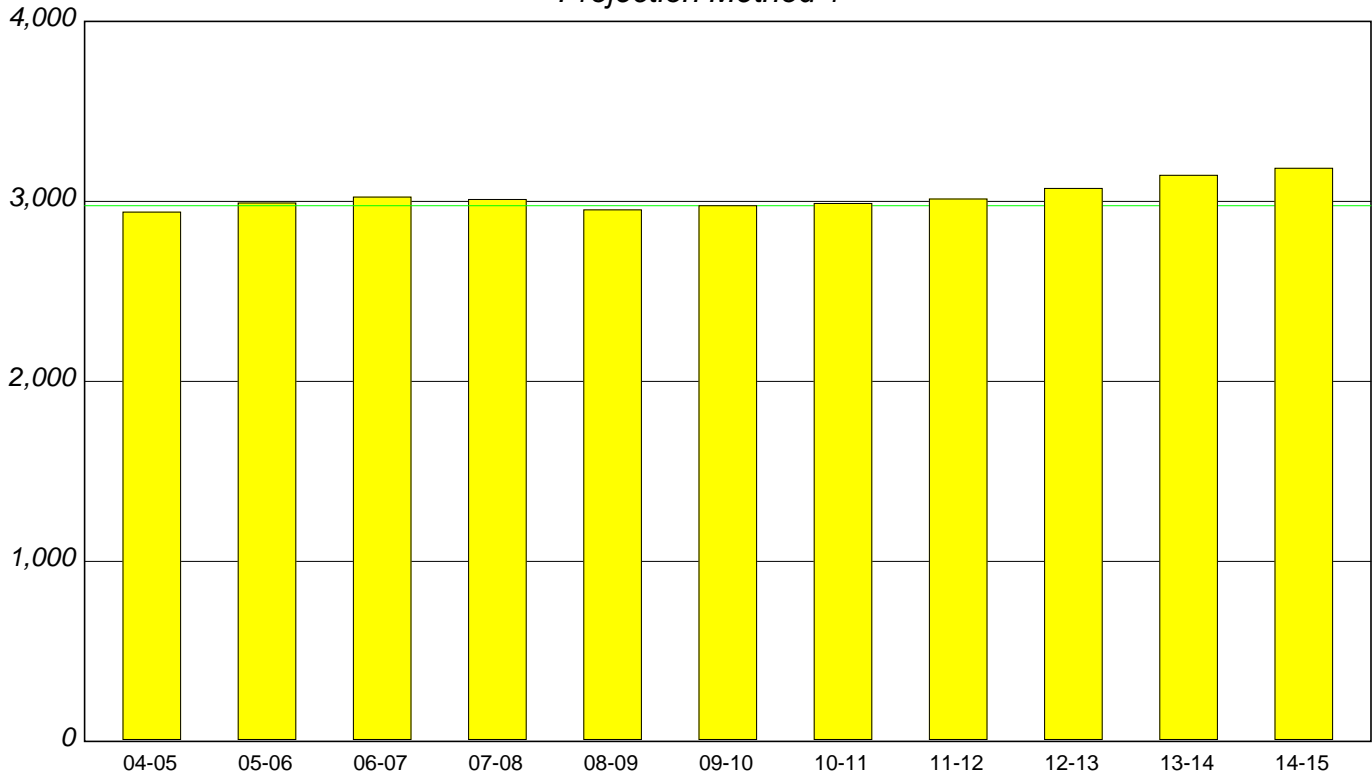
**NOTE:**

See Table 3 for specific enrollment numbers

# Tomah Area School District

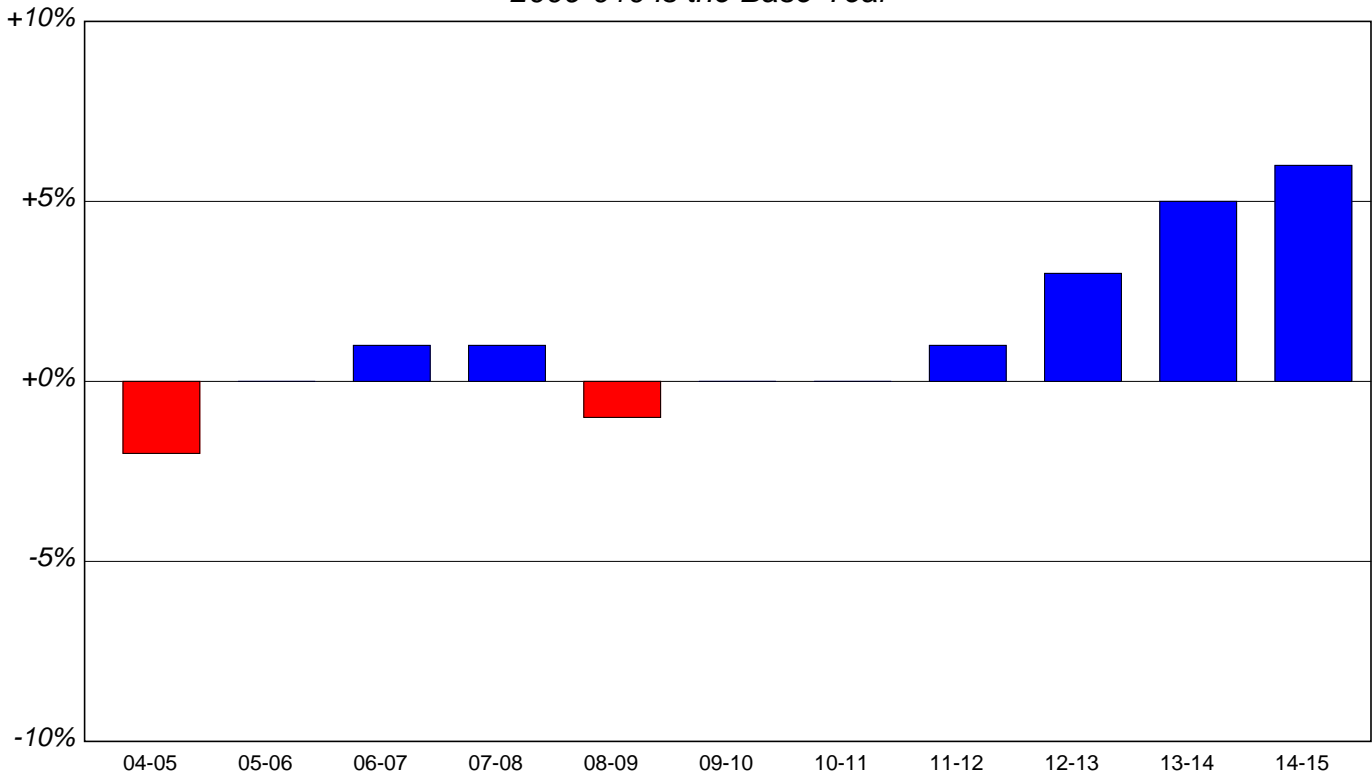
## Graph 4-A: K-12 Enrollment 2004-2015

*Projection Method 1*



## Graph 4-B: % Change in K-12 Enrollment

*2009-010 is the Base Year*



**NOTE:**

See Table 3 for specific enrollment numbers



# Tomah Area School District

Table 5 - Enrollment Projected Five Years  
Method 2

GRADE	2010-11	2011-12	2012-13	2013-14	2014-15
<b>K</b>	246 <i>40.03</i>	253 <i>40.03</i>	267 <i>40.03</i>	277 <i>40.03</i>	283 <i>40.03</i>
<b>1</b>	243 <i>103.59</i>	255 <i>103.59</i>	262 <i>103.59</i>	277 <i>103.59</i>	287 <i>103.59</i>
<b>2</b>	211 <i>104.42</i>	254 <i>104.42</i>	266 <i>104.42</i>	274 <i>104.42</i>	289 <i>104.42</i>
<b>3</b>	185 <i>97.85</i>	206 <i>97.85</i>	249 <i>97.85</i>	260 <i>97.85</i>	268 <i>97.85</i>
<b>4</b>	232 <i>101.80</i>	188 <i>101.80</i>	210 <i>101.80</i>	253 <i>101.80</i>	265 <i>101.80</i>
<b>5</b>	219 <i>97.00</i>	225 <i>97.00</i>	182 <i>97.00</i>	204 <i>97.00</i>	245 <i>97.00</i>
<b>6</b>	224 <i>98.96</i>	217 <i>98.96</i>	223 <i>98.96</i>	180 <i>98.96</i>	202 <i>98.96</i>
<b>7</b>	190 <i>99.54</i>	223 <i>99.54</i>	216 <i>99.54</i>	222 <i>99.54</i>	179 <i>99.54</i>
<b>8</b>	215 <i>99.60</i>	189 <i>99.60</i>	222 <i>99.60</i>	215 <i>99.60</i>	221 <i>99.60</i>
<b>9</b>	274 <i>110.81</i>	238 <i>110.81</i>	209 <i>110.81</i>	246 <i>110.81</i>	238 <i>110.81</i>
<b>10</b>	242 <i>98.35</i>	269 <i>98.35</i>	234 <i>98.35</i>	206 <i>98.35</i>	242 <i>98.35</i>
<b>11</b>	226 <i>94.85</i>	230 <i>94.85</i>	255 <i>94.85</i>	222 <i>94.85</i>	195 <i>94.85</i>
<b>12</b>	267 <i>103.40</i>	234 <i>103.40</i>	238 <i>103.40</i>	264 <i>103.40</i>	230 <i>103.40</i>

<b>K-5</b>	1,336	1,381	1,436	1,545	1,637
<b>6-8</b>	629	629	661	617	602
<b>9-12</b>	1,009	971	936	938	905
<b>K-12</b>	2,974	2,981	3,033	3,100	3,144

# Tomah Area School District

## Table 6 - Comparison of Past and Projected Enrollments Method 2

GRADE	2004-05	2005-06	2006-07	2007-08	2008-09	2009-10	2010-11	2011-12	2012-13	2013-14	2014-15
<b>K</b>	209 -11.06%	208 -11.49%	229 -2.55%	178 -24.26%	195 -17.02%	235 +0.00%	246 +4.68%	253 +7.66%	267 +13.62%	277 +17.87%	283 +20.43%
<b>1</b>	177 -12.38%	214 +5.94%	211 +4.46%	231 +14.36%	181 -10.40%	202 +0.00%	243 +20.30%	255 +26.24%	262 +29.70%	277 +37.13%	287 +42.08%
<b>2</b>	188 -0.53%	189 +0.00%	217 +14.81%	218 +15.34%	233 +23.28%	189 +0.00%	211 +11.64%	254 +34.39%	266 +40.74%	274 +44.97%	289 +52.91%
<b>3</b>	214 -6.14%	195 -14.47%	192 -15.79%	222 -2.63%	222 -2.63%	228 +0.00%	185 -18.86%	206 -9.65%	249 +9.21%	260 +14.04%	268 +17.54%
<b>4</b>	203 -10.18%	220 -2.65%	194 -14.16%	197 -12.83%	233 +3.10%	226 +0.00%	232 +2.65%	188 -16.81%	210 -7.08%	253 +11.95%	265 +17.26%
<b>5</b>	215 -4.87%	214 -5.31%	220 -2.65%	202 -10.62%	193 -14.60%	226 +0.00%	219 -3.10%	225 -0.44%	182 -19.47%	204 -9.73%	245 +8.41%
<b>6</b>	226 +18.32%	214 +12.04%	225 +17.80%	243 +27.23%	217 +13.61%	191 +0.00%	224 +17.28%	217 +13.61%	223 +16.75%	180 -5.76%	202 +5.76%
<b>7</b>	234 +8.33%	229 +6.02%	211 -2.31%	220 +1.85%	248 +14.81%	216 +0.00%	190 -12.04%	223 +3.24%	216 +0.00%	222 +2.78%	179 -17.13%
<b>8</b>	201 -18.62%	248 +0.40%	222 -10.12%	223 -9.72%	222 -10.12%	247 +0.00%	215 -12.96%	189 -23.48%	222 -10.12%	215 -12.96%	221 -10.53%
<b>9</b>	293 +19.11%	248 +0.81%	288 +17.07%	266 +8.13%	242 -1.63%	246 +0.00%	274 +11.38%	238 -3.25%	209 -15.04%	246 +0.00%	238 -3.25%
<b>10</b>	272 +14.29%	288 +21.01%	240 +0.84%	285 +19.75%	272 +14.29%	238 +0.00%	242 +1.68%	269 +13.03%	234 -1.68%	206 -13.45%	242 +1.68%
<b>11</b>	251 -2.71%	275 +6.59%	280 +8.53%	237 -8.14%	265 +2.71%	258 +0.00%	226 -12.40%	230 -10.85%	255 -1.16%	222 -13.95%	195 -24.42%
<b>12</b>	258 -5.84%	249 -9.12%	295 +7.66%	288 +5.11%	230 -16.06%	274 +0.00%	267 -2.55%	234 -14.60%	238 -13.14%	264 -3.65%	230 -16.06%

<b>K-5</b>	1,206 -7.66%	1,240 -5.05%	1,263 -3.29%	1,248 -4.44%	1,257 -3.75%	1,306 +0.00%	1,336 +2.30%	1,381 +5.74%	1,436 +9.95%	1,545 +18.30%	1,637 +25.34%
<b>6-8</b>	661 +1.07%	691 +5.66%	658 +0.61%	686 +4.89%	687 +5.05%	654 +0.00%	629 -3.82%	629 -3.82%	661 +1.07%	617 -5.66%	602 -7.95%
<b>9-12</b>	1,074 +5.71%	1,060 +4.33%	1,103 +8.56%	1,076 +5.91%	1,009 -0.69%	1,016 +0.00%	1,009 -0.69%	971 -4.43%	936 -7.87%	938 -7.68%	905 -10.93%
<b>K-12</b>	2,941 -1.18%	2,991 +0.50%	3,024 +1.61%	3,010 +1.14%	2,953 -0.77%	2,976 +0.00%	2,974 -0.07%	2,981 +0.17%	3,033 +1.92%	3,100 +4.17%	3,144 +5.65%

# Tomah Area School District

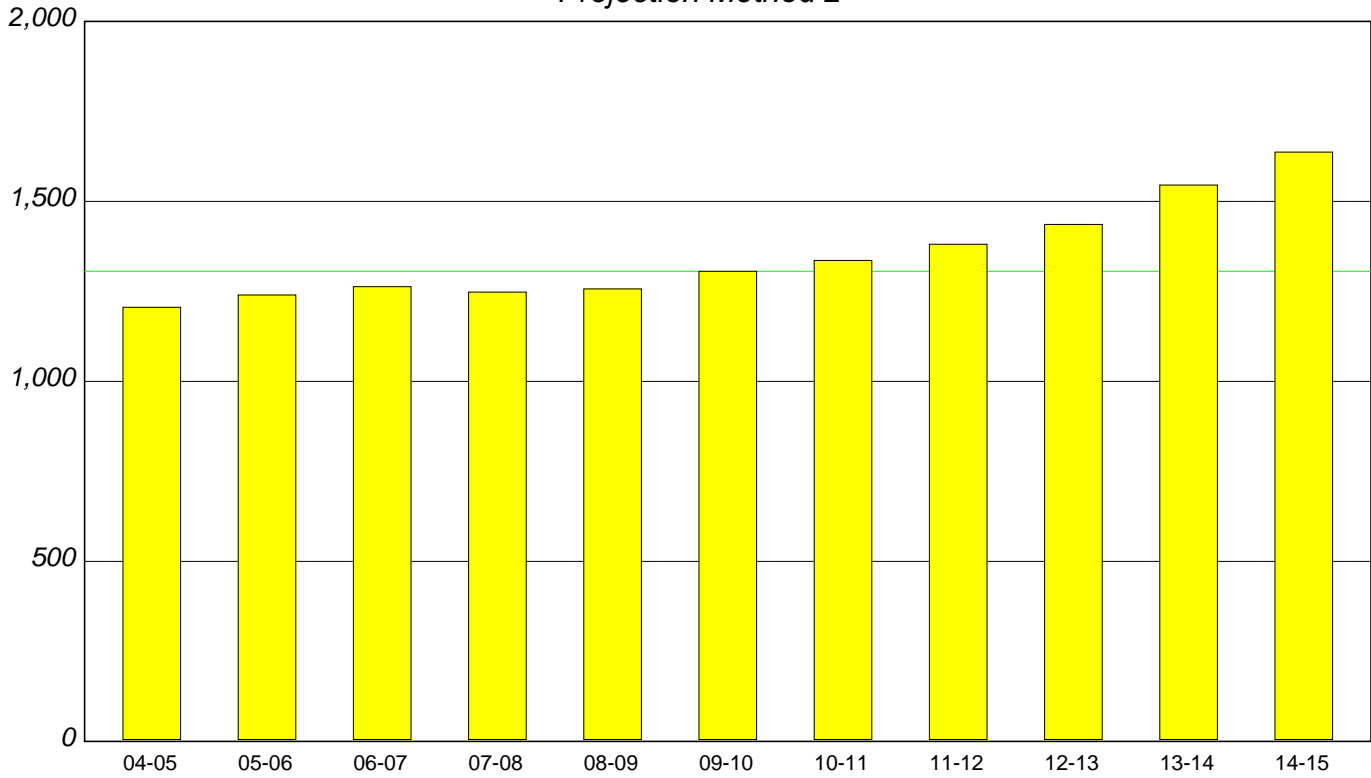
Table 7 - Enrollment Projected Ten Years  
Method 2

GRADE	2010-11	2011-12	2012-13	2013-14	2014-15	2015-16	2016-17	2017-18	2018-19	2019-20
<b>K</b>	246	253	267	277	283	0	0	0	0	0
<b>1</b>	243	255	262	277	287	293	0	0	0	0
<b>2</b>	211	254	266	274	289	300	306	0	0	0
<b>3</b>	185	206	249	260	268	283	294	299	0	0
<b>4</b>	232	188	210	253	265	273	288	299	304	0
<b>5</b>	219	225	182	204	245	257	265	279	290	295
<b>6</b>	224	217	223	180	202	242	254	262	276	287
<b>7</b>	190	223	216	222	179	201	241	253	261	275
<b>8</b>	215	189	222	215	221	178	200	240	252	260
<b>9</b>	274	238	209	246	238	245	197	222	266	279
<b>10</b>	242	269	234	206	242	234	241	194	218	262
<b>11</b>	226	230	255	222	195	230	222	229	184	207
<b>12</b>	267	234	238	264	230	202	238	230	237	190

# Tomah Area School District

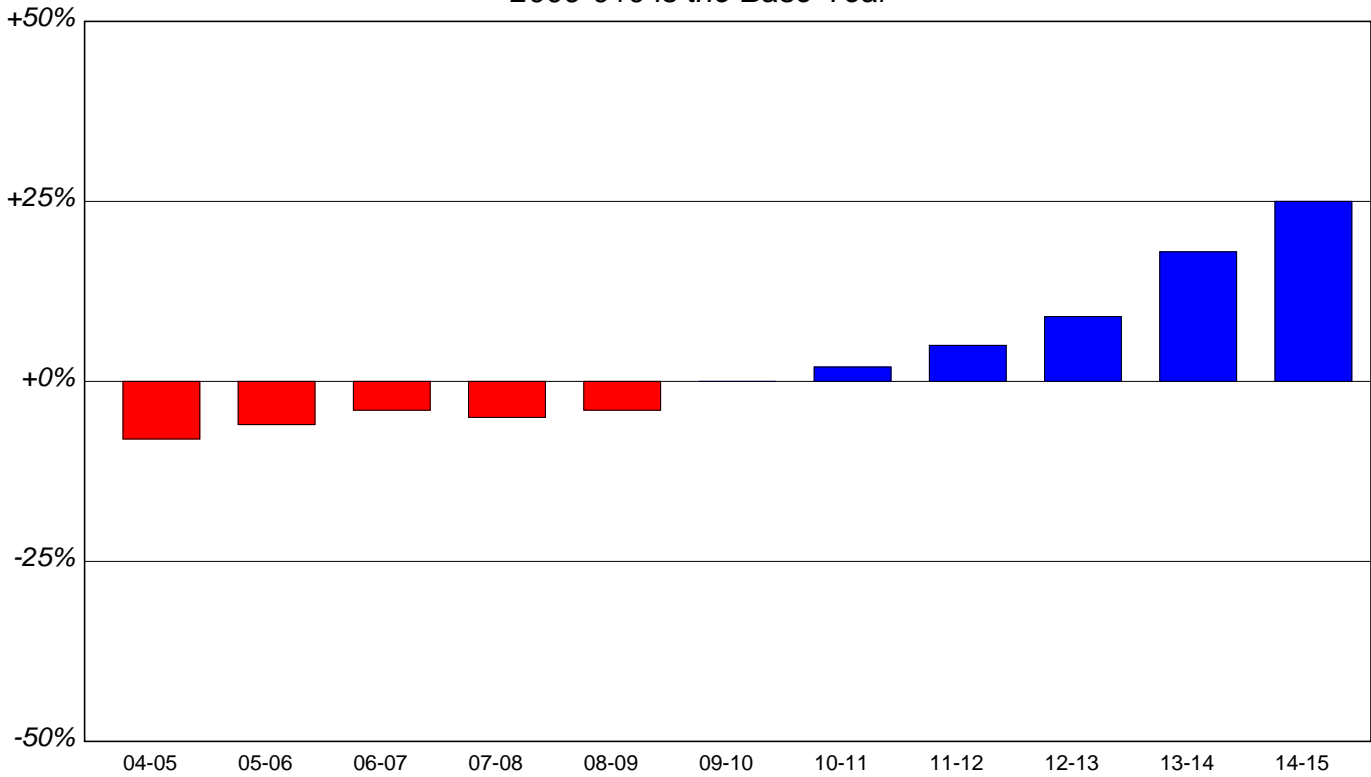
## Graph 5-A: K-5 Enrollment 2004-2015

*Projection Method 2*



## Graph 5-B: % Change in K-5 Enrollment

*2009-010 is the Base Year*



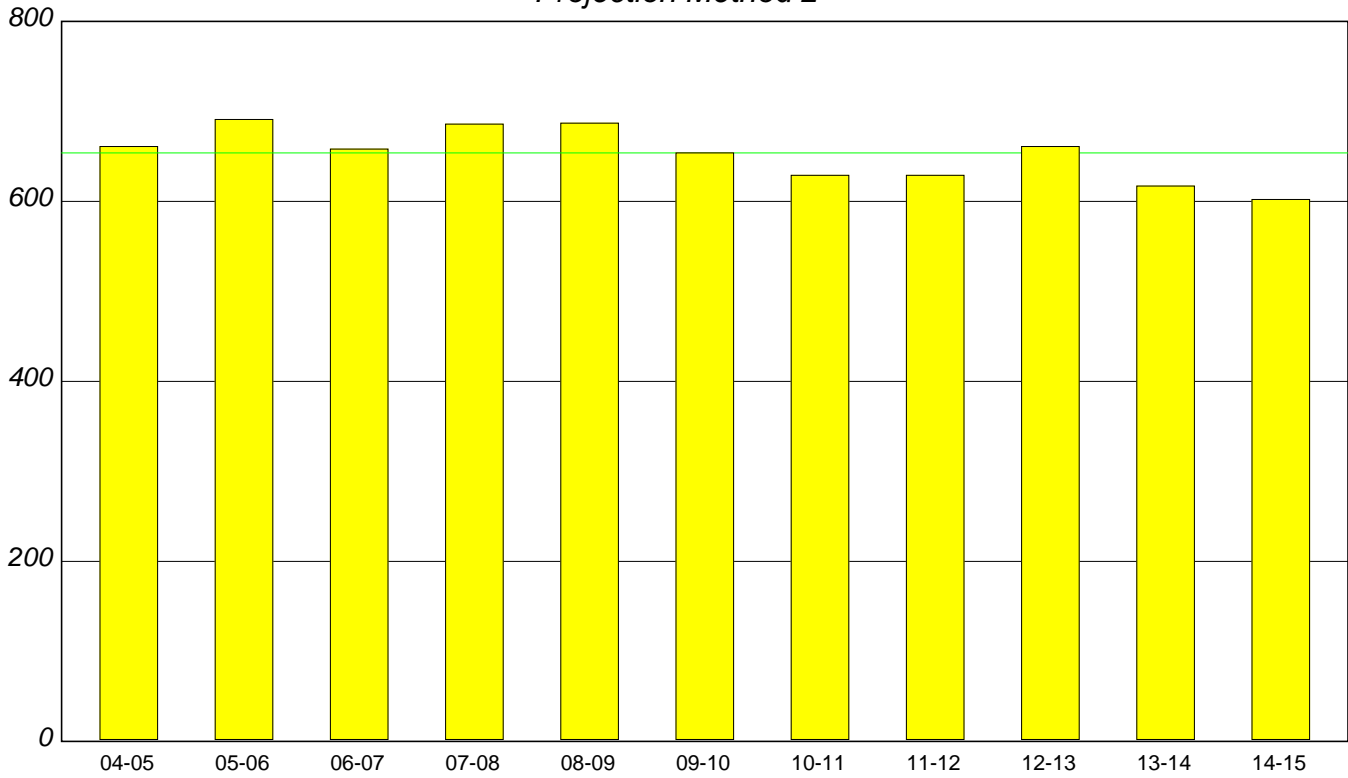
**NOTE:**

See Table 6 for specific enrollment numbers

# Tomah Area School District

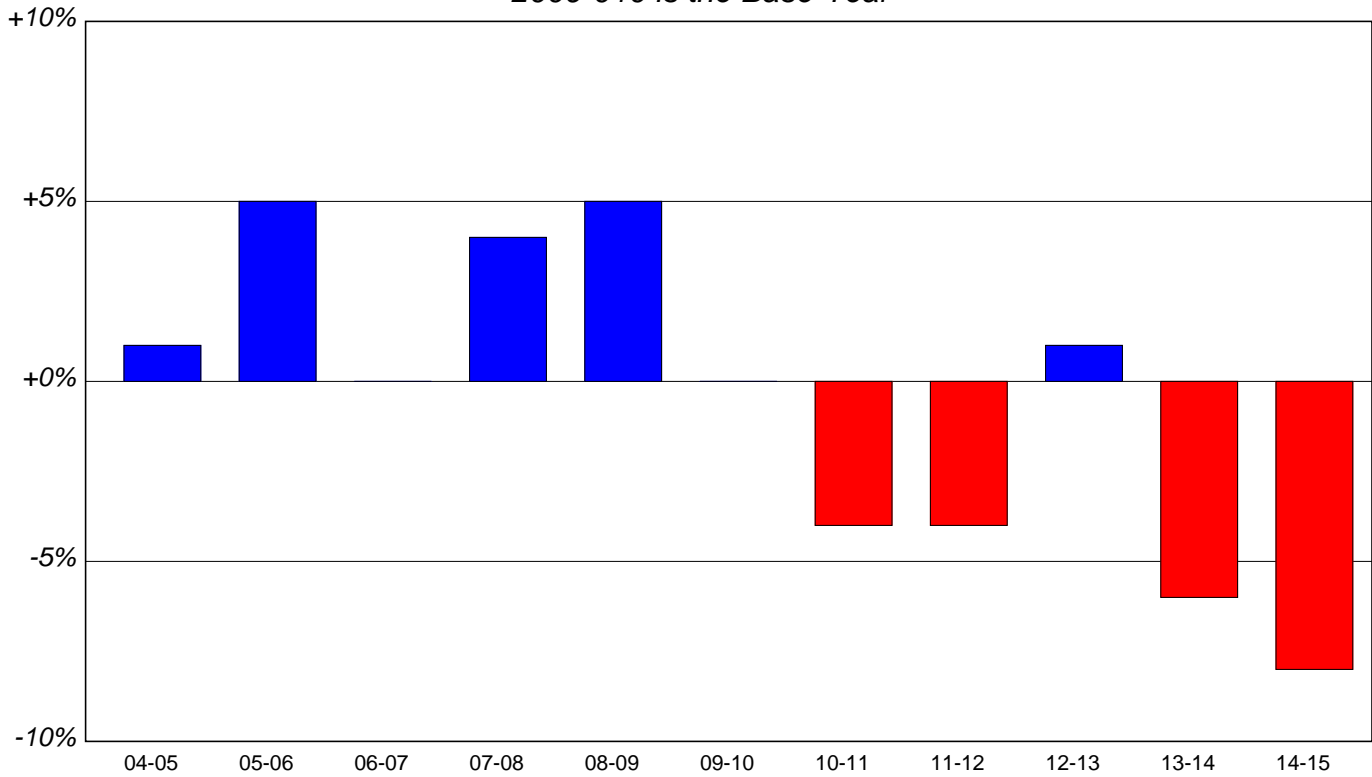
## Graph 6-A: 6-8 Enrollment 2004-2015

*Projection Method 2*



## Graph 6-B: % Change in 6-8 Enrollment

*2009-010 is the Base Year*



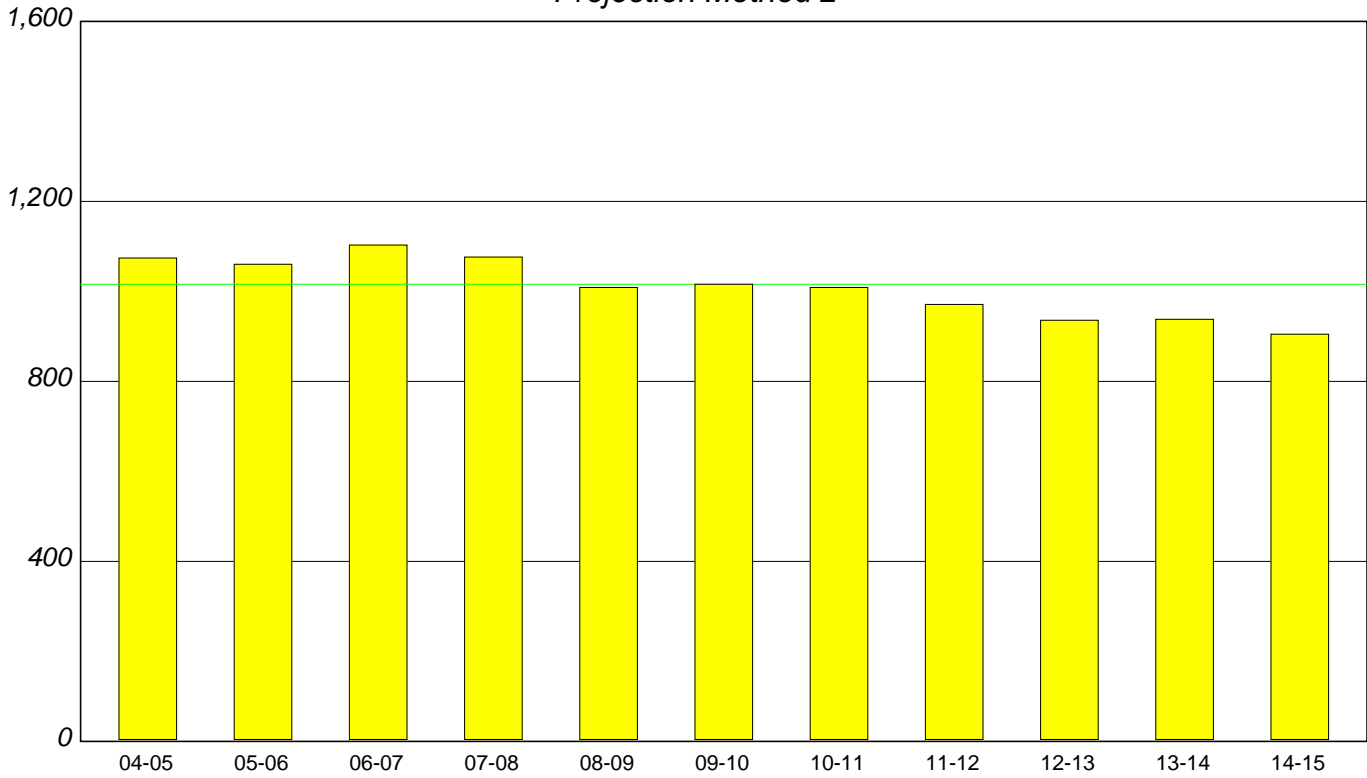
**NOTE:**

See Table 6 for specific enrollment numbers

# Tomah Area School District

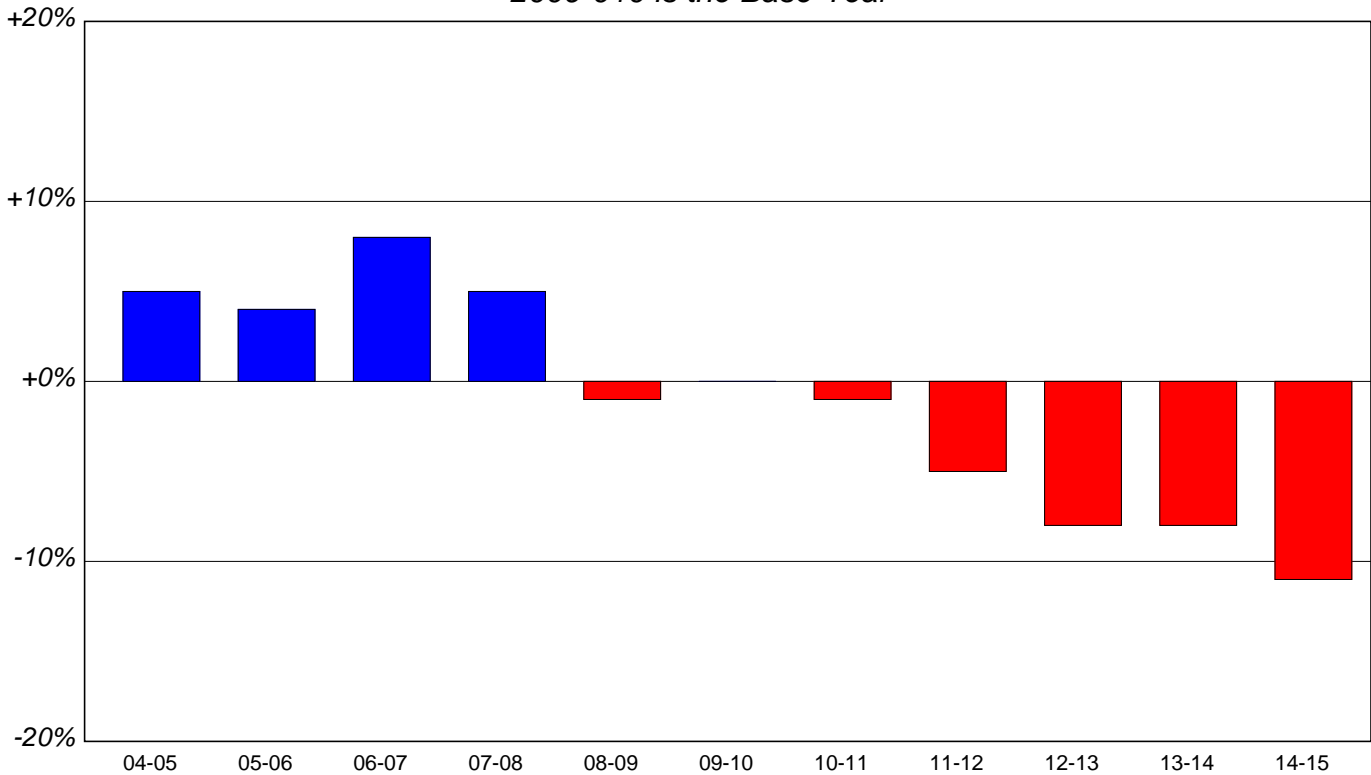
## Graph 7-A: 9-12 Enrollment 2004-2015

*Projection Method 2*



## Graph 7-B: % Change in 9-12 Enrollment

*2009-010 is the Base Year*



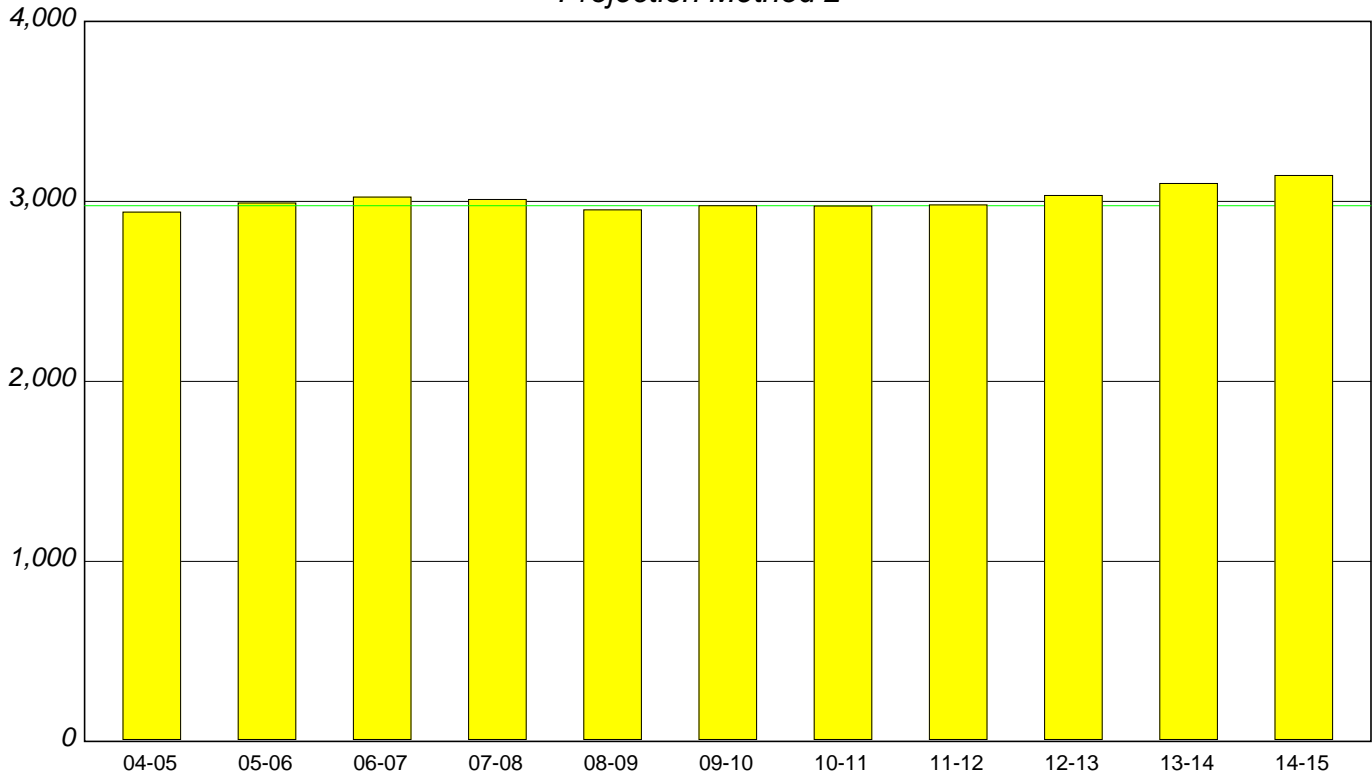
**NOTE:**

See Table 6 for specific enrollment numbers

# Tomah Area School District

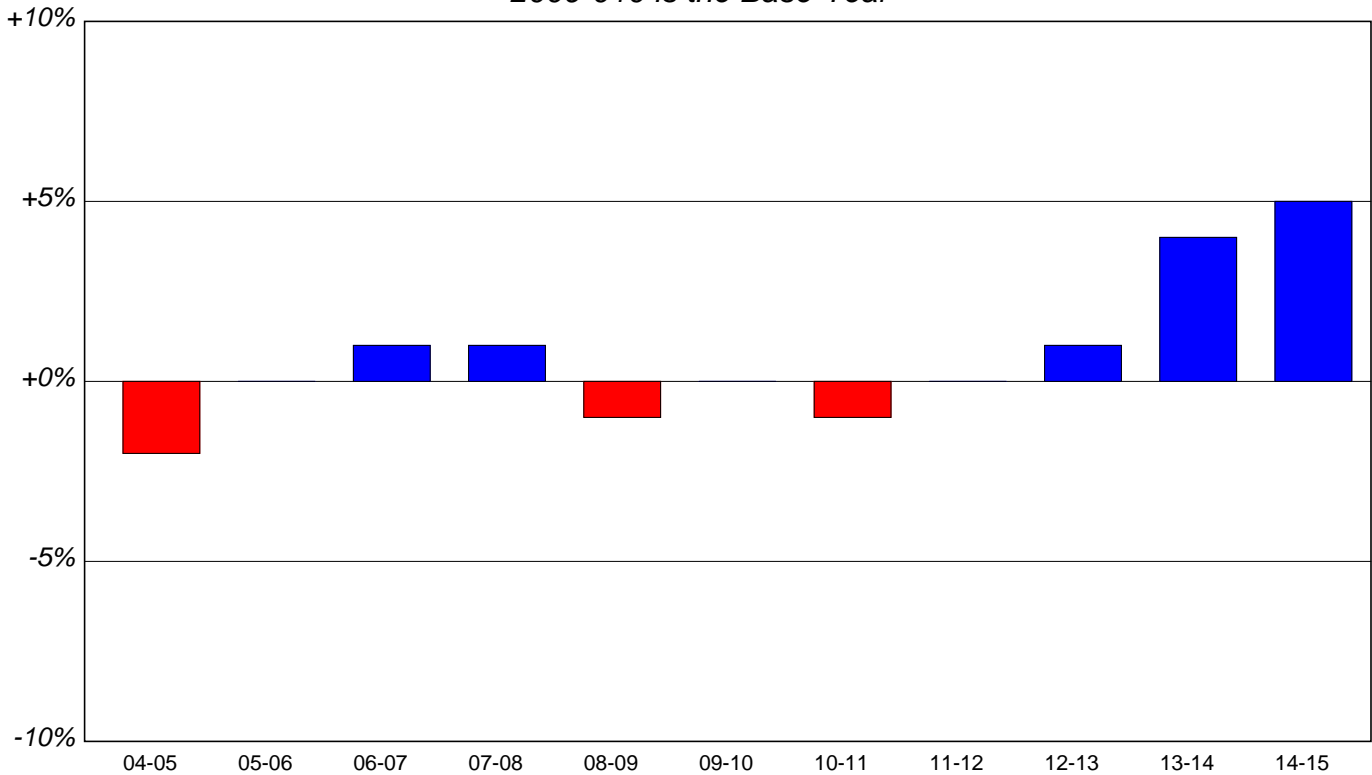
## Graph 8-A: K-12 Enrollment 2004-2015

*Projection Method 2*



## Graph 8-B: % Change in K-12 Enrollment

*2009-010 is the Base Year*



**NOTE:**

See Table 6 for specific enrollment numbers

# Tomah Area School District

Table 8 - Enrollment Projected Five Years  
Method 3

GRADE	2010-11	2011-12	2012-13	2013-14	2014-15
<b>K</b>	232 <i>37.65</i>	238 <i>37.65</i>	251 <i>37.65</i>	260 <i>37.65</i>	266 <i>37.65</i>
<b>1</b>	242 <i>102.79</i>	238 <i>102.79</i>	245 <i>102.79</i>	258 <i>102.79</i>	267 <i>102.79</i>
<b>2</b>	210 <i>103.89</i>	251 <i>103.89</i>	247 <i>103.89</i>	255 <i>103.89</i>	268 <i>103.89</i>
<b>3</b>	188 <i>99.66</i>	209 <i>99.66</i>	250 <i>99.66</i>	246 <i>99.66</i>	254 <i>99.66</i>
<b>4</b>	233 <i>102.07</i>	192 <i>102.07</i>	213 <i>102.07</i>	255 <i>102.07</i>	251 <i>102.07</i>
<b>5</b>	224 <i>98.95</i>	231 <i>98.95</i>	190 <i>98.95</i>	211 <i>98.95</i>	252 <i>98.95</i>
<b>6</b>	230 <i>101.63</i>	228 <i>101.63</i>	235 <i>101.63</i>	193 <i>101.63</i>	214 <i>101.63</i>
<b>7</b>	190 <i>99.70</i>	229 <i>99.70</i>	227 <i>99.70</i>	234 <i>99.70</i>	192 <i>99.70</i>
<b>8</b>	218 <i>100.71</i>	191 <i>100.71</i>	231 <i>100.71</i>	229 <i>100.71</i>	236 <i>100.71</i>
<b>9</b>	280 <i>113.27</i>	247 <i>113.27</i>	216 <i>113.27</i>	262 <i>113.27</i>	259 <i>113.27</i>
<b>10</b>	243 <i>98.64</i>	276 <i>98.64</i>	244 <i>98.64</i>	213 <i>98.64</i>	258 <i>98.64</i>
<b>11</b>	228 <i>95.92</i>	233 <i>95.92</i>	265 <i>95.92</i>	234 <i>95.92</i>	204 <i>95.92</i>
<b>12</b>	265 <i>102.68</i>	234 <i>102.68</i>	239 <i>102.68</i>	272 <i>102.68</i>	240 <i>102.68</i>

<b>K-5</b>	1,329	1,359	1,396	1,485	1,558
<b>6-8</b>	638	648	693	656	642
<b>9-12</b>	1,016	990	964	981	961
<b>K-12</b>	2,983	2,997	3,053	3,122	3,161



# Tomah Area School District

## Table 9 - Comparison of Past and Projected Enrollments Method 3

GRADE	2004-05	2005-06	2006-07	2007-08	2008-09	2009-10	2010-11	2011-12	2012-13	2013-14	2014-15
<b>K</b>	209 -11.06%	208 -11.49%	229 -2.55%	178 -24.26%	195 -17.02%	235 +0.00%	232 -1.28%	238 +1.28%	251 +6.81%	260 +10.64%	266 +13.19%
<b>1</b>	177 -12.38%	214 +5.94%	211 +4.46%	231 +14.36%	181 -10.40%	202 +0.00%	242 +19.80%	238 +17.82%	245 +21.29%	258 +27.72%	267 +32.18%
<b>2</b>	188 -0.53%	189 +0.00%	217 +14.81%	218 +15.34%	233 +23.28%	189 +0.00%	210 +11.11%	251 +32.80%	247 +30.69%	255 +34.92%	268 +41.80%
<b>3</b>	214 -6.14%	195 -14.47%	192 -15.79%	222 -2.63%	222 -2.63%	228 +0.00%	188 -17.54%	209 -8.33%	250 +9.65%	246 +7.89%	254 +11.40%
<b>4</b>	203 -10.18%	220 -2.65%	194 -14.16%	197 -12.83%	233 +3.10%	226 +0.00%	233 +3.10%	192 -15.04%	213 -5.75%	255 +12.83%	251 +11.06%
<b>5</b>	215 -4.87%	214 -5.31%	220 -2.65%	202 -10.62%	193 -14.60%	226 +0.00%	224 -0.88%	231 +2.21%	190 -15.93%	211 -6.64%	252 +11.50%
<b>6</b>	226 +18.32%	214 +12.04%	225 +17.80%	243 +27.23%	217 +13.61%	191 +0.00%	230 +20.42%	228 +19.37%	235 +23.04%	193 +1.05%	214 +12.04%
<b>7</b>	234 +8.33%	229 +6.02%	211 -2.31%	220 +1.85%	248 +14.81%	216 +0.00%	190 -12.04%	229 +6.02%	227 +5.09%	234 +8.33%	192 -11.11%
<b>8</b>	201 -18.62%	248 +0.40%	222 -10.12%	223 -9.72%	222 -10.12%	247 +0.00%	218 -11.74%	191 -22.67%	231 -6.48%	229 -7.29%	236 -4.45%
<b>9</b>	293 +19.11%	248 +0.81%	288 +17.07%	266 +8.13%	242 -1.63%	246 +0.00%	280 +13.82%	247 +0.41%	216 -12.20%	262 +6.50%	259 +5.28%
<b>10</b>	272 +14.29%	288 +21.01%	240 +0.84%	285 +19.75%	272 +14.29%	238 +0.00%	243 +2.10%	276 +15.97%	244 +2.52%	213 -10.50%	258 +8.40%
<b>11</b>	251 -2.71%	275 +6.59%	280 +8.53%	237 -8.14%	265 +2.71%	258 +0.00%	228 -11.63%	233 -9.69%	265 +2.71%	234 -9.30%	204 -20.93%
<b>12</b>	258 -5.84%	249 -9.12%	295 +7.66%	288 +5.11%	230 -16.06%	274 +0.00%	265 -3.28%	234 -14.60%	239 -12.77%	272 -0.73%	240 -12.41%

<b>K-5</b>	1,206 -7.66%	1,240 -5.05%	1,263 -3.29%	1,248 -4.44%	1,257 -3.75%	1,306 +0.00%	1,329 +1.76%	1,359 +4.06%	1,396 +6.89%	1,485 +13.71%	1,558 +19.30%
<b>6-8</b>	661 +1.07%	691 +5.66%	658 +0.61%	686 +4.89%	687 +5.05%	654 +0.00%	638 -2.45%	648 -0.92%	693 +5.96%	656 +0.31%	642 -1.83%
<b>9-12</b>	1,074 +5.71%	1,060 +4.33%	1,103 +8.56%	1,076 +5.91%	1,009 -0.69%	1,016 +0.00%	1,016 +0.00%	990 -2.56%	964 -5.12%	981 -3.44%	961 -5.41%
<b>K-12</b>	2,941 -1.18%	2,991 +0.50%	3,024 +1.61%	3,010 +1.14%	2,953 -0.77%	2,976 +0.00%	2,983 +0.24%	2,997 +0.71%	3,053 +2.59%	3,122 +4.91%	3,161 +6.22%

# Tomah Area School District

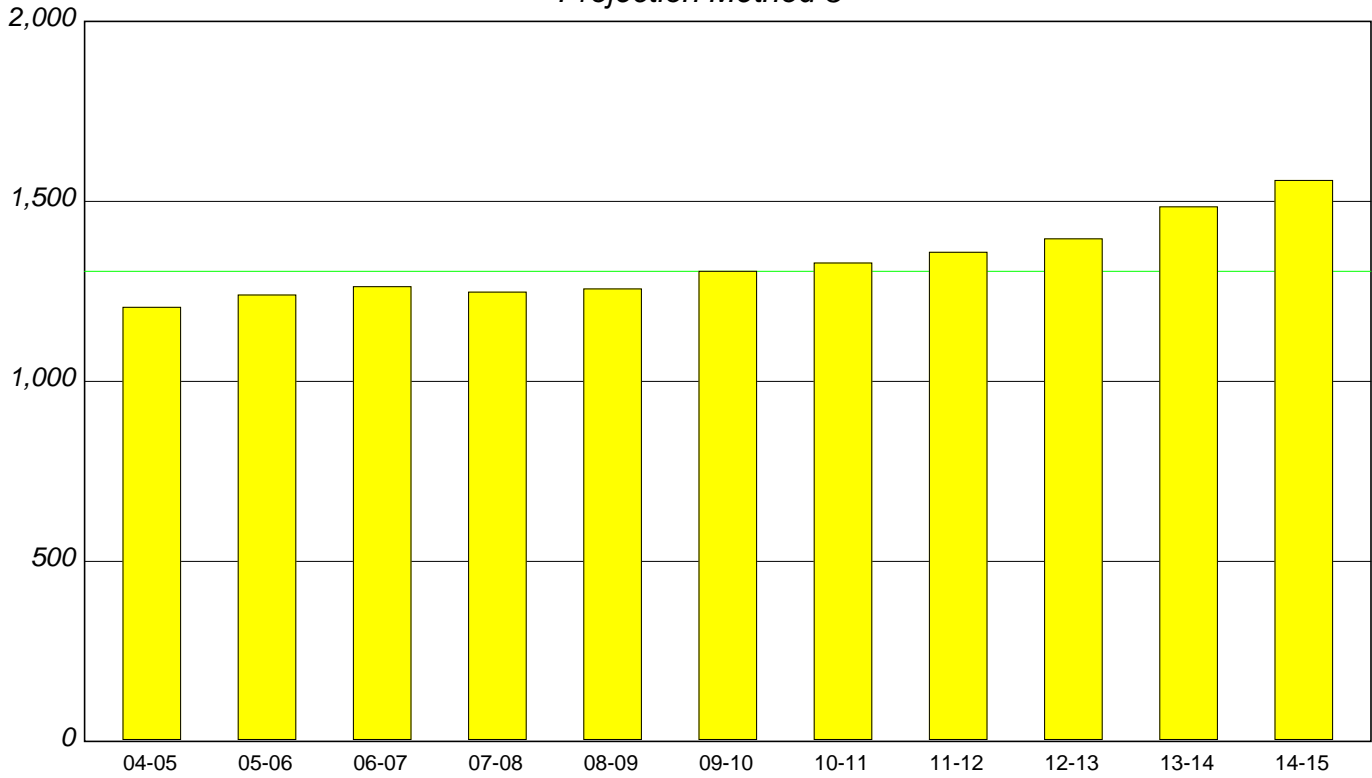
Table 10 - Enrollment Projected Ten Years  
Method 3

GRADE	2010-11	2011-12	2012-13	2013-14	2014-15	2015-16	2016-17	2017-18	2018-19	2019-20
<b>K</b>	232	238	251	260	266	0	0	0	0	0
<b>1</b>	242	238	245	258	267	273	0	0	0	0
<b>2</b>	210	251	247	255	268	277	284	0	0	0
<b>3</b>	188	209	250	246	254	267	276	283	0	0
<b>4</b>	233	192	213	255	251	259	273	282	289	0
<b>5</b>	224	231	190	211	252	248	256	270	279	286
<b>6</b>	230	228	235	193	214	256	252	260	274	284
<b>7</b>	190	229	227	234	192	213	255	251	259	273
<b>8</b>	218	191	231	229	236	193	215	257	253	261
<b>9</b>	280	247	216	262	259	267	219	244	291	287
<b>10</b>	243	276	244	213	258	255	263	216	241	287
<b>11</b>	228	233	265	234	204	247	245	252	207	231
<b>12</b>	265	234	239	272	240	209	254	252	259	213

# Tomah Area School District

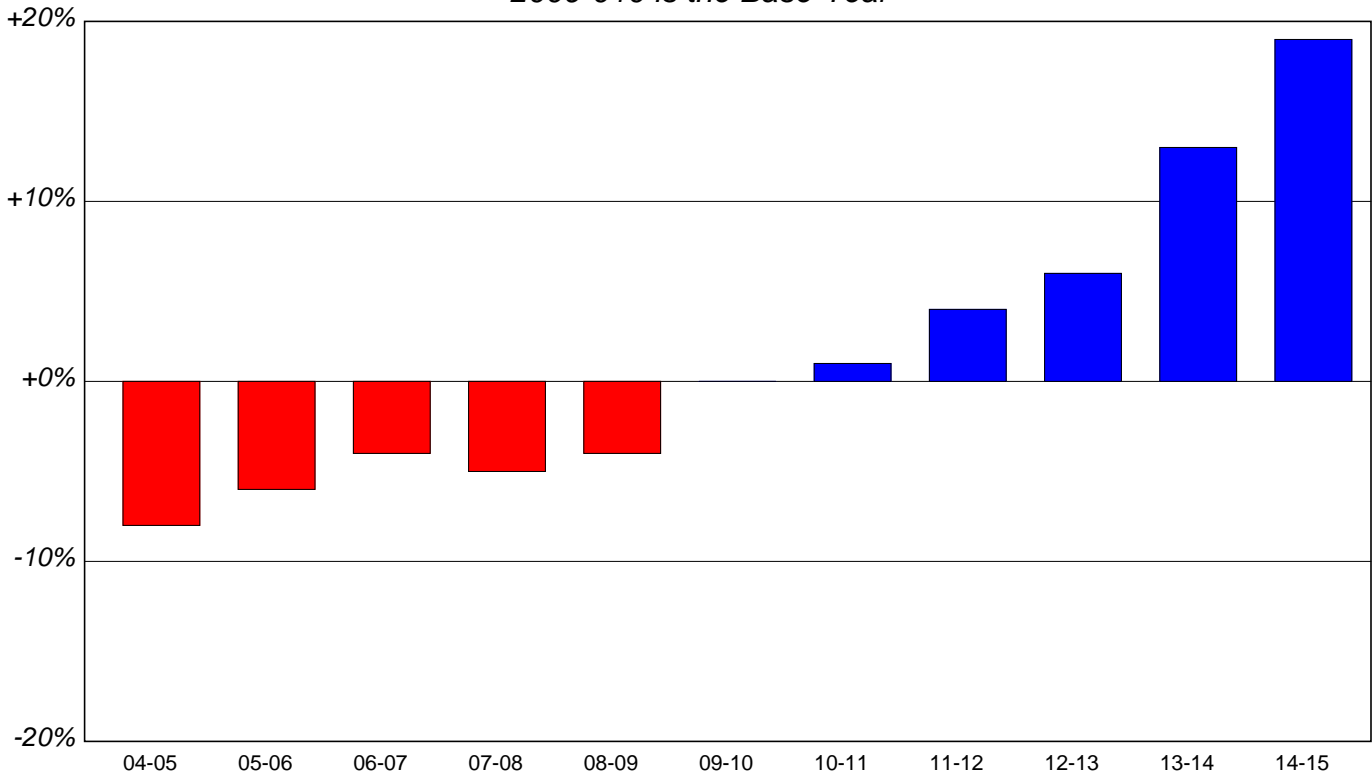
## Graph 9-A: K-5 Enrollment 2004-2015

*Projection Method 3*



## Graph 9-B: % Change in K-5 Enrollment

*2009-010 is the Base Year*



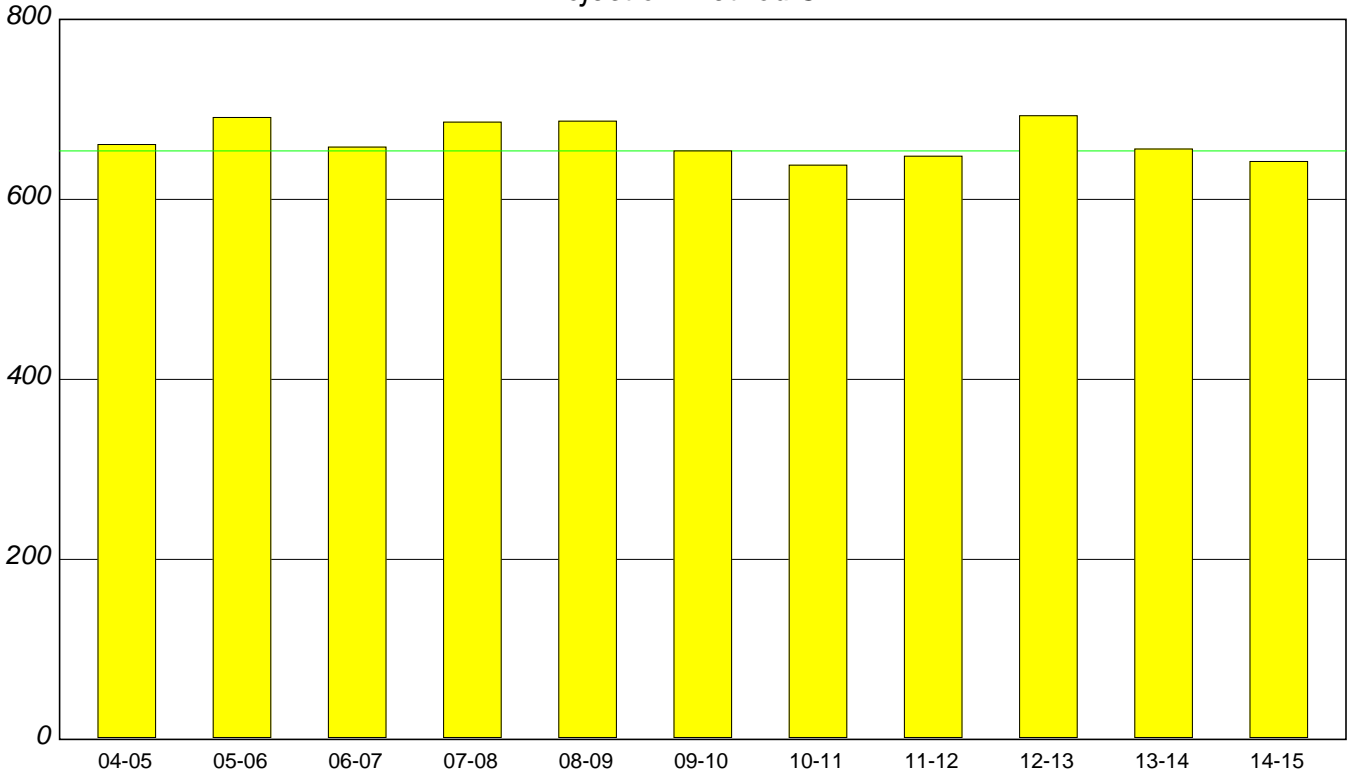
**NOTE:**

See Table 9 for specific enrollment numbers

# Tomah Area School District

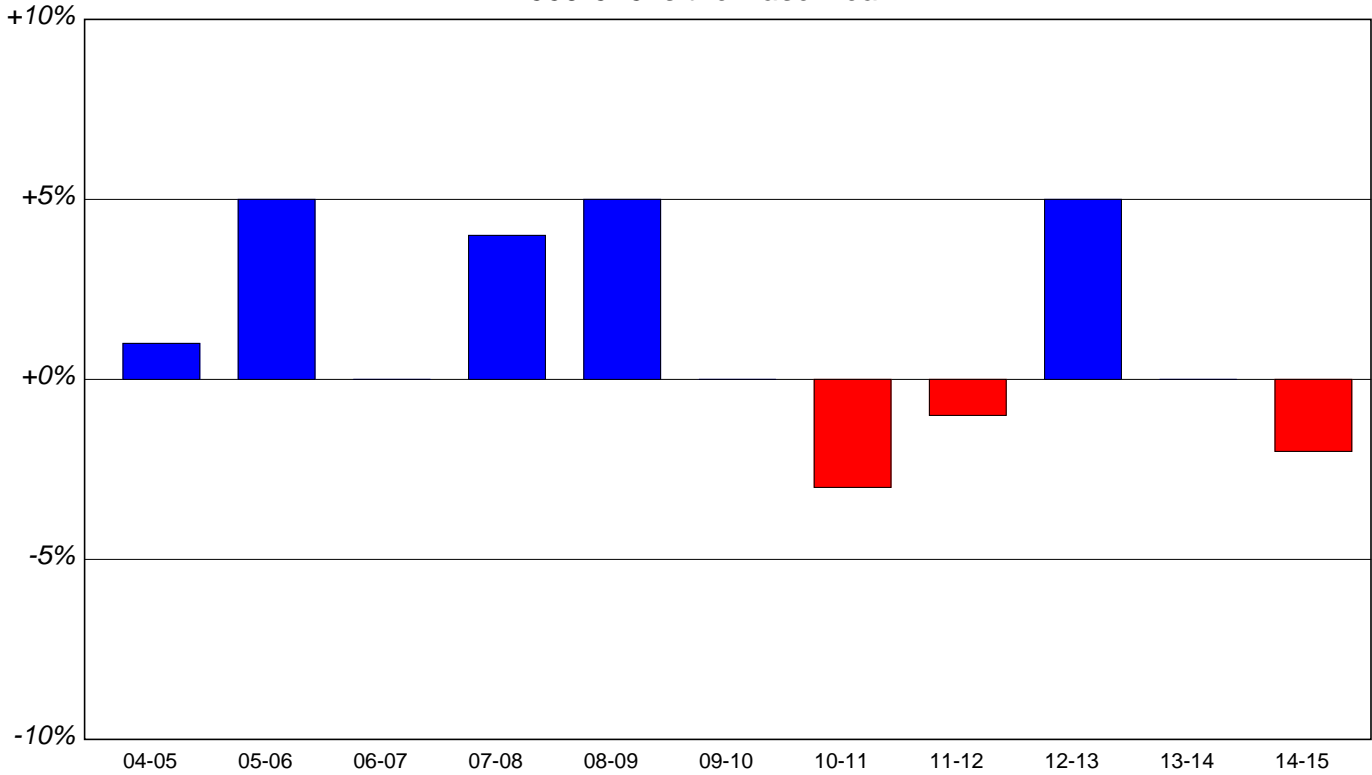
## Graph 10-A: 6-8 Enrollment 2004-2015

*Projection Method 3*



## Graph 10-B: % Change in 6-8 Enrollment

*2009-010 is the Base Year*



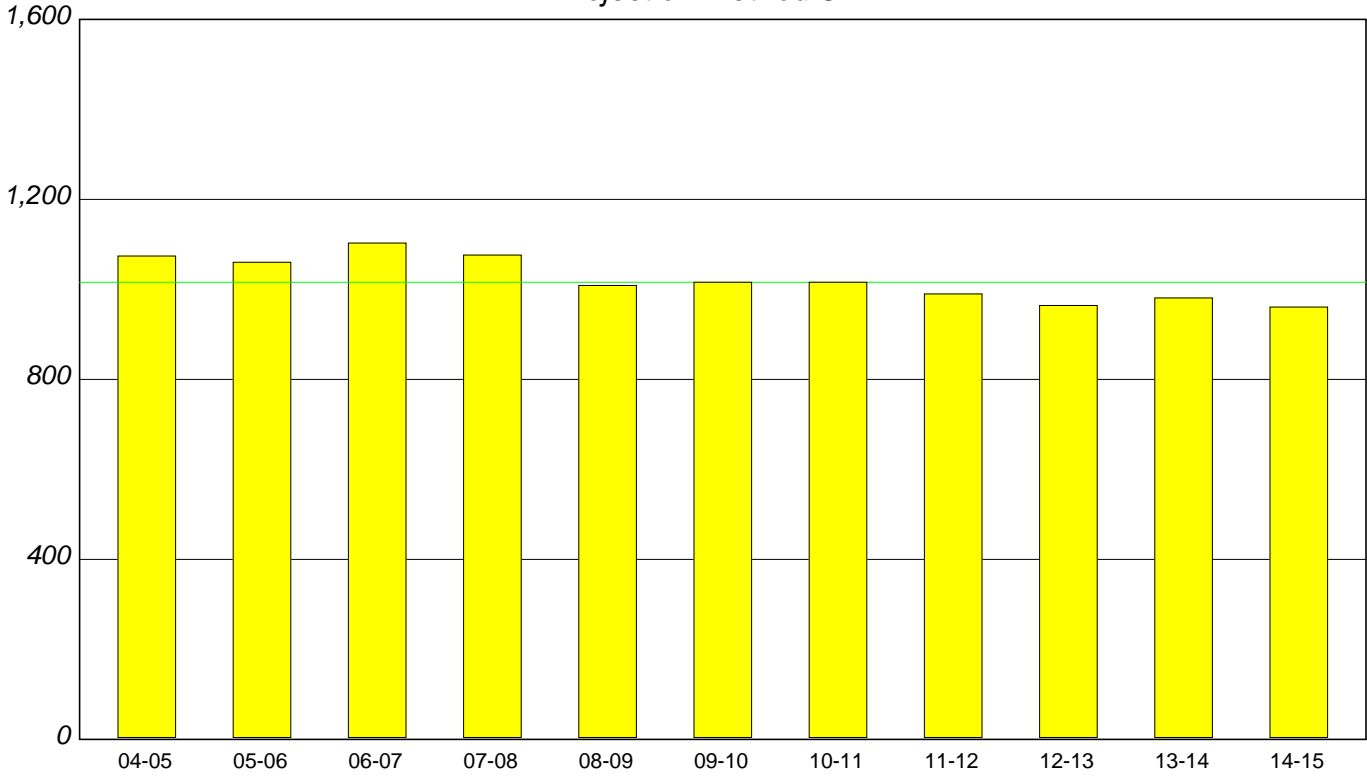
**NOTE:**

See Table 9 for specific enrollment numbers

# Tomah Area School District

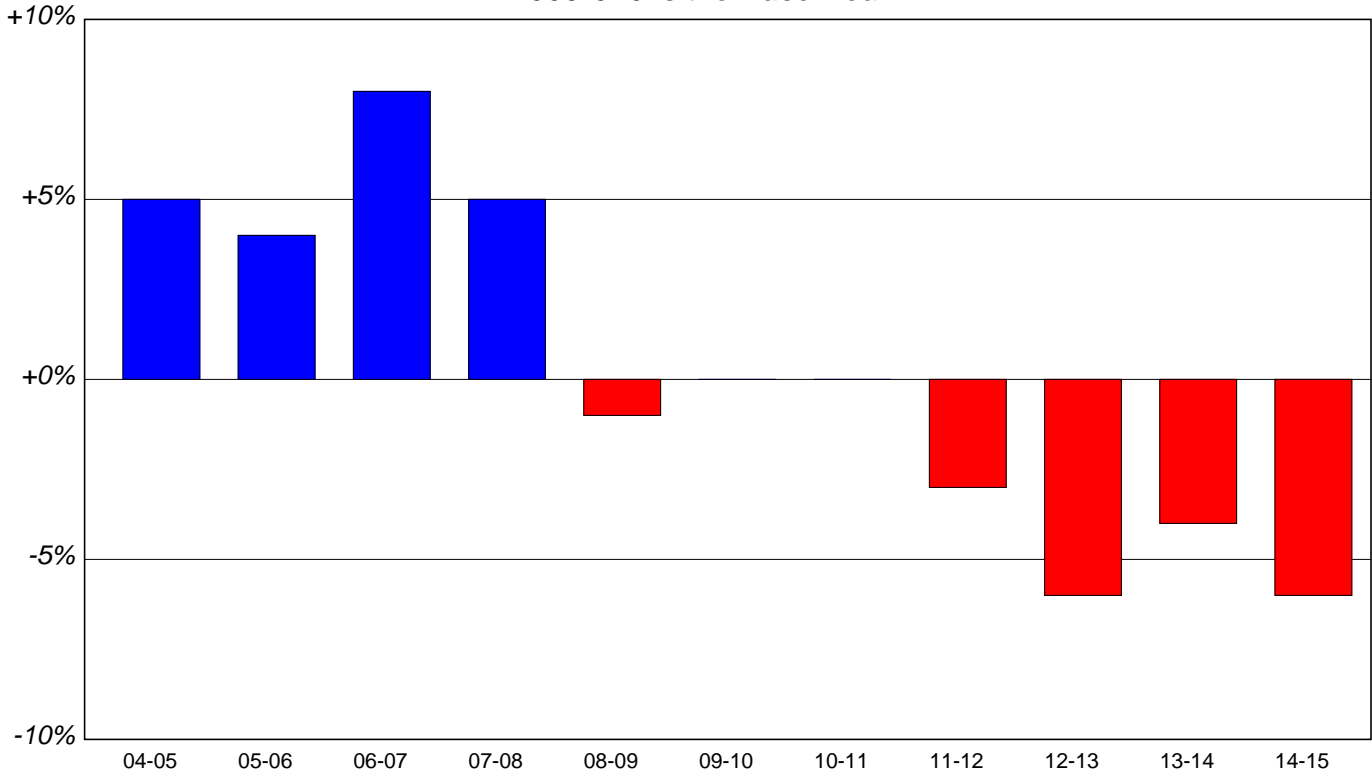
## Graph 11-A: 9-12 Enrollment 2004-2015

*Projection Method 3*



## Graph 11-B: % Change in 9-12 Enrollment

*2009-010 is the Base Year*



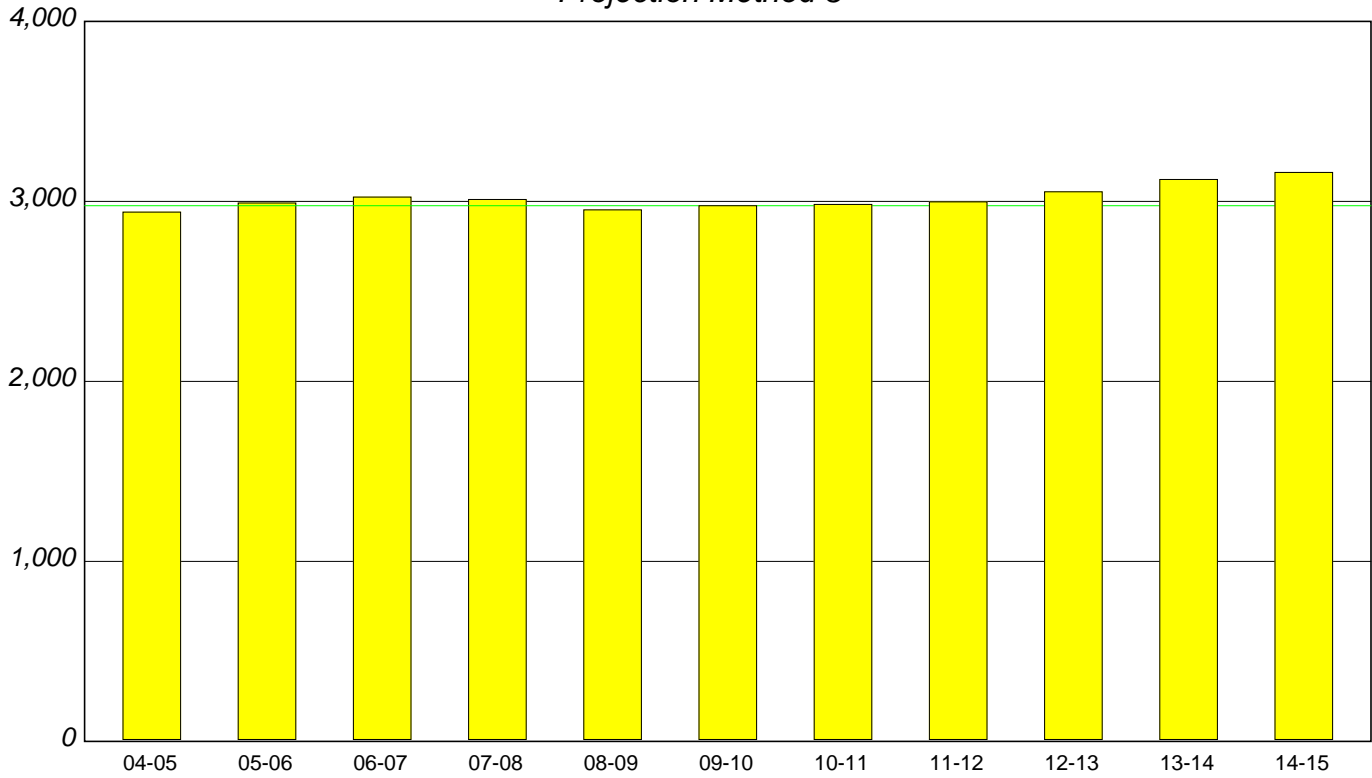
**NOTE:**

See Table 9 for specific enrollment numbers

# Tomah Area School District

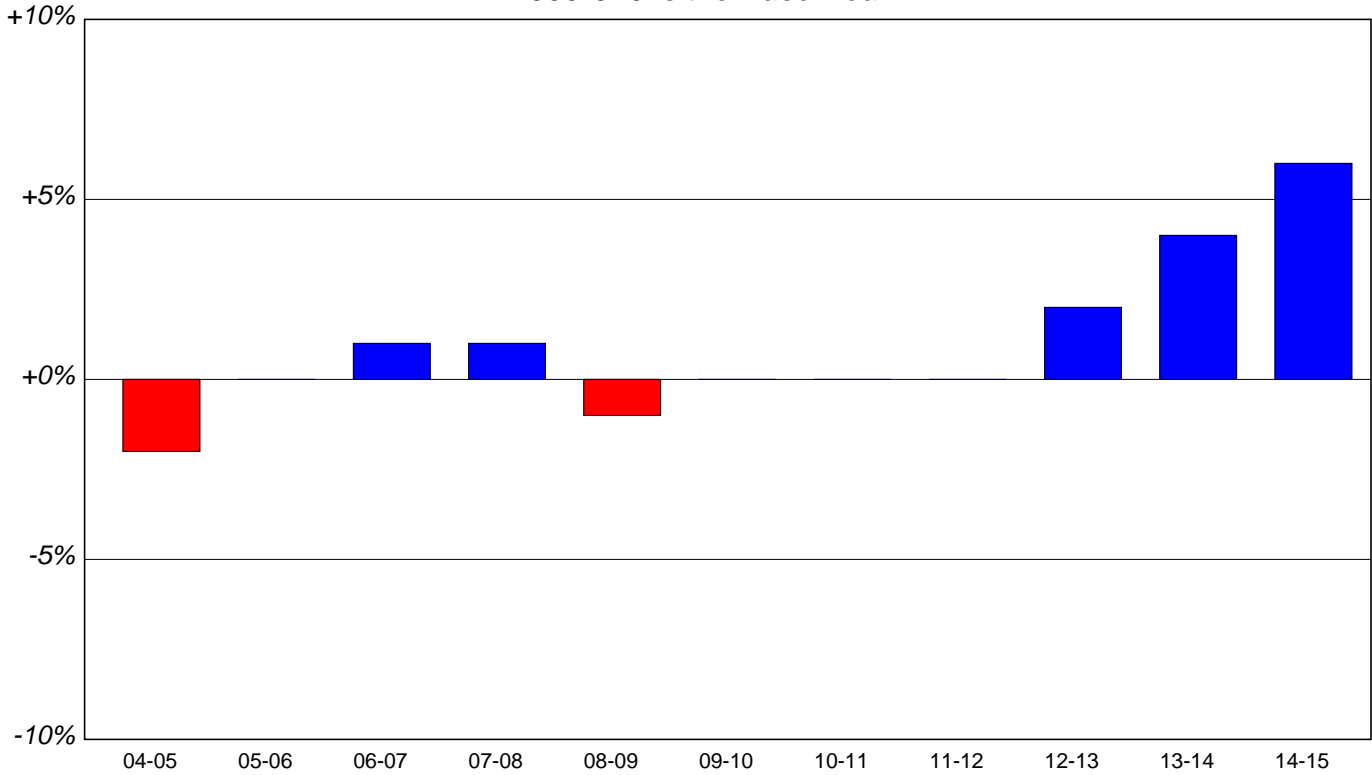
## Graph 12-A: K-12 Enrollment 2004-2015

*Projection Method 3*



## Graph 12-B: % Change in K-12 Enrollment

*2009-010 is the Base Year*

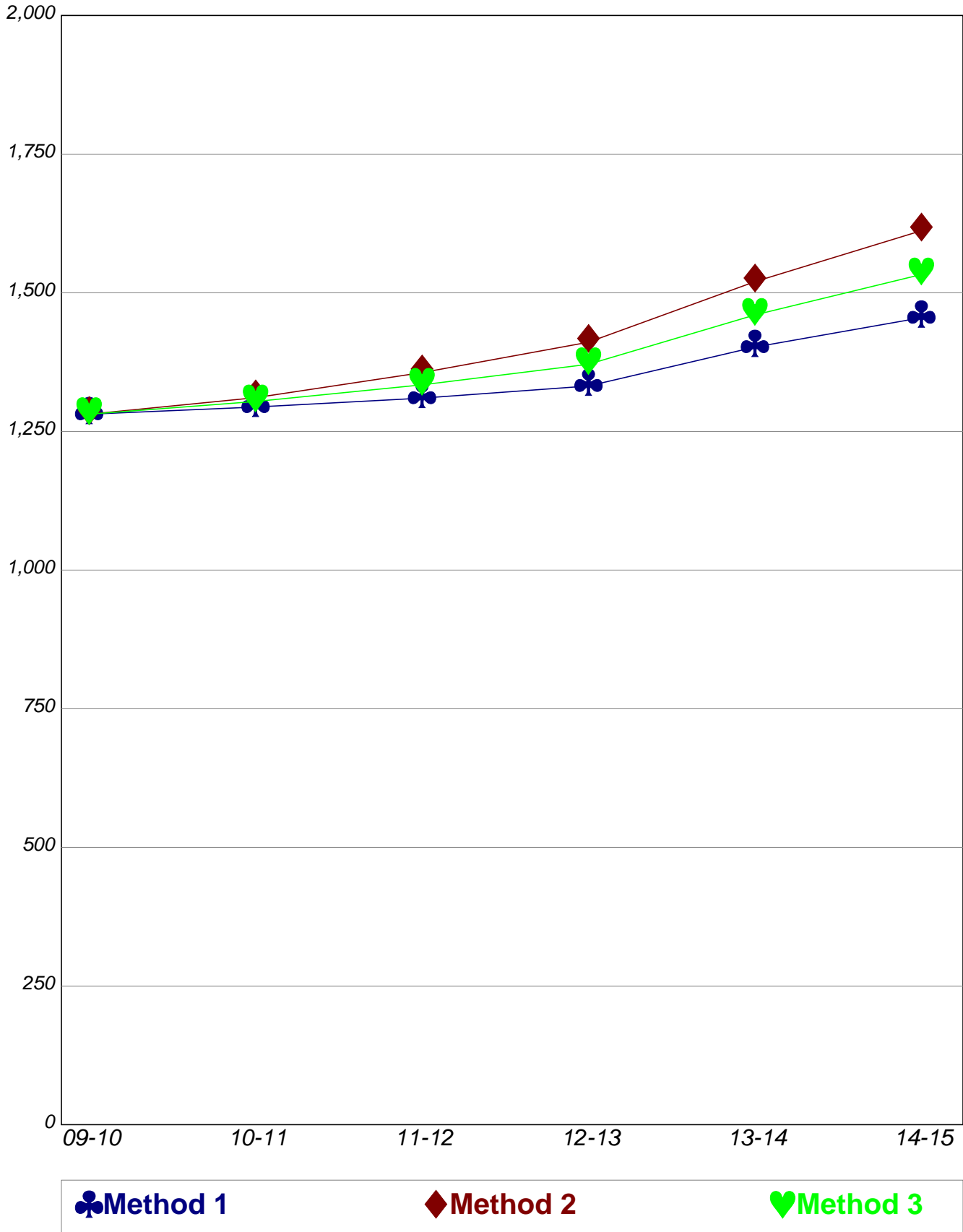


**NOTE:**

See Table 9 for specific enrollment numbers

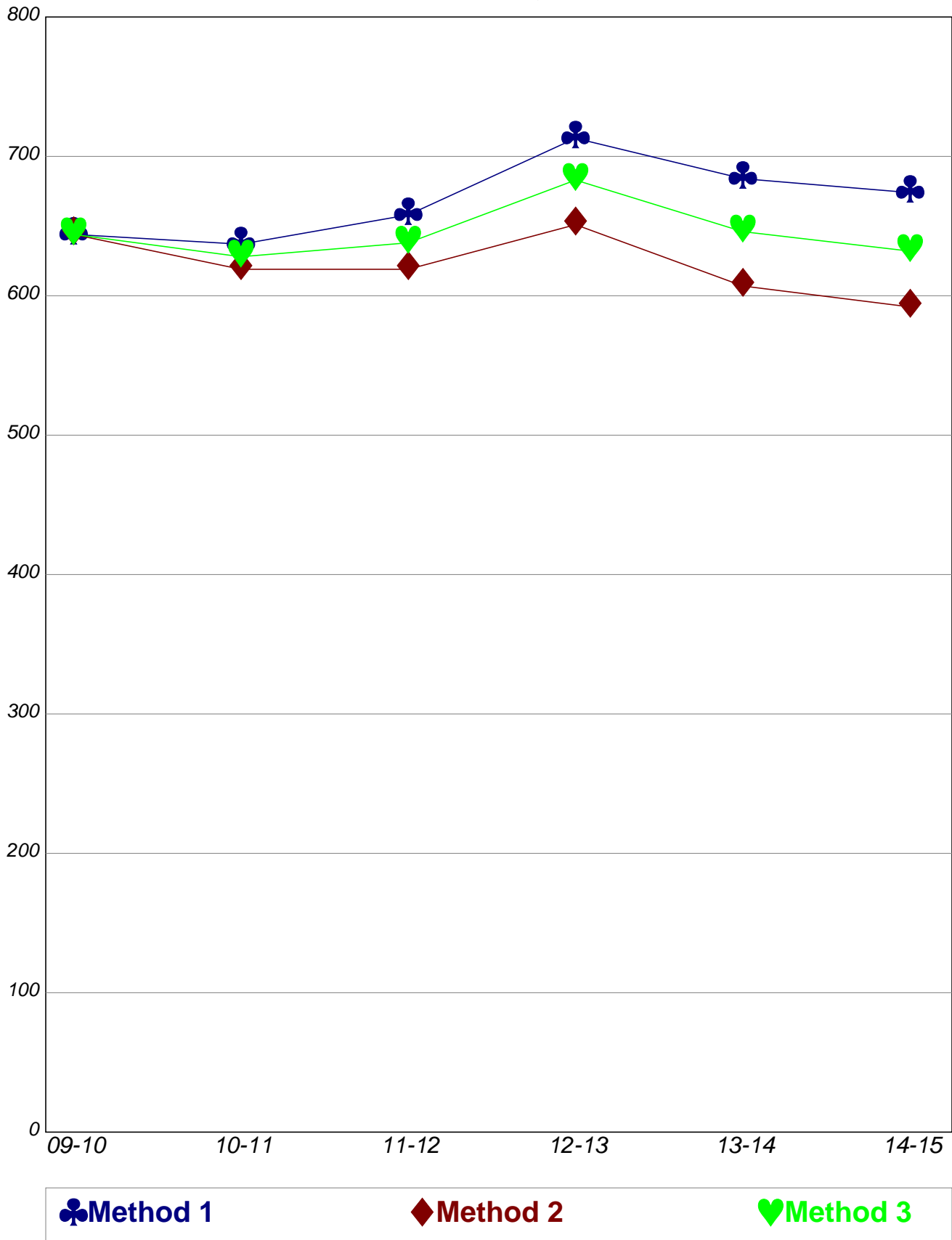
# Tomah Area School District

Graph 13  
K-5 Enrollment 2009-2014  
Comparison between projection methods



# Tomah Area School District

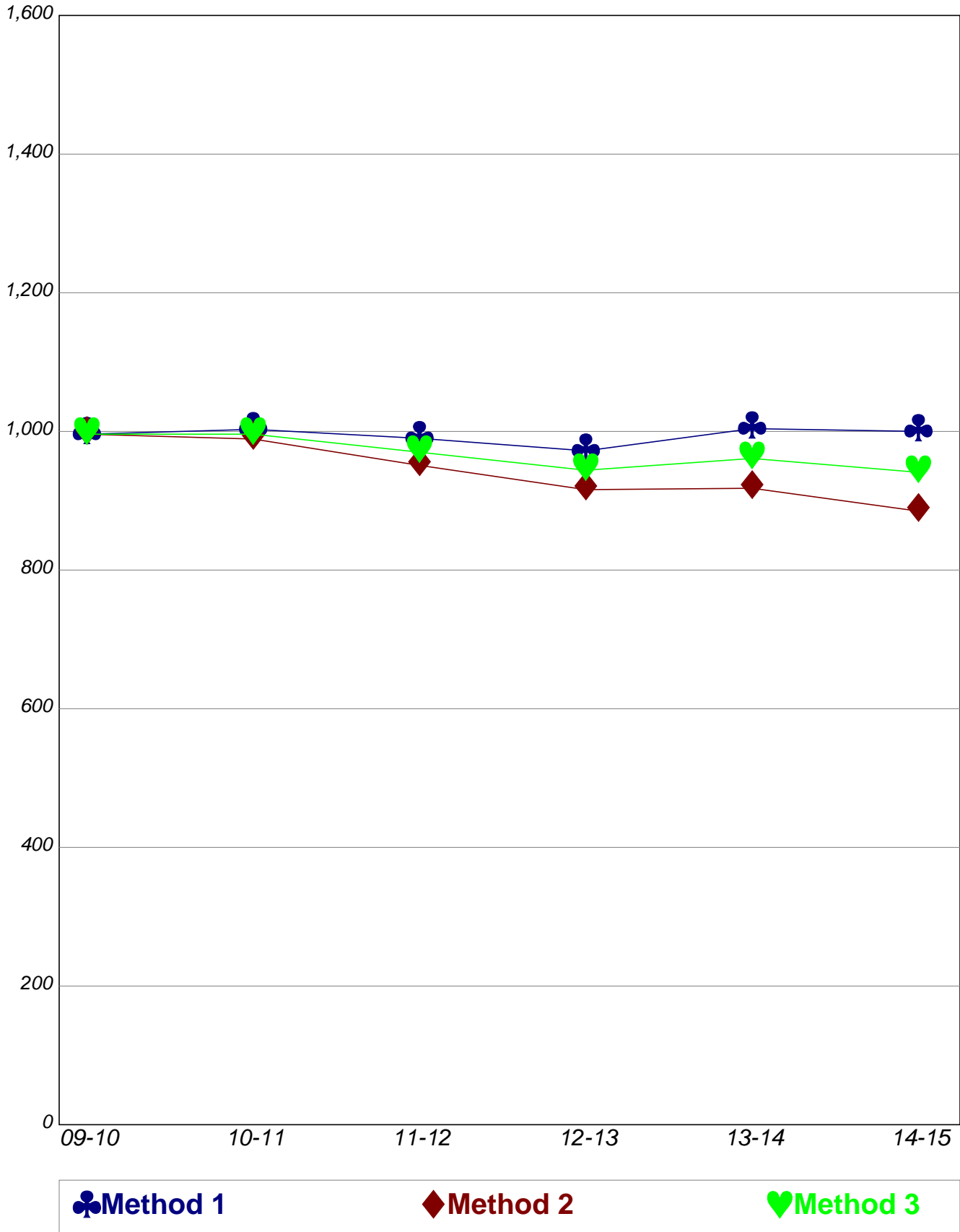
Graph 14  
6-8 Enrollment 2009-2014  
Comparison between projection methods





# Tomah Area School District

Graph 15  
9-12 Enrollment 2009-2014  
Comparison between projection methods

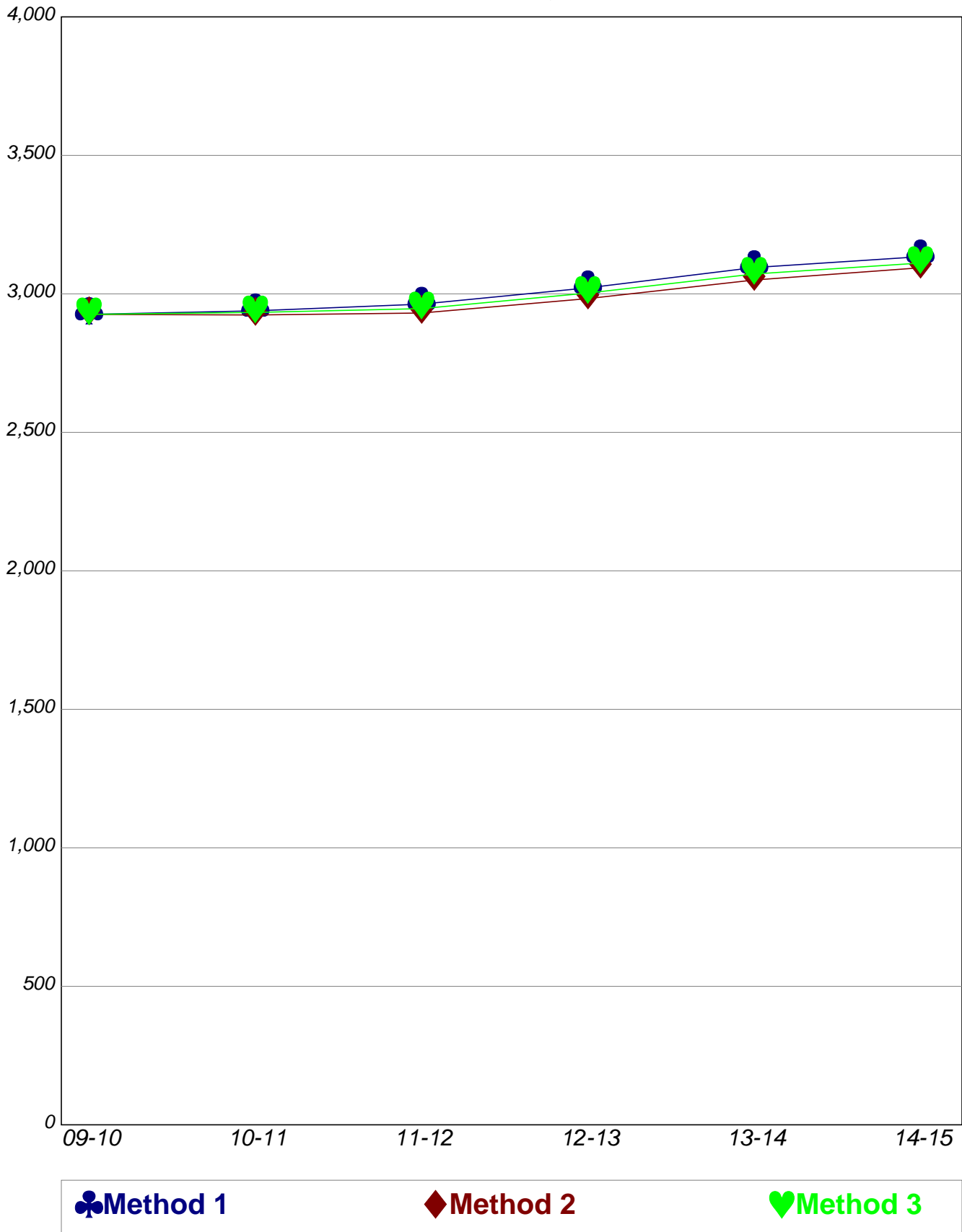


# Tomah Area School District

## Graph 16

### K-12 Enrollment 2009-2014

#### Comparison between projection methods



# Tomah Area School District

Table 11 - Teacher Requirements Projected Ten Years  
Teacher/Pupil Ratio = 1:22

GRADE	2010-11	2011-12	2012-13	2013-14	2014-15	2015-16	2016-17	2017-18	2018-19	2019-20
<b>K</b>	9.9	10.1	10.7	11.1	11.3	0.0	0.0	0.0	0.0	0.0
<b>1</b>	10.9	10.0	10.3	10.9	11.3	11.5	0.0	0.0	0.0	0.0
<b>2</b>	9.5	11.3	10.4	10.7	11.3	11.7	12.0	0.0	0.0	0.0
<b>3</b>	8.7	9.6	11.5	10.5	10.8	11.5	11.9	12.1	0.0	0.0
<b>4</b>	10.6	8.9	9.9	11.7	10.7	11.1	11.7	12.1	12.4	0.0
<b>5</b>	10.4	10.7	9.0	10.0	11.8	10.8	11.2	11.8	12.2	12.5
<b>6</b>	10.7	10.8	11.1	9.4	10.4	12.3	11.3	11.7	12.3	12.8
<b>7</b>	8.7	10.7	10.8	11.1	9.4	10.4	12.3	11.3	11.7	12.3
<b>8</b>	10.0	8.8	10.9	11.0	11.3	9.6	10.5	12.5	11.5	11.9
<b>9</b>	13.0	11.6	10.2	12.6	12.7	13.1	11.1	12.2	14.5	13.3
<b>10</b>	11.0	12.9	11.5	10.1	12.5	12.6	13.0	11.0	12.0	14.4
<b>11</b>	10.5	10.7	12.5	11.1	9.8	12.1	12.2	12.5	10.6	11.7
<b>12</b>	12.0	10.7	11.0	12.7	11.3	10.0	12.4	12.5	12.8	10.9

# Tomah Area School District

Table 12 - Teacher Requirements Projected Ten Years  
Teacher/Pupil Ratio = 1:24

GRADE	2010-11	2011-12	2012-13	2013-14	2014-15	2015-16	2016-17	2017-18	2018-19	2019-20
<b>K</b>	9.0	9.3	9.8	10.2	10.4	0.0	0.0	0.0	0.0	0.0
<b>1</b>	10.0	9.2	9.5	10.0	10.4	10.6	0.0	0.0	0.0	0.0
<b>2</b>	8.7	10.3	9.5	9.8	10.3	10.7	11.0	0.0	0.0	0.0
<b>3</b>	8.0	8.8	10.5	9.6	9.9	10.5	10.9	11.1	0.0	0.0
<b>4</b>	9.7	8.2	9.0	10.8	9.8	10.2	10.8	11.1	11.4	0.0
<b>5</b>	9.5	9.8	8.3	9.1	10.8	9.9	10.3	10.8	11.2	11.5
<b>6</b>	9.8	9.9	10.2	8.6	9.5	11.3	10.3	10.7	11.3	11.7
<b>7</b>	8.0	9.8	9.9	10.2	8.6	9.5	11.3	10.3	10.7	11.3
<b>8</b>	9.2	8.1	10.0	10.1	10.4	8.8	9.7	11.5	10.5	10.9
<b>9</b>	11.9	10.6	9.4	11.6	11.7	12.0	10.2	11.2	13.3	12.2
<b>10</b>	10.1	11.8	10.5	9.3	11.5	11.5	11.9	10.0	11.0	13.2
<b>11</b>	9.6	9.8	11.4	10.2	9.0	11.1	11.2	11.5	9.8	10.7
<b>12</b>	11.0	9.8	10.0	11.6	10.4	9.2	11.3	11.4	11.7	10.0

# Tomah Area School District

Table 13 - Teacher Requirements Projected Ten Years  
Teacher/Pupil Ratio = 1:26

GRADE	2010-11	2011-12	2012-13	2013-14	2014-15	2015-16	2016-17	2017-18	2018-19	2019-20
<b>K</b>	8.3	8.6	9.0	9.4	9.6	0.0	0.0	0.0	0.0	0.0
<b>1</b>	9.2	8.5	8.7	9.2	9.6	9.8	0.0	0.0	0.0	0.0
<b>2</b>	8.0	9.5	8.8	9.0	9.5	9.9	10.1	0.0	0.0	0.0
<b>3</b>	7.4	8.2	9.7	8.9	9.2	9.7	10.0	10.3	0.0	0.0
<b>4</b>	9.0	7.5	8.3	9.9	9.1	9.4	9.9	10.3	10.5	0.0
<b>5</b>	8.8	9.0	7.6	8.4	10.0	9.2	9.5	10.0	10.3	10.6
<b>6</b>	9.1	9.2	9.4	8.0	8.8	10.4	9.5	9.9	10.4	10.8
<b>7</b>	7.3	9.1	9.2	9.4	8.0	8.8	10.4	9.5	9.9	10.4
<b>8</b>	8.5	7.5	9.2	9.3	9.6	8.1	8.9	10.6	9.7	10.1
<b>9</b>	11.0	9.8	8.7	10.7	10.8	11.1	9.4	10.3	12.3	11.3
<b>10</b>	9.3	10.9	9.7	8.6	10.6	10.7	11.0	9.3	10.2	12.2
<b>11</b>	8.9	9.1	10.5	9.4	8.3	10.3	10.3	10.6	9.0	9.9
<b>12</b>	10.1	9.1	9.3	10.7	9.6	8.5	10.5	10.5	10.8	9.2

# Tomah Area School District

Table 14 - Teacher Requirements Projected Ten Years  
Teacher/Pupil Ratio = 1:28

GRADE	2010-11	2011-12	2012-13	2013-14	2014-15	2015-16	2016-17	2017-18	2018-19	2019-20
<b>K</b>	7.8	8.0	8.4	8.7	8.9	0.0	0.0	0.0	0.0	0.0
<b>1</b>	8.6	7.9	8.1	8.6	8.9	9.1	0.0	0.0	0.0	0.0
<b>2</b>	7.5	8.9	8.1	8.4	8.9	9.2	9.4	0.0	0.0	0.0
<b>3</b>	6.9	7.6	9.0	8.3	8.5	9.0	9.3	9.5	0.0	0.0
<b>4</b>	8.3	7.0	7.8	9.2	8.4	8.7	9.2	9.5	9.8	0.0
<b>5</b>	8.1	8.4	7.1	7.8	9.3	8.5	8.8	9.3	9.6	9.8
<b>6</b>	8.4	8.5	8.8	7.4	8.1	9.7	8.9	9.2	9.7	10.0
<b>7</b>	6.8	8.4	8.5	8.8	7.4	8.1	9.7	8.9	9.2	9.7
<b>8</b>	7.9	6.9	8.6	8.6	8.9	7.5	8.3	9.9	9.0	9.4
<b>9</b>	10.2	9.1	8.0	9.9	10.0	10.3	8.7	9.6	11.4	10.5
<b>10</b>	8.7	10.1	9.0	8.0	9.8	9.9	10.2	8.6	9.5	11.3
<b>11</b>	8.3	8.4	9.8	8.7	7.7	9.5	9.6	9.9	8.4	9.2
<b>12</b>	9.4	8.4	8.6	10.0	8.9	7.9	9.7	9.8	10.0	8.5

# Tomah Area School District

Table 15 - Teacher Requirements Projected Ten Years  
Teacher/Pupil Ratio = 1:30

GRADE	2010-11	2011-12	2012-13	2013-14	2014-15	2015-16	2016-17	2017-18	2018-19	2019-20
<b>K</b>	7.2	7.4	7.8	8.1	8.3	0.0	0.0	0.0	0.0	0.0
<b>1</b>	8.0	7.4	7.6	8.0	8.3	8.5	0.0	0.0	0.0	0.0
<b>2</b>	7.0	8.3	7.6	7.8	8.3	8.6	8.8	0.0	0.0	0.0
<b>3</b>	6.4	7.1	8.4	7.7	7.9	8.4	8.7	8.9	0.0	0.0
<b>4</b>	7.8	6.5	7.2	8.6	7.9	8.1	8.6	8.9	9.1	0.0
<b>5</b>	7.6	7.8	6.6	7.3	8.7	7.9	8.2	8.7	9.0	9.2
<b>6</b>	7.9	7.9	8.2	6.9	7.6	9.0	8.3	8.6	9.0	9.4
<b>7</b>	6.4	7.9	7.9	8.2	6.9	7.6	9.0	8.3	8.6	9.0
<b>8</b>	7.3	6.5	8.0	8.1	8.3	7.0	7.7	9.2	8.4	8.7
<b>9</b>	9.5	8.5	7.5	9.3	9.3	9.6	8.1	8.9	10.6	9.8
<b>10</b>	8.1	9.4	8.4	7.4	9.2	9.2	9.5	8.0	8.8	10.5
<b>11</b>	7.7	7.9	9.1	8.1	7.2	8.9	9.0	9.2	7.8	8.6
<b>12</b>	8.8	7.9	8.0	9.3	8.3	7.3	9.1	9.1	9.4	8.0

# Tomah Area School District

Table 16 - Teacher Requirements Projected Ten Years  
Teacher/Pupil Ratio = 1:32

GRADE	2010-11	2011-12	2012-13	2013-14	2014-15	2015-16	2016-17	2017-18	2018-19	2019-20
<b>K</b>	6.8	7.0	7.3	7.6	7.8	0.0	0.0	0.0	0.0	0.0
<b>1</b>	7.5	6.9	7.1	7.5	7.8	7.9	0.0	0.0	0.0	0.0
<b>2</b>	6.5	7.8	7.1	7.3	7.8	8.0	8.2	0.0	0.0	0.0
<b>3</b>	6.0	6.6	7.9	7.2	7.4	7.9	8.2	8.3	0.0	0.0
<b>4</b>	7.3	6.1	6.8	8.1	7.4	7.6	8.1	8.3	8.5	0.0
<b>5</b>	7.1	7.3	6.2	6.8	8.1	7.4	7.7	8.1	8.4	8.6
<b>6</b>	7.4	7.4	7.7	6.5	7.1	8.5	7.8	8.0	8.5	8.8
<b>7</b>	6.0	7.4	7.4	7.7	6.5	7.1	8.5	7.8	8.0	8.5
<b>8</b>	6.9	6.1	7.5	7.6	7.8	6.6	7.3	8.6	7.9	8.2
<b>9</b>	8.9	8.0	7.0	8.7	8.8	9.0	7.6	8.4	10.0	9.2
<b>10</b>	7.6	8.8	7.9	7.0	8.6	8.7	8.9	7.5	8.3	9.9
<b>11</b>	7.2	7.4	8.6	7.6	6.8	8.3	8.4	8.6	7.3	8.0
<b>12</b>	8.2	7.4	7.5	8.7	7.8	6.9	8.5	8.6	8.8	7.5



# Tomah Area School District

Table 17 - Accuracy Table  
Difference Between Actual and Projected 2009-10 Enrollment

Grade	Current Enrollment	Method 1 Projection	% Diff.	Method 2 Projection	% Diff.	Method 3 Projection	% Diff.
<b>K</b>	235	200	-14.91%	183	-21.94%	192	-18.43%
<b>1</b>	202	198	-1.92%	198	-1.84%	198	-1.88%
<b>2</b>	189	187	-1.27%	183	-3.40%	185	-2.34%
<b>3</b>	228	239	+4.61%	237	+4.07%	238	+4.34%
<b>4</b>	226	227	+0.65%	233	+3.10%	230	+1.87%
<b>5</b>	226	237	+5.03%	228	+1.00%	233	+3.02%
<b>6</b>	191	204	+6.74%	207	+8.55%	206	+7.65%
<b>7</b>	216	217	+0.40%	221	+2.53%	219	+1.47%
<b>8</b>	247	254	+2.80%	250	+1.32%	252	+2.06%
<b>9</b>	246	260	+5.55%	241	-2.07%	250	+1.74%
<b>10</b>	238	240	+0.74%	247	+3.97%	244	+2.35%
<b>11</b>	258	265	+2.81%	253	-1.97%	259	+0.42%
<b>12</b>	274	269	-1.74%	257	-6.14%	263	-3.94%
<b>K-5</b>	1,306	1,288	-1.38%	1,262	-3.37%	1,276	-2.30%
<b>6-8</b>	654	675	+3.21%	678	+3.67%	677	+3.52%
<b>9-12</b>	1,016	1,034	+1.77%	998	-1.77%	1,016	+0.00%
<b>K-12</b>	2,976	2,997	+0.71%	2,938	-1.28%	2,969	-0.24%