

**Tomah Area School
District**

Enrollment Projection
2008/09

Information Management Systems
6237 Arroyo Vista
Rockford MI 49341
(616)874-8963 (Fax & Phone)

WWW.ENROLLPRO.COM

Tomah Area School District

TABLE OF CONTENTS

1	Projection Interpretation Guide
1	Table of Area Births
2	Actual Enrollment
3	Projected Enrollment using Method 1
6	Enrollment Graphs - Method 1
10	Projected Enrollment using Method 2
13	Enrollment Graphs - Method 2
17	Projected Enrollment using Method 3
20	Enrollment Graphs - Method 3
24	Cross - Method Graphs
28	Projected Teacher/Pupil Ratios - 1/22 to 1/32
34	Accuracy Table

INFORMATION MANAGEMENT SYSTEMS Enrollment Projection Interpretation Guide

Information Management Systems has gone to great lengths to make our enrollment projection report as easy to understand as possible. However, being a primarily statistical report, it does require a certain amount of analysis. This guide is designed to assist you in that analysis. The entire enrollment projection report is explained page by page to help you understand the meaning and significance of each number.

We use three variations of the Cohort Survival Method to project enrollments. This method analyzes the survival ratios for your students and then projects those ratios into the future. The survival ratio compares how many students are in a particular grade this year against how many students were in the preceding grade the previous year. For example, if there are 100 first graders in 2000-01 and 113 second graders in 2001-02 then the survival ratio for that 2nd grade class is 113%. The manner in which each of the projection methods use the survival ratios is described below.

All of the students listed in grades K through 12 are projected in this fashion. Any grades listed in the report other than K-12, such as Prek, Special Ed, or Ungraded, are projected by looking at the survival trends within that grade, rather than the trend from the preceding grade. The unevenness of grade progression for these students prohibits the standard technique.

Page 1: County Births

This table shows the number of resident births for your district's county for the past eleven years. These numbers, obtained from your state's health department, are used to project what proportion of children born in your county become students at your schools. Because the department of health cannot compile birth statistics for a particular year until at least the middle of the next year, the current year's birth rate is an estimate. This number is based upon past births and national and local trends in the birth rate.

Table 1: Actual Enrollments

This may be the most important table in the projection package, as it shows the past enrollment upon which the rest of your report is based. The table has your district's enrollment for the past six years listed by grade. The number under the enrollment figure is the survival ratio for that grade in that year. Numbers above 100 (in blue) indicate an increase in enrollment from the previous grade/year, while numbers below 100 (in red) indicate a loss of enrollment.

When checking these numbers, be alert for extremely large variations in the ratios because they serve as indicators for trends in your district's enrollment, or errors in the enrollment numbers. The summary table at the bottom of this page, and most of the other pages, simply aggregates the table above it into groups corresponding with your district's grade/building configuration.

Projection Method 1

Projection method 1 uses the survival ratios for the past five years in a particular grade. It arrives at a mean value to use in projecting how many students in the previous grade the prior year will become students in that grade that year. This method is the most accurate for school districts that have not experienced major impacts on their district in recent years. The closing or opening of a private school, the addition of a preschool program, or re-zoning of your district are a few of the occurrences that may have affected your past enrollment, and in turn, your future enrollment projections. To find out which of the three projection methods might be most accurate for your schools, please refer to the accuracy table on the last page of this report.

Table 2: Projected Enrollment by Method 1

This table predicts what your enrollment will be up to five years into the future, grade by grade. The blue figures under the enrollment numbers are the multipliers that are used to represent the survival ratio that particular grade has shown in the past. Numbers far from 100 indicate that either a loss or a gain of enrollment has occurred, and care should be taken to determine what the cause of this fluctuation might be.

Table 3: Comparison by Method 1

This table summarizes the past two pages by showing past, present, and projected future enrollment. The small numbers indicate the percentage difference between that year's enrollment and the current year's, blue for enrollment above the current year's and red when below. The key numbers on this table are the percent changes for the grade configuration summaries for the future. These indicate the extent, as a percentage of this year's enrollment, to which your district will either lose (red) or gain (blue) enrollment.

Table 4: 10 Year Projections by Method 1

This table shows what enrollment will look like ten years into the future. You will notice that, starting six years into the future, some grades are omitted from the report. This is because birth rates, which are the base from which the projections work, are very difficult to project with any accuracy. Without birth data, Kindergarten enrollment becomes impossible to project six years from now, and each higher grade falls out the following year.

Although this gives only a partial glimpse of your enrollment ten years from now, we feel it is better to exclude some information than to possibly be misleading with inaccurate data.

Enrollment Graphs as projected by Method 1

The first set of charts, one for each grade grouping, depicts the information from the past three tables in graphic form. Each graph deals with one of your district's building levels. The last chart is usually reserved for total district enrollment. The upper chart on each page tracks your enrollment level, while the lower tracks the percentage difference between your current enrollment and the enrollment in that year.

Projection Method 2

The second method used to project the enrollment of your school district uses the survival ratio for only the current year to project enrollment. This method may be most accurate for your school if it has recently experienced a change in its enrollment trends. The closing of a private school in your district last year will affect your enrollment this year, and in years to come. Under these and similar circumstances, method 2 will have the best predictive power. Please refer to Table 17 on the last page of the report to determine which method was best able to predict this year's enrollment.

Table 5: Projected Enrollment by Method 2
This table predicts what your enrollment will be up to five years into the future, grade by grade. The blue figures under the enrollment numbers are the multipliers that are used to represent the survival ratio that particular grade has shown in the past. Numbers far from 100 indicate that either a loss or a gain has occurred, and care should be taken to determine what the cause of this fluctuation might be.

Table 6: Comparison by Method 2
This table summarizes the previous page with your historical information by showing past, present, and projected future enrollment. The small numbers indicate the percentage difference between that year's enrollment and the current year's. The key numbers on this table are the percent changes for the summary groups for the future. These indicate the extent, as a percentage of this year's enrollment, to which your district will either lose (red) or gain (blue) enrollment.

Table 7: 10 Year Projections by Method 2
This table shows what enrollment will look like ten years into the future. You will notice that, starting six years into the future, some grades are omitted from the report. This is because birth rates, which are the base from which the projections work, are very difficult to project with any accuracy. Without birth data, kindergarten enrollment becomes impossible to project six years from now, and each higher grade falls out the following year.

Although this gives only a partial glimpse of your enrollment ten years from now, we feel it is better to exclude some information than to possibly be misleading with inaccurate data.

Enrollment Graphs as projected by Method 2
The second set of graphs depicts the information from the past three tables in graphic form. Each graph deals with one of your district's building levels. The last chart is usually reserved for total district enrollment. The upper chart on each page tracks your enrollment level, while the lower tracks the percentage difference between your current enrollment and the enrollment in that year.

Projection method 3

This method uses the average arrived at by method 1 and combines that with the one year ratio used by method 2. The resulting ratio emphasizes current trends in your enrollment while tempering that with the trends of the past. This method will best suit districts that have had fluctuations in their enrollment due to temporary occurrences, but do not expect those occurrences to overwhelmingly impact future enrollment. As with the other methods, Table 17 shows which method has the best predictive power for your particular situation.

Table 8: Projected Enrollment by Method 3
This table predicts what your enrollment will be up to five years into the future, grade by grade. The blue figures under the enrollment numbers are the multipliers that are used to represent the survival ratio that particular grade has shown in the past. Numbers far from 100 indicate that either a loss or a gain has occurred, and care should be taken to determine what the cause of this fluctuation might be.

Table 9: Comparison by Method 3
This table summarizes the previous page with your historical information by showing past, present, and projected future enrollment. The small numbers indicate the percentage difference between that year's enrollment and the current year's. The key numbers on this table are the percent changes for the summary groups for the future. These indicate the extent, as a percentage of this year's enrollment, to which your district will either lose (red numbers) or gain (blue numbers) enrollment.

Table 10: 10 Year Projections by Method 3
This table shows what enrollment will look like ten years into the future. You will notice that, starting six years into the future, some grades are omitted from the report. This is because birth rates, which are the base from which the projections work, are very difficult to project with any accuracy. Without birth data, kindergarten enrollment becomes impossible to project six years from now, and each higher grade falls out the next year.

Although this gives only a partial glimpse of your enrollment ten years from now, we feel it is better to exclude some information than to possibly be misleading with inaccurate data.

Enrollment graphs as projected by Method 3
The third method graphs depict the information from the past three tables in graphic form. Each graph deals with one of your district's building levels. The last chart is usually reserved for total district enrollment. The upper chart on each page tracks your enrollment level, while the lower tracks the percentage difference between your current enrollment and the enrollment in that year.

Cross – Method Charts
These charts (one for each grade grouping) look at your projected enrollment across the three projection methods. Each chart begins with your current enrollment with a separate line for each method tracing your projection out five years into the future. When all three lines stay close together, your projected enrollment does not significantly vary across the different projection methods.

However, when the three lines diverge, the three methods are projecting relatively different enrollments. Care should be taken in choosing the correct method on which to rely.

Tables 11-16: Teacher Projections
These six tables use projection Method 1, as the most conservative of the three methods, to forecast teacher needs for the next ten years. The tables are arranged according to selected Teacher: Pupil ratios (1:22 thru 1:32). As with the ten year enrollment projections, lower grades fall out of the system in later years due to projection limitations.

Table 17: Method Accuracy
This table is used to show which of the three projections methods has the best predictive power for your district. This is done by creating a projection of THIS YEAR'S enrollment using past data and then comparing it to this year's actual enrollment. The method showing the smallest total (K-12) error should have the best ability to predict what your future enrollment will be.

As in other tables, projections below the current year's level are shown in red, and those above are shown in blue.

Tomah Area School District

Births for Monroe County

<u>YEAR</u>	<u>BIRTHS</u>
1998	549
1999	510
2000	602
2001	593
2002	559
2003	624
2004	587
2005	615
2006	633
2007	643
2008	662

Tomah Area School District

Table 1 - Actual Enrollments

GRADE	2003-04	2004-05	2005-06	2006-07	2007-08	2008-09
K	182	209	208	229	178	195
1	183	177	214	211	231	181
2	208	188	189	217	218	233
3	192	214	195	192	222	222
4	205	203	220	194	197	233
5	205	215	214	220	202	193
6	225	226	214	225	243	217
7	211	234	229	211	220	248
8	249	201	248	222	223	222
9	277	293	248	288	266	242
10	263	272	288	240	285	272
11	267	251	275	280	237	265
12	251	258	249	295	288	230

K-5	1,175	1,206	1,240	1,263	1,248	1,257
6-8	685	661	691	658	686	687
9-12	1,058	1,074	1,060	1,103	1,076	1,009
K-12	2,918	2,941	2,991	3,024	3,010	2,953

Tomah Area School District

Table 2 - Enrollment Projected Five Years
Method 1

GRADE	2009-10	2010-11	2011-12	2012-13	2013-14
K	208	218	224	228	235
1	196	210	220	226	230
2	186	202	216	227	233
3	239	191	207	221	233
4	229	246	197	213	228
5	239	235	252	202	218
6	206	255	250	269	215
7	219	208	257	252	271
8	250	221	210	259	254
9	260	293	259	246	303
10	239	257	290	256	243
11	264	232	250	282	249
12	267	266	233	252	284
K-5	1,297	1,302	1,316	1,317	1,377
6-8	675	684	717	780	740
9-12	1,030	1,048	1,032	1,036	1,079
K-12	3,002	3,034	3,065	3,133	3,196

Tomah Area School District

Table 3 - Comparison of Past and Projected Enrollments
Method 1

GRADE	2003-04	2004-05	2005-06	2006-07	2007-08	2008-09	2009-10	2010-11	2011-12	2012-13	2013-14
K	182	209	208	229	178	195	208	218	224	228	235
	+7.18%	+6.67%	+17.44%	-8.72%	+0.00%	+6.67%	+11.79%	+14.87%	+16.92%	+20.51%	
1	183	177	214	211	231	181	196	210	220	226	230
	-2.21%	+18.23%	+16.57%	+27.62%	+0.00%	+8.29%	+16.02%	+21.55%	+24.86%	+27.07%	
2	208	188	189	217	218	233	186	202	216	227	233
	-10.73%	-18.88%	-6.87%	-6.44%	+0.00%	-20.17%	-13.30%	-7.30%	-2.58%	+0.00%	
3	192	214	195	192	222	222	239	191	207	221	233
	-3.60%	-12.16%	-13.51%	+0.00%	+7.66%	-13.96%	-6.76%	-0.45%	+4.95%		
4	205	203	220	194	197	233	229	246	197	213	228
	-12.02%	-5.58%	-16.74%	-15.45%	+0.00%	-1.72%	+5.58%	-15.45%	-8.58%	-2.15%	
5	205	215	214	220	202	193	239	235	252	202	218
	+6.22%	+11.40%	+10.88%	+13.99%	+4.66%	+0.00%	+23.83%	+21.76%	+30.57%	+4.66%	+12.95%
6	225	226	214	225	243	217	206	255	250	269	215
	+3.69%	-1.38%	+3.69%	+11.98%	+0.00%	-5.07%	+17.51%	+15.21%	+23.96%	-0.92%	
7	211	234	229	211	220	248	219	208	257	252	271
	-14.92%	-7.66%	-11.29%	-11.29%	+0.00%	-11.69%	-16.13%	+3.63%	+1.61%	+9.27%	
8	249	201	248	222	223	222	250	221	210	259	254
	+12.16%	-9.46%	+11.71%	+0.00%	+0.45%	+0.00%	+12.61%	-0.45%	-5.41%	+16.67%	+14.41%
9	277	293	248	288	266	242	260	293	259	246	303
	+14.46%	+21.07%	+2.48%	+19.01%	+9.92%	+0.00%	+7.44%	+21.07%	+7.02%	+1.65%	+25.21%
10	263	272	288	240	285	272	239	257	290	256	243
	-3.31%	+0.00%	+5.88%	-11.76%	+4.78%	+0.00%	-12.13%	-5.51%	+6.62%	-5.88%	-10.66%
11	267	251	275	280	237	265	264	232	250	282	249
	+0.75%	-5.28%	+3.77%	+5.66%	-10.57%	+0.00%	-0.38%	-12.45%	-5.66%	+6.42%	-6.04%
12	251	258	249	295	288	230	267	266	233	252	284
	+9.13%	+12.17%	+28.26%	+25.22%	+0.00%	+16.09%	+15.65%	+1.30%	+9.57%	+23.48%	
K-5	1,175	1,206	1,240	1,248	1,257	1,297	1,302	1,316	1,317	1,377	
	-6.52%	-4.06%	-1.35%	+0.48%	-0.72%	+3.18%	+3.58%	+4.69%	+4.77%	+9.55%	
6-8	685	661	691	658	686	675	684	717	780	740	
	-0.29%	-3.78%	+0.58%	-4.22%	-0.15%	-1.75%	-0.44%	+4.37%	+13.54%	+7.71%	
9-12	1,058	1,074	1,060	1,103	1,076	1,030	1,048	1,032	1,036	1,079	
	+4.86%	+6.44%	+5.05%	+9.32%	+6.64%	+2.08%	+3.87%	+2.28%	+2.68%	+6.94%	
K-12	2,918	2,941	2,991	3,024	3,010	2,953	3,002	3,034	3,065	3,133	3,196
	-1.19%	-0.41%	+1.29%	+2.40%	+1.93%	+0.00%	+1.66%	+2.74%	+3.79%	+6.10%	+8.23%

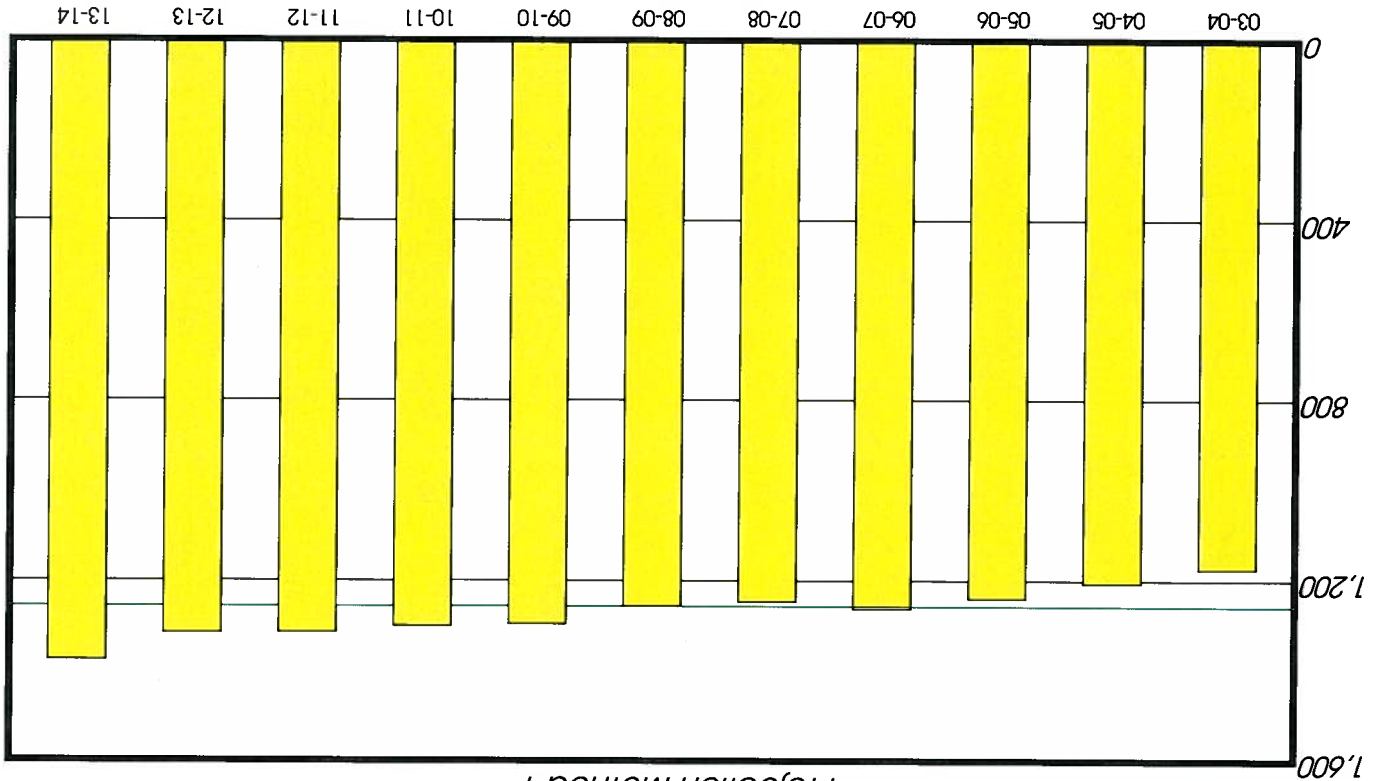
Tomah Area School District

Table 4 - Enrollment Projected Ten Years
Method 1

GRADE	2009-10	2010-11	2011-12	2012-13	2013-14	2014-15	2015-16	2016-17	2017-18	2018-19
K	208	218	224	228	235	0	0	0	0	0
1	196	210	220	226	230	237	0	0	0	0
2	186	202	216	227	233	237	244	0	0	0
3	239	191	207	221	233	239	243	250	0	0
4	229	246	197	213	228	240	246	251	258	0
5	239	235	252	202	218	234	246	252	257	264
6	206	255	250	269	215	232	249	262	269	274
7	219	208	257	252	271	217	234	251	264	271
8	250	221	210	259	254	274	219	236	253	267
9	260	293	259	246	303	297	321	256	276	296
10	239	257	290	256	243	300	294	317	253	273
11	264	232	250	282	249	236	291	285	308	246
12	267	266	233	252	284	250	237	293	287	310

Tomah Area School District

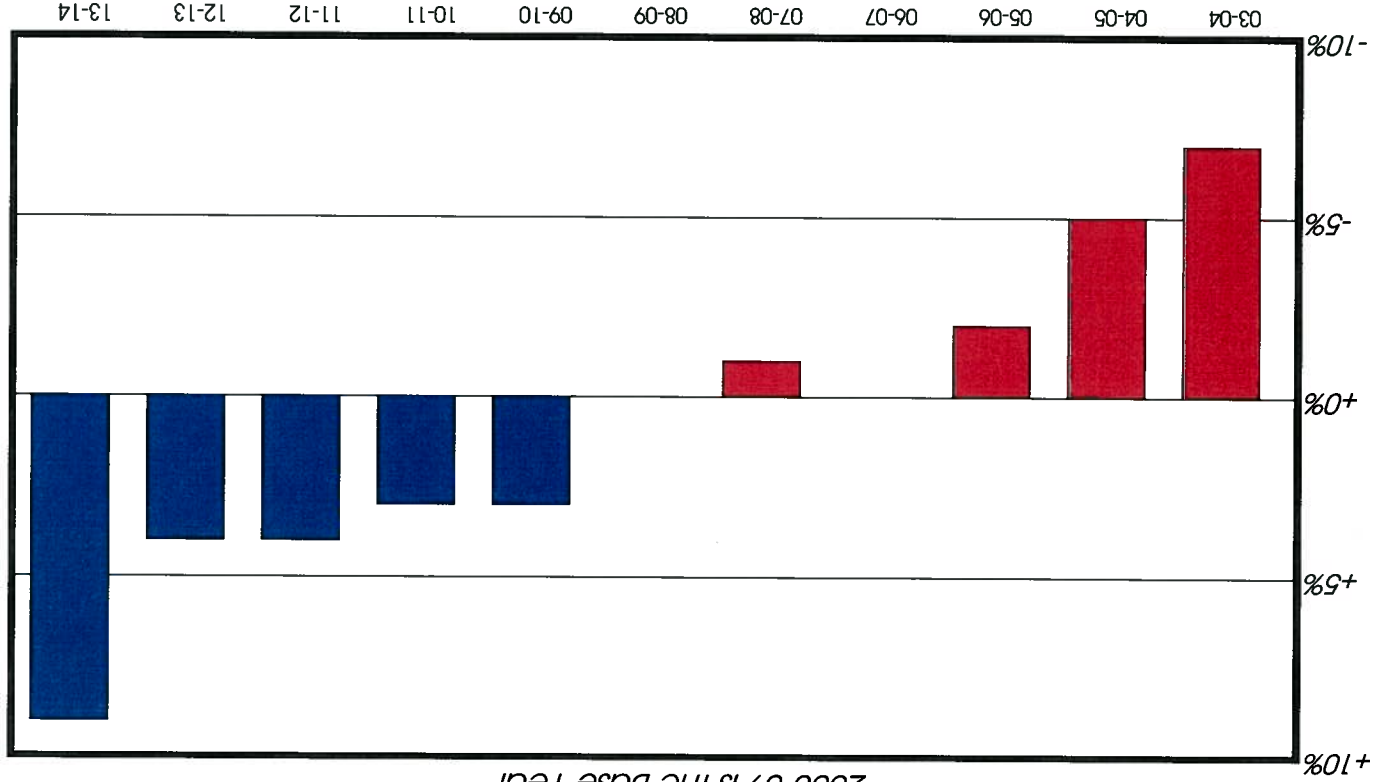
Graph 1-A: K-5 Enrollment 2003-2014



Projection Method 1

Graph 1-B: % Change in K-5 Enrollment

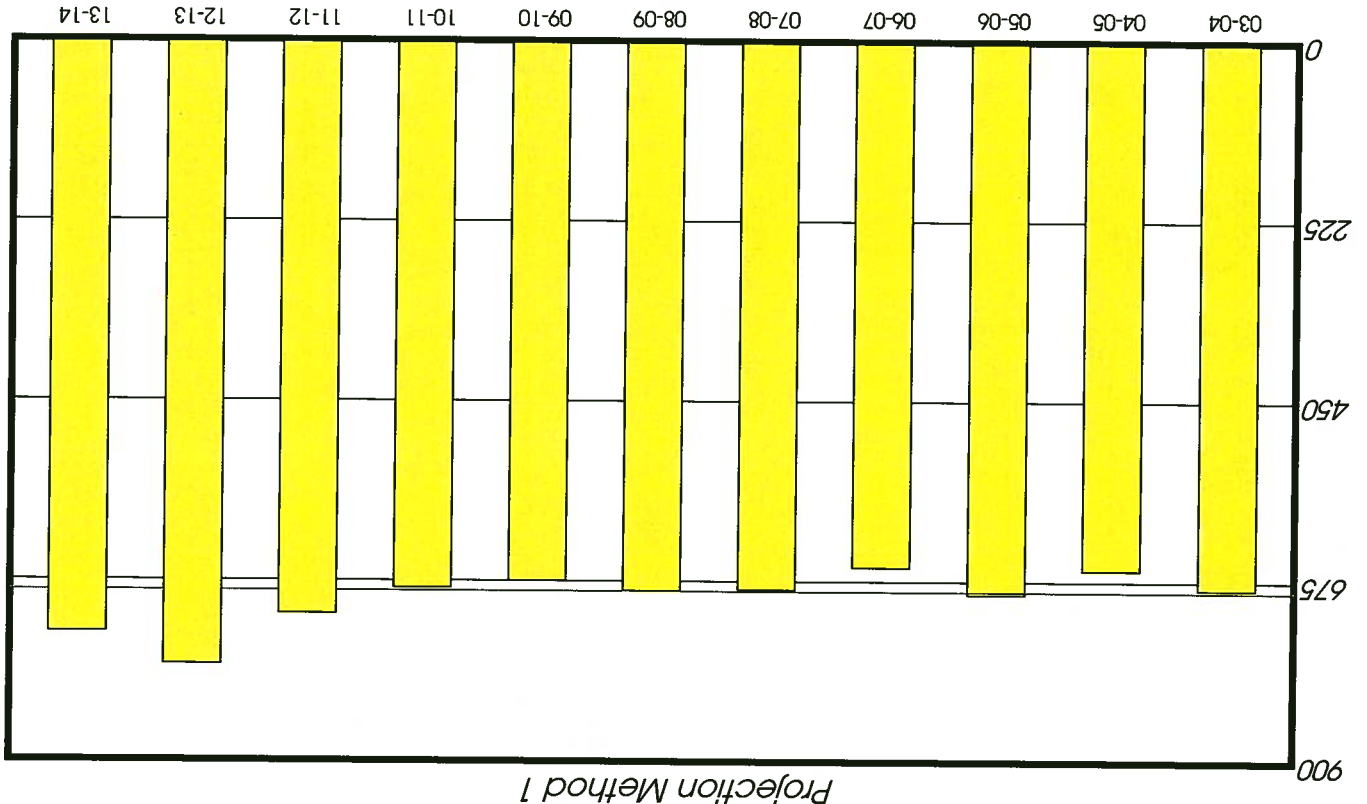
2008-09 is the Base Year



NOTE:
See Table 3 for specific enrollment numbers

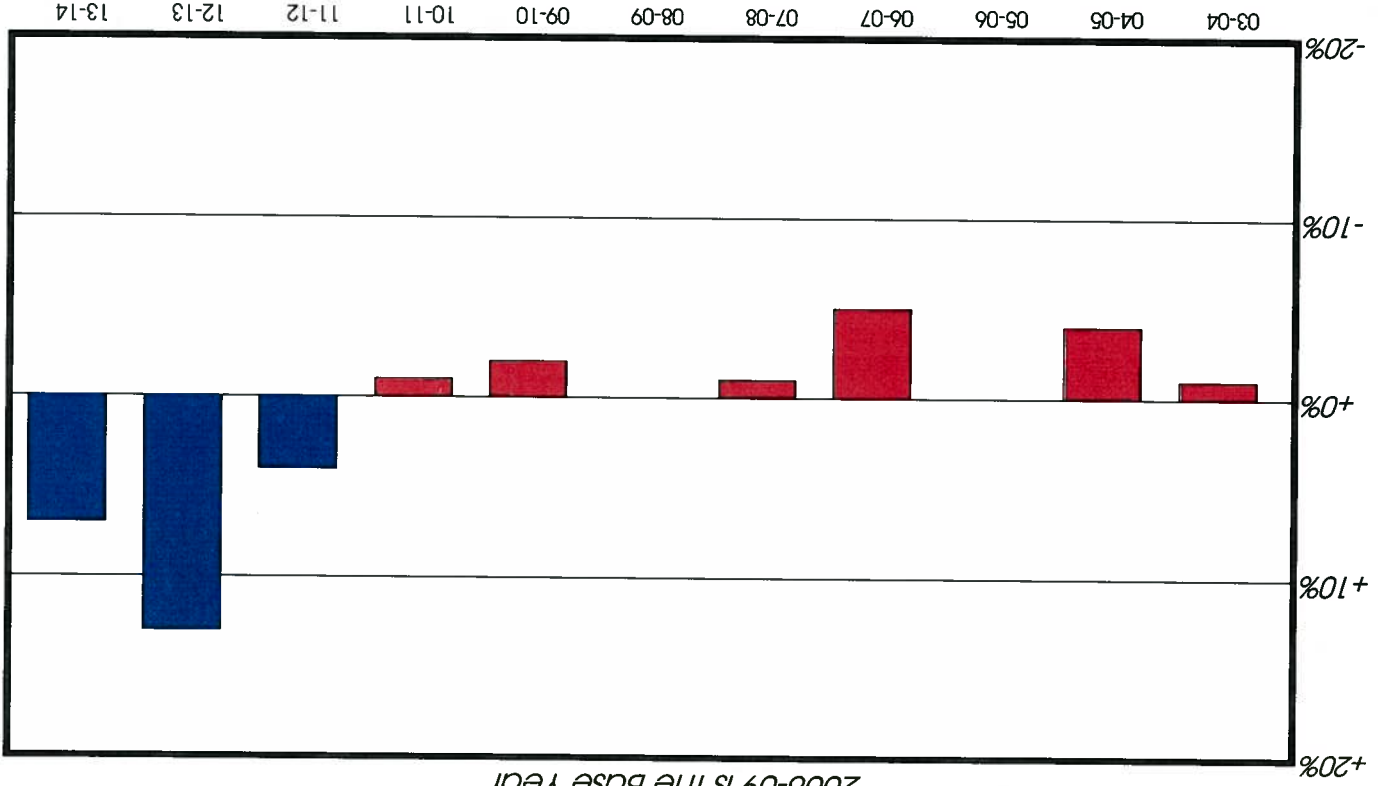
Tomah Area School District

Graph 2-A: 6-8 Enrollment 2003-2014



Graph 2-B: % Change in 6-8 Enrollment

2008-09 is the Base Year

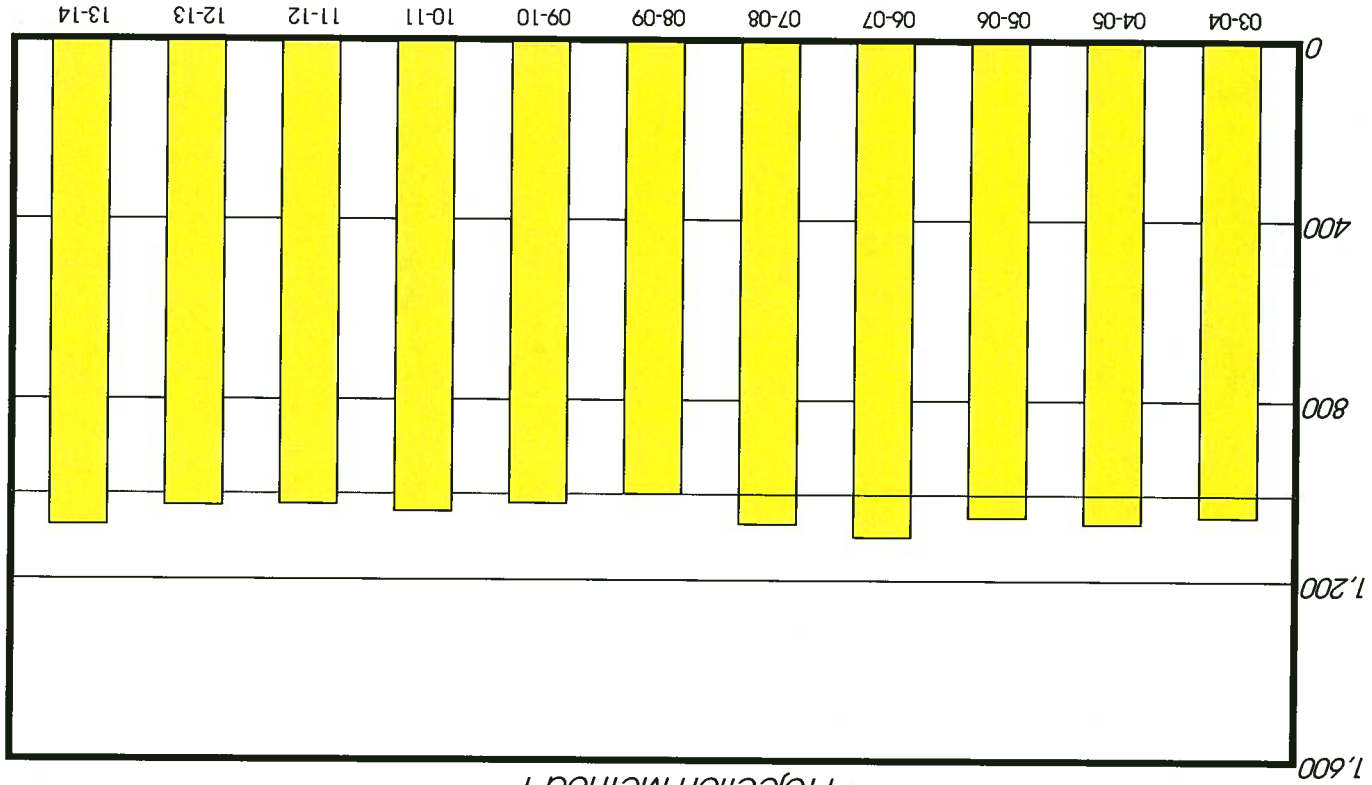


See Table 3 for specific enrollment numbers

NOTE:

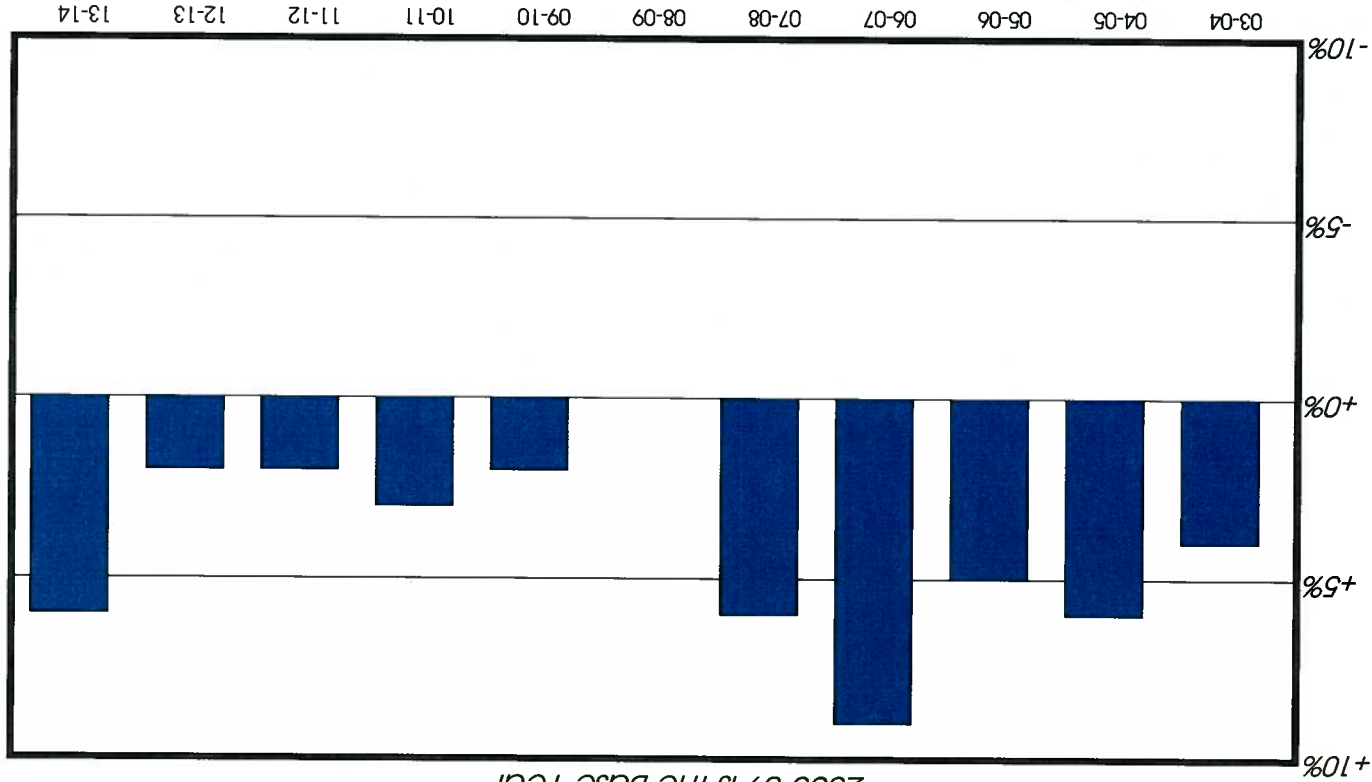
Tomah Area School District

Graph 3-A: 9-12 Enrollment 2003-2014



Graph 3-B: % Change in 9-12 Enrollment

2008-09 is the Base Year

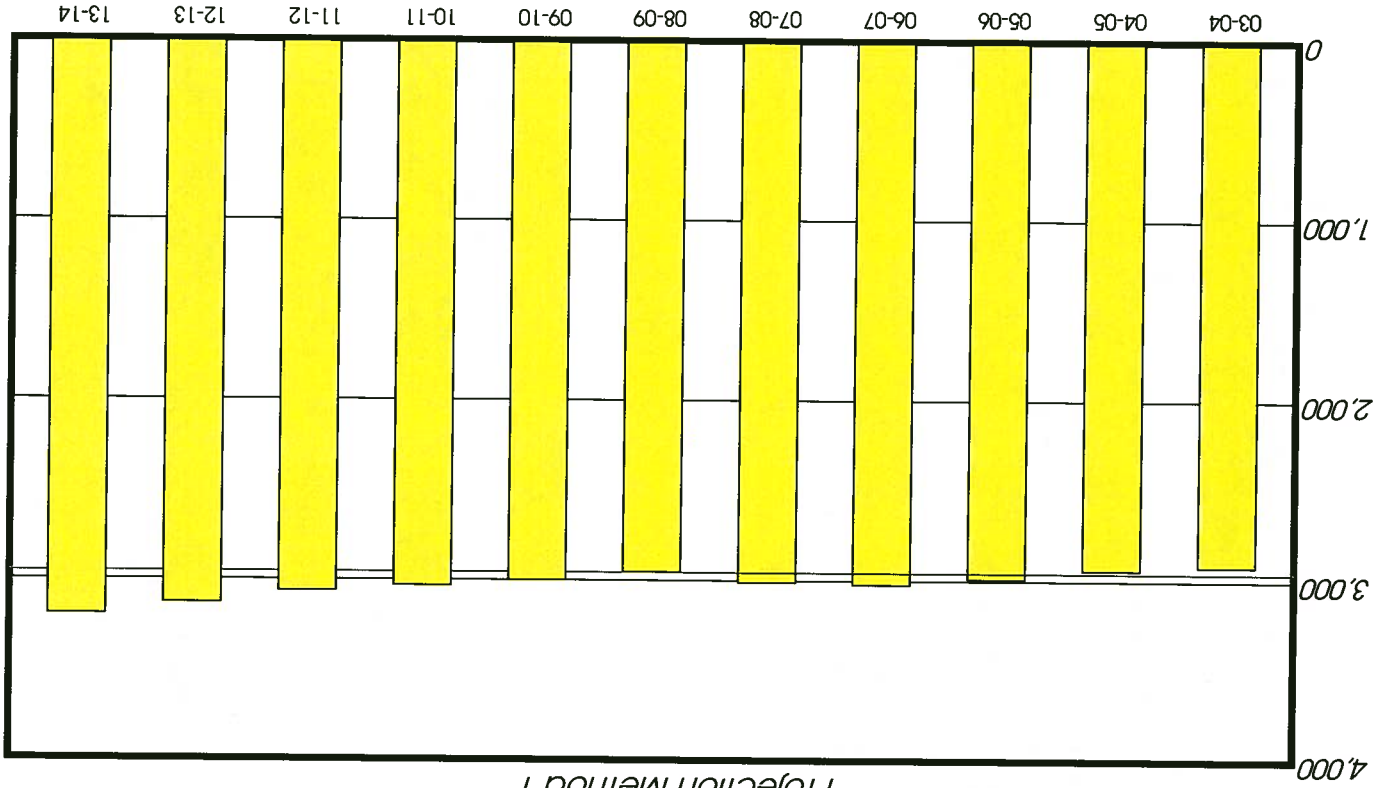


See Table 3 for specific enrollment numbers

NOTE:

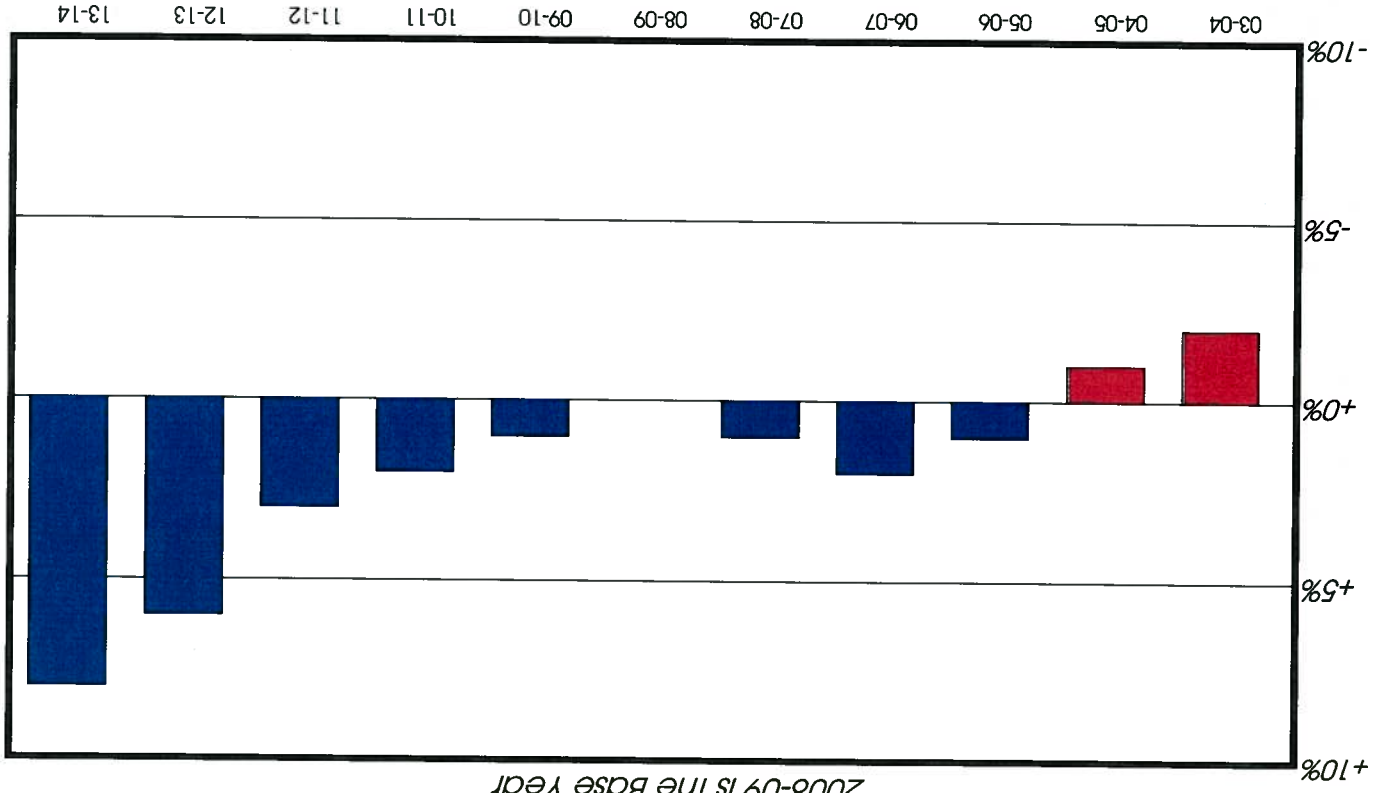
Tomah Area School District

Graph 4-A: K-12 Enrollment 2003-2014



Projection Method 1

Graph 4-B: % Change in K-12 Enrollment



2008-09 is the Base Year

NOTE:

See Table 3 for specific enrollment numbers

Tomah Area School District

Table 5 - Enrollment Projected Five Years
Method 2

GRADE	2009-10	2010-11	2011-12	2012-13	2013-14
K	183	192	198	201	207
1	198	186	195	201	204
2	183	200	188	197	203
3	237	186	204	191	201
4	233	249	195	214	200
5	228	228	244	191	210
6	207	245	245	262	205
7	221	211	250	250	267
8	250	223	213	252	252
9	241	271	242	231	273
10	247	246	277	247	236
11	253	230	229	258	230
12	257	246	223	222	250

K-5	1,262	1,241	1,224	1,195	1,225
6-8	678	679	708	764	724
9-12	998	993	971	958	989
K-12	2,938	2,913	2,903	2,917	2,938

Tomah Area School District

Table 6 - Comparison of Past and Projected Enrollments Method 2

GRADE	2003-04	2004-05	2005-06	2006-07	2007-08	2008-09	2009-10	2010-11	2011-12	2012-13	2013-14
K	182	209	208	229	178	195	183	192	198	201	207
1	183	177	214	211	231	181	198	186	195	201	204
2	208	188	189	217	218	233	183	200	188	197	203
3	192	214	195	192	222	222	237	186	204	191	201
4	205	203	220	194	197	233	233	249	195	214	200
5	205	215	214	220	202	193	228	228	244	191	210
6	225	226	214	225	243	217	207	245	245	262	205
7	211	234	229	211	220	248	221	211	250	250	267
8	249	201	248	222	223	222	250	223	213	252	252
9	277	293	248	288	266	242	241	271	242	231	273
10	263	272	288	240	285	272	247	246	277	247	236
11	267	251	275	280	237	265	253	230	229	258	230
12	251	258	249	295	288	230	257	246	223	222	250
K-5	1,175	1,206	1,240	1,263	1,248	1,257	1,262	1,241	1,224	1,195	1,225
6-8	685	661	691	658	686	687	678	679	708	764	724
9-12	1,058	1,074	1,060	1,103	1,076	1,009	998	993	971	958	989
K-12	2,918	2,941	2,991	3,024	3,010	2,953	2,938	2,913	2,903	2,917	2,938

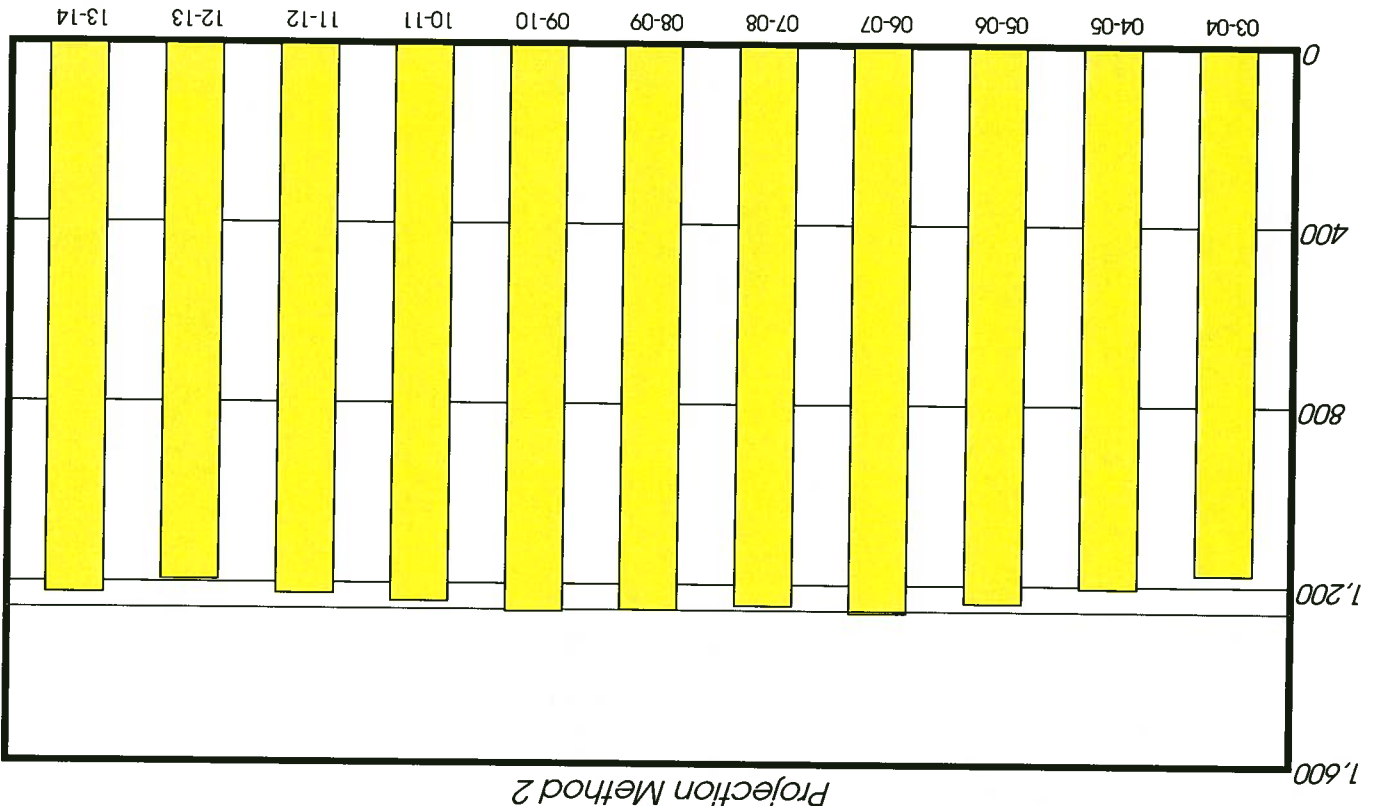
Tomah Area School District

Table 7 - Enrollment Projected Ten Years
Method 2

GRADE	2009-10	2010-11	2011-12	2012-13	2013-14	2014-15	2015-16	2016-17	2017-18	2018-19
K	183	192	198	201	207	0	0	0	0	0
1	198	186	195	201	204	210	0	0	0	0
2	183	200	188	197	203	206	212	0	0	0
3	237	186	204	191	201	207	210	216	0	0
4	233	249	195	214	200	211	217	220	227	0
5	228	228	244	191	210	196	207	213	216	222
6	207	245	245	262	205	226	211	222	229	232
7	221	211	250	250	267	209	231	215	227	234
8	250	223	213	252	252	269	211	233	217	229
9	241	271	242	231	273	273	292	229	253	235
10	247	246	277	247	236	279	279	299	234	259
11	253	230	229	258	230	219	259	259	278	218
12	257	246	223	222	250	223	213	251	251	270

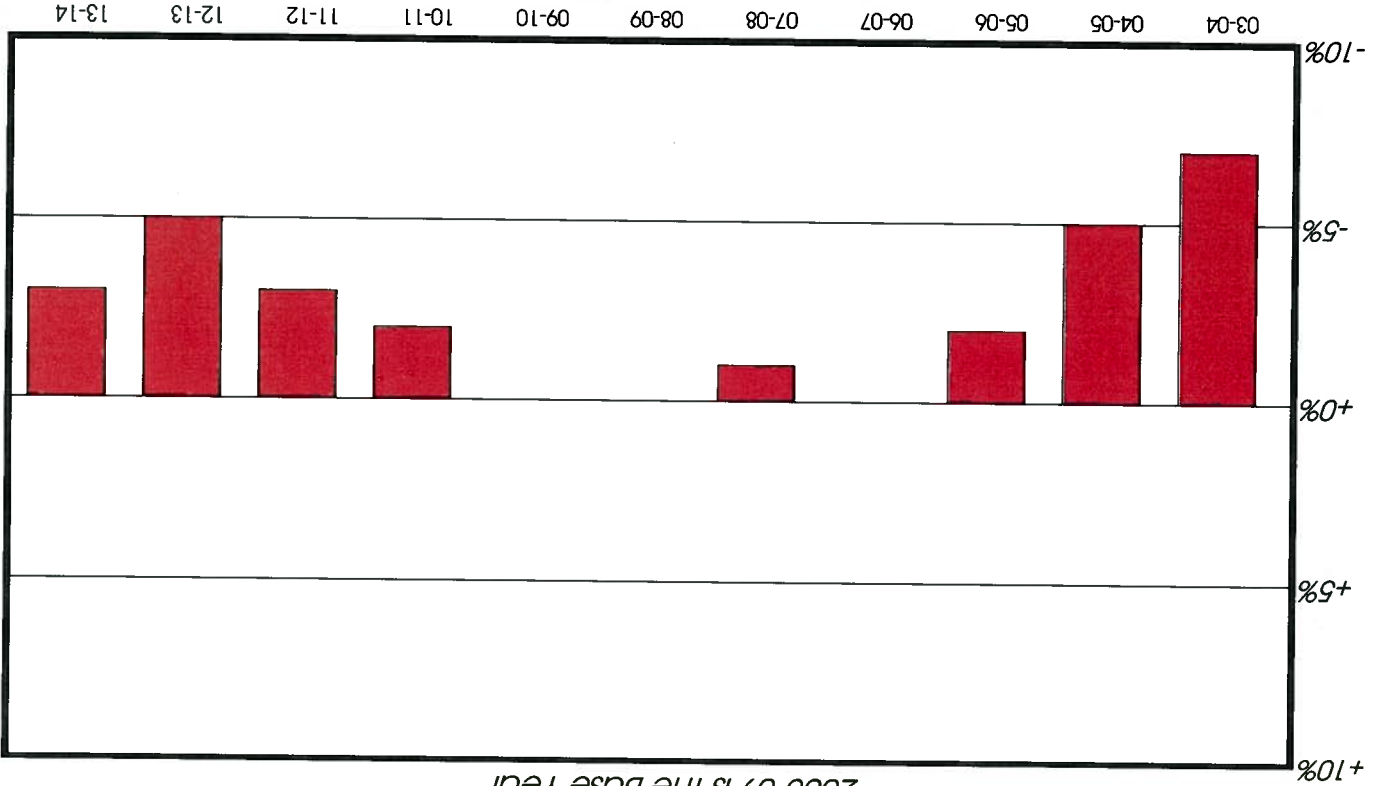
Tomah Area School District

Graph 5-A: K-5 Enrollment 2003-2014



Graph 5-B: % Change in K-5 Enrollment

2008-09 is the Base Year

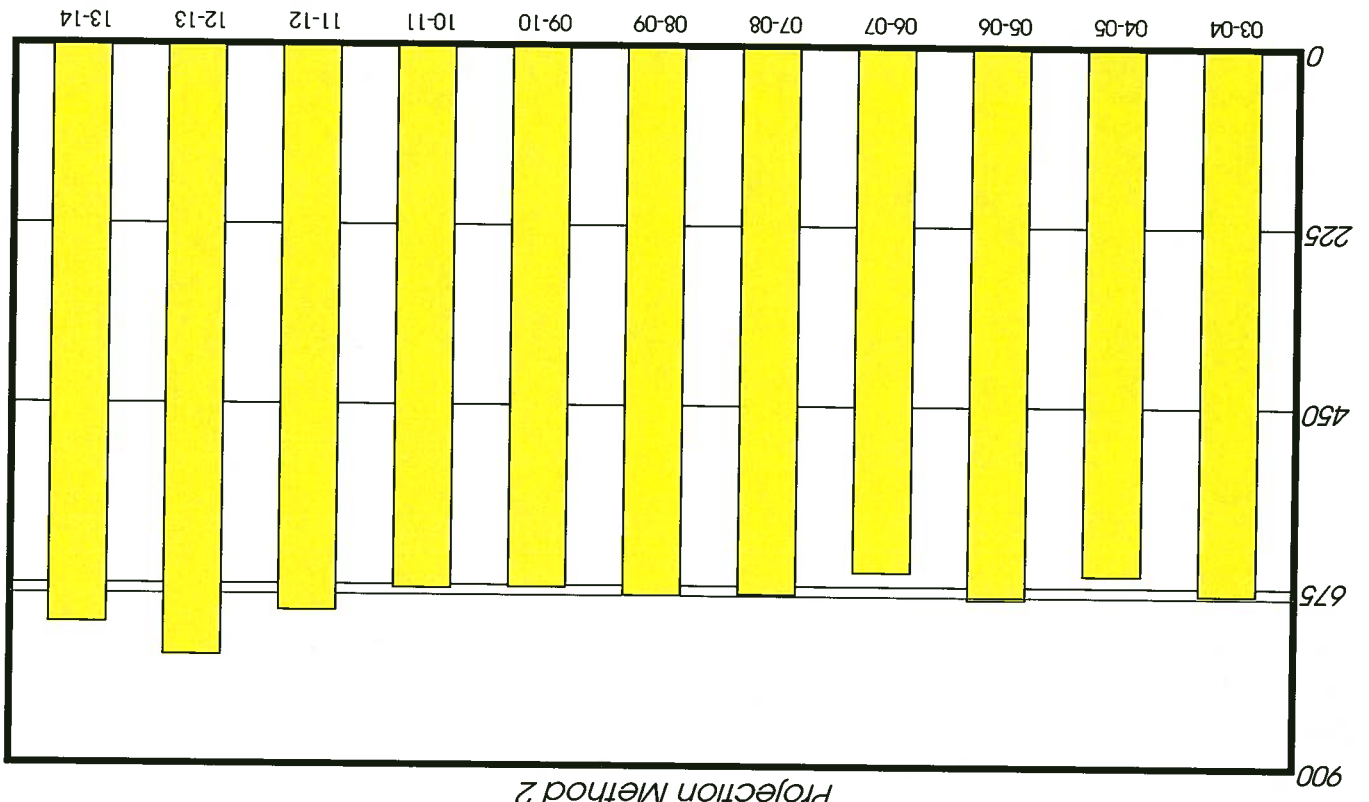


See Table 6 for specific enrollment numbers

NOTE:

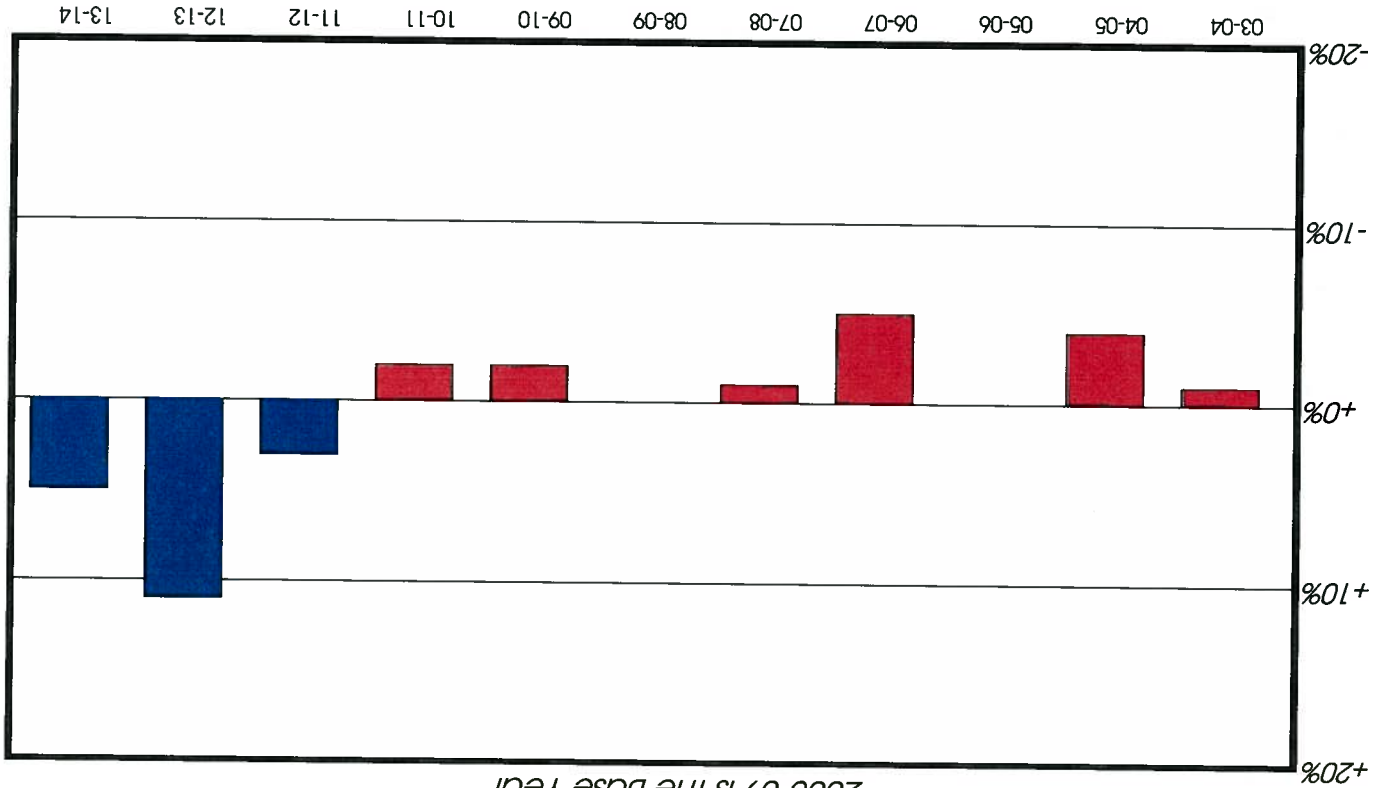
Tomah Area School District

Graph 6-A: 6-8 Enrollment 2003-2014



Graph 6-B: % Change in 6-8 Enrollment

2008-09 is the Base Year

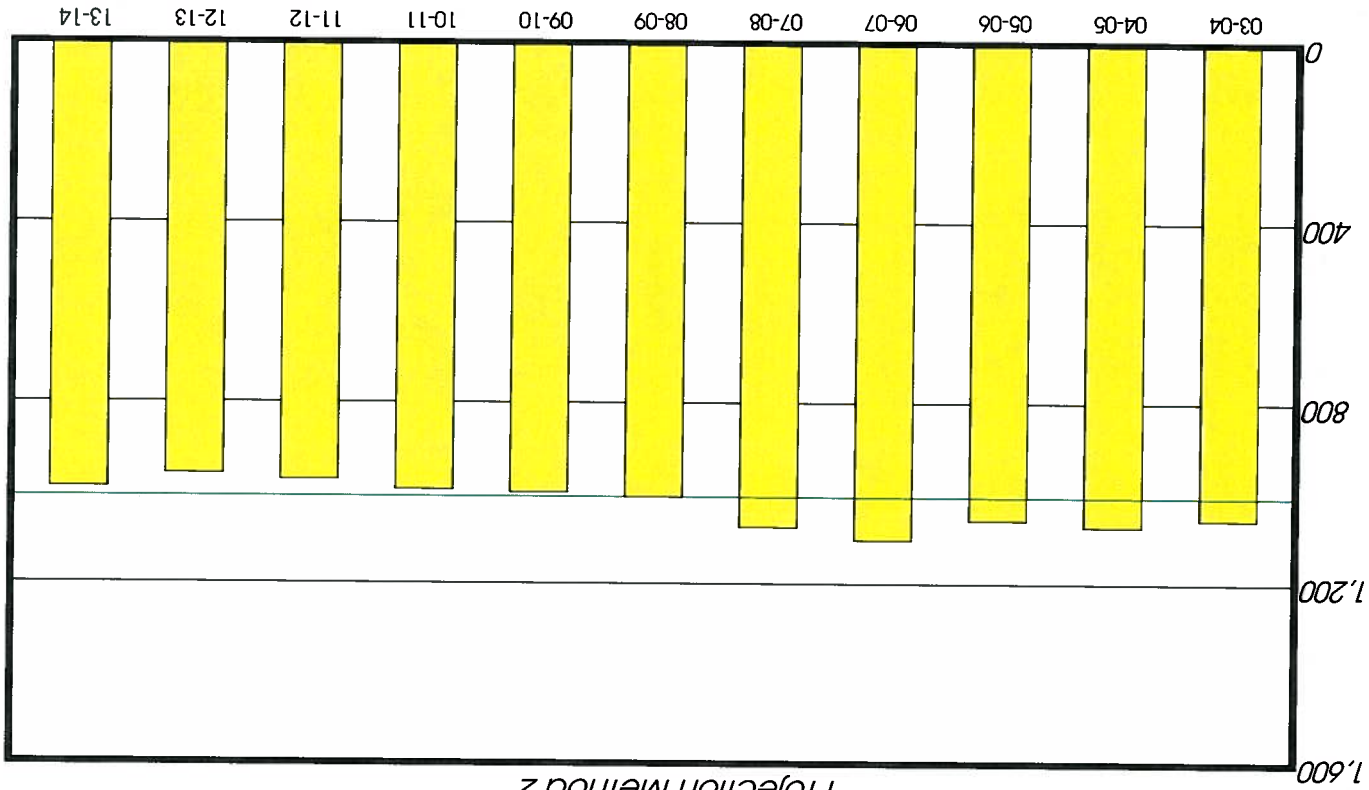


NOTE:

See Table 6 for specific enrollment numbers

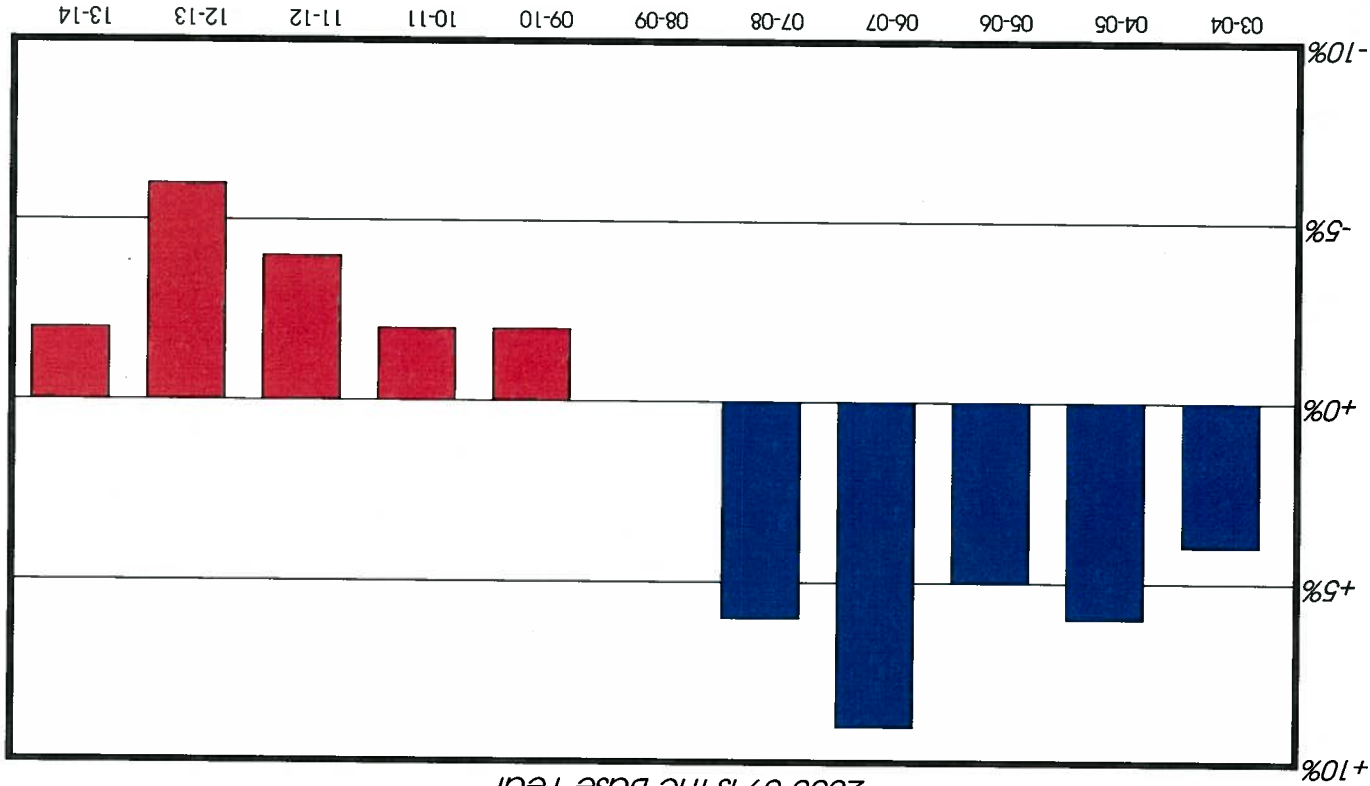
Tomah Area School District

Graph 7-A: 9-12 Enrollment 2003-2014



Graph 7-B: % Change in 9-12 Enrollment

2008-09 is the Base Year

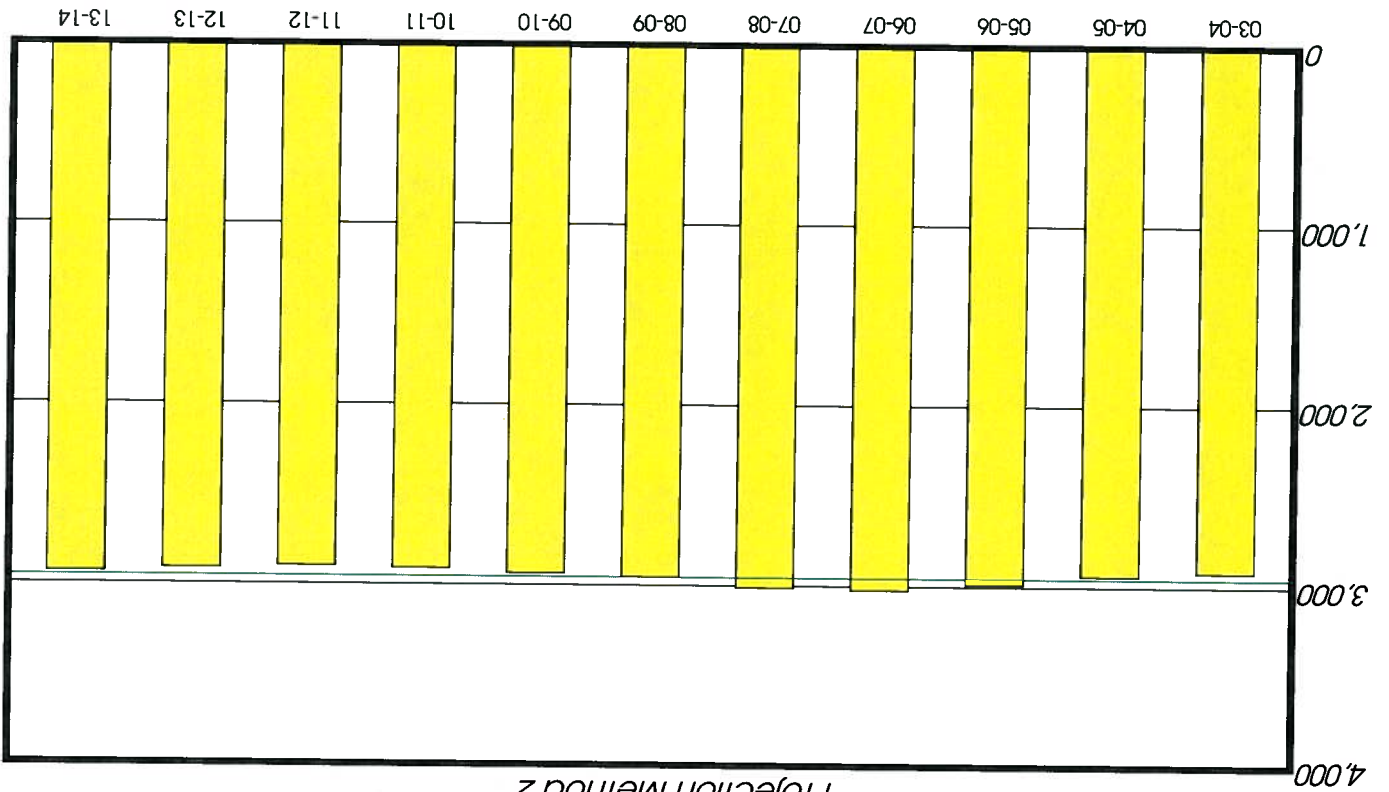


See Table 6 for specific enrollment numbers

NOTE:

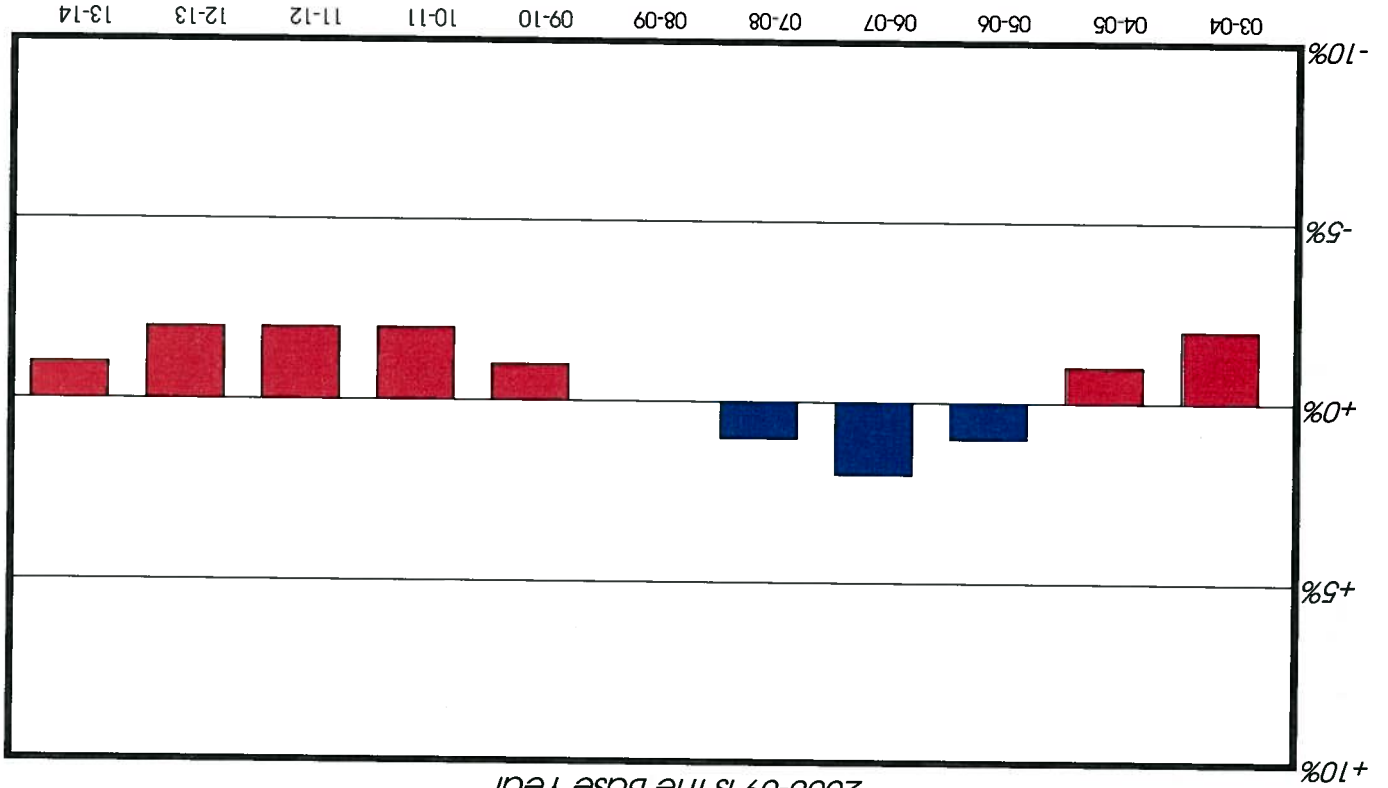
Tomah Area School District

Graph 8-A: K-12 Enrollment 2003-2014



Projection Method 2

Graph 8-B: % Change in K-12 Enrollment



2008-09 is the Base Year

NOTE:

See Table 6 for specific enrollment numbers

Tomah Area School District
Table 8 - Enrollment Projected Five Years
 Method 3

GRADE	2009-10	2010-11	2011-12	2012-13	2013-14
K	196	205	211	214	221
1	197	198	207	214	217
2	185	201	202	211	218
3	238	189	205	206	216
4	231	248	197	213	214
5	234	232	249	197	213
6	206	250	248	266	211
7	220	209	254	251	270
8	250	222	211	256	253
9	250	282	250	238	289
10	243	251	284	251	239
11	259	231	239	270	239
12	262	256	228	236	267
K-5	1,281	1,273	1,271	1,255	1,299
6-8	676	681	713	773	734
9-12	1,014	1,020	1,001	995	1,034
K-12	2,971	2,974	2,985	3,023	3,067

Tomah Area School District

Table 9 - Comparison of Past and Projected Enrollments
Method 3

GRADE	2003-04	2004-05	2005-06	2006-07	2007-08	2008-09	2009-10	2010-11	2011-12	2012-13	2013-14
K	182	209	208	229	178	195	196	205	211	214	221
	+6.67%	+7.18%	+6.67%	+17.44%	-8.72%	+0.00%	+0.51%	+5.13%	+8.21%	+9.74%	+13.33%
1	183	177	214	211	231	181	197	198	207	214	217
	+1.10%	-2.21%	+18.23%	+16.57%	+27.62%	+0.00%	+8.84%	+9.39%	+14.36%	+18.23%	+19.89%
2	208	188	189	217	218	233	185	201	202	211	218
	-10.73%	-19.31%	-18.88%	-6.87%	-6.44%	+0.00%	-20.60%	-13.73%	-13.30%	-9.44%	-6.44%
3	192	214	195	192	222	222	238	189	205	206	216
	-13.51%	-3.60%	-12.16%	-13.51%	+0.00%	+0.00%	+7.21%	-14.86%	-7.66%	-7.21%	-2.70%
4	205	203	220	194	197	233	231	248	197	213	214
	-12.02%	-12.88%	-5.58%	-16.74%	-15.45%	+0.00%	-0.86%	+6.44%	-15.45%	-8.58%	-8.15%
5	205	215	214	220	202	193	234	232	249	197	213
	+6.22%	+11.40%	+10.88%	+13.99%	+4.66%	+0.00%	+21.24%	+20.21%	+29.02%	+2.07%	+10.36%
6	225	226	214	225	243	217	206	250	248	266	211
	+3.69%	+4.15%	-1.38%	+3.69%	+11.98%	+0.00%	-5.07%	+15.21%	+14.29%	+22.58%	-2.76%
7	211	234	229	211	220	248	220	209	254	251	270
	-14.92%	-5.65%	-7.66%	-14.92%	-11.29%	+0.00%	-11.29%	-15.73%	+2.42%	+1.21%	+8.87%
8	249	201	248	222	223	222	250	222	211	256	253
	+12.16%	-9.46%	+11.71%	+0.00%	+0.45%	+0.00%	+12.61%	+0.00%	-4.95%	+15.32%	+13.96%
9	277	293	248	288	266	242	250	282	250	238	289
	+14.46%	+21.07%	+2.48%	+19.01%	+9.92%	+0.00%	+3.31%	+16.53%	+3.31%	-1.65%	+19.42%
10	263	272	288	240	285	272	243	251	284	251	239
	-3.31%	+0.00%	+5.88%	-11.76%	+4.78%	+0.00%	-10.66%	-7.72%	+4.41%	-7.72%	-12.13%
11	267	251	275	280	237	265	259	231	239	270	239
	+0.75%	-5.28%	+3.77%	+5.66%	-10.57%	+0.00%	-2.26%	-12.83%	-9.81%	+1.89%	-9.81%
12	251	258	249	295	288	230	262	256	228	236	267
	+9.13%	+12.17%	+8.26%	+28.26%	+25.22%	+0.00%	+13.91%	+11.30%	-0.87%	+2.61%	+16.09%

K-5	1,175	1,206	1,240	1,263	1,248	1,257	1,281	1,273	1,271	1,255	1,299
	-6.52%	-4.06%	-1.35%	+0.48%	-0.72%	+0.00%	+1.91%	+1.27%	+1.11%	-0.16%	+3.34%
6-8	685	661	691	658	686	687	676	681	713	773	734
	-0.29%	-3.78%	+0.58%	-4.22%	-0.15%	+0.00%	-1.60%	-0.87%	+3.78%	+12.52%	+6.84%
9-12	1,058	1,074	1,060	1,103	1,076	1,009	1,014	1,020	1,001	995	1,034
	+4.86%	+6.44%	+5.05%	+9.32%	+6.64%	+0.00%	+0.50%	+1.09%	-0.79%	-1.39%	+2.48%
K-12	2,918	2,941	2,991	3,024	3,010	2,953	2,971	2,974	2,985	3,023	3,067
	-1.19%	-0.41%	+1.29%	+2.40%	+1.93%	+0.00%	+0.61%	+0.71%	+1.08%	+2.37%	+3.86%

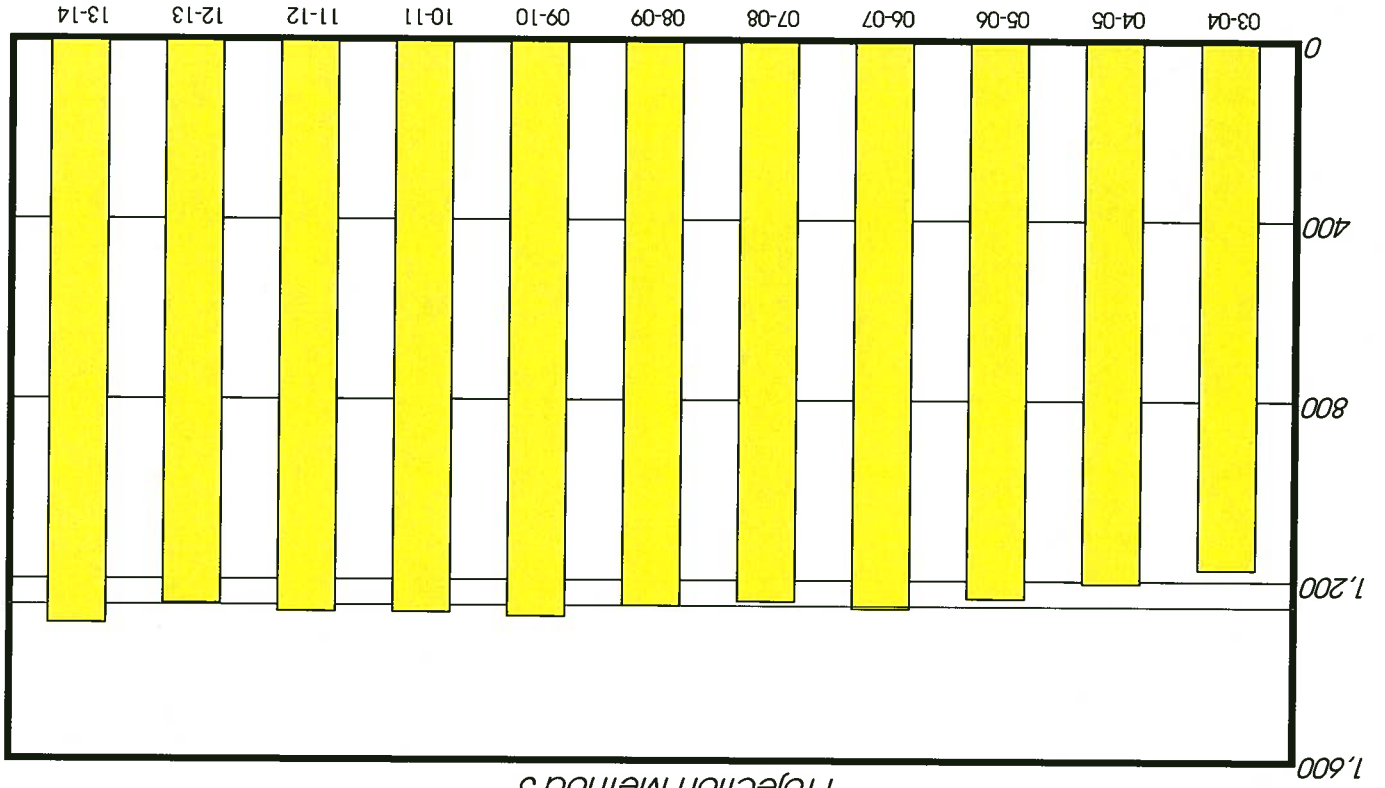
Tomah Area School District

Table 10 - Enrollment Projected Ten Years
Method 3

GRADE	2009-10	2010-11	2011-12	2012-13	2013-14	2014-15	2015-16	2016-17	2017-18	2018-19
K	196	205	211	214	221	0	0	0	0	0
1	197	198	207	214	217	224	0	0	0	0
2	185	201	202	211	218	221	228	0	0	0
3	238	189	205	206	216	223	226	233	0	0
4	231	248	197	213	214	225	232	235	242	0
5	234	232	249	197	213	214	226	233	236	243
6	206	250	248	266	211	228	229	242	249	253
7	220	209	254	251	270	214	231	232	245	252
8	250	222	211	256	253	273	216	233	234	247
9	250	282	250	238	289	285	308	244	263	264
10	243	251	284	251	239	291	287	310	245	265
11	259	231	239	270	239	227	277	273	295	233
12	262	256	228	236	267	236	224	274	270	292

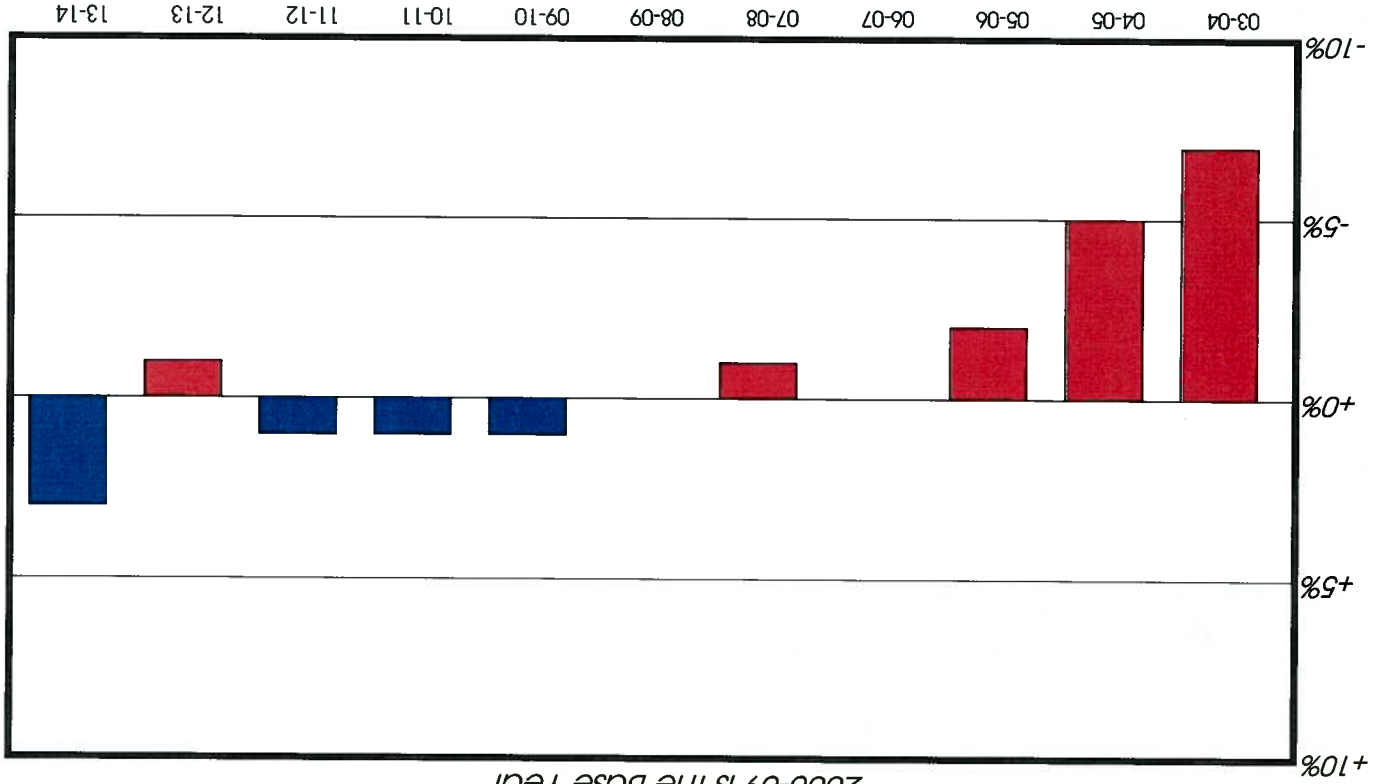
Tomah Area School District

Graph 9-A: K-5 Enrollment 2003-2014



Graph 9-B: % Change in K-5 Enrollment

2008-09 is the Base Year

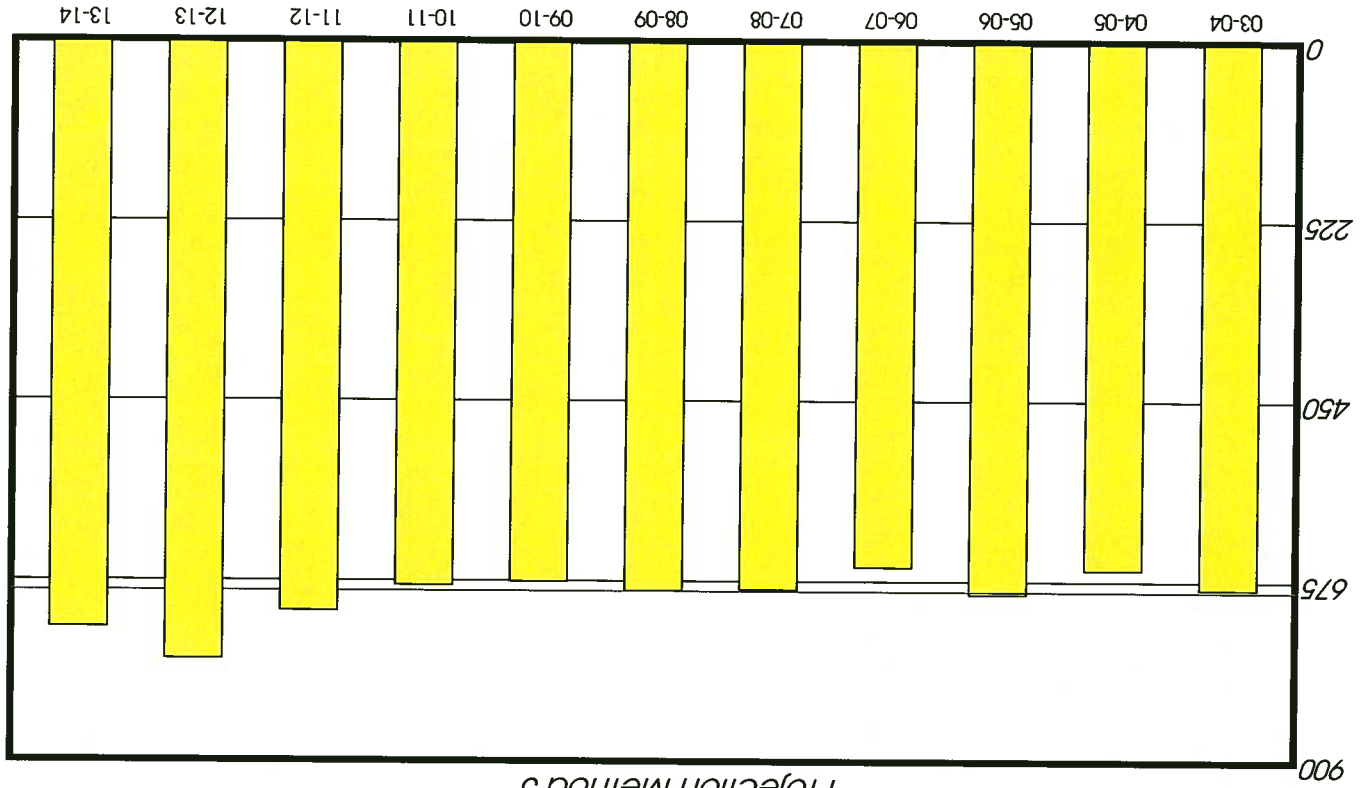


See Table 9 for specific enrollment numbers

NOTE:

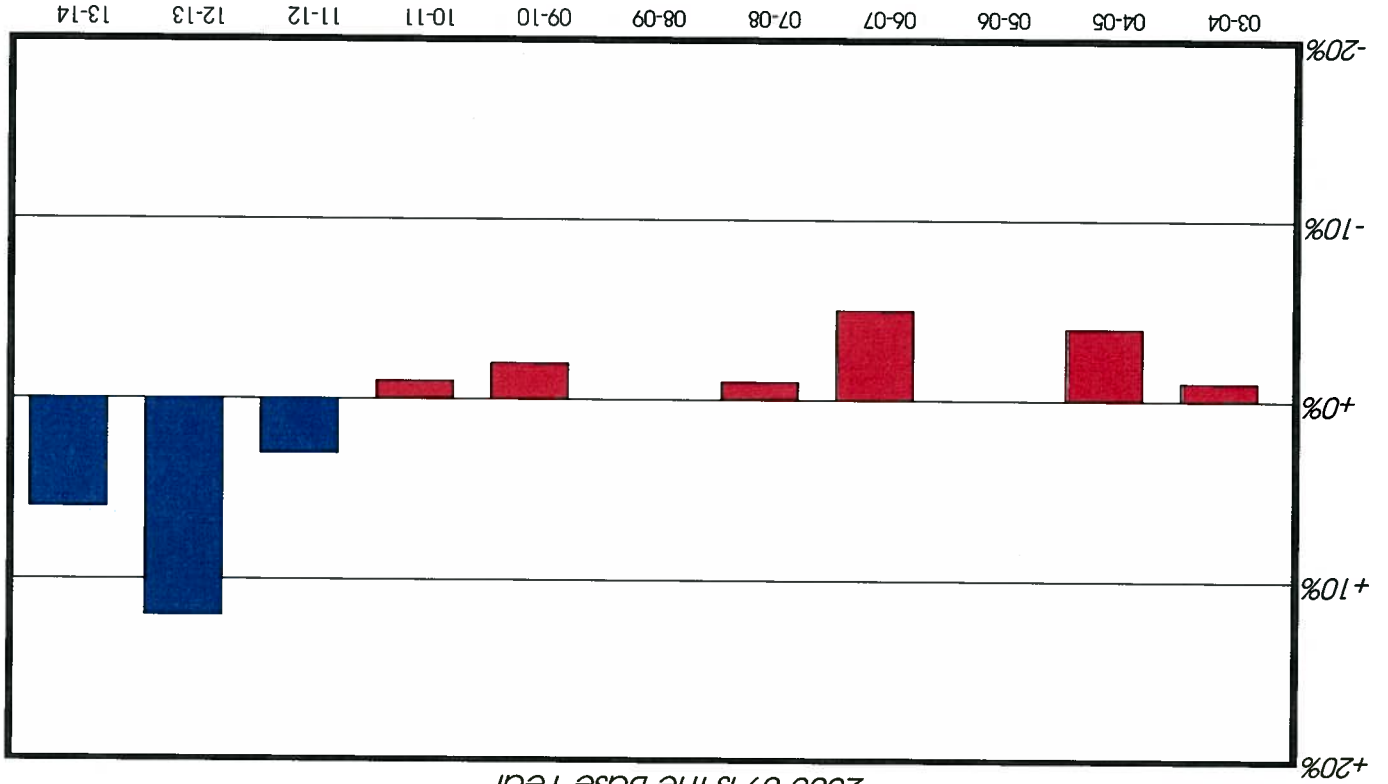
Tomah Area School District

Graph 10-A: 6-8 Enrollment 2003-2014



Projection Method 3

Graph 10-B: % Change in 6-8 Enrollment



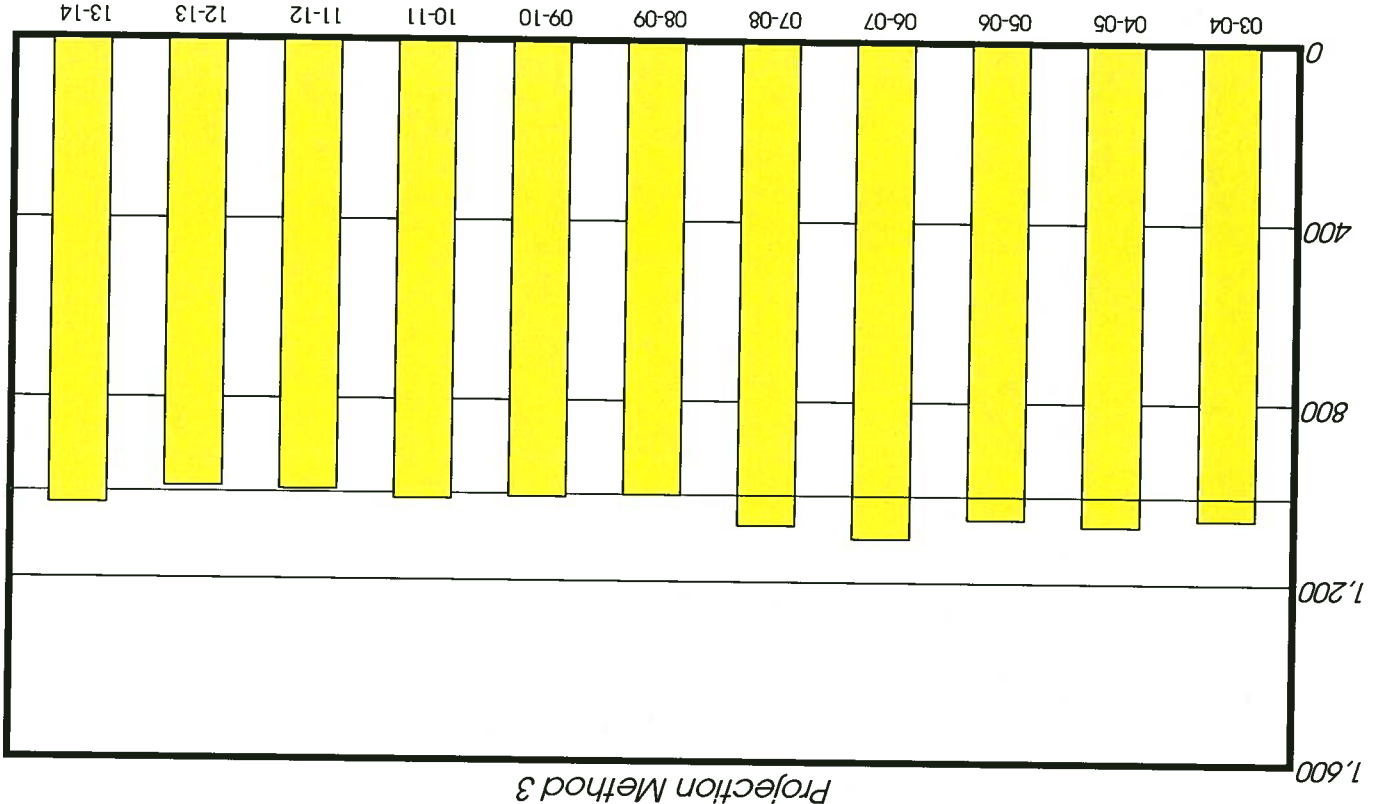
2008-09 is the Base Year

NOTE:

See Table 9 for specific enrollment numbers

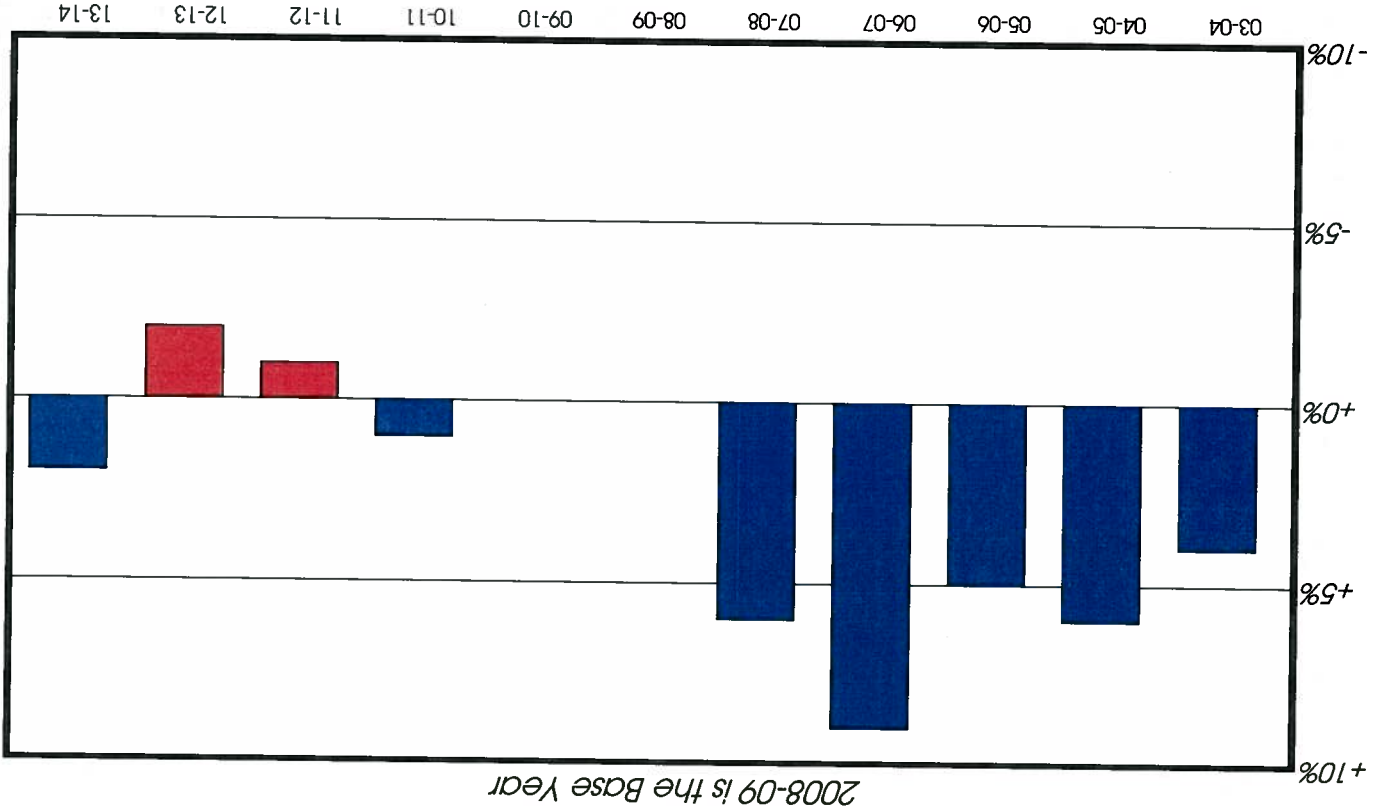
Tomah Area School District

Graph 11-A: 9-12 Enrollment 2003-2014



Projection Method 3

Graph 11-B: % Change in 9-12 Enrollment

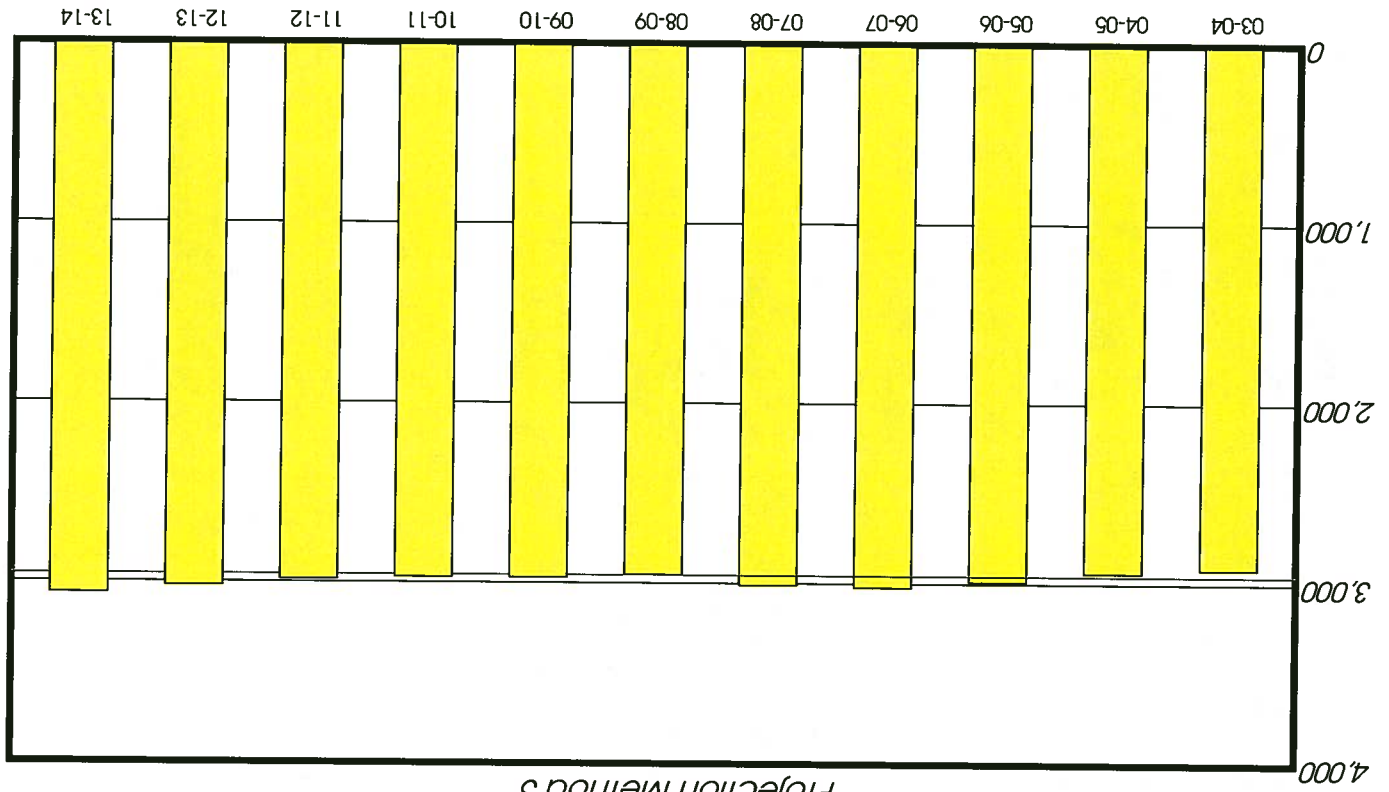


2008-09 is the Base Year

NOTE:
See Table 9 for specific enrollment numbers

Tomah Area School District

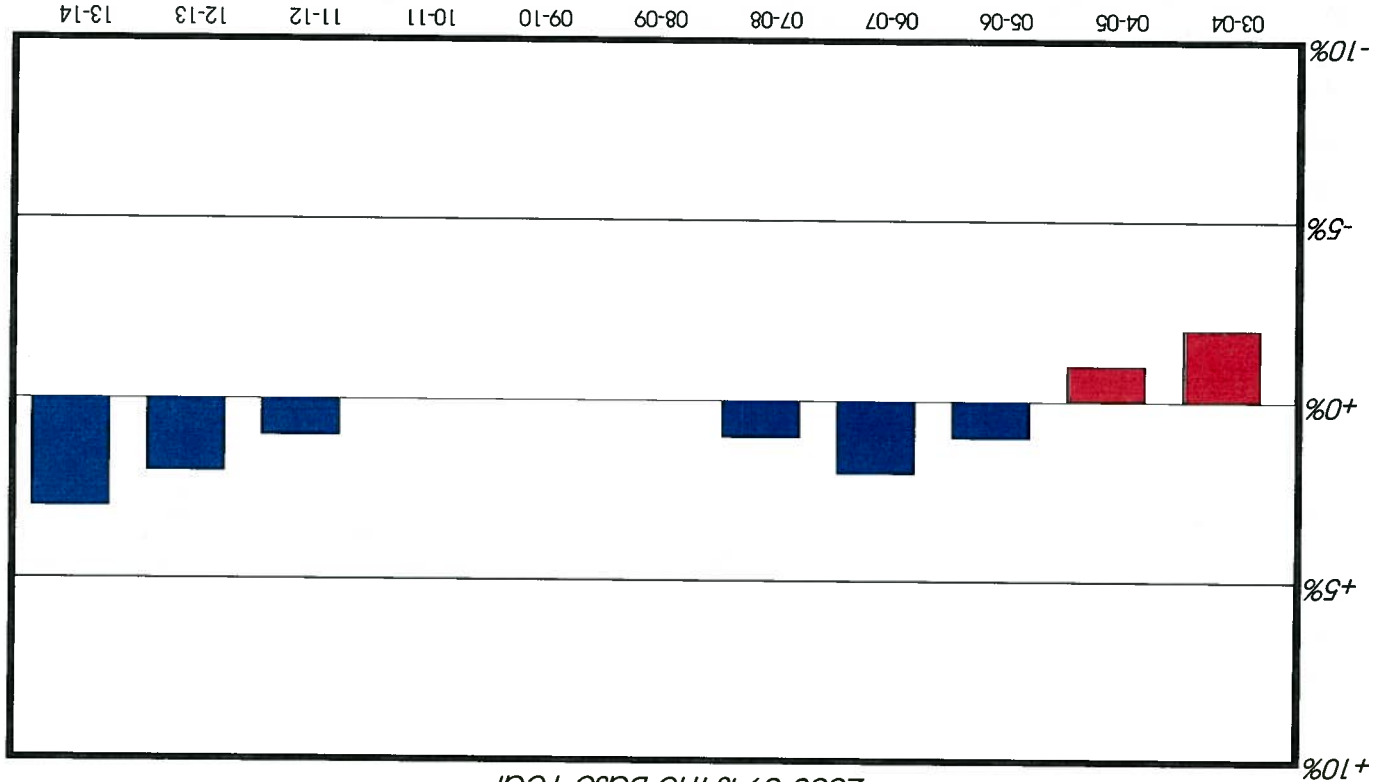
Graph 12-A: K-12 Enrollment 2003-2014



Projection Method 3

Graph 12-B: % Change in K-12 Enrollment

2008-09 is the Base Year



See Table 9 for specific enrollment numbers

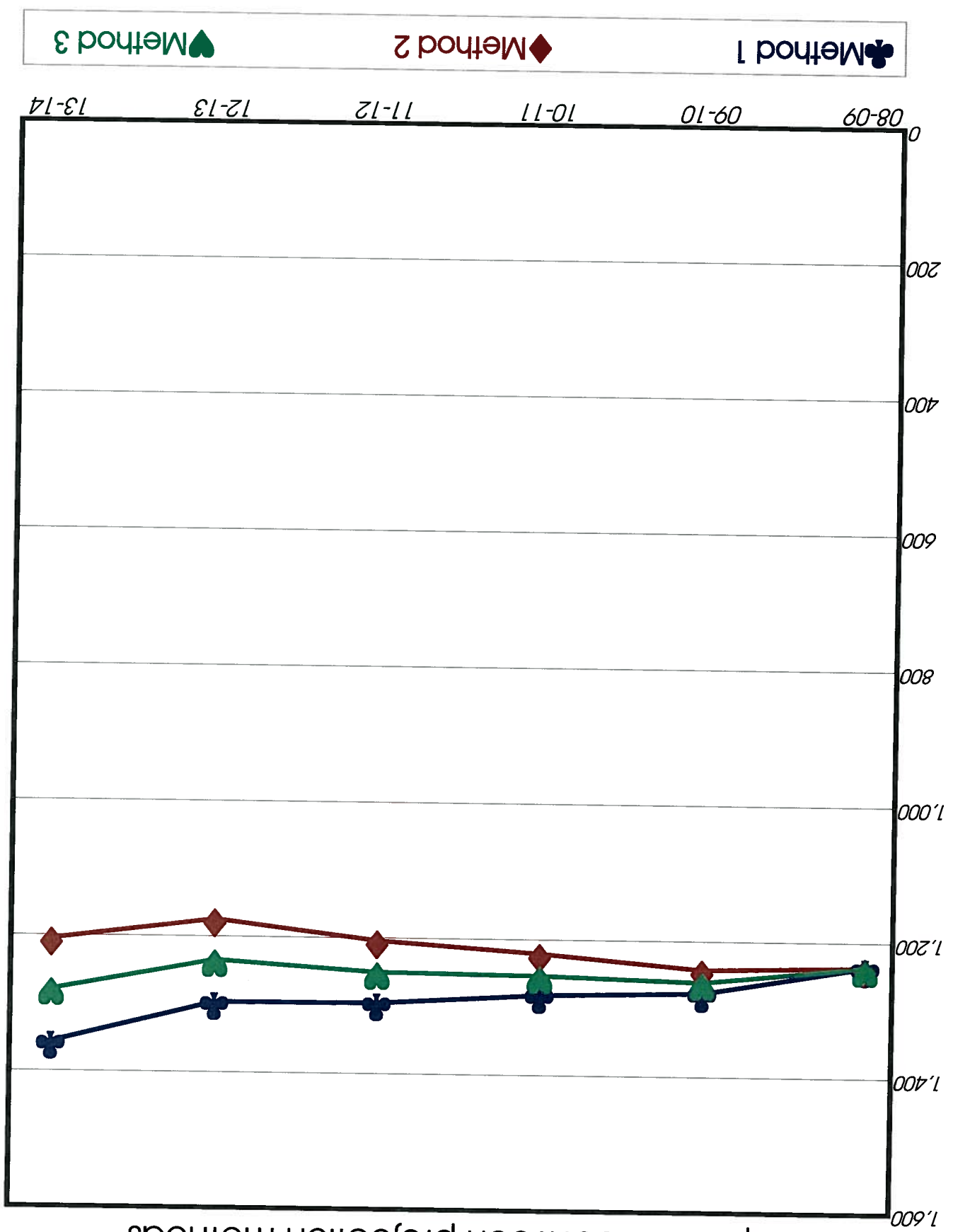
NOTE:

Tomah Area School District

Graph 13

K-5 Enrollment 2008-2013

Comparison between projection methods

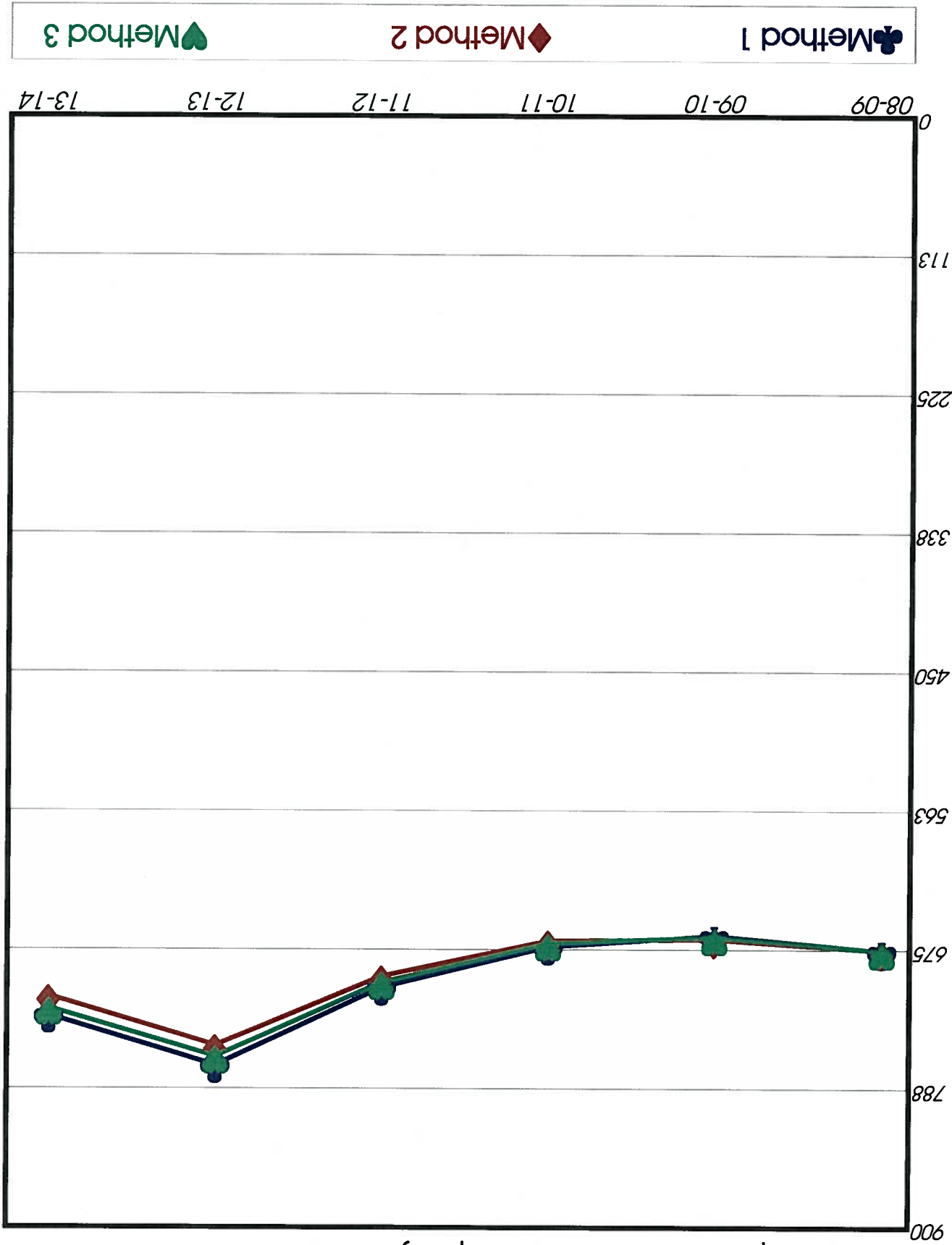


Tomah Area School District

Graph 14

6-8 Enrollment 2008-2013

Comparison between projection methods

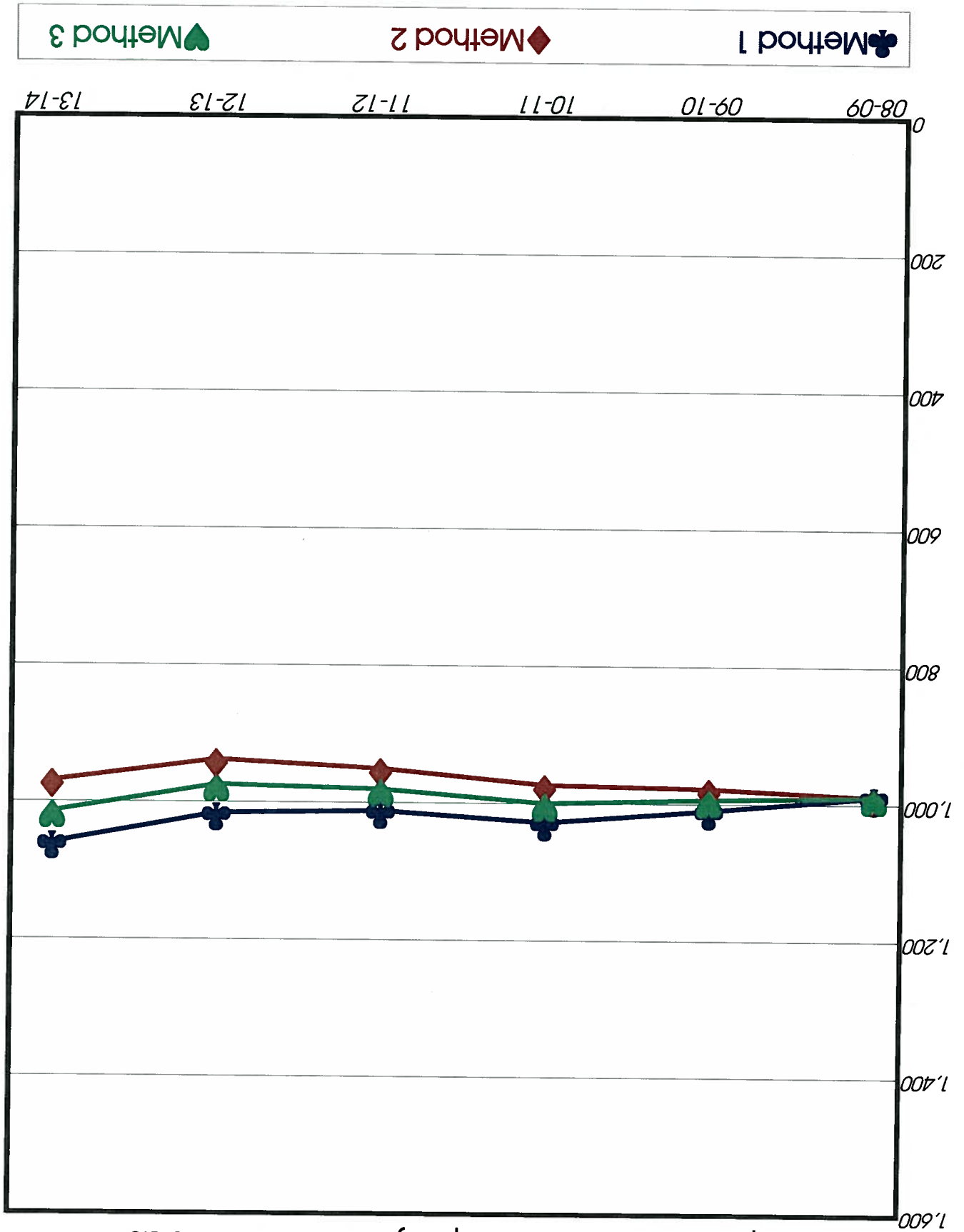


Tomah Area School District

Graph 15

9-12 Enrollment 2008-2013

Comparison between projection methods

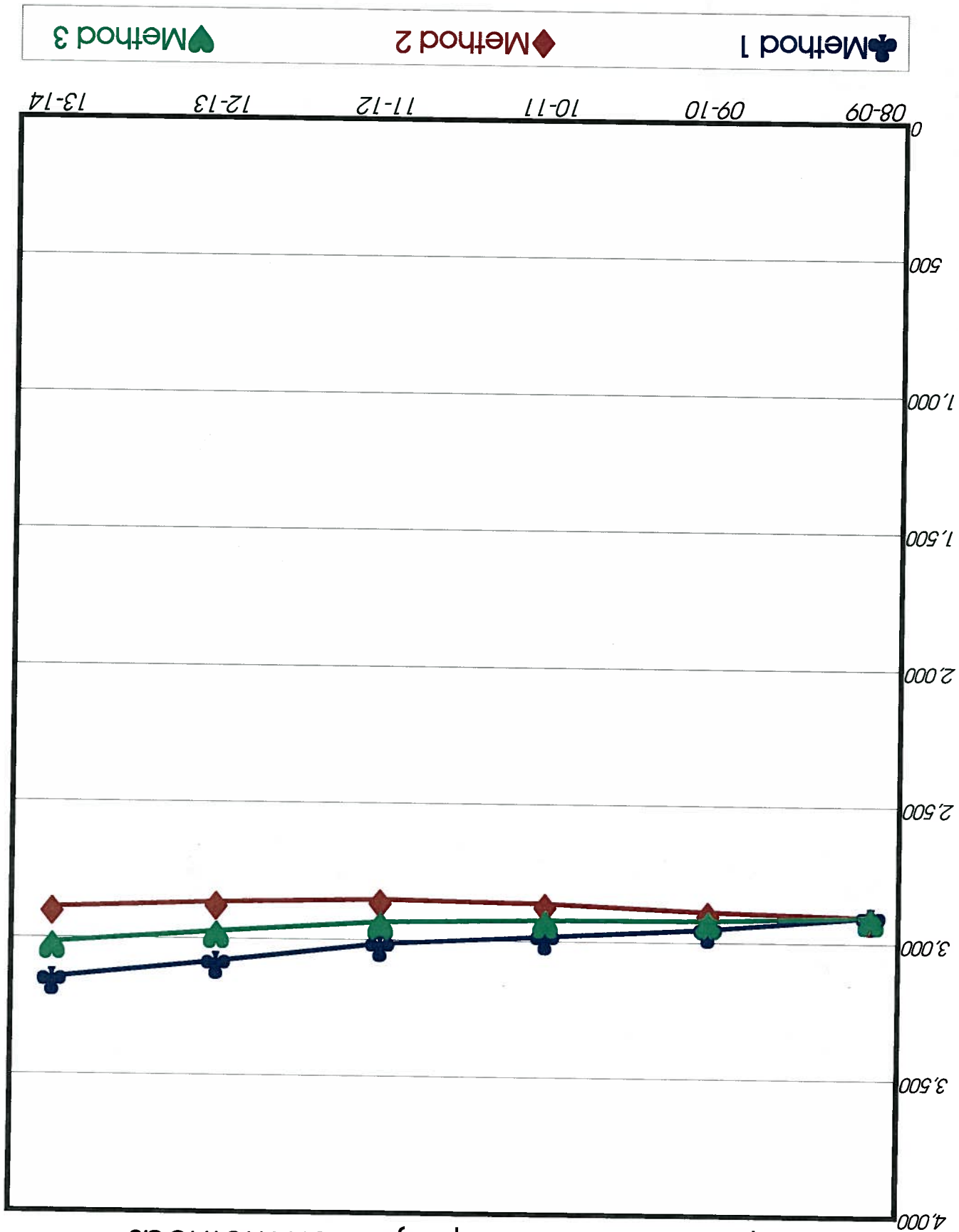


Tomah Area School District

Graph 16

K-12 Enrollment 2008-2013

Comparison between projection methods



Tomah Area School District

Table 11 - Teacher Requirements Projected Ten Years
Teacher/Pupil Ratio = 1:22

GRADE	2009-10	2010-11	2011-12	2012-13	2013-14	2014-15	2015-16	2016-17	2017-18	2018-19
K	9.5	9.9	10.2	10.4	10.7	0.0	0.0	0.0	0.0	0.0
1	8.9	9.5	10.0	10.3	10.5	10.8	0.0	0.0	0.0	0.0
2	8.5	9.2	9.8	10.3	10.6	10.8	11.1	0.0	0.0	0.0
3	10.9	8.7	9.4	10.0	10.6	10.9	11.0	11.4	0.0	0.0
4	10.4	11.2	9.0	9.7	10.4	10.9	11.2	11.4	11.7	0.0
5	10.9	10.7	11.5	9.2	10.6	11.2	11.5	11.5	11.7	12.0
6	9.4	11.6	11.4	12.2	9.8	10.5	11.3	11.9	12.2	12.5
7	10.0	9.5	11.7	11.5	12.3	9.9	10.6	11.4	12.0	12.3
8	11.4	10.0	9.5	11.8	11.5	12.5	10.0	10.7	11.5	12.1
9	11.8	13.3	11.8	11.2	13.8	13.5	14.6	11.6	12.5	13.5
10	10.9	11.7	13.2	11.6	11.0	13.6	13.4	14.4	11.5	12.4
11	12.0	10.5	11.4	12.8	11.3	10.7	13.2	13.0	14.0	11.2
12	12.1	12.1	10.6	11.5	12.9	11.4	10.8	13.3	13.0	14.1

Tomah Area School District

Table 12 - Teacher Requirements Projected Ten Years
Teacher/Pupil Ratio = 1:24

GRADE	2009-10	2010-11	2011-12	2012-13	2013-14	2014-15	2015-16	2016-17	2017-18	2018-19
K	8.7	9.1	9.3	9.5	9.8	0.0	0.0	0.0	0.0	0.0
1	8.2	8.8	9.2	9.4	9.6	9.9	0.0	0.0	0.0	0.0
2	7.8	8.4	9.0	9.5	9.7	9.9	10.2	0.0	0.0	0.0
3	10.0	8.0	8.6	9.2	9.7	10.0	10.1	10.4	0.0	0.0
4	9.5	10.3	8.2	8.9	9.5	10.0	10.3	10.5	10.8	0.0
5	10.0	9.8	10.5	8.4	9.1	9.8	10.3	10.5	10.7	11.0
6	8.6	10.6	10.4	11.2	9.0	9.7	10.4	10.9	11.2	11.4
7	9.1	8.7	10.7	10.5	11.3	9.0	9.8	10.5	11.0	11.3
8	10.4	9.2	8.8	10.8	10.6	11.4	9.1	9.8	10.5	11.1
9	10.8	12.2	10.8	10.3	12.6	12.4	13.4	10.7	11.5	12.3
10	10.0	10.7	12.1	10.7	10.1	12.5	12.3	13.2	10.5	11.4
11	11.0	9.7	10.4	11.8	10.4	9.8	12.1	11.9	12.8	10.3
12	11.1	11.1	9.7	10.5	11.8	10.4	9.9	12.2	12.0	12.9

Tomah Area School District

Table 13 - Teacher Requirements Projected Ten Years
Teacher/Pupil Ratio = 1:26

GRADE	2009-10	2010-11	2011-12	2012-13	2013-14	2014-15	2015-16	2016-17	2017-18	2018-19
K	8.0	8.4	8.6	8.8	9.0	9.0	0.0	0.0	0.0	0.0
1	7.5	8.1	8.5	8.7	8.8	9.1	0.0	0.0	0.0	0.0
2	7.2	7.8	8.3	8.7	9.0	9.1	9.4	0.0	0.0	0.0
3	9.2	7.3	8.0	8.5	9.0	9.2	9.3	9.6	0.0	0.0
4	8.8	9.5	7.6	8.2	8.8	9.2	9.5	9.7	9.9	0.0
5	9.2	9.0	9.7	7.8	8.4	9.0	9.5	9.7	9.9	10.2
6	7.9	9.8	9.6	10.3	8.3	8.9	9.6	10.1	10.3	10.5
7	8.4	8.0	9.9	9.7	10.4	8.3	9.0	9.7	10.2	10.4
8	9.6	8.5	8.1	10.0	9.8	10.5	8.4	9.1	9.7	10.3
9	10.0	11.3	10.0	9.5	11.7	11.4	12.3	9.8	10.6	11.4
10	9.2	9.9	11.2	9.8	9.3	11.5	11.3	12.2	9.7	10.5
11	10.2	8.9	9.6	10.8	9.6	9.1	11.2	11.0	11.8	9.5
12	10.3	10.2	9.0	9.7	10.9	9.6	9.1	11.3	11.0	11.9

Tomah Area School District

Table 14 - Teacher Requirements Projected Ten Years
Teacher/Pupil Ratio = 1:28

GRADE	2009-10	2010-11	2011-12	2012-13	2013-14	2014-15	2015-16	2016-17	2017-18	2018-19
K	7.4	7.8	8.0	8.1	8.4	0.0	0.0	0.0	0.0	0.0
1	7.0	7.5	7.9	8.1	8.2	8.5	0.0	0.0	0.0	0.0
2	6.6	7.2	7.7	8.1	8.3	8.5	8.7	0.0	0.0	0.0
3	8.5	6.8	7.4	7.9	8.3	8.5	8.7	8.9	0.0	0.0
4	8.2	8.8	7.0	7.6	8.1	8.6	8.8	9.0	9.2	0.0
5	8.5	8.4	9.0	7.2	7.8	8.4	8.8	9.0	9.2	9.4
6	7.4	9.1	8.9	9.6	7.7	8.3	8.9	9.4	9.6	9.8
7	7.8	7.4	9.2	9.0	9.7	7.8	8.4	9.0	9.4	9.7
8	8.9	7.9	7.5	9.3	9.1	9.8	7.8	8.4	9.0	9.5
9	9.3	10.5	9.3	8.8	10.8	10.6	11.5	9.1	9.9	10.6
10	8.5	9.2	10.4	9.1	8.7	10.7	10.5	11.3	9.0	9.8
11	9.4	8.3	8.9	10.1	8.9	8.4	10.4	10.2	11.0	8.8
12	9.5	9.5	8.3	9.0	10.1	8.9	8.5	10.5	10.3	11.1

Tomah Area School District

Table 15 - Teacher Requirements Projected Ten Years
Teacher/Pupil Ratio = 1:30

GRADE	2009-10	2010-11	2011-12	2012-13	2013-14	2014-15	2015-16	2016-17	2017-18	2018-19
K	6.9	7.3	7.5	7.6	7.8	0.0	0.0	0.0	0.0	0.0
1	6.5	7.0	7.3	7.5	7.7	7.9	0.0	0.0	0.0	0.0
2	6.2	6.7	7.2	7.6	7.8	7.9	8.1	0.0	0.0	0.0
3	8.0	6.4	6.9	7.4	7.8	8.0	8.1	8.3	0.0	0.0
4	7.6	8.2	6.6	7.1	7.6	8.0	8.2	8.4	8.6	0.0
5	8.0	7.8	8.4	6.7	7.3	7.8	8.2	8.4	8.6	8.8
6	6.9	8.5	8.3	9.0	7.2	7.7	8.3	8.7	9.0	9.1
7	7.3	6.9	8.6	8.4	9.0	7.2	7.8	8.4	8.8	9.0
8	8.3	7.4	7.0	8.6	8.5	9.1	7.3	7.9	8.4	8.9
9	8.7	9.8	8.6	8.2	10.1	9.9	10.7	8.5	9.2	9.9
10	8.0	8.6	9.7	8.5	8.1	10.0	9.8	10.6	8.4	9.1
11	8.8	7.7	8.3	9.4	8.3	7.9	9.7	9.5	10.3	8.2
12	8.9	8.9	7.8	8.4	9.5	8.3	7.9	9.8	9.6	10.3

Tomah Area School District

Table 16 - Teacher Requirements Projected Ten Years
Teacher/Pupil Ratio = 1:32

GRADE	2009-10	2010-11	2011-12	2012-13	2013-14	2014-15	2015-16	2016-17	2017-18	2018-19
K	6.5	6.8	7.0	7.1	7.3	0.0	0.0	0.0	0.0	0.0
1	6.1	6.6	6.9	7.1	7.2	7.4	0.0	0.0	0.0	0.0
2	5.8	6.3	6.8	7.1	7.3	7.4	7.6	0.0	0.0	0.0
3	7.5	6.0	6.5	6.9	7.3	7.5	7.6	7.8	0.0	0.0
4	7.2	7.7	6.2	6.7	7.1	7.5	7.7	7.8	8.1	0.0
5	7.5	7.3	7.9	6.3	6.8	7.3	7.7	7.9	8.0	8.3
6	6.4	8.0	7.8	8.4	6.7	7.3	7.8	8.2	8.4	8.6
7	6.8	6.5	8.0	7.9	8.5	6.8	7.3	7.8	8.3	8.5
8	7.8	6.9	6.6	8.1	7.9	8.6	6.8	7.4	7.9	8.3
9	8.1	9.2	8.1	7.7	9.5	9.3	10.0	8.0	8.6	9.3
10	7.5	8.0	9.1	8.0	7.6	9.4	9.2	9.9	7.9	8.5
11	8.3	7.3	7.8	8.8	7.8	7.4	9.1	8.9	9.6	7.7
12	8.3	8.3	7.3	7.9	8.9	7.8	7.4	9.2	9.0	9.7

Tomah Area School District

Table 17 - Accuracy Table
 Difference Between Actual and Projected 2008-09 Enrollment

Grade	Current Enrollment	Method 1 Projection Diff. %	Method 2 Projection Diff. %	Method 3 Projection Diff. %
K	195	228	199	213
		+16.79%	+1.90%	+9.34%
1	181	179	180	179
		-1.18%	-0.80%	-0.99%
2	233	239	239	239
		+2.67%	+2.43%	+2.55%
3	222	224	223	223
		+0.78%	+0.46%	+0.62%
4	233	228	228	228
		-2.19%	-2.24%	-2.22%
5	193	204	205	205
		+5.75%	+6.28%	+6.02%
6	217	215	223	219
		-1.01%	+2.82%	+0.91%
7	248	244	238	241
		-1.60%	-4.19%	-2.90%
8	222	222	233	227
		+0.06%	+4.74%	+2.40%
9	242	266	267	267
		+9.89%	+10.41%	+10.15%
10	272	261	263	262
		-4.11%	-3.22%	-3.67%
11	265	280	281	281
		+5.53%	+6.20%	+5.87%
12	230	241	244	242
		+4.58%	+5.99%	+5.28%
K-5	1,257	1,302	1,274	1,287
		+3.58%	+1.35%	+2.39%
6-8	687	681	694	687
		-0.87%	+1.02%	+0.00%
9-12	1,009	1,048	1,055	1,052
		+3.87%	+4.56%	+4.26%
K-12	2,953	3,031	3,023	3,026
		+2.64%	+2.37%	+2.47%