

Tomah Area School District

Enrollment Projection
2007/08

Information Management Systems

*6237 Arroyo Vista
Rockford MI 49341
(616)874-8963 (Fax & Phone)*

WWW.ENROLLPRO.COM

Tomah Area School District

TABLE OF CONTENTS

Projection Interpretation Guide	I
Table of Area Births	1
Actual Enrollment	2
Projected Enrollment using Method 1	3
Enrollment Graphs - Method 1	6
Projected Enrollment using Method 2	10
Enrollment Graphs - Method 2	13
Projected Enrollment using Method 3	17
Enrollment Graphs - Method 3	20
Cross - Method Graphs	24
Projected Teacher/Pupil Ratios - 1/22 to 1/32	28
Accuracy Table	34

INFORMATION MANAGEMENT SYSTEMS

Enrollment Projection Interpretation Guide

Information Management Systems has gone to great lengths to make our enrollment projection report as easy to understand as possible. However, being a primarily statistical report, it does require a certain amount of analysis. This guide is designed to assist you in that analysis. The entire enrollment projection report is explained page by page to help you understand the meaning and significance of each number.

We use three variations of the Cohort Survival Method to project enrollments. This method analyzes the survival ratios for your students and then projects those ratios into the future. The survival ratio compares how many students are in a particular grade this year against how many students were in the preceding grade the previous year. For example, if there are 100 first graders in 2000-01 and 113 second graders in 2001-02 then the survival ratio for that 2nd grade class is 113%. The manner in which each of the projection methods use the survival ratios is described below.

All of the students listed in grades K through 12 are projected in this fashion. Any grades listed in the report other than K-12, such as PreK, Special Ed, or Ungraded, are projected by looking at the survival trends within that grade, rather than the trend from the preceding grade. The unevenness of grade progression for these students prohibits the standard technique.

Page 1: County Births

This table shows the number of resident births for your district's county for the past eleven years. These numbers, obtained from your state's health department, are used to project what proportion of children born in your county become students at your schools. Because the department of health cannot compile birth statistics for a particular year until at least the middle of the next year, the current year's birth rate is an estimate. This number is based upon past births and national and local trends in the birth rate.

Table 1: Actual Enrollments

This may be the most important table in the projection package, as it shows the past enrollment upon which the rest of your report is based. The table has your district's enrollment for the past six years listed by grade. The number under the enrollment figure is the survival ratio for that grade in that year. Numbers above 100 (in blue) indicate an increase in enrollment from the previous grade/year, while numbers below 100 (in red) indicate a loss of enrollment.

When checking these numbers, be alert for extremely large variations in the ratios because they serve as indicators for trends in your district's enrollment, or errors in the enrollment numbers. The summary table at the bottom of this page, and most of the other pages, simply aggregates the table above it into groups corresponding with your district's grade/building configuration.

Projection Method 1

Projection method 1 uses the survival ratios for the past five years in a particular grade. It arrives at a mean value to use in projecting how many students in the previous grade the prior year will become students in that grade that year. This method is the most accurate for school districts that have not experienced major impacts on their district in recent years. The closing or opening of a private school, the addition of a preschool program, or re-zoning of your district are a few of the occurrences that may have affected your past enrollment, and in turn, your future enrollment projections. To find out which of the three projection methods might be most accurate for your schools, please refer to the accuracy table on the last page of this report.

Table 2: Projected Enrollment by Method 1

This table predicts what your enrollment will be up to five years into the future, grade by grade. The blue figures under the enrollment numbers are the multipliers that are used to represent the survival ratio that particular grade has shown in the past. Numbers far from 100 indicate that either a loss or a gain of enrollment has occurred, and care should be taken to determine what the cause of this fluctuation might be.

Table 3: Comparison by Method 1

This table summarizes the past two pages by showing past, present, and projected future enrollment. The small numbers indicate the percentage difference between that year's enrollment and the current year's, blue for enrollment above the current year's, and red when below. The key numbers on this table are the percent changes for the grade configuration summaries for the future. These indicate the extent, as a percentage of this year's enrollment, to which your district will either lose (red) or gain (blue) enrollment.

Table 4: 10 Year Projections by Method 1

This table shows what enrollment will look like ten years into the future. You will notice that, starting six years into the future, some grades are omitted from the report. This is because birth rates, which are the base from which the projections work, are very difficult to project with any accuracy. Without birth data, Kindergarten enrollment becomes impossible to project six years from now, and each higher grade falls out the following year.

Although this gives only a partial glimpse of your enrollment ten years from now, we feel it is better to exclude some information than to possibly be misleading with inaccurate data.

Enrollment Graphs as projected by Method 1

The first set of charts, one for each grade grouping, depicts the information from the past three tables in graphic form. Each graph deals with one of your district's building levels. The last chart is usually reserved for total district enrollment. The upper chart on each page tracks your enrollment level, while the lower tracks the percentage difference between your current enrollment and the enrollment in that year.

Projection Method 2

The second method used to project the enrollment of your school district uses the survival ratio for only the current year to project enrollment. This method may be most accurate for your school if it has recently experienced a change in its enrollment trends. The closing of a private school in your district last year will affect your enrollment this year, and in years to come. Under these and similar circumstances, method 2 will have the best predictive power. Please refer to Table 17 on the last page of the report to determine which method was best able to predict this year's enrollment.

Table 5: Projected Enrollment by Method 2

This table predicts what your enrollment will be up to five years into the future, grade by grade. The blue figures under the enrollment numbers are the multipliers that are used to represent the survival ratio that particular grade has shown in the past. Numbers far from 100 indicate that either a loss or a gain has occurred, and care should be taken to determine what the cause of this fluctuation might be.

Table 6: Comparison by Method 2

This table summarizes the previous page with your historical information by showing past, present, and projected future enrollment. The small numbers indicate the percentage difference between that year's enrollment and the current year's. The key numbers on this table are the percent changes for the summary groups for the future. These indicate the extent, as a percentage of this year's enrollment, to which your district will either lose (red) or gain (blue) enrollment.

Table 7: 10 Year Projections by Method 2

This table shows what enrollment will look like ten years into the future. You will notice that, starting six years into the future, some grades are omitted from the report. This is because birth rates, which are the base from which the projections work, are very difficult to project with any accuracy. Without birth data, Kindergarten enrollment becomes impossible to project six years from now, and each higher grade falls out the following year.

Although this gives only a partial glimpse of your enrollment ten years from now, we feel it is better to exclude some information than to possibly be misleading with inaccurate data.

Enrollment Graphs as projected by Method 2

The second set of graphs depicts the information from the past three tables in graphic form. Each graph deals with one of your district's building levels. The last chart is usually reserved for total district enrollment. The upper chart on each page tracks your enrollment level, while the lower tracks the percentage difference between your current enrollment and the enrollment in that year.

Projection method 3

This method uses the average arrived at by method 1 and combines that with the one year ratio used by method 2. The resulting ratio emphasizes current trends in your enrollment while tempering that with the trends of the past. This method will best suit districts that have had fluctuations in their enrollment due to temporary occurrences, but do not expect those occurrences to overwhelmingly impact future enrollment. As with the other methods, Table 17 shows which method has the best predictive power for your particular situation.

Table 8: Projected Enrollment by Method 3

This table predicts what your enrollment will be up to five years into the future, grade by grade. The blue figures under the enrollment numbers are the multipliers that are used to represent the survival ratio that particular grade has shown in the past. Numbers far from 100 indicate that either a loss or a gain has occurred, and care should be taken to determine what the cause of this fluctuation might be.

Table 9: Comparison by Method 3

This table summarizes the previous page with your historical information by showing past, present, and projected future enrollment. The small numbers indicate the percentage difference between that year's enrollment and the current year's. The key numbers on this table are the percent changes for the summary groups for the future. These indicate the extent, as a percentage of this year's enrollment, to which your district will either lose (red numbers) or gain (blue numbers) enrollment.

Table 10: 10 Year Projections by Method 3

This table shows what enrollment will look like ten years into the future. You will notice that, starting six years into the future, some grades are omitted from the report. This is because birth rates, which are the base from which the projections work, are very difficult to project with any accuracy. Without birth data, Kindergarten enrollment becomes impossible to project six years from now, and each higher grade falls out the next year.

Although this gives only a partial glimpse of your enrollment ten years from now, we feel it is better to exclude some information than to possibly be misleading with inaccurate data.

Enrollment graphs as projected by Method 3

The third method graphs depict the information from the past three tables in graphic form. Each graph deals with one of your district's building levels. The last chart is usually reserved for total district enrollment. The upper chart on each page tracks your enrollment level, while the lower tracks the percentage difference between your current enrollment and the enrollment in that year.

Cross – Method Charts

These charts (one for each grade grouping) look at your projected enrollment across the three projection methods. Each chart begins with your current enrollment with a separate line for each method tracing your projection out five years into the future. When all three lines stay close together, your projected enrollment does not significantly vary across the different projection methods.

However, when the three lines diverge, the three methods are projecting relatively different enrollments. Care should be taken in choosing the correct method on which to rely.

Tables 11-16: Teacher Projections

These six tables use projection Method 1, as the most conservative of the three methods, to forecast teacher needs for the next ten years. The tables are arranged according to selected Teacher: Pupil ratios (1:22 thru 1:32). As with the ten year enrollment projections, lower grades fall out of the system in later years due to projection limitations.

Table 17: Method Accuracy

This table is used to show which of the three projections methods has the best predictive power for your district. This is done by creating a projection of THIS YEAR'S enrollment using past data and then comparing it to this year's actual enrollment. The method showing the smallest total (K-12) error should have the best ability to predict what your future enrollment will be.

As in other tables, projections below the current year's level are shown in red, and those above are shown in blue.

Births for Monroe County

<u>YEAR</u>	<u>BIRTHS</u>
1997	511
1998	549
1999	510
2000	602
2001	593
2002	559
2003	624
2004	587
2005	615
2006	631
2007	640

Tomah Area School District

Table 1 - Actual Enrollments

GRADE	2002-03	2003-04	2004-05	2005-06	2006-07	2007-08
K	170	182 <i>33.15</i>	209 <i>40.98</i>	208 <i>34.55</i>	229 <i>38.62</i>	178 <i>31.84</i>
1	203	183 <i>107.65</i>	177 <i>97.25</i>	214 <i>102.39</i>	211 <i>101.44</i>	231 <i>100.87</i>
2	196	208 <i>102.46</i>	188 <i>102.73</i>	189 <i>106.78</i>	217 <i>101.40</i>	218 <i>103.32</i>
3	200	192 <i>97.96</i>	214 <i>102.88</i>	195 <i>103.72</i>	192 <i>101.59</i>	222 <i>102.30</i>
4	202	205 <i>102.50</i>	203 <i>105.73</i>	220 <i>102.80</i>	194 <i>99.49</i>	197 <i>102.60</i>
5	222	205 <i>101.49</i>	215 <i>104.88</i>	214 <i>105.42</i>	220 <i>100.00</i>	202 <i>104.12</i>
6	211	225 <i>101.35</i>	226 <i>110.24</i>	214 <i>99.53</i>	225 <i>105.14</i>	243 <i>110.45</i>
7	248	211 <i>100.00</i>	234 <i>104.00</i>	229 <i>101.33</i>	211 <i>98.60</i>	220 <i>97.78</i>
8	241	249 <i>100.40</i>	201 <i>95.26</i>	248 <i>105.98</i>	222 <i>96.94</i>	223 <i>105.69</i>
9	263	277 <i>114.94</i>	293 <i>117.67</i>	248 <i>123.38</i>	288 <i>116.13</i>	266 <i>119.82</i>
10	271	263 <i>100.00</i>	272 <i>98.19</i>	288 <i>98.29</i>	240 <i>96.77</i>	285 <i>98.96</i>
11	262	267 <i>98.52</i>	251 <i>95.44</i>	275 <i>101.10</i>	280 <i>97.22</i>	237 <i>98.75</i>
12	266	251 <i>95.80</i>	258 <i>96.63</i>	249 <i>99.20</i>	295 <i>107.27</i>	288 <i>102.86</i>

K-5	1,193	1,175	1,206	1,240	1,263	1,248
6-8	700	685	661	691	658	686
9-12	1,062	1,058	1,074	1,060	1,103	1,076
K-12	2,955	2,918	2,941	2,991	3,024	3,010

Tomah Area School District

Table 2 - Enrollment Projected Five Years
Method 1

GRADE	2008-09	2009-10	2010-11	2011-12	2012-13
K	224 <i>35.83</i>	210 <i>35.83</i>	220 <i>35.83</i>	226 <i>35.83</i>	229 <i>35.83</i>
1	181 <i>101.92</i>	228 <i>101.92</i>	214 <i>101.92</i>	224 <i>101.92</i>	230 <i>101.92</i>
2	239 <i>103.34</i>	187 <i>103.34</i>	236 <i>103.34</i>	221 <i>103.34</i>	231 <i>103.34</i>
3	222 <i>101.69</i>	243 <i>101.69</i>	190 <i>101.69</i>	240 <i>101.69</i>	225 <i>101.69</i>
4	228 <i>102.62</i>	228 <i>102.62</i>	249 <i>102.62</i>	195 <i>102.62</i>	246 <i>102.62</i>
5	203 <i>103.18</i>	235 <i>103.18</i>	235 <i>103.18</i>	257 <i>103.18</i>	201 <i>103.18</i>
6	213 <i>105.35</i>	214 <i>105.35</i>	248 <i>105.35</i>	248 <i>105.35</i>	271 <i>105.35</i>
7	244 <i>100.34</i>	214 <i>100.34</i>	215 <i>100.34</i>	249 <i>100.34</i>	249 <i>100.34</i>
8	222 <i>100.86</i>	246 <i>100.86</i>	216 <i>100.86</i>	217 <i>100.86</i>	251 <i>100.86</i>
9	264 <i>118.39</i>	263 <i>118.39</i>	291 <i>118.39</i>	256 <i>118.39</i>	257 <i>118.39</i>
10	262 <i>98.44</i>	260 <i>98.44</i>	259 <i>98.44</i>	286 <i>98.44</i>	252 <i>98.44</i>
11	280 <i>98.21</i>	257 <i>98.21</i>	255 <i>98.21</i>	254 <i>98.21</i>	281 <i>98.21</i>
12	238 <i>100.35</i>	281 <i>100.35</i>	258 <i>100.35</i>	256 <i>100.35</i>	255 <i>100.35</i>

K-5	1,297	1,331	1,344	1,363	1,362
6-8	679	674	679	714	771
9-12	1,044	1,061	1,063	1,052	1,045
K-12	3,020	3,066	3,086	3,129	3,178

Tomah Area School District

Table 3 - Comparison of Past and Projected Enrollments Method 1

GRADE	2002-03	2003-04	2004-05	2005-06	2006-07	2007-08	2008-09	2009-10	2010-11	2011-12	2012-13
K	170 -4.49%	182 +2.25%	209 +17.42%	208 +16.85%	229 +28.65%	178 +0.00%	224 +25.84%	210 +17.98%	220 +23.60%	226 +26.97%	229 +28.65%
1	203 -12.12%	183 -20.78%	177 -23.38%	214 -7.36%	211 -8.66%	231 +0.00%	181 -21.65%	228 -1.30%	214 -7.36%	224 -3.03%	230 -0.43%
2	196 -10.09%	208 -4.59%	188 -13.76%	189 -13.30%	217 -0.46%	218 +0.00%	239 +9.63%	187 -14.22%	236 +8.26%	221 +1.38%	231 +5.96%
3	200 -9.91%	192 -13.51%	214 -3.60%	195 -12.16%	192 -13.51%	222 +0.00%	222 +0.00%	243 +9.46%	190 -14.41%	240 +8.11%	225 +1.35%
4	202 +2.54%	205 +4.06%	203 +3.05%	220 +11.68%	194 -1.52%	197 +0.00%	228 +15.74%	228 +15.74%	249 +26.40%	195 -1.02%	246 +24.87%
5	222 +9.90%	205 +1.49%	215 +6.44%	214 +5.94%	220 +8.91%	202 +0.00%	203 +0.50%	235 +16.34%	235 +16.34%	257 +27.23%	201 -0.50%
6	211 -13.17%	225 -7.41%	226 -7.00%	214 -11.93%	225 -7.41%	243 +0.00%	213 -12.35%	214 -11.93%	248 +2.06%	248 +2.06%	271 +11.52%
7	248 +12.73%	211 -4.09%	234 +6.36%	229 +4.09%	211 -4.09%	220 +0.00%	244 +10.91%	214 -2.73%	215 -2.27%	249 +13.18%	249 +13.18%
8	241 +8.07%	249 +11.66%	201 -9.87%	248 +11.21%	222 -0.45%	223 +0.00%	222 -0.45%	246 +10.31%	216 -3.14%	217 -2.69%	251 +12.56%
9	263 -1.13%	277 +4.14%	293 +10.15%	248 -6.77%	288 +8.27%	266 +0.00%	264 -0.75%	263 -1.13%	291 +9.40%	256 -3.76%	257 -3.38%
10	271 -4.91%	263 -7.72%	272 -4.56%	288 +1.05%	240 -15.79%	285 +0.00%	262 -8.07%	260 -8.77%	259 -9.12%	286 +0.35%	252 -11.58%
11	262 +10.55%	267 +12.66%	251 +5.91%	275 +16.03%	280 +18.14%	237 +0.00%	280 +18.14%	257 +8.44%	255 +7.59%	254 +7.17%	281 +18.57%
12	266 -7.64%	251 -12.85%	258 -10.42%	249 -13.54%	295 +2.43%	288 +0.00%	238 -17.36%	281 -2.43%	258 -10.42%	256 -11.11%	255 -11.46%

K-5	1,193 -4.41%	1,175 -5.85%	1,206 -3.37%	1,240 -0.64%	1,263 +1.20%	1,248 +0.00%	1,297 +3.93%	1,331 +6.65%	1,344 +7.69%	1,363 +9.21%	1,362 +9.13%
6-8	700 +2.04%	685 -0.15%	661 -3.64%	691 +0.73%	658 -4.08%	686 +0.00%	679 -1.02%	674 -1.75%	679 -1.02%	714 +4.08%	771 +12.39%
9-12	1,062 -1.30%	1,058 -1.67%	1,074 -0.19%	1,060 -1.49%	1,103 +2.51%	1,076 +0.00%	1,044 -2.97%	1,061 -1.39%	1,063 -1.21%	1,052 -2.23%	1,045 -2.88%
K-12	2,955 -1.83%	2,918 -3.06%	2,941 -2.29%	2,991 -0.63%	3,024 +0.47%	3,010 +0.00%	3,020 +0.33%	3,066 +1.86%	3,086 +2.52%	3,129 +3.95%	3,178 +5.58%

Tomah Area School District

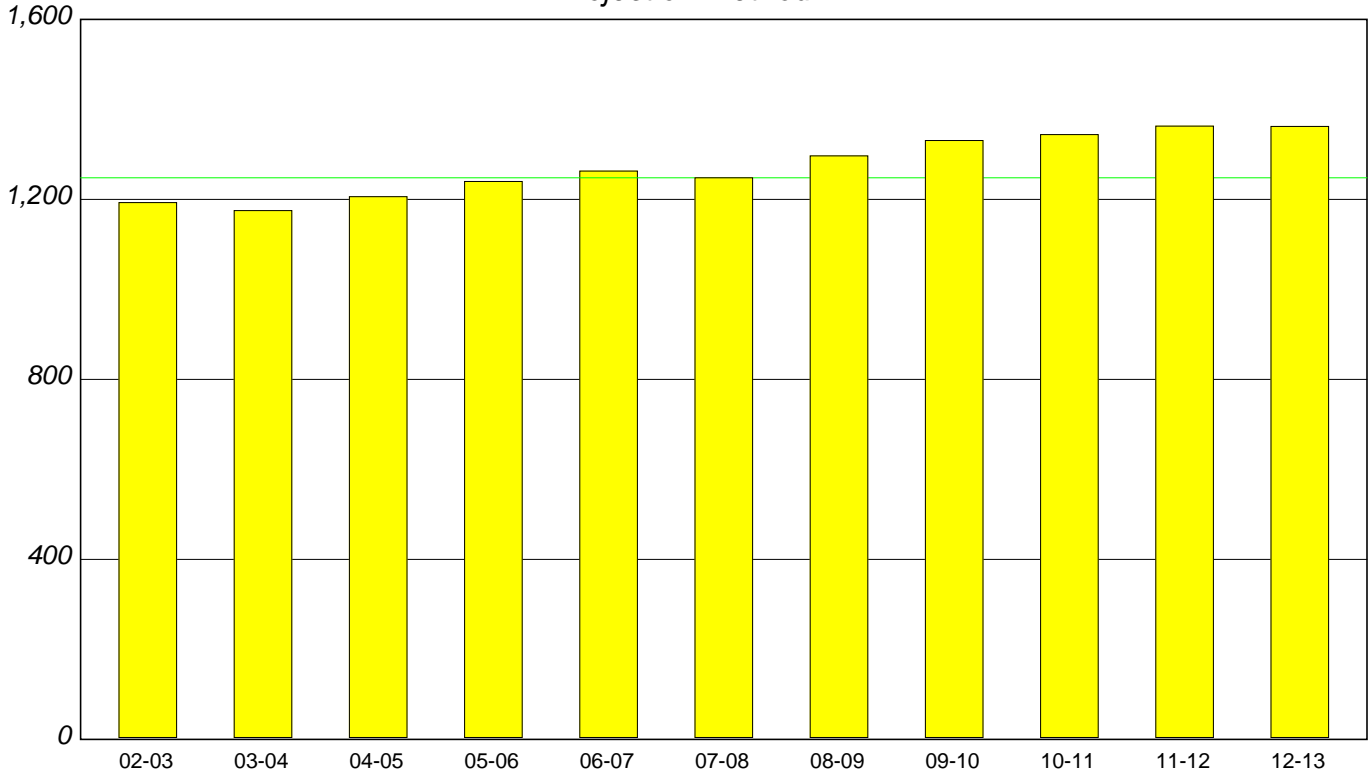
Table 4 - Enrollment Projected Ten Years
Method 1

GRADE	2008-09	2009-10	2010-11	2011-12	2012-13	2013-14	2014-15	2015-16	2016-17	2017-18
K	224	210	220	226	229	0	0	0	0	0
1	181	228	214	224	230	233	0	0	0	0
2	239	187	236	221	231	238	241	0	0	0
3	222	243	190	240	225	235	242	245	0	0
4	228	228	249	195	246	231	241	248	251	0
5	203	235	235	257	201	254	238	249	256	259
6	213	214	248	248	271	212	268	251	262	270
7	244	214	215	249	249	272	213	269	252	263
8	222	246	216	217	251	251	274	215	271	254
9	264	263	291	256	257	297	297	324	255	321
10	262	260	259	286	252	253	292	292	319	251
11	280	257	255	254	281	247	248	287	287	313
12	238	281	258	256	255	282	248	249	288	288

Tomah Area School District

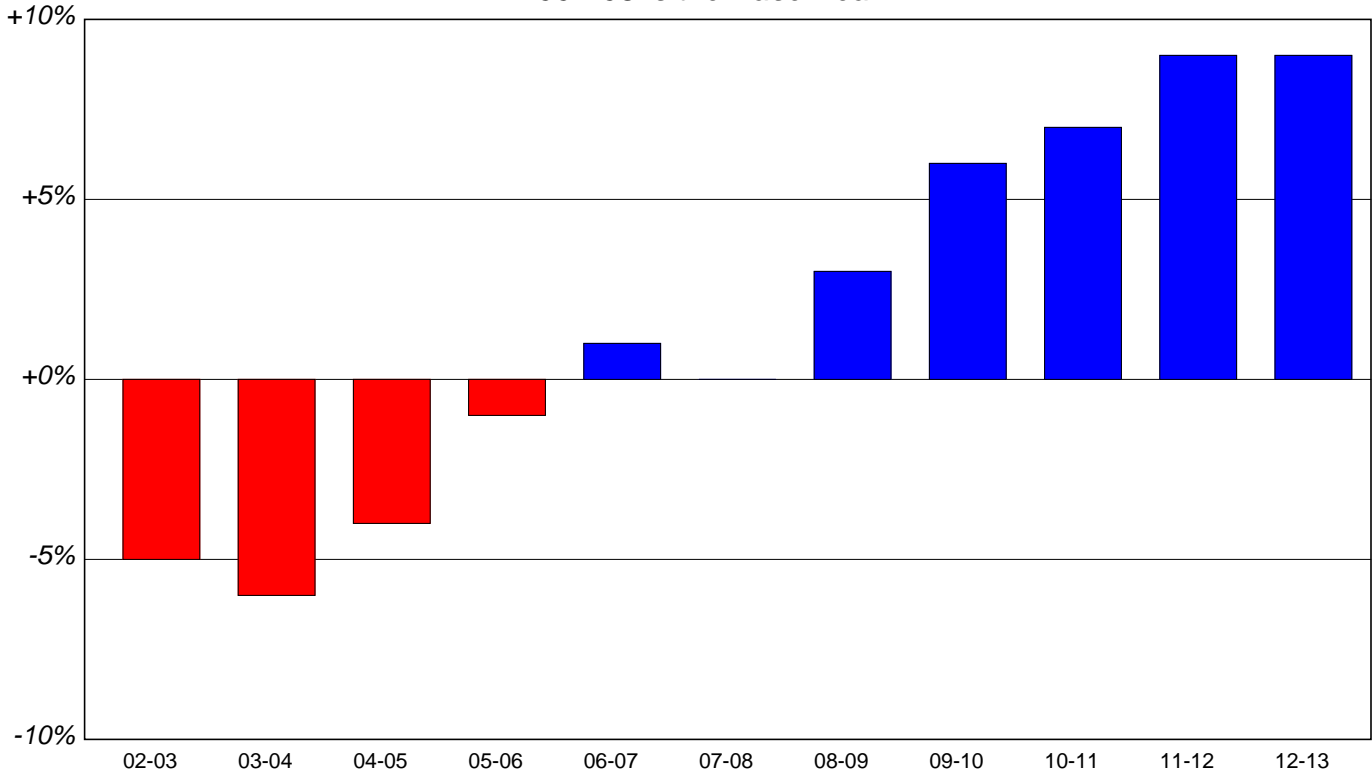
Graph 1-A: K-5 Enrollment 2002-2013

Projection Method 1



Graph 1-B: % Change in K-5 Enrollment

2007-08 is the Base Year



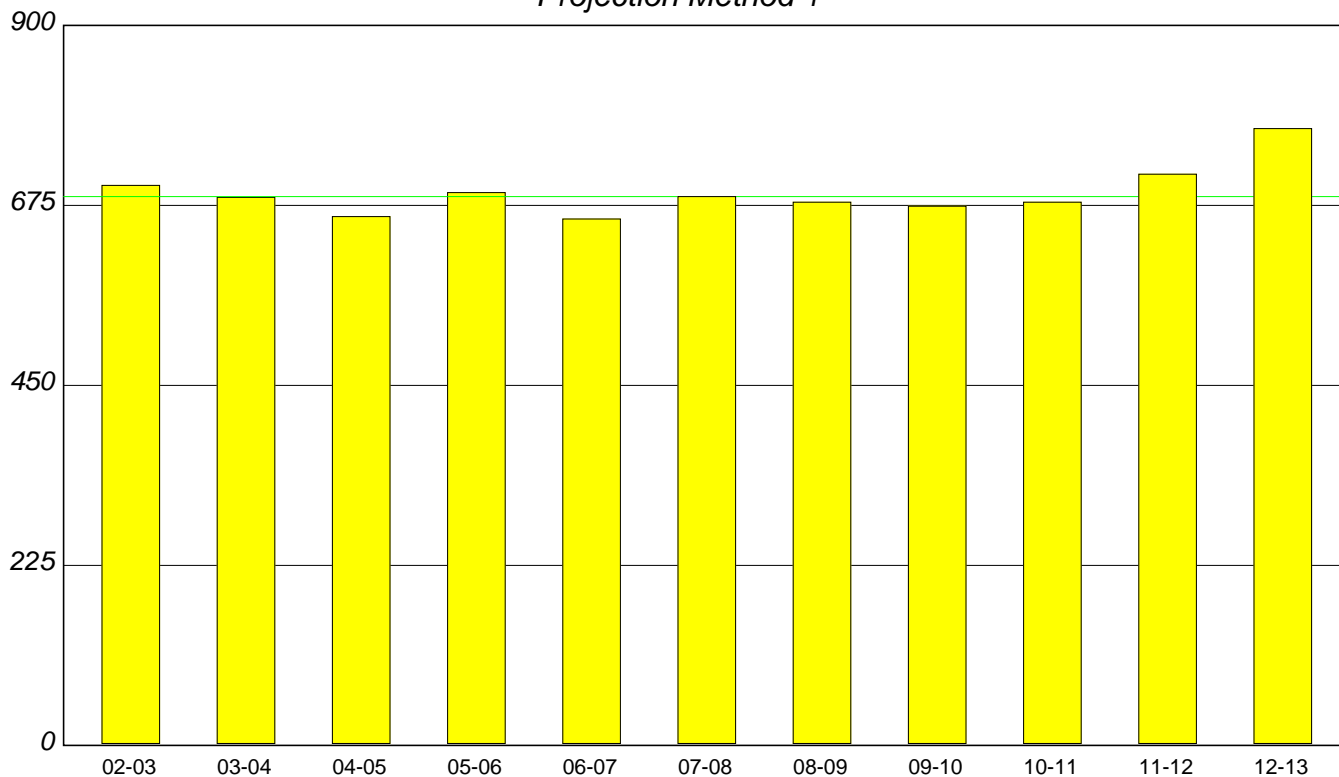
NOTE:

See Table 3 for specific enrollment numbers

Tomah Area School District

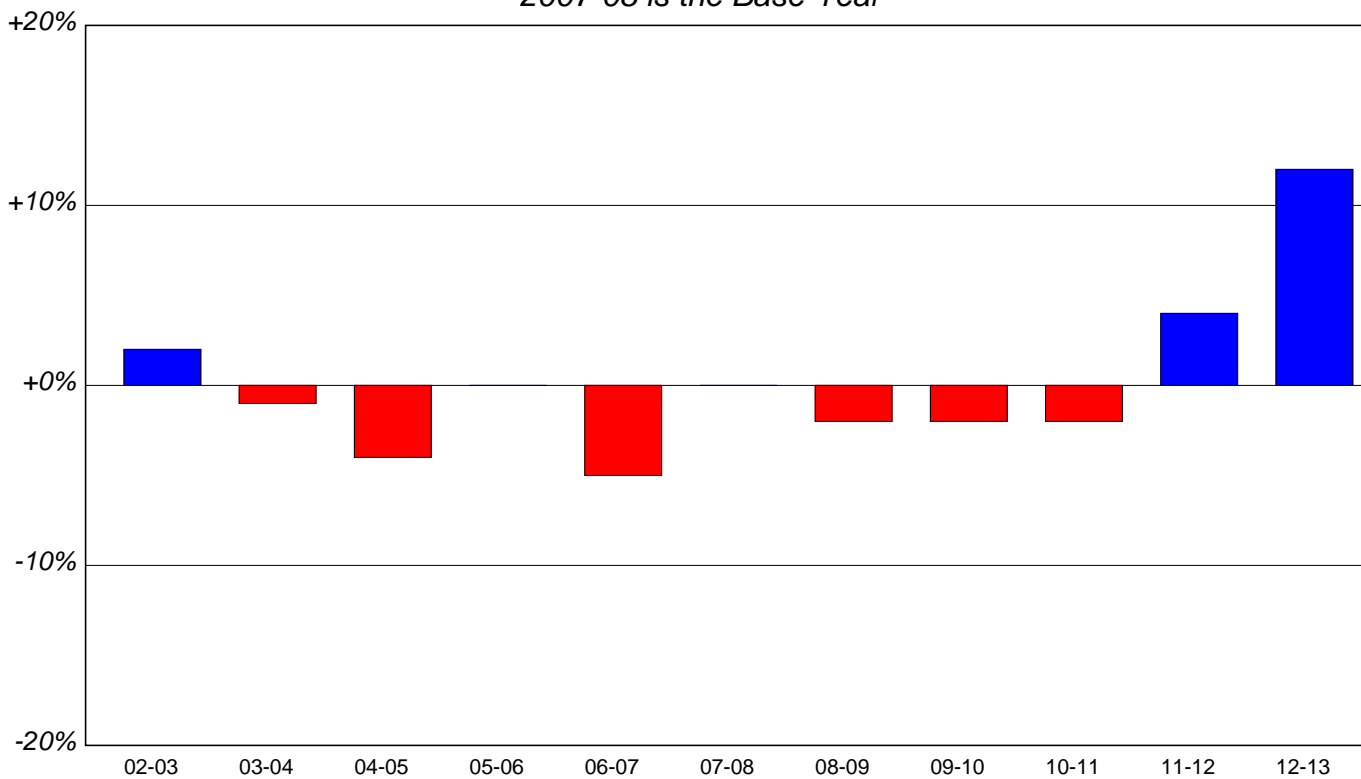
Graph 2-A: 6-8 Enrollment 2002-2013

Projection Method 1



Graph 2-B: % Change in 6-8 Enrollment

2007-08 is the Base Year



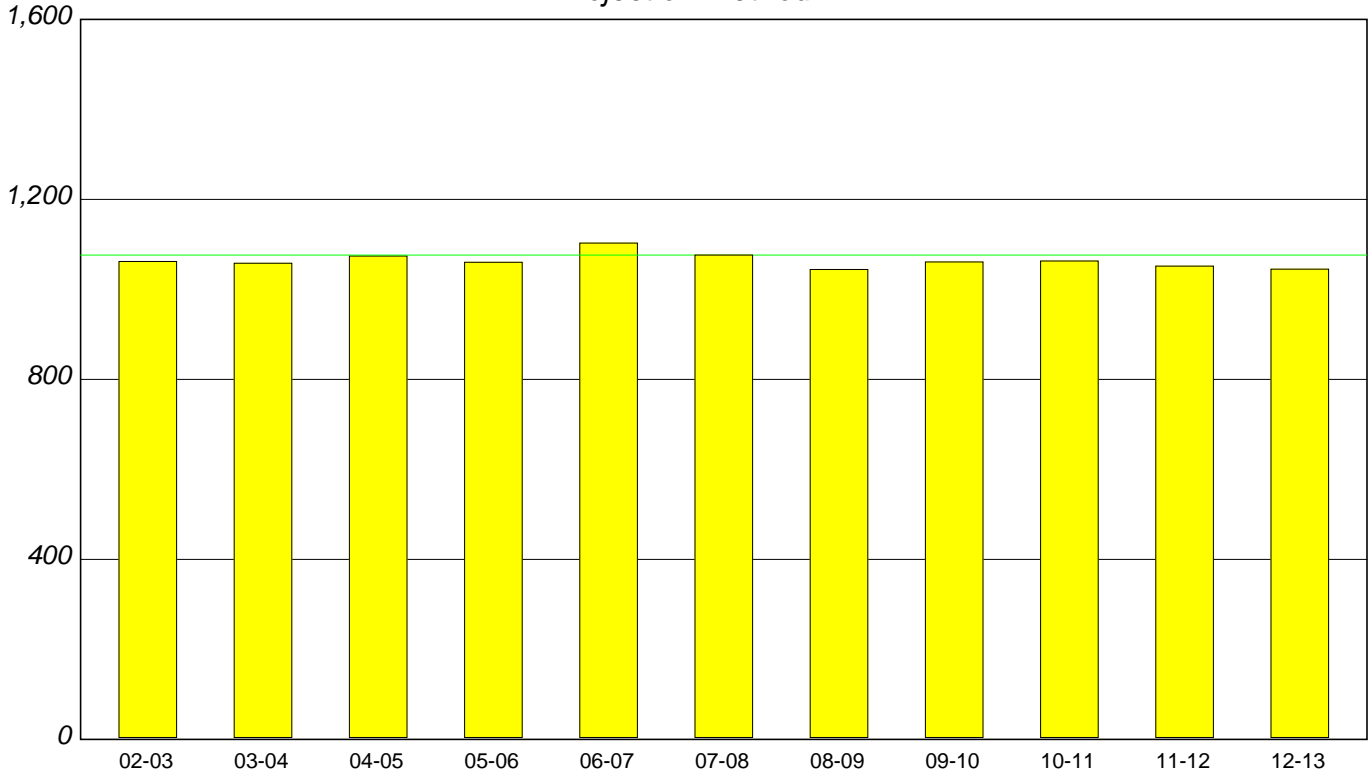
NOTE:

See Table 3 for specific enrollment numbers

Tomah Area School District

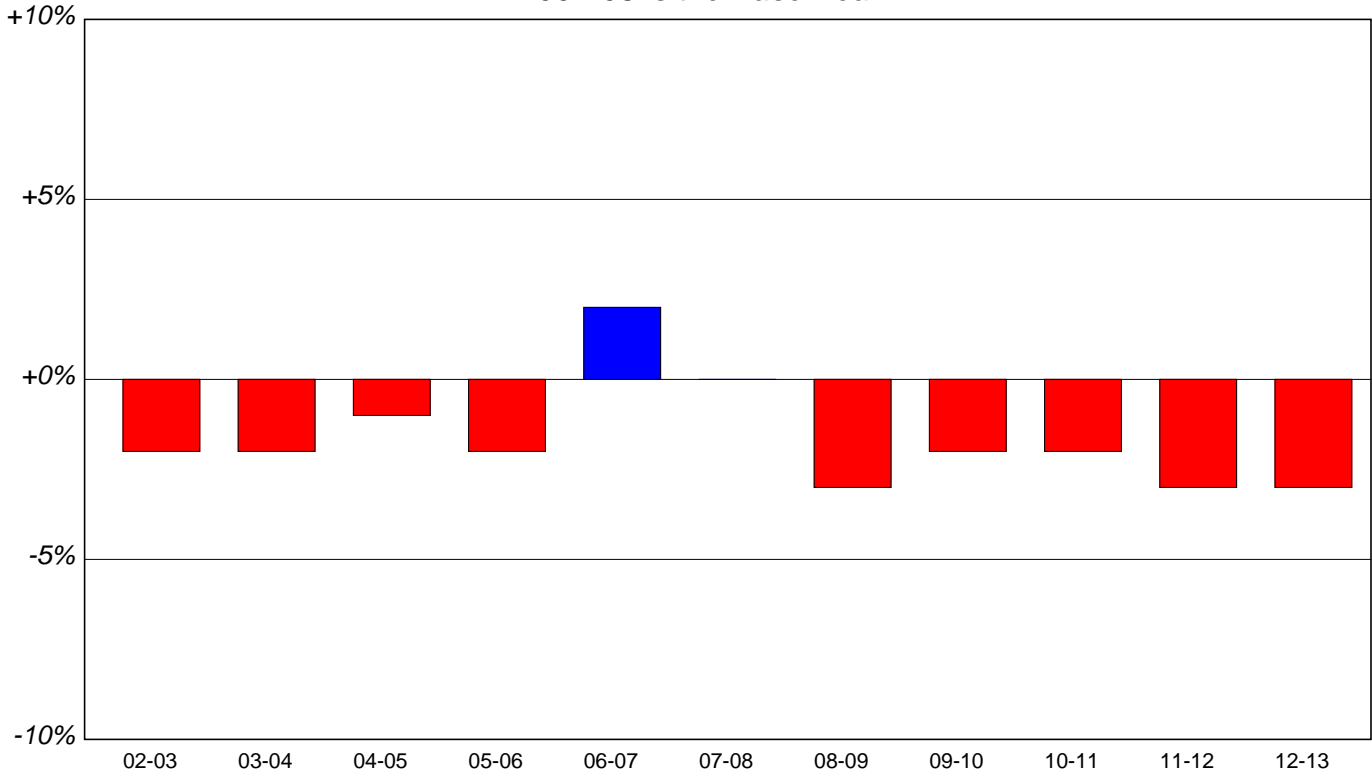
Graph 3-A: 9-12 Enrollment 2002-2013

Projection Method 1



Graph 3-B: % Change in 9-12 Enrollment

2007-08 is the Base Year



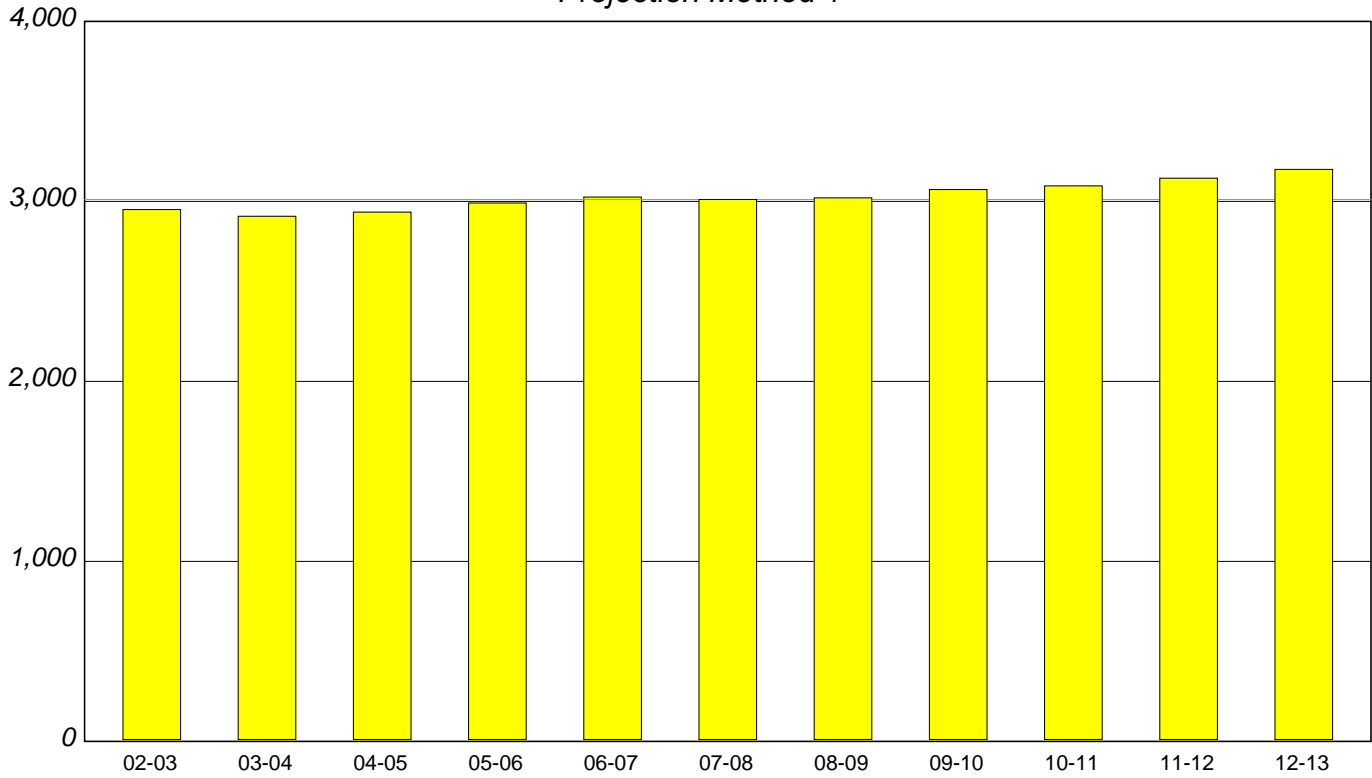
NOTE:

See Table 3 for specific enrollment numbers

Tomah Area School District

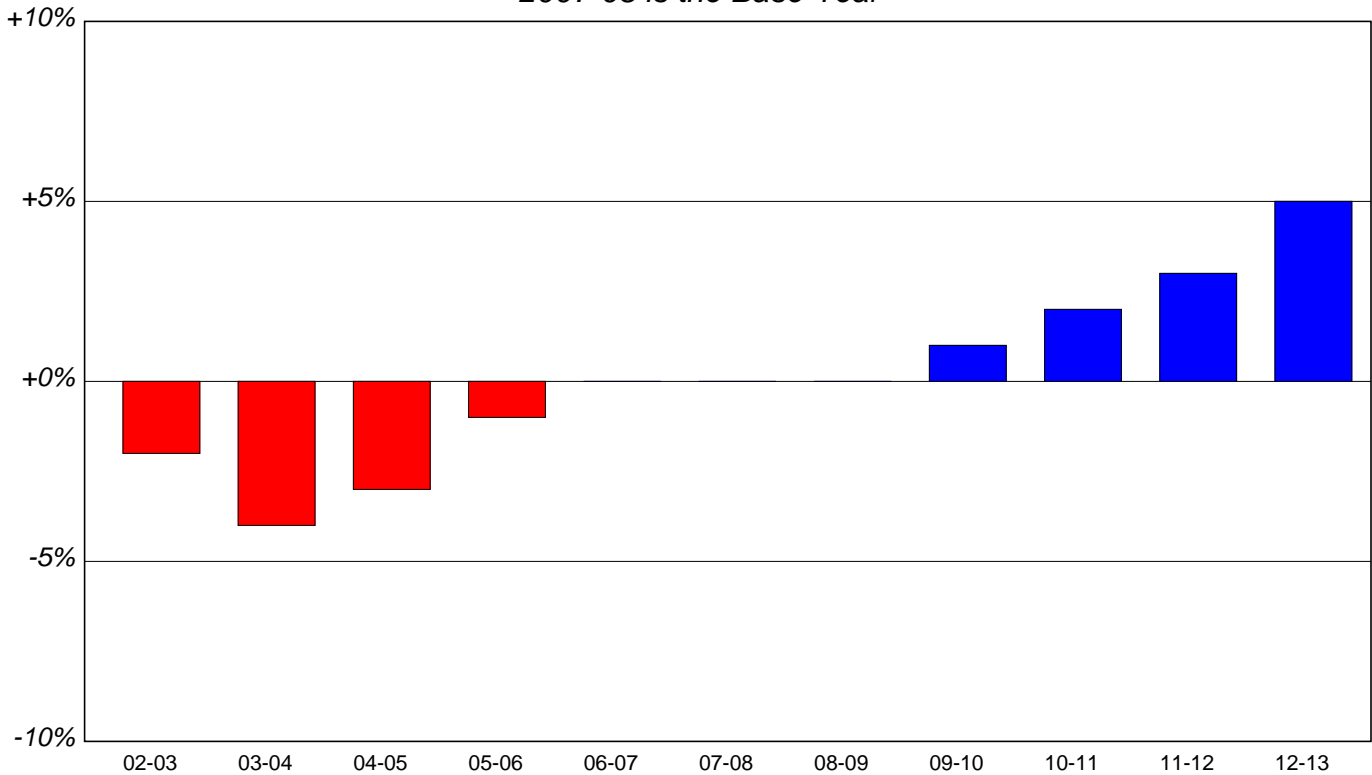
Graph 4-A: K-12 Enrollment 2002-2013

Projection Method 1



Graph 4-B: % Change in K-12 Enrollment

2007-08 is the Base Year



NOTE:

See Table 3 for specific enrollment numbers

Tomah Area School District

Table 5 - Enrollment Projected Five Years
Method 2

GRADE	2008-09	2009-10	2010-11	2011-12	2012-13
K	199 <i>31.84</i>	187 <i>31.84</i>	196 <i>31.84</i>	201 <i>31.84</i>	204 <i>31.84</i>
1	180 <i>100.87</i>	201 <i>100.87</i>	189 <i>100.87</i>	198 <i>100.87</i>	203 <i>100.87</i>
2	239 <i>103.32</i>	186 <i>103.32</i>	208 <i>103.32</i>	195 <i>103.32</i>	205 <i>103.32</i>
3	223 <i>102.30</i>	245 <i>102.30</i>	190 <i>102.30</i>	213 <i>102.30</i>	199 <i>102.30</i>
4	228 <i>102.60</i>	229 <i>102.60</i>	251 <i>102.60</i>	195 <i>102.60</i>	219 <i>102.60</i>
5	205 <i>104.12</i>	237 <i>104.12</i>	238 <i>104.12</i>	261 <i>104.12</i>	203 <i>104.12</i>
6	223 <i>110.45</i>	226 <i>110.45</i>	262 <i>110.45</i>	263 <i>110.45</i>	288 <i>110.45</i>
7	238 <i>97.78</i>	218 <i>97.78</i>	221 <i>97.78</i>	256 <i>97.78</i>	257 <i>97.78</i>
8	233 <i>105.69</i>	252 <i>105.69</i>	230 <i>105.69</i>	234 <i>105.69</i>	271 <i>105.69</i>
9	267 <i>119.82</i>	279 <i>119.82</i>	302 <i>119.82</i>	276 <i>119.82</i>	280 <i>119.82</i>
10	263 <i>98.96</i>	264 <i>98.96</i>	276 <i>98.96</i>	299 <i>98.96</i>	273 <i>98.96</i>
11	281 <i>98.75</i>	260 <i>98.75</i>	261 <i>98.75</i>	273 <i>98.75</i>	295 <i>98.75</i>
12	244 <i>102.86</i>	289 <i>102.86</i>	267 <i>102.86</i>	268 <i>102.86</i>	281 <i>102.86</i>

K-5	1,274	1,285	1,272	1,263	1,233
6-8	694	696	713	753	816
9-12	1,055	1,092	1,106	1,116	1,129
K-12	3,023	3,073	3,091	3,132	3,178

Tomah Area School District

Table 6 - Comparison of Past and Projected Enrollments Method 2

GRADE	2002-03	2003-04	2004-05	2005-06	2006-07	2007-08	2008-09	2009-10	2010-11	2011-12	2012-13
K	170 -4.49%	182 +2.25%	209 +17.42%	208 +16.85%	229 +28.65%	178 +0.00%	199 +11.80%	187 +5.06%	196 +10.11%	201 +12.92%	204 +14.61%
1	203 -12.12%	183 -20.78%	177 -23.38%	214 -7.36%	211 -8.66%	231 +0.00%	180 -22.08%	201 -12.99%	189 -18.18%	198 -14.29%	203 -12.12%
2	196 -10.09%	208 -4.59%	188 -13.76%	189 -13.30%	217 -0.46%	218 +0.00%	239 +9.63%	186 -14.68%	208 -4.59%	195 -10.55%	205 -5.96%
3	200 -9.91%	192 -13.51%	214 -3.60%	195 -12.16%	192 -13.51%	222 +0.00%	223 +0.45%	245 +10.36%	190 -14.41%	213 -4.05%	199 -10.36%
4	202 +2.54%	205 +4.06%	203 +3.05%	220 +11.68%	194 -1.52%	197 +0.00%	228 +15.74%	229 +16.24%	251 +27.41%	195 -1.02%	219 +11.17%
5	222 +9.90%	205 +1.49%	215 +6.44%	214 +5.94%	220 +8.91%	202 +0.00%	205 +1.49%	237 +17.33%	238 +17.82%	261 +29.21%	203 +0.50%
6	211 -13.17%	225 -7.41%	226 -7.00%	214 -11.93%	225 -7.41%	243 +0.00%	223 -8.23%	226 -7.00%	262 +7.82%	263 +8.23%	288 +18.52%
7	248 +12.73%	211 -4.09%	234 +6.36%	229 +4.09%	211 -4.09%	220 +0.00%	238 +8.18%	218 -0.91%	221 +0.45%	256 +16.36%	257 +16.82%
8	241 +8.07%	249 +11.66%	201 -9.87%	248 +11.21%	222 -0.45%	223 +0.00%	233 +4.48%	252 +13.00%	230 +3.14%	234 +4.93%	271 +21.52%
9	263 -1.13%	277 +4.14%	293 +10.15%	248 -6.77%	288 +8.27%	266 +0.00%	267 +0.38%	279 +4.89%	302 +13.53%	276 +3.76%	280 +5.26%
10	271 -4.91%	263 -7.72%	272 -4.56%	288 +1.05%	240 -15.79%	285 +0.00%	263 -7.72%	264 -7.37%	276 -3.16%	299 +4.91%	273 -4.21%
11	262 +10.55%	267 +12.66%	251 +5.91%	275 +16.03%	280 +18.14%	237 +0.00%	281 +18.57%	260 +9.70%	261 +10.13%	273 +15.19%	295 +24.47%
12	266 -7.64%	251 -12.85%	258 -10.42%	249 -13.54%	295 +2.43%	288 +0.00%	244 -15.28%	289 +0.35%	267 -7.29%	268 -6.94%	281 -2.43%

K-5	1,193 -4.41%	1,175 -5.85%	1,206 -3.37%	1,240 -0.64%	1,263 +1.20%	1,248 +0.00%	1,274 +2.08%	1,285 +2.96%	1,272 +1.92%	1,263 +1.20%	1,233 -1.20%
6-8	700 +2.04%	685 -0.15%	661 -3.64%	691 +0.73%	658 -4.08%	686 +0.00%	694 +1.17%	696 +1.46%	713 +3.94%	753 +9.77%	816 +18.95%
9-12	1,062 -1.30%	1,058 -1.67%	1,074 -0.19%	1,060 -1.49%	1,103 +2.51%	1,076 +0.00%	1,055 -1.95%	1,092 +1.49%	1,106 +2.79%	1,116 +3.72%	1,129 +4.93%
K-12	2,955 -1.83%	2,918 -3.06%	2,941 -2.29%	2,991 -0.63%	3,024 +0.47%	3,010 +0.00%	3,023 +0.43%	3,073 +2.09%	3,091 +2.69%	3,132 +4.05%	3,178 +5.58%

Tomah Area School District

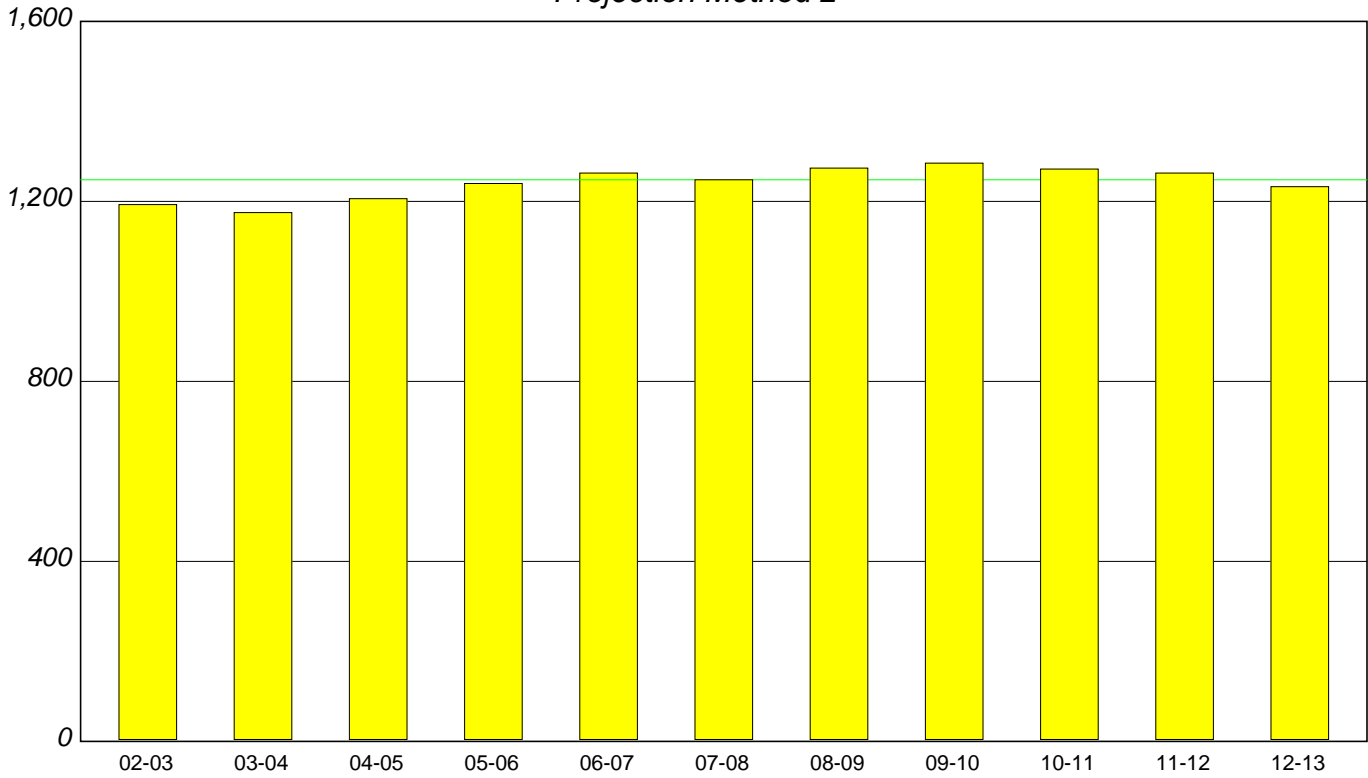
Table 7 - Enrollment Projected Ten Years
Method 2

GRADE	2008-09	2009-10	2010-11	2011-12	2012-13	2013-14	2014-15	2015-16	2016-17	2017-18
K	199	187	196	201	204	0	0	0	0	0
1	180	201	189	198	203	206	0	0	0	0
2	239	186	208	195	205	210	213	0	0	0
3	223	245	190	213	199	210	215	218	0	0
4	228	229	251	195	219	204	215	221	224	0
5	205	237	238	261	203	228	212	224	230	233
6	223	226	262	263	288	224	252	234	247	254
7	238	218	221	256	257	282	219	246	229	242
8	233	252	230	234	271	272	298	231	260	242
9	267	279	302	276	280	325	326	357	277	312
10	263	264	276	299	273	277	322	323	353	274
11	281	260	261	273	295	270	274	318	319	349
12	244	289	267	268	281	303	278	282	327	328

Tomah Area School District

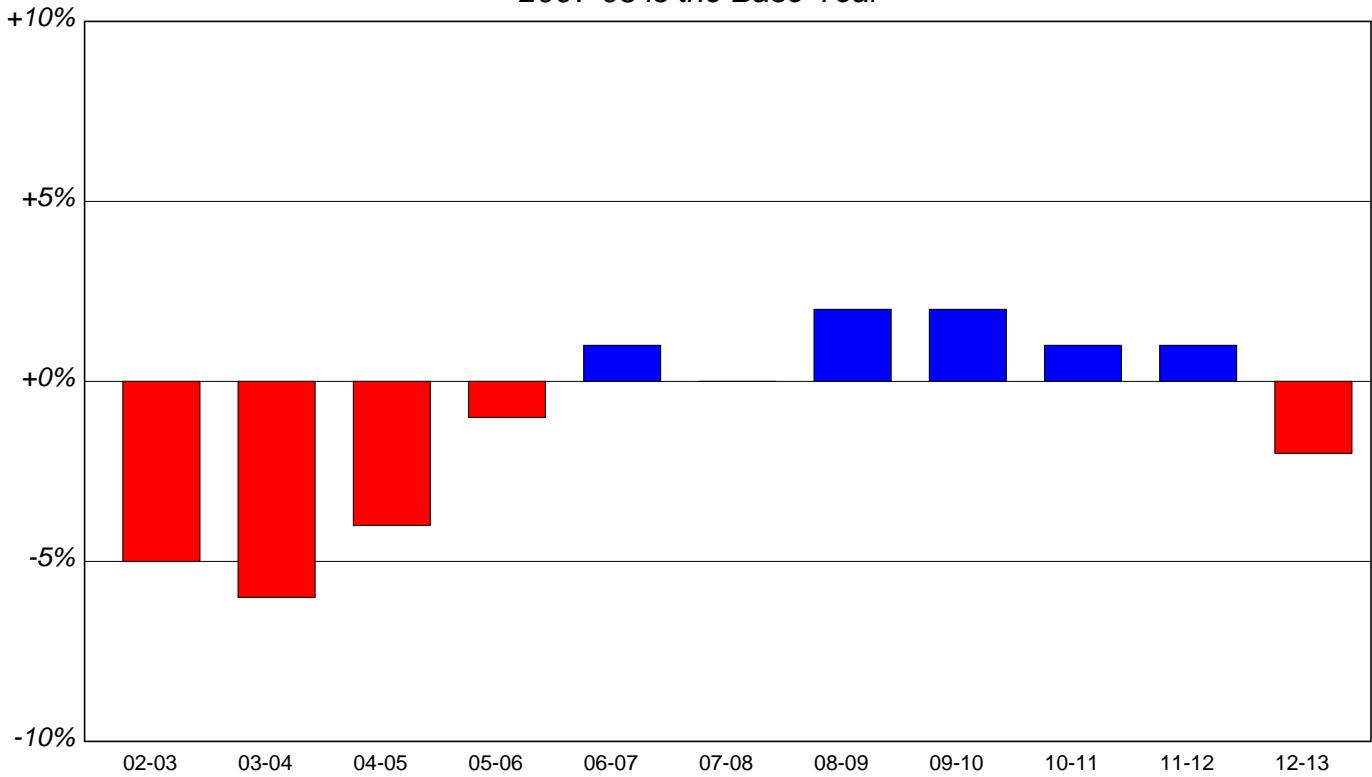
Graph 5-A: K-5 Enrollment 2002-2013

Projection Method 2



Graph 5-B: % Change in K-5 Enrollment

2007-08 is the Base Year



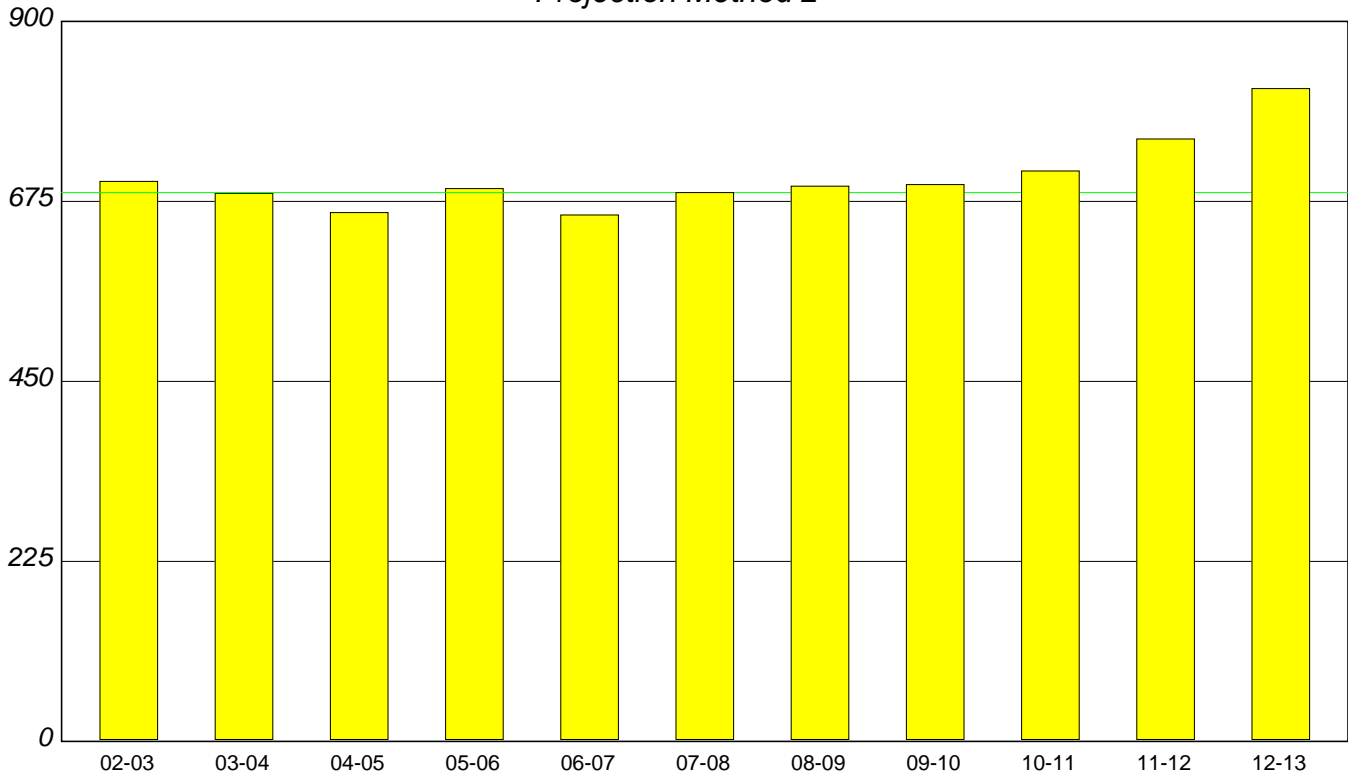
NOTE:

See Table 6 for specific enrollment numbers

Tomah Area School District

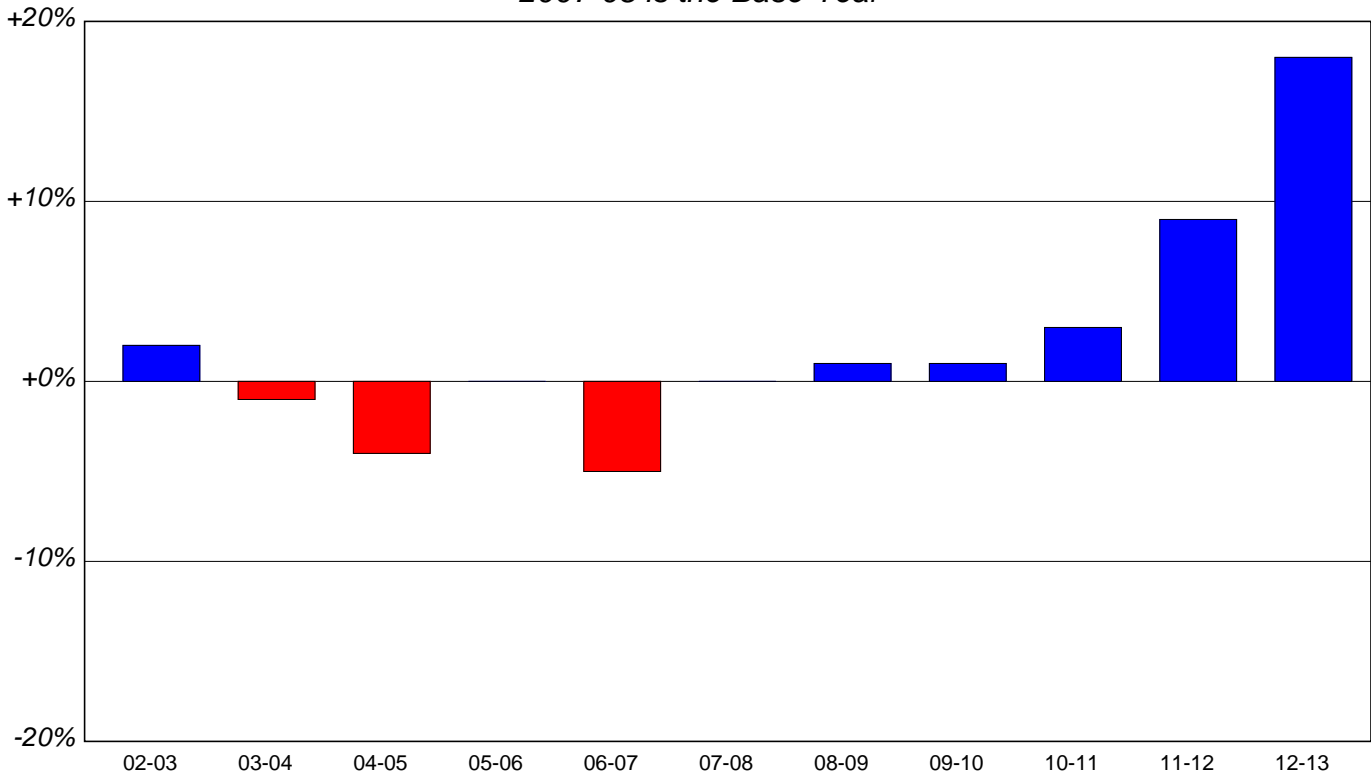
Graph 6-A: 6-8 Enrollment 2002-2013

Projection Method 2



Graph 6-B: % Change in 6-8 Enrollment

2007-08 is the Base Year



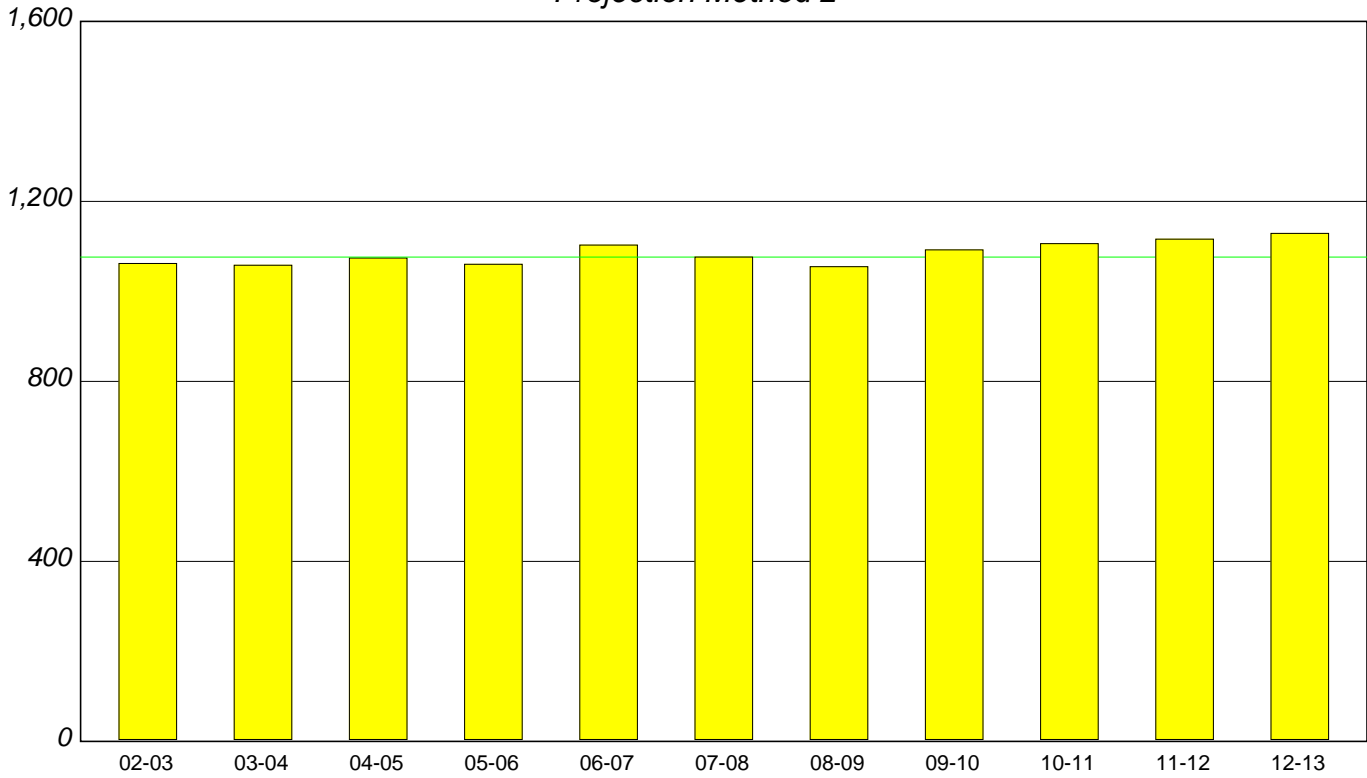
NOTE:

See Table 6 for specific enrollment numbers

Tomah Area School District

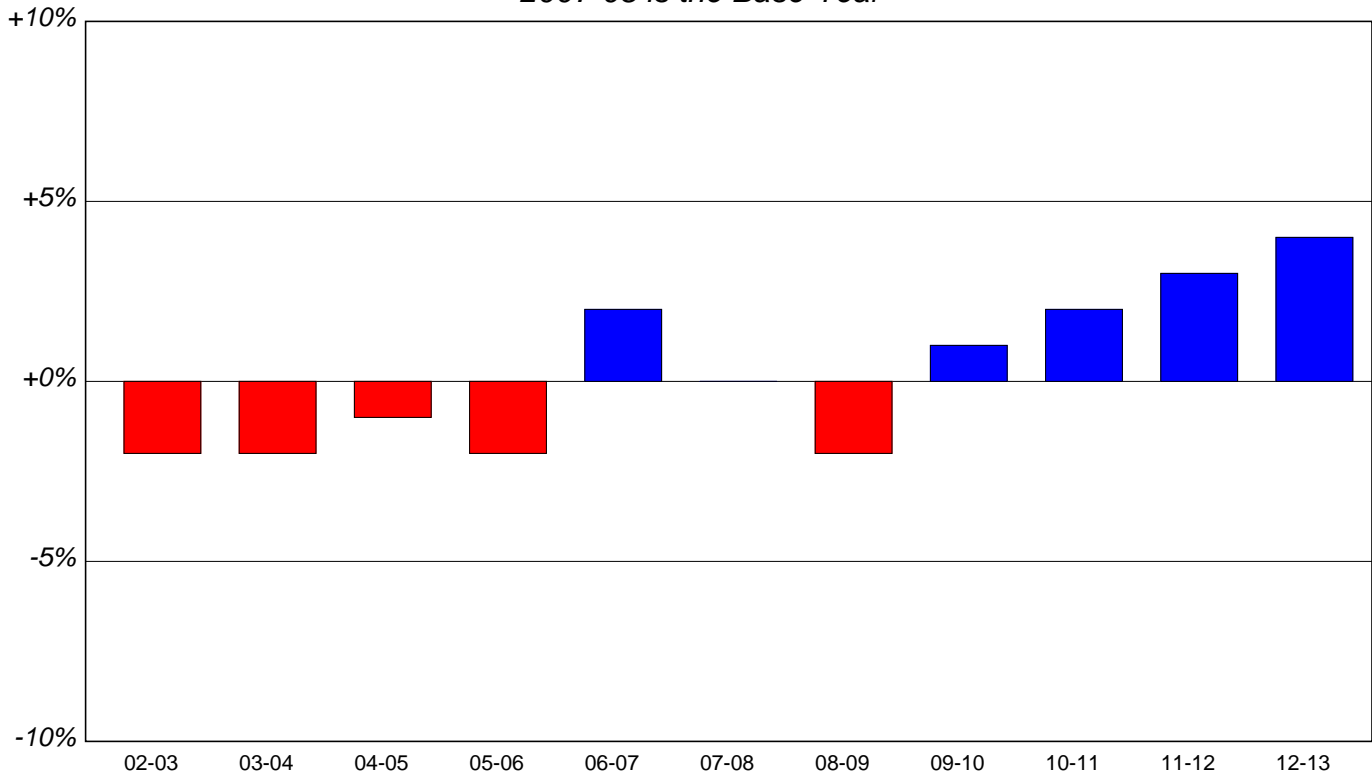
Graph 7-A: 9-12 Enrollment 2002-2013

Projection Method 2



Graph 7-B: % Change in 9-12 Enrollment

2007-08 is the Base Year



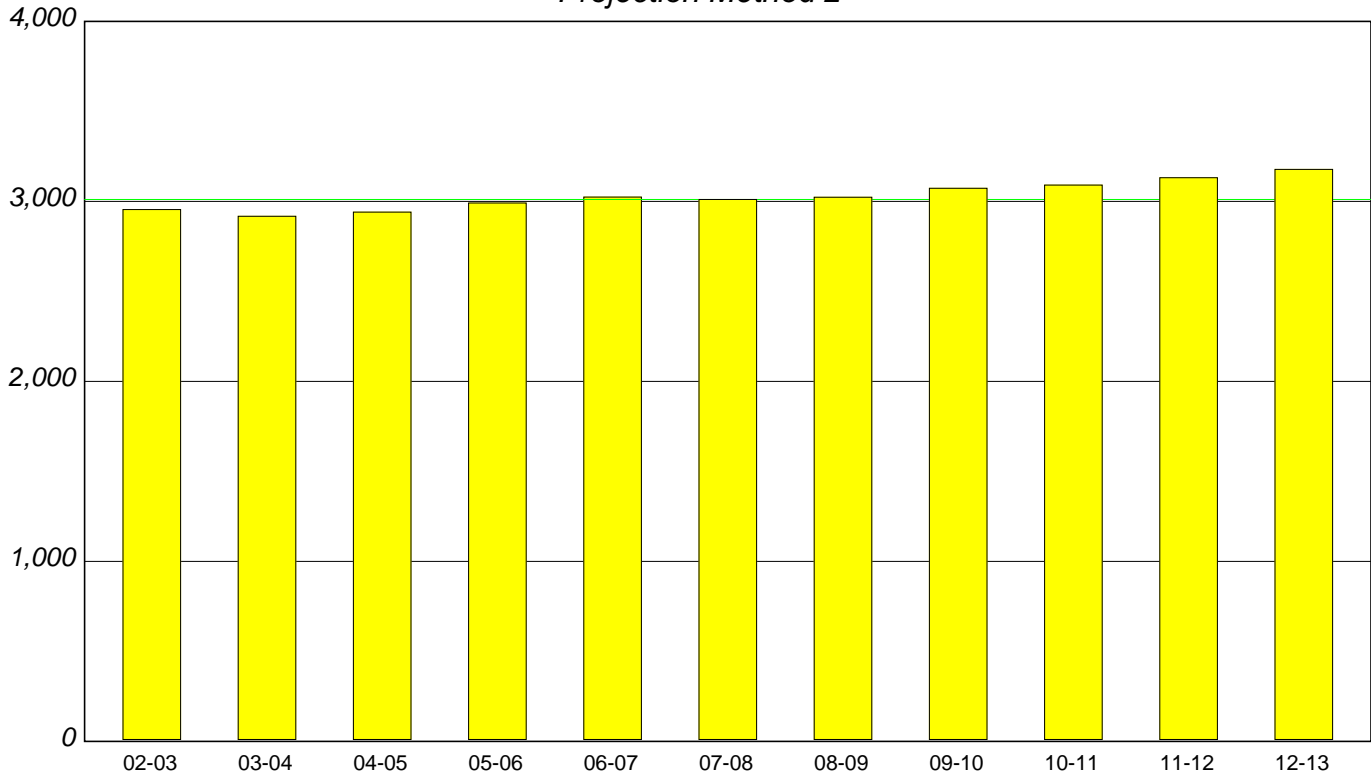
NOTE:

See Table 6 for specific enrollment numbers

Tomah Area School District

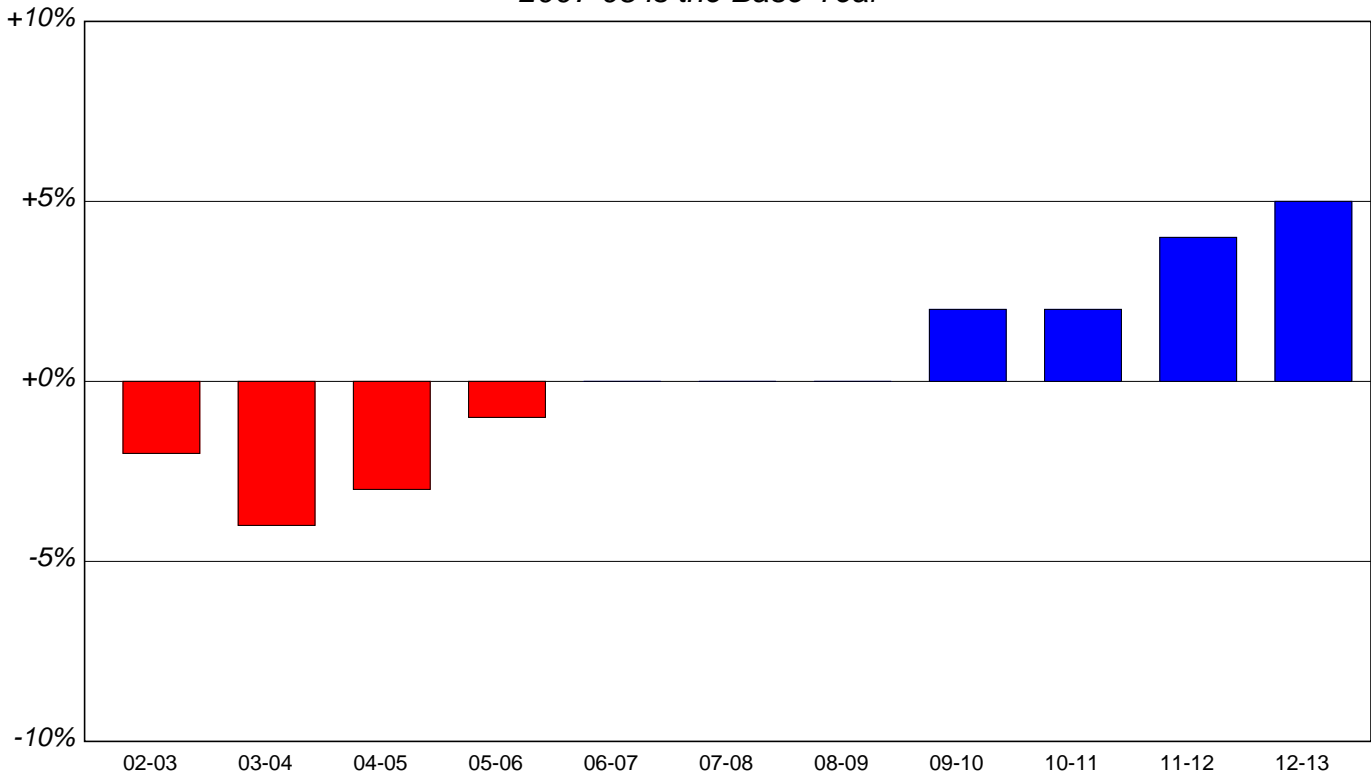
Graph 8-A: K-12 Enrollment 2002-2013

Projection Method 2



Graph 8-B: % Change in K-12 Enrollment

2007-08 is the Base Year



NOTE:

See Table 6 for specific enrollment numbers

Tomah Area School District

Table 8 - Enrollment Projected Five Years
Method 3

GRADE	2008-09	2009-10	2010-11	2011-12	2012-13
K	211 <i>33.84</i>	199 <i>33.84</i>	208 <i>33.84</i>	214 <i>33.84</i>	217 <i>33.84</i>
1	180 <i>101.40</i>	214 <i>101.40</i>	202 <i>101.40</i>	211 <i>101.40</i>	217 <i>101.40</i>
2	239 <i>103.33</i>	186 <i>103.33</i>	221 <i>103.33</i>	209 <i>103.33</i>	218 <i>103.33</i>
3	222 <i>102.00</i>	244 <i>102.00</i>	190 <i>102.00</i>	225 <i>102.00</i>	213 <i>102.00</i>
4	228 <i>102.61</i>	228 <i>102.61</i>	250 <i>102.61</i>	195 <i>102.61</i>	231 <i>102.61</i>
5	204 <i>103.65</i>	236 <i>103.65</i>	236 <i>103.65</i>	259 <i>103.65</i>	202 <i>103.65</i>
6	218 <i>107.90</i>	220 <i>107.90</i>	255 <i>107.90</i>	255 <i>107.90</i>	279 <i>107.90</i>
7	241 <i>99.06</i>	216 <i>99.06</i>	218 <i>99.06</i>	253 <i>99.06</i>	253 <i>99.06</i>
8	227 <i>103.27</i>	249 <i>103.27</i>	223 <i>103.27</i>	225 <i>103.27</i>	261 <i>103.27</i>
9	266 <i>119.10</i>	270 <i>119.10</i>	297 <i>119.10</i>	266 <i>119.10</i>	268 <i>119.10</i>
10	263 <i>98.70</i>	263 <i>98.70</i>	266 <i>98.70</i>	293 <i>98.70</i>	263 <i>98.70</i>
11	281 <i>98.48</i>	259 <i>98.48</i>	259 <i>98.48</i>	262 <i>98.48</i>	289 <i>98.48</i>
12	241 <i>101.61</i>	286 <i>101.61</i>	263 <i>101.61</i>	263 <i>101.61</i>	266 <i>101.61</i>

K-5	1,284	1,307	1,307	1,313	1,298
6-8	686	685	696	733	793
9-12	1,051	1,078	1,085	1,084	1,086
K-12	3,021	3,070	3,088	3,130	3,177

Tomah Area School District

Table 9 - Comparison of Past and Projected Enrollments Method 3

GRADE	2002-03	2003-04	2004-05	2005-06	2006-07	2007-08	2008-09	2009-10	2010-11	2011-12	2012-13
K	170 -4.49%	182 +2.25%	209 +17.42%	208 +16.85%	229 +28.65%	178 +0.00%	211 +18.54%	199 +11.80%	208 +16.85%	214 +20.22%	217 +21.91%
1	203 -12.12%	183 -20.78%	177 -23.38%	214 -7.36%	211 -8.66%	231 +0.00%	180 -22.08%	214 -7.36%	202 -12.55%	211 -8.66%	217 -6.06%
2	196 -10.09%	208 -4.59%	188 -13.76%	189 -13.30%	217 -0.46%	218 +0.00%	239 +9.63%	186 -14.68%	221 +1.38%	209 -4.13%	218 +0.00%
3	200 -9.91%	192 -13.51%	214 -3.60%	195 -12.16%	192 -13.51%	222 +0.00%	222 +0.00%	244 +9.91%	190 -14.41%	225 +1.35%	213 -4.05%
4	202 +2.54%	205 +4.06%	203 +3.05%	220 +11.68%	194 -1.52%	197 +0.00%	228 +15.74%	228 +15.74%	250 +26.90%	195 -1.02%	231 +17.26%
5	222 +9.90%	205 +1.49%	215 +6.44%	214 +5.94%	220 +8.91%	202 +0.00%	204 +0.99%	236 +16.83%	236 +16.83%	259 +28.22%	202 +0.00%
6	211 -13.17%	225 -7.41%	226 -7.00%	214 -11.93%	225 -7.41%	243 +0.00%	218 -10.29%	220 -9.47%	255 +4.94%	255 +4.94%	279 +14.81%
7	248 +12.73%	211 -4.09%	234 +6.36%	229 +4.09%	211 -4.09%	220 +0.00%	241 +9.55%	216 -1.82%	218 -0.91%	253 +15.00%	253 +15.00%
8	241 +8.07%	249 +11.66%	201 -9.87%	248 +11.21%	222 -0.45%	223 +0.00%	227 +1.79%	249 +11.66%	223 +0.00%	225 +0.90%	261 +17.04%
9	263 -1.13%	277 +4.14%	293 +10.15%	248 -6.77%	288 +8.27%	266 +0.00%	266 +0.00%	270 +1.50%	297 +11.65%	266 +0.00%	268 +0.75%
10	271 -4.91%	263 -7.72%	272 -4.56%	288 +1.05%	240 -15.79%	285 +0.00%	263 -7.72%	263 -7.72%	266 -6.67%	293 +2.81%	263 -7.72%
11	262 +10.55%	267 +12.66%	251 +5.91%	275 +16.03%	280 +18.14%	237 +0.00%	281 +18.57%	259 +9.28%	259 +9.28%	262 +10.55%	289 +21.94%
12	266 -7.64%	251 -12.85%	258 -10.42%	249 -13.54%	295 +2.43%	288 +0.00%	241 -16.32%	286 -0.69%	263 -8.68%	263 -8.68%	266 -7.64%

K-5	1,193 -4.41%	1,175 -5.85%	1,206 -3.37%	1,240 -0.64%	1,263 +1.20%	1,248 +0.00%	1,284 +2.88%	1,307 +4.73%	1,307 +4.73%	1,313 +5.21%	1,298 +4.01%
6-8	700 +2.04%	685 -0.15%	661 -3.64%	691 +0.73%	658 -4.08%	686 +0.00%	686 +0.00%	685 -0.15%	696 +1.46%	733 +6.85%	793 +15.60%
9-12	1,062 -1.30%	1,058 -1.67%	1,074 -0.19%	1,060 -1.49%	1,103 +2.51%	1,076 +0.00%	1,051 -2.32%	1,078 +0.19%	1,085 +0.84%	1,084 +0.74%	1,086 +0.93%
K-12	2,955 -1.83%	2,918 -3.06%	2,941 -2.29%	2,991 -0.63%	3,024 +0.47%	3,010 +0.00%	3,021 +0.37%	3,070 +1.99%	3,088 +2.59%	3,130 +3.99%	3,177 +5.55%

Tomah Area School District

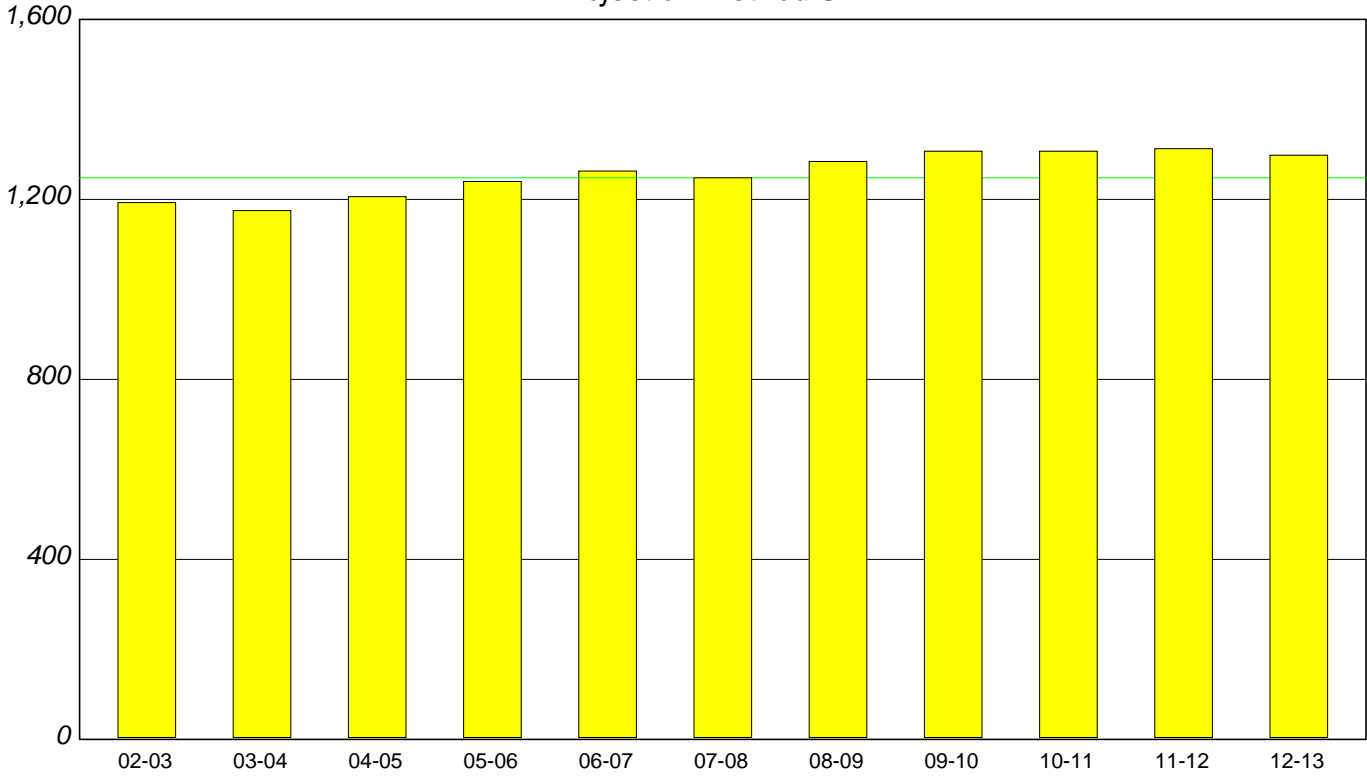
Table 10 - Enrollment Projected Ten Years
Method 3

GRADE	2008-09	2009-10	2010-11	2011-12	2012-13	2013-14	2014-15	2015-16	2016-17	2017-18
K	211	199	208	214	217	0	0	0	0	0
1	180	214	202	211	217	220	0	0	0	0
2	239	186	221	209	218	224	227	0	0	0
3	222	244	190	225	213	222	228	232	0	0
4	228	228	250	195	231	219	228	234	238	0
5	204	236	236	259	202	239	227	236	243	247
6	218	220	255	255	279	218	258	245	255	262
7	241	216	218	253	253	276	216	256	243	253
8	227	249	223	225	261	261	285	223	264	251
9	266	270	297	266	268	311	311	339	266	314
10	263	263	266	293	263	265	307	307	335	263
11	281	259	259	262	289	259	261	302	302	330
12	241	286	263	263	266	294	263	265	307	307

Tomah Area School District

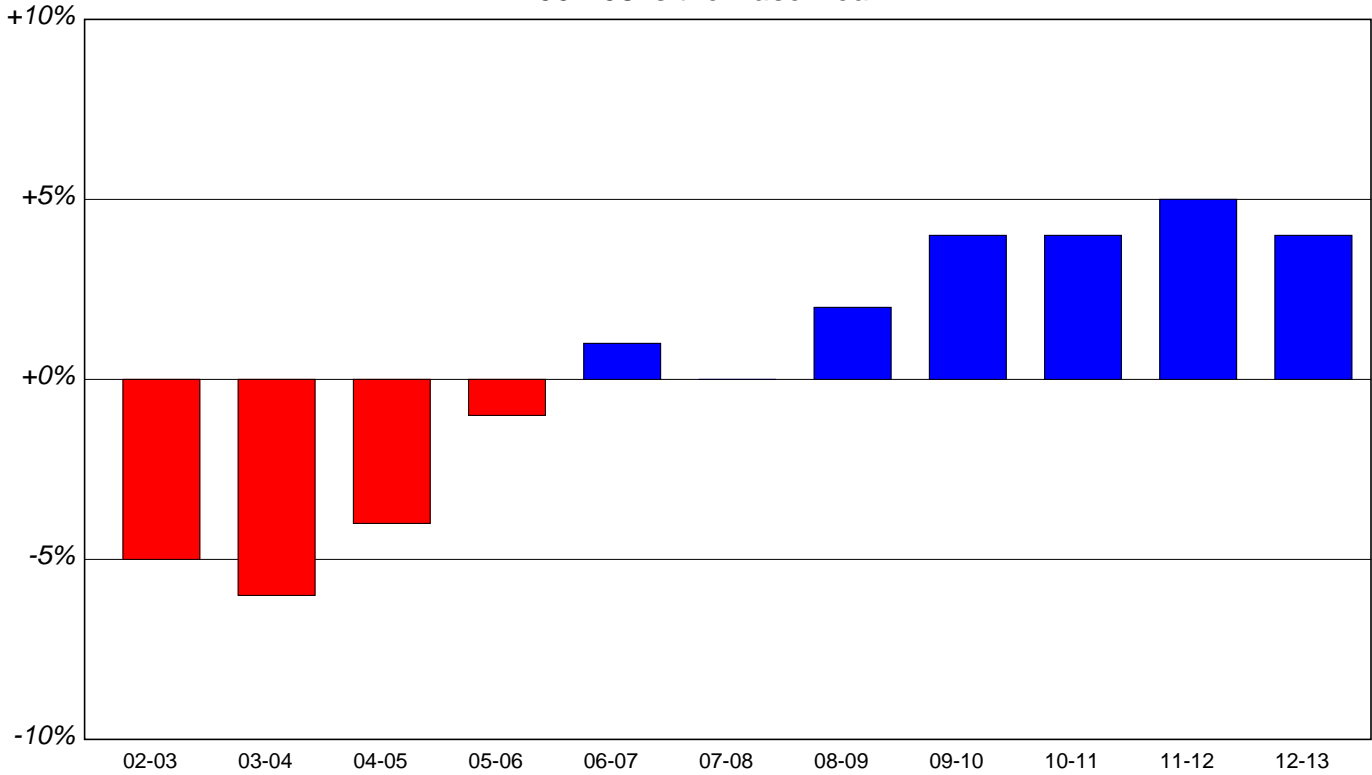
Graph 9-A: K-5 Enrollment 2002-2013

Projection Method 3



Graph 9-B: % Change in K-5 Enrollment

2007-08 is the Base Year



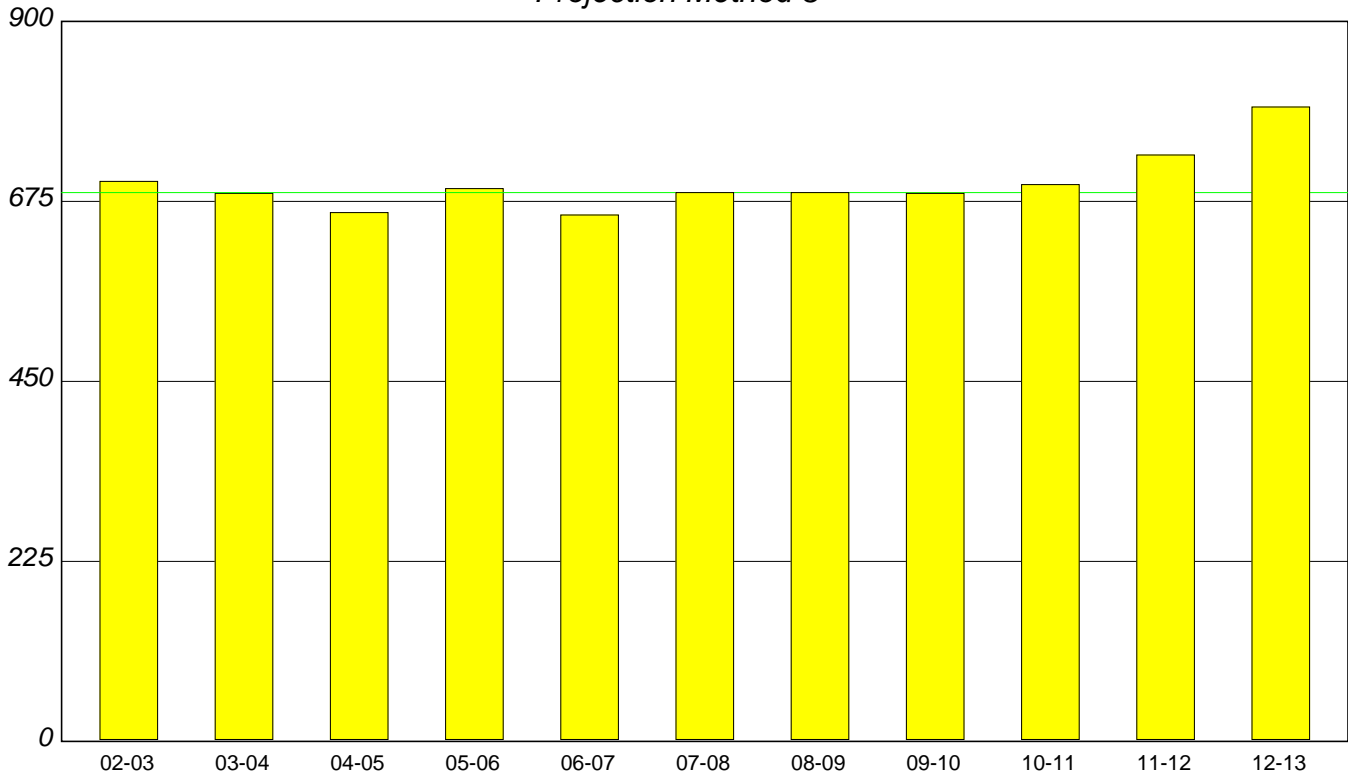
NOTE:

See Table 9 for specific enrollment numbers

Tomah Area School District

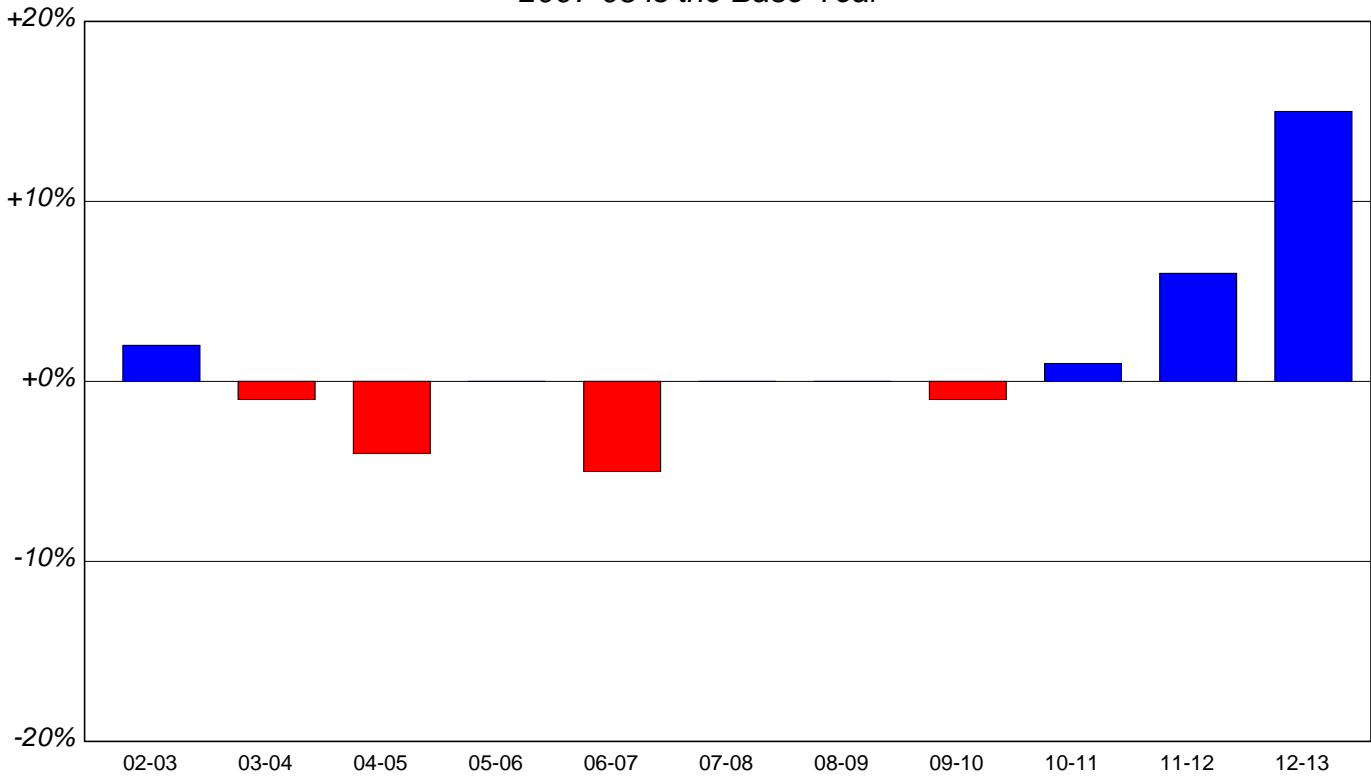
Graph 10-A: 6-8 Enrollment 2002-2013

Projection Method 3



Graph 10-B: % Change in 6-8 Enrollment

2007-08 is the Base Year



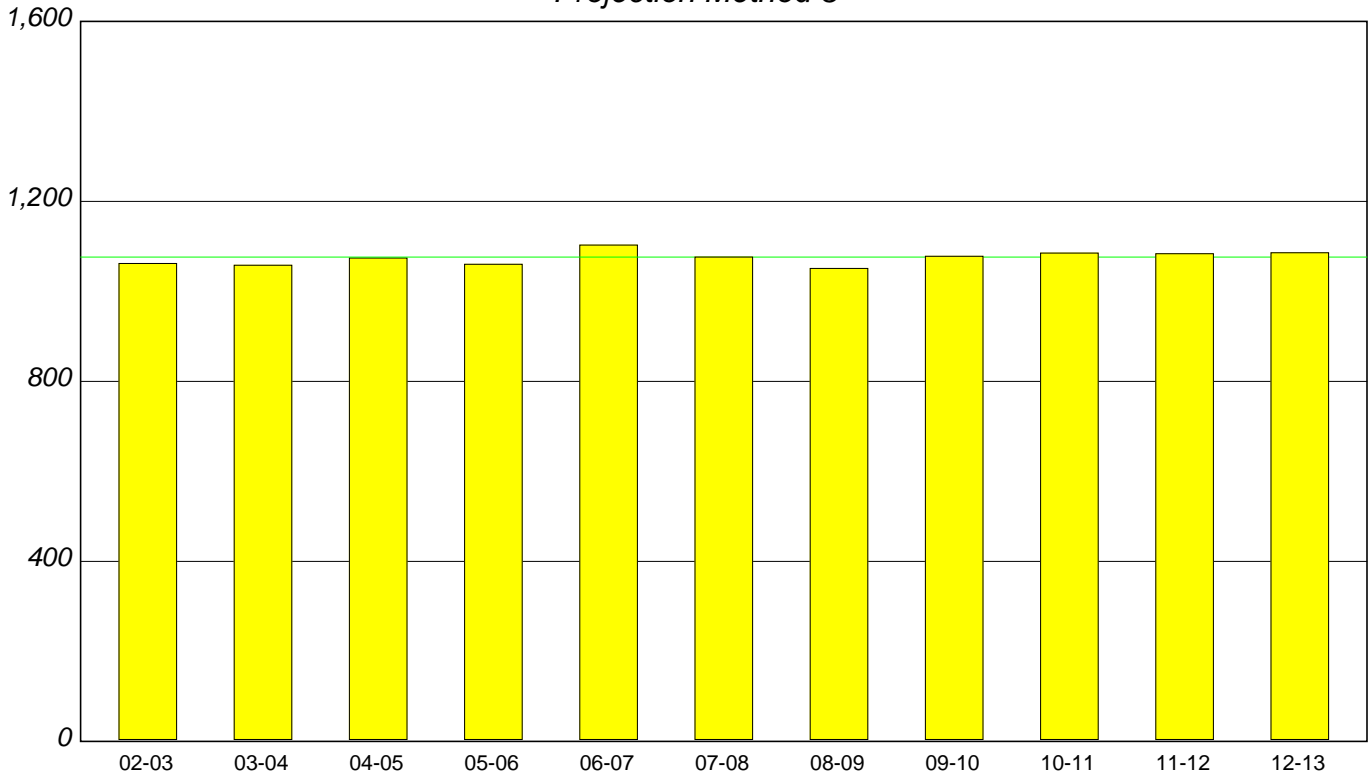
NOTE:

See Table 9 for specific enrollment numbers

Tomah Area School District

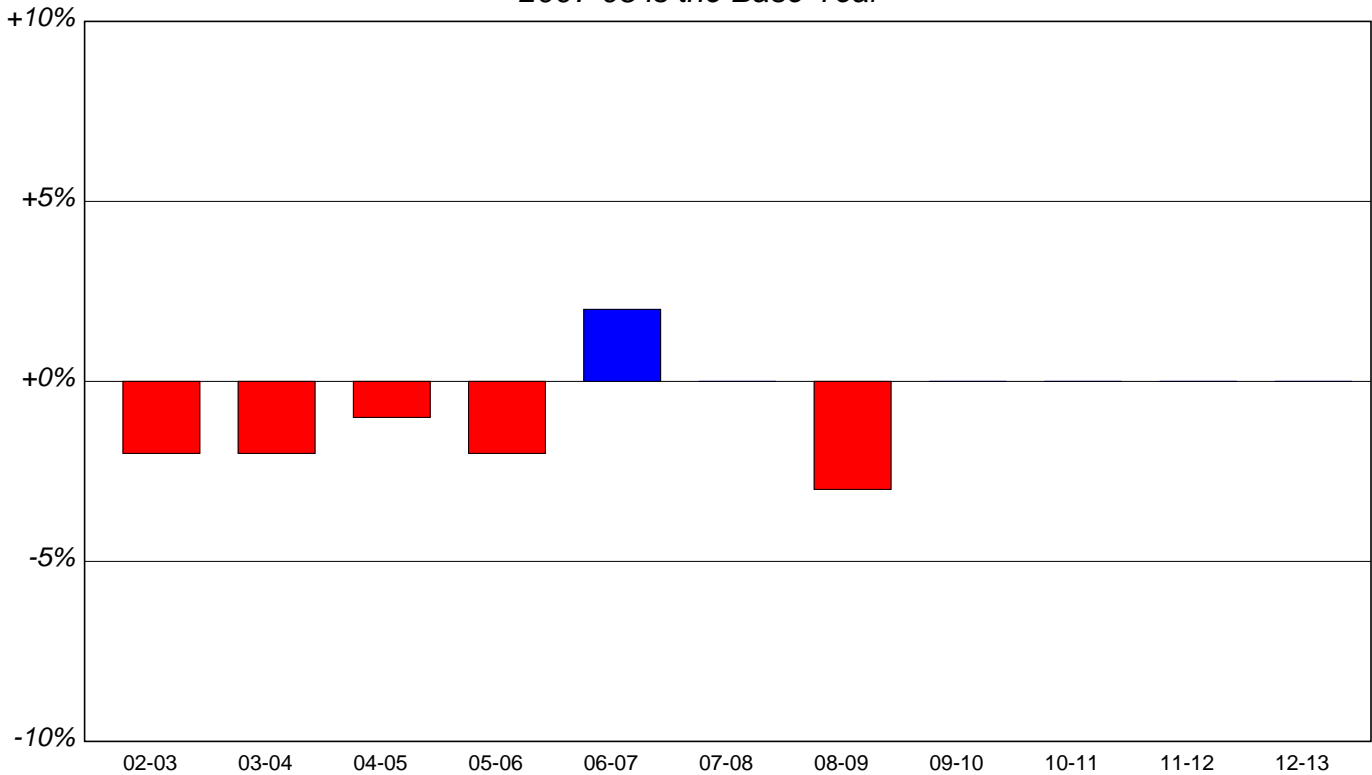
Graph 11-A: 9-12 Enrollment 2002-2013

Projection Method 3



Graph 11-B: % Change in 9-12 Enrollment

2007-08 is the Base Year



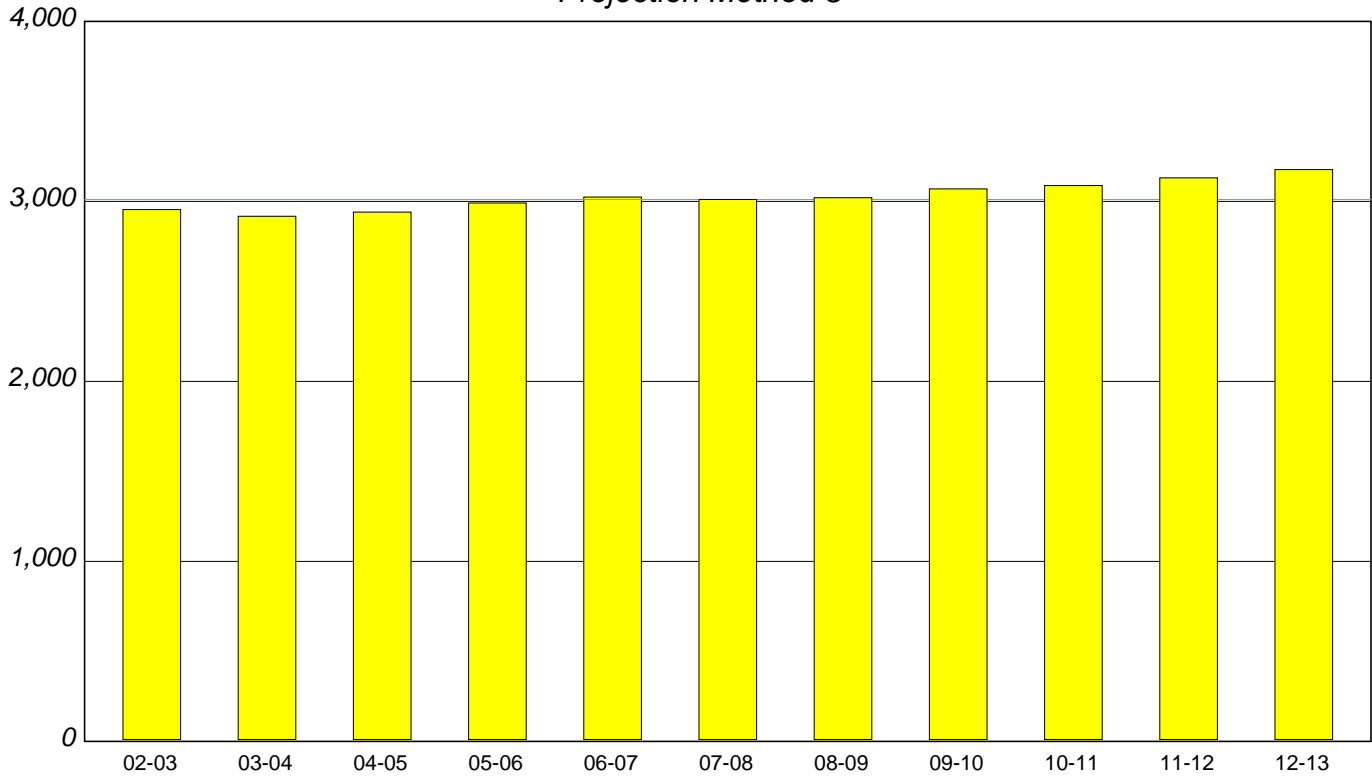
NOTE:

See Table 9 for specific enrollment numbers

Tomah Area School District

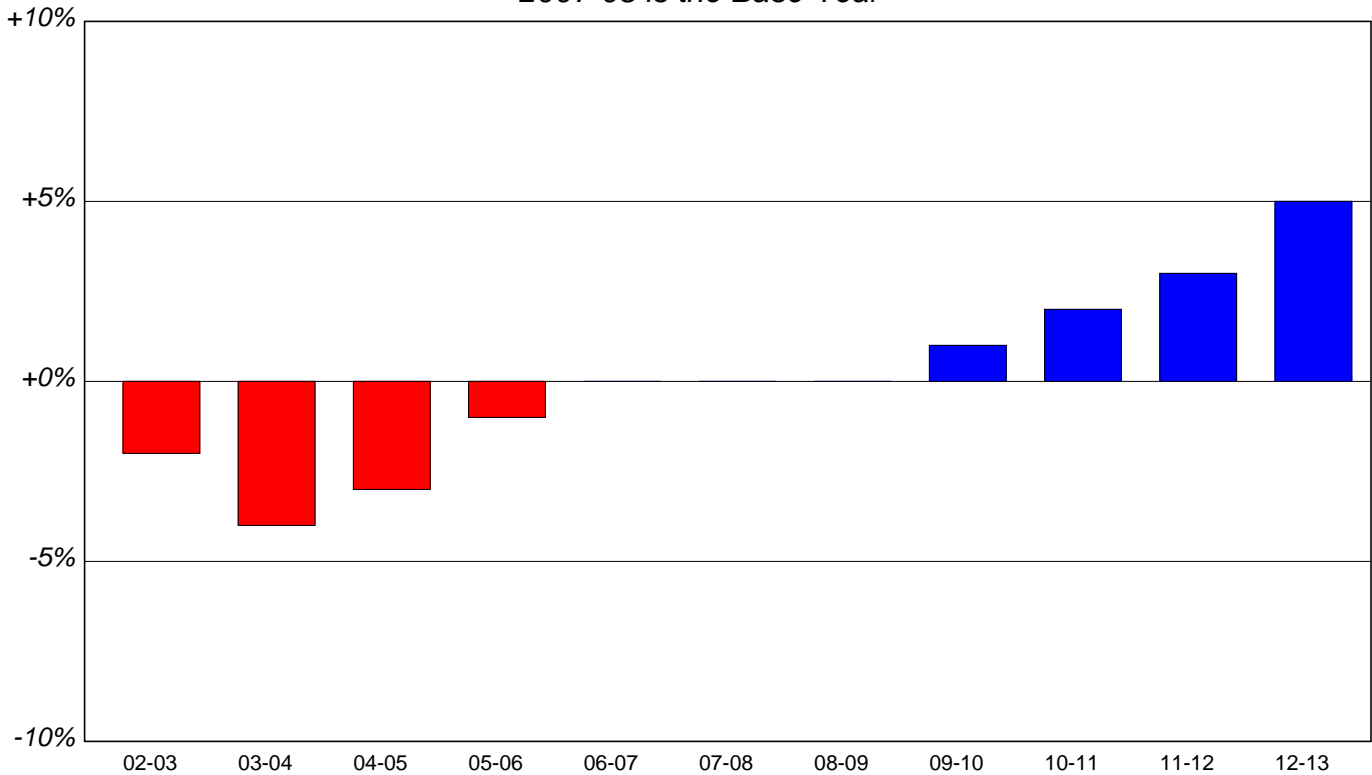
Graph 12-A: K-12 Enrollment 2002-2013

Projection Method 3



Graph 12-B: % Change in K-12 Enrollment

2007-08 is the Base Year

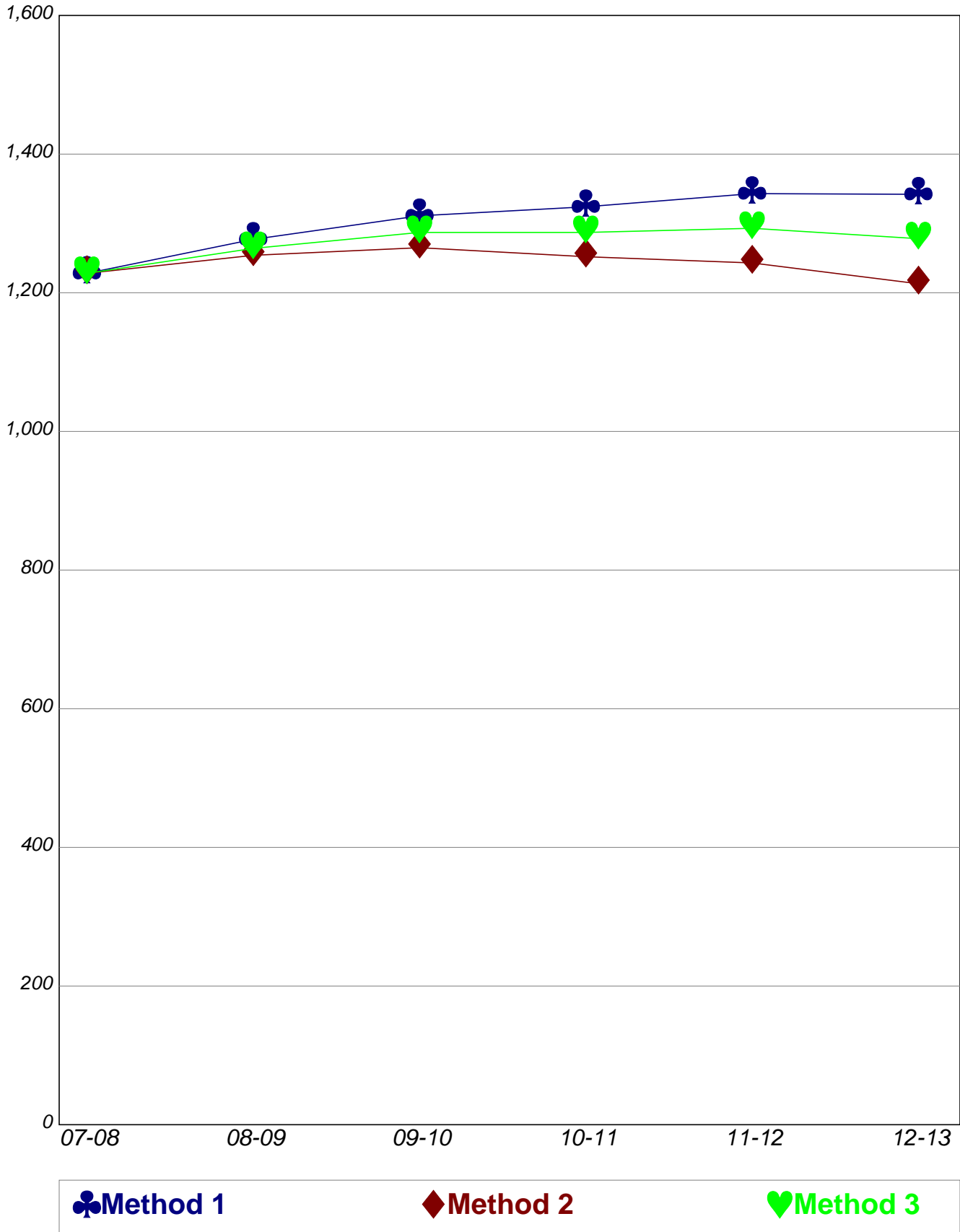


NOTE:

See Table 9 for specific enrollment numbers

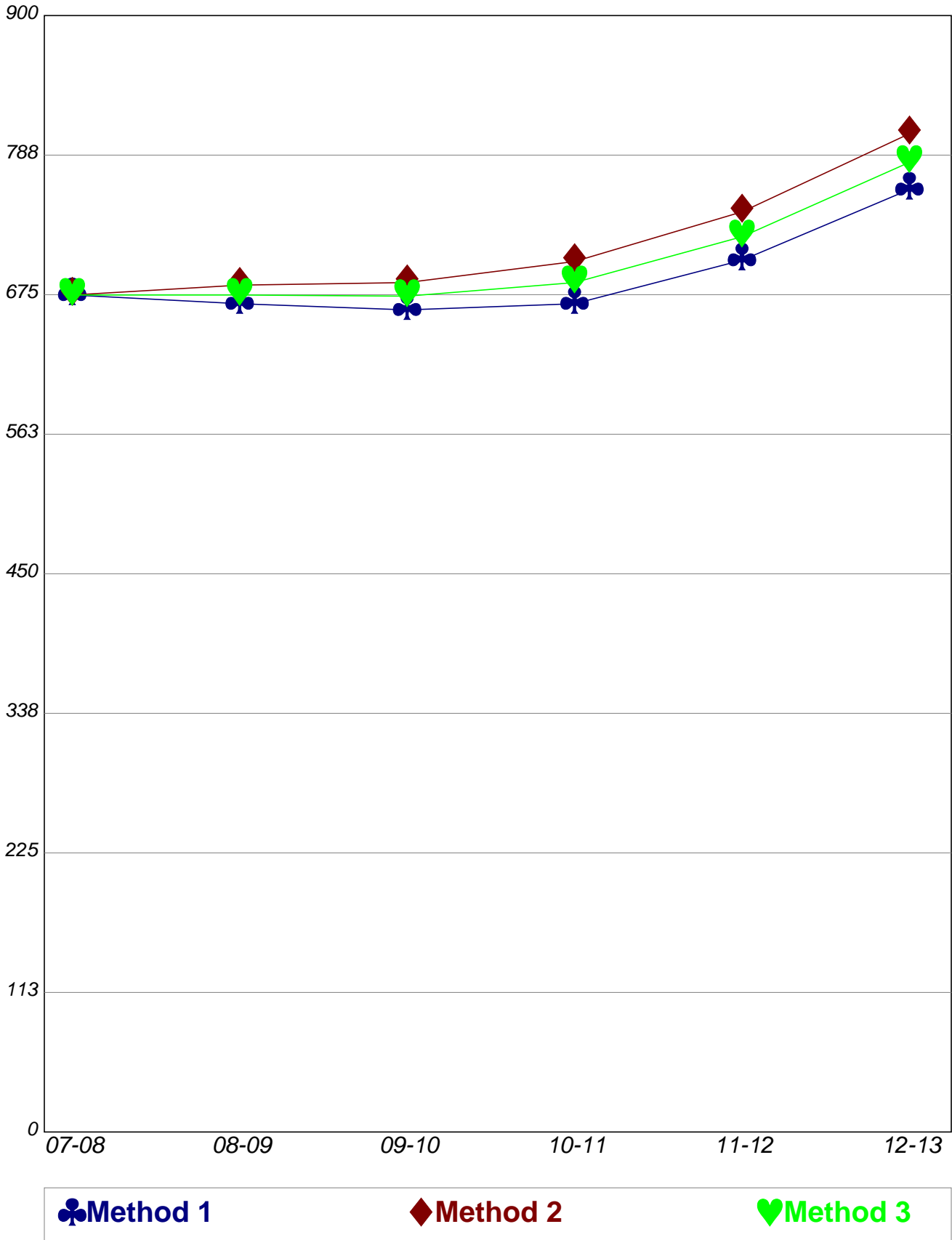
Tomah Area School District

Graph 13
K-5 Enrollment 2007-2012
Comparison between projection methods



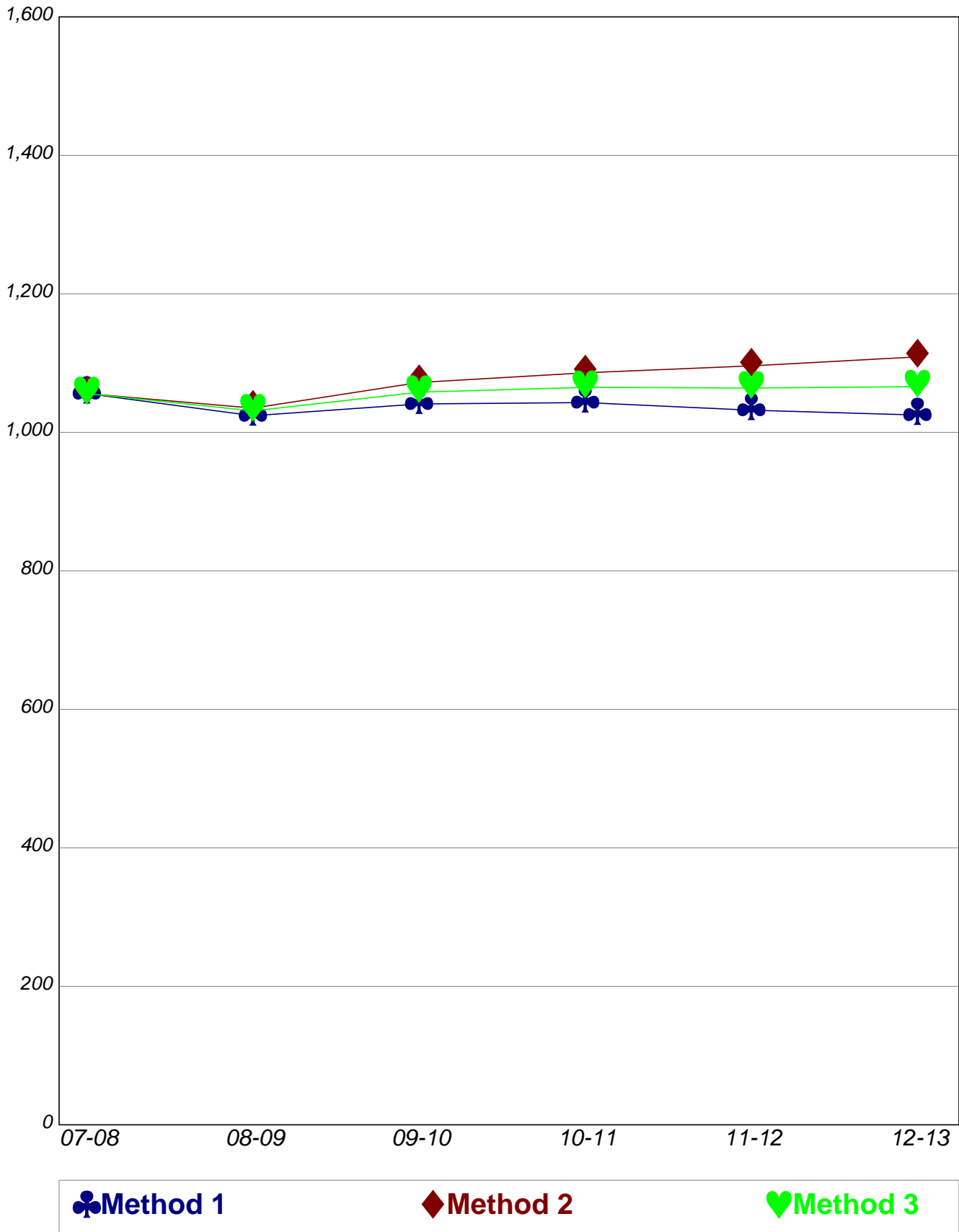
Tomah Area School District

Graph 14
6-8 Enrollment 2007-2012
Comparison between projection methods



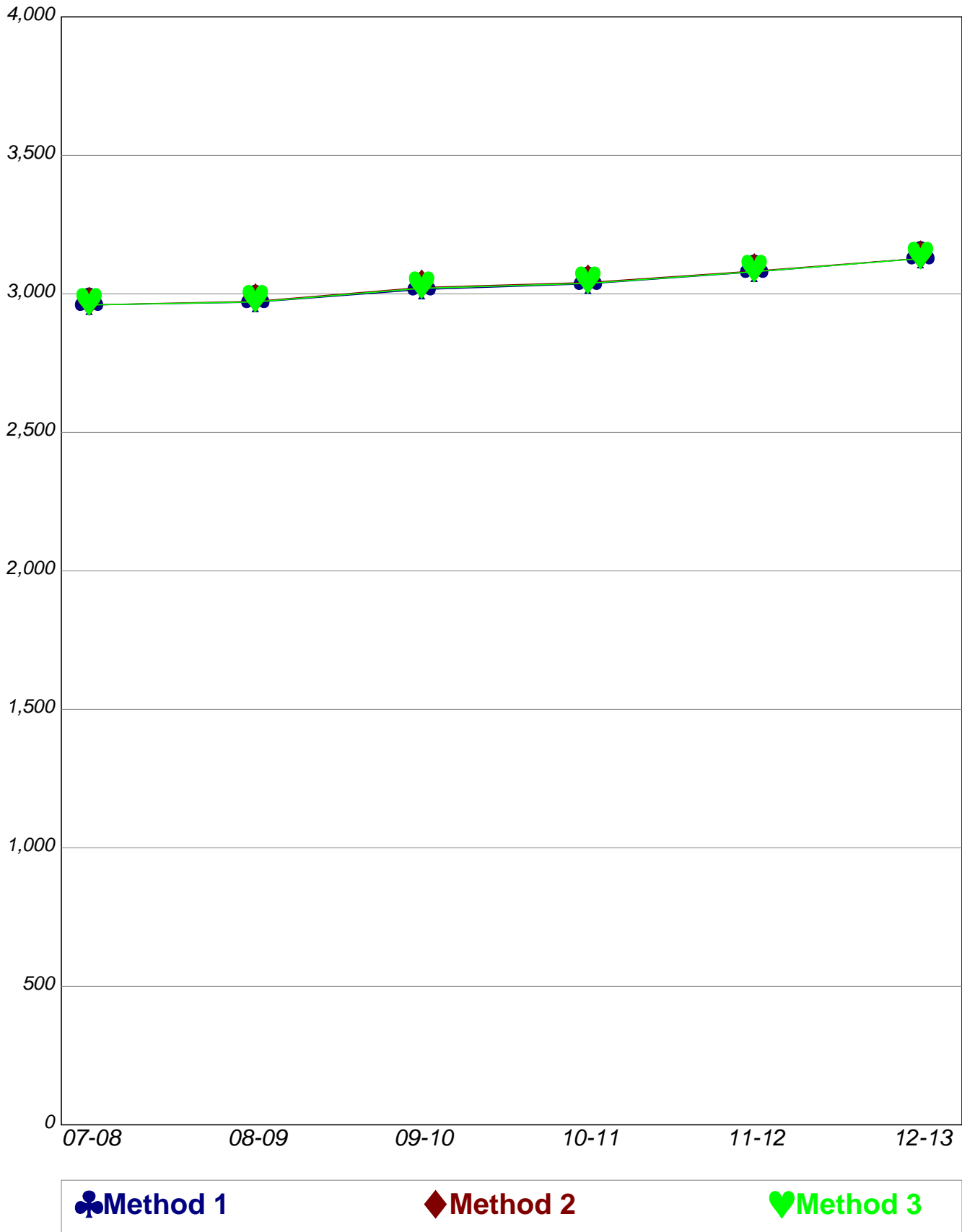
Tomah Area School District

Graph 15
9-12 Enrollment 2007-2012
Comparison between projection methods



Tomah Area School District

Graph 16
K-12 Enrollment 2007-2012
Comparison between projection methods



Tomah Area School District

Table 11 - Teacher Requirements Projected Ten Years
Teacher/Pupil Ratio = 1:22

GRADE	2008-09	2009-10	2010-11	2011-12	2012-13	2013-14	2014-15	2015-16	2016-17	2017-18
K	10.2	9.5	10.0	10.3	10.4	0.0	0.0	0.0	0.0	0.0
1	8.2	10.4	9.7	10.2	10.5	10.6	0.0	0.0	0.0	0.0
2	10.9	8.5	10.7	10.0	10.5	10.8	11.0	0.0	0.0	0.0
3	10.1	11.0	8.6	10.9	10.2	10.7	11.0	11.1	0.0	0.0
4	10.4	10.4	11.3	8.9	11.2	10.5	11.0	11.3	11.4	0.0
5	9.2	10.7	10.7	11.7	9.1	11.5	10.8	11.3	11.6	11.8
6	9.7	9.7	11.3	11.3	12.3	9.6	12.2	11.4	11.9	12.3
7	11.1	9.7	9.8	11.3	11.3	12.4	9.7	12.2	11.5	12.0
8	10.1	11.2	9.8	9.9	11.4	11.4	12.5	9.8	12.3	11.5
9	12.0	12.0	13.2	11.6	11.7	13.5	13.5	14.7	11.6	14.6
10	11.9	11.8	11.8	13.0	11.5	11.5	13.3	13.3	14.5	11.4
11	12.7	11.7	11.6	11.5	12.8	11.2	11.3	13.0	13.0	14.2
12	10.8	12.8	11.7	11.6	11.6	12.8	11.3	11.3	13.1	13.1

Tomah Area School District

Table 12 - Teacher Requirements Projected Ten Years
Teacher/Pupil Ratio = 1:24

GRADE	2008-09	2009-10	2010-11	2011-12	2012-13	2013-14	2014-15	2015-16	2016-17	2017-18
K	9.3	8.8	9.2	9.4	9.5	0.0	0.0	0.0	0.0	0.0
1	7.5	9.5	8.9	9.3	9.6	9.7	0.0	0.0	0.0	0.0
2	10.0	7.8	9.8	9.2	9.6	9.9	10.0	0.0	0.0	0.0
3	9.3	10.1	7.9	10.0	9.4	9.8	10.1	10.2	0.0	0.0
4	9.5	9.5	10.4	8.1	10.3	9.6	10.0	10.3	10.5	0.0
5	8.5	9.8	9.8	10.7	8.4	10.6	9.9	10.4	10.7	10.8
6	8.9	8.9	10.3	10.3	11.3	8.8	11.2	10.5	10.9	11.3
7	10.2	8.9	9.0	10.4	10.4	11.3	8.9	11.2	10.5	11.0
8	9.3	10.3	9.0	9.0	10.5	10.5	11.4	9.0	11.3	10.6
9	11.0	11.0	12.1	10.7	10.7	12.4	12.4	13.5	10.6	13.4
10	10.9	10.8	10.8	11.9	10.5	10.5	12.2	12.2	13.3	10.5
11	11.7	10.7	10.6	10.6	11.7	10.3	10.3	12.0	12.0	13.0
12	9.9	11.7	10.8	10.7	10.6	11.8	10.3	10.4	12.0	12.0

Tomah Area School District

Table 13 - Teacher Requirements Projected Ten Years
Teacher/Pupil Ratio = 1:26

GRADE	2008-09	2009-10	2010-11	2011-12	2012-13	2013-14	2014-15	2015-16	2016-17	2017-18
K	8.6	8.1	8.5	8.7	8.8	0.0	0.0	0.0	0.0	0.0
1	7.0	8.8	8.2	8.6	8.8	9.0	0.0	0.0	0.0	0.0
2	9.2	7.2	9.1	8.5	8.9	9.2	9.3	0.0	0.0	0.0
3	8.5	9.3	7.3	9.2	8.7	9.0	9.3	9.4	0.0	0.0
4	8.8	8.8	9.6	7.5	9.5	8.9	9.3	9.5	9.7	0.0
5	7.8	9.0	9.0	9.9	7.7	9.8	9.2	9.6	9.8	10.0
6	8.2	8.2	9.5	9.5	10.4	8.2	10.3	9.7	10.1	10.4
7	9.4	8.2	8.3	9.6	9.6	10.5	8.2	10.3	9.7	10.1
8	8.5	9.5	8.3	8.3	9.7	9.7	10.5	8.3	10.4	9.8
9	10.2	10.1	11.2	9.8	9.9	11.4	11.4	12.5	9.8	12.3
10	10.1	10.0	10.0	11.0	9.7	9.7	11.2	11.2	12.3	9.7
11	10.8	9.9	9.8	9.8	10.8	9.5	9.5	11.0	11.0	12.0
12	9.2	10.8	9.9	9.8	9.8	10.8	9.5	9.6	11.1	11.1

Tomah Area School District

Table 14 - Teacher Requirements Projected Ten Years
Teacher/Pupil Ratio = 1:28

GRADE	2008-09	2009-10	2010-11	2011-12	2012-13	2013-14	2014-15	2015-16	2016-17	2017-18
K	8.0	7.5	7.9	8.1	8.2	0.0	0.0	0.0	0.0	0.0
1	6.5	8.1	7.6	8.0	8.2	8.3	0.0	0.0	0.0	0.0
2	8.5	6.7	8.4	7.9	8.3	8.5	8.6	0.0	0.0	0.0
3	7.9	8.7	6.8	8.6	8.0	8.4	8.6	8.8	0.0	0.0
4	8.1	8.1	8.9	7.0	8.8	8.3	8.6	8.9	9.0	0.0
5	7.3	8.4	8.4	9.2	7.2	9.1	8.5	8.9	9.1	9.3
6	7.6	7.6	8.9	8.9	9.7	7.6	9.6	9.0	9.4	9.6
7	8.7	7.6	7.7	8.9	8.9	9.7	7.6	9.6	9.0	9.4
8	7.9	8.8	7.7	7.8	9.0	9.0	9.8	7.7	9.7	9.1
9	9.4	9.4	10.4	9.1	9.2	10.6	10.6	11.6	9.1	11.5
10	9.4	9.3	9.3	10.2	9.0	9.0	10.4	10.4	11.4	9.0
11	10.0	9.2	9.1	9.1	10.0	8.8	8.9	10.3	10.3	11.2
12	8.5	10.0	9.2	9.1	9.1	10.1	8.9	8.9	10.3	10.3

Tomah Area School District

Table 15 - Teacher Requirements Projected Ten Years
Teacher/Pupil Ratio = 1:30

GRADE	2008-09	2009-10	2010-11	2011-12	2012-13	2013-14	2014-15	2015-16	2016-17	2017-18
K	7.5	7.0	7.3	7.5	7.6	0.0	0.0	0.0	0.0	0.0
1	6.0	7.6	7.1	7.5	7.7	7.8	0.0	0.0	0.0	0.0
2	8.0	6.2	7.9	7.4	7.7	7.9	8.0	0.0	0.0	0.0
3	7.4	8.1	6.3	8.0	7.5	7.8	8.1	8.2	0.0	0.0
4	7.6	7.6	8.3	6.5	8.2	7.7	8.0	8.3	8.4	0.0
5	6.8	7.8	7.8	8.6	6.7	8.5	7.9	8.3	8.5	8.6
6	7.1	7.1	8.3	8.3	9.0	7.1	8.9	8.4	8.7	9.0
7	8.1	7.1	7.2	8.3	8.3	9.1	7.1	9.0	8.4	8.8
8	7.4	8.2	7.2	7.2	8.4	8.4	9.1	7.2	9.0	8.5
9	8.8	8.8	9.7	8.5	8.6	9.9	9.9	10.8	8.5	10.7
10	8.7	8.7	8.6	9.5	8.4	8.4	9.7	9.7	10.6	8.4
11	9.3	8.6	8.5	8.5	9.4	8.2	8.3	9.6	9.6	10.4
12	7.9	9.4	8.6	8.5	8.5	9.4	8.3	8.3	9.6	9.6

Tomah Area School District

Table 16 - Teacher Requirements Projected Ten Years
Teacher/Pupil Ratio = 1:32

GRADE	2008-09	2009-10	2010-11	2011-12	2012-13	2013-14	2014-15	2015-16	2016-17	2017-18
K	7.0	6.6	6.9	7.1	7.2	0.0	0.0	0.0	0.0	0.0
1	5.7	7.1	6.7	7.0	7.2	7.3	0.0	0.0	0.0	0.0
2	7.5	5.8	7.4	6.9	7.2	7.4	7.5	0.0	0.0	0.0
3	6.9	7.6	5.9	7.5	7.0	7.3	7.6	7.7	0.0	0.0
4	7.1	7.1	7.8	6.1	7.7	7.2	7.5	7.8	7.8	0.0
5	6.3	7.3	7.3	8.0	6.3	7.9	7.4	7.8	8.0	8.1
6	6.7	6.7	7.8	7.8	8.5	6.6	8.4	7.8	8.2	8.4
7	7.6	6.7	6.7	7.8	7.8	8.5	6.7	8.4	7.9	8.2
8	6.9	7.7	6.8	6.8	7.8	7.8	8.6	6.7	8.5	7.9
9	8.3	8.2	9.1	8.0	8.0	9.3	9.3	10.1	8.0	10.0
10	8.2	8.1	8.1	8.9	7.9	7.9	9.1	9.1	10.0	7.8
11	8.8	8.0	8.0	7.9	8.8	7.7	7.8	9.0	9.0	9.8
12	7.4	8.8	8.1	8.0	8.0	8.8	7.8	7.8	9.0	9.0

Tomah Area School District

Table 17 - Accuracy Table

Difference Between Actual and Projected 2007-08 Enrollment

Grade	Current Enrollment	Method 1 Projection	% Diff.	Method 2 Projection	% Diff.	Method 3 Projection	% Diff.
K	178	206	+15.65%	216	+21.28%	211	+18.46%
1	231	234	+1.30%	232	+0.56%	233	+0.93%
2	218	218	+0.03%	214	-1.85%	216	-0.91%
3	222	220	-0.75%	220	-0.70%	220	-0.72%
4	197	197	+0.03%	191	-3.04%	194	-1.51%
5	202	200	-1.13%	194	-3.96%	197	-2.55%
6	243	229	-5.78%	231	-4.81%	230	-5.30%
7	220	227	+3.28%	222	+0.84%	225	+2.06%
8	223	210	-5.71%	205	-8.27%	207	-6.99%
9	266	262	-1.49%	258	-3.08%	260	-2.29%
10	285	283	-0.65%	279	-2.21%	281	-1.43%
11	237	235	-0.69%	233	-1.55%	234	-1.12%
12	288	279	-3.04%	300	+4.29%	290	+0.62%
K-5	1,248	1,275	+2.16%	1,267	+1.52%	1,271	+1.84%
6-8	686	666	-2.92%	658	-4.08%	662	-3.50%
9-12	1,076	1,059	-1.58%	1,070	-0.56%	1,065	-1.02%
K-12	3,010	3,000	-0.33%	2,995	-0.50%	2,998	-0.40%